

Corner to Sections 18, 19, 13 and 24, Twp. 13 S., Rm. 5 and 6 W.

1751

Reestablishment by W. C. Galloway

May 31, 1915

Set  $\frac{3}{4}$ " pipe      Original corner

Maple 12" in diam bears N 70° E

.07 chains (standing)

Yew 24" in diam bears S. 40° W

.27 chains(standing, re)

W..Fir 15" in diam bears N 68° W

.240 chains

Witnesses R. W. Scott and R. A. and F. W. Booth

BENTON COUNTY SURVEYORS OFFICE - CORNER RESTORATION

1755

T 13 S, R 5 W, W. B. & M., BENTON COUNTY, OREGON

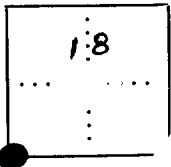
SECTION 18

REPORTED BY Frank A. Tuers (1089)

TITLE Surveyor

DATE November 17, 1977

FOR ADDITIONAL INFORMATION SEE THE T13S R5W FILE IN THE CORNER RESTORATION CORRESPONDENCE FILE DRAWER (CJL 7/19/90).



● OFFICIAL CORNER FOUND

○ CORNER SET

Sec CORNER COMMON TO SEC. 13, 18, 19 & 24  
5/8" X 24" - 10" below ground Iron Rod.

DESCRIBE

ADDITIONAL INFORMATION

The corner of sections 13, 18, 19, & 24  
TP 13S, R 5 and 6 E. determined at  
record bearing and distance from the  
remaining original bearing trees.  
A yew, 27" diam., bears S 40°W., 27  
± lks. dist. with visable scribe marks  
62 or rotted blaze, corner is located  
one side of Gravel Road, bears N10°  
E and S10°W.

OVER

LEGIBLE MARKS ON BEARING OBJECTS

KIND	Fir	Fir	Fir
SIZE	7"	6"	13"
BEARING	N40°E	S67 1/4°W	S54 1/2°
DISTANCE	531/21ks	381/21ks	801/21ks
BT TAG POSTED	+	+	+

T135  
 R6W R5W  
 13 | 18  
 24 | 19

1-96  
 1751  
 1755

CORNER HISTORY		T 13 S, R 5 W		SECTION 18 D.L.C.		CORNER SW CORNER		#
								100400
NO.	DATE	SOURCE	SURVEYOR	MONUMENTS AND ACCESSORIES			COMMENTS	
①	3/10/1853	ORIG. G.L.O.	GEORGE W. HYDE	SET POST @ 4 B.T.'S				1
								2
②	5/31/1915	CS # 521	W. C. GALLOWAY	ORIG. COR + 2 B.T.'S SET. 3/4" PIPE @ 1 B.T.			FB 20/8	③
								4
③	"	OLD COR. REST. BK. #1 PG. 96	" "	" " " " " " " " " "				5
								6
④	"	REST. 1751	" "	" " " " " " " " " "			TRANS. COPY OF ③ + MAY CONTAIN ERRORS + OMISSIONS	⑦
								8
⑤	6/1915	MAP NO. 13-5-00015	" "	3/4" PIPE + 3 B.T.'S, 2 STD.				9
								10
⑥	1/5/1925	CS # 933	WALTER W. LARSEN	NO MON. DESC.			FB 32/64	⑪
								12
⑦	11/17/1927	COR. REST. CORRES. FILE	FRANK TUERS	FWD. YEW SET 5/8"x24" REBAR MKD. + FIR TIED FHL COR.				13
								14
⑧	"	REST. 1755	" "	FWD. 5/8"x24" I. ROD + YEW, + FIR B.T.'S			TRANS. COPY OF ⑦ + CON- TAINS ERRORS + OMISSIONS	⑮
								16
⑨	2/12/1992	CS # 8589	TEO LANGTON	" " ROD + 6 B.T.'S				17
								18
								19
								20
								21
								22
								23
								24
								25
								26
								27
								28
								29
								30
								31



# United States Department of the Interior

IN REPLY REFER TO

BUREAU OF LAND MANAGEMENT  
District Office  
3550 Liberty Road S.  
P. O. Box 3227  
Salem, Oregon 97302

DEC 9 1977

Benton County Surveyor  
Benton County Courthouse  
360 SW Avery  
Corvallis, OR 97330

Dear County Surveyor:

Enclosed are the notes for remonumentation of the sec. cor. 13, 18, 19, and 24, T.13S., Rs.5 & 6W., and the rehabilitation of the S.E. cor. of William Quivery, No. 54, T.13S., R.6W., Willamette Meridian, Oregon.

Sincerely yours,

Frank A. Tuers



*Save Energy and You Serve America!*

Benton County

November 17, 1977

See Cor. Plat. No. 1777  
11/17/77

REMONUMENTATION OF AN ORIGINAL CORNER

T.13S.,Rs.5 and 6W., Willamette Meridian, Oregon

The cor. of secs. 13, 18, 19, and 24, Tp.13S., Rs.5 and 6E.,  
Determined at record bearing and distance from the remaining  
original bearing trees:

A yew, 27 ins. diam., bears S.40° W.,  
27 lks. dist., with visible scribe  
marks 6 2 or rotted blaze.

At the corner point

Set an iron rebar, 24 ins. long, 5/8 inc. diam., 10 ins. below the ground.

from which new bearing trees

A fir, 7 ins. diam., bears N.40°E.,  
53½ lks. dist., mkd T13S R5W S18 BT.

A fir, 6 ins. diam., bears S.67¼°E.,  
38½ lks. dist., mkd. T13S R5W S19 BT.

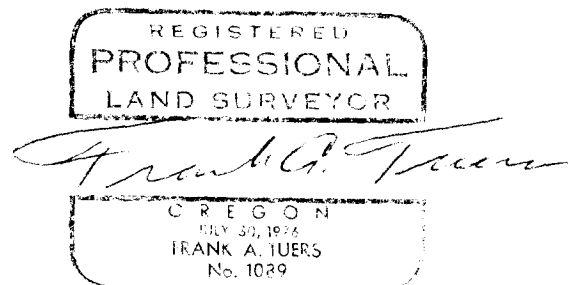
A fir, 13 ins. diam., bears S.54¼°W.,  
80½ lks. dist., mkd. T13S R6W S24 BT.

A fir, 18 ins. diam., bears N.73½°W.,  
39½ lks. dist., mkd. T13S R6W S13 BT.

From this point, a fence corner bears S.78°E.; 71 lks., with fences  
extending N., E., and S.

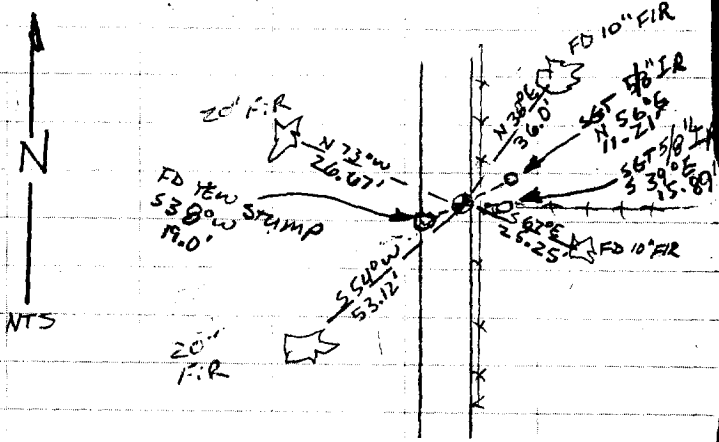
Corner is located on E. side of gravel road, bears N.10°E. and S.10°W.

Witnessed by Jerry J. McNutt.



T1B3	R5W
R6W	18
13	
24	19

8-31-94  
 G CLARK  
 J WHEELER



T1B3  
 R6W R5W  
 S13 | S18  
 S24 | S19  
 LS 1102  
 1994

35100400.DWG

DATE 02/02/2000TOWNSHIP 13 SOUTH, RANGE 05 WEST, WILLAMETTE MERIDIAN; SECTION 18 CORNER SOUTHWEST  
DONATION LAND CLAIM N/A CORNER \_\_\_\_\_**COMMON CORNER(S):**

THE NORTHWEST CORNER OF SECTION 19.  
THE SOUTHEAST CORNER OF SECTION 13 IN TOWNSHIP 13 SOUTH, RANGE 6 WEST.  
THE NORTHEAST CORNER OF SECTION 24 IN TOWNSHIP 13 SOUTH, RANGE 6 WEST.

**RECORDS (INFORMATION IN *BOLD ITALICS* IS COUNTY STAFFS' INTERPRETATION OF THE RECORD)**

- [01] ORIGINAL GLO SURVEY BY GEORGE W. HYDE, D.S., APPROVED MARCH 18, 1853. *SET POST WITH 4 BEARING TREES, MEASURED TO THE FACE.*
- [02] COUNTY SURVEY NO. 521 NOTES (FIELD BOOK NO. 20, PAGE 8) BY W. C. GALLOWAY, C.S., DATED MAY 31, 1915. *FOUND ORIGINAL POST AND 2 BEARING TREES, SET A 3/4" PIPE WITH 1 NEW BEARING TREE.*
- [03] OLD CORNER RESTORATION BOOK NO. 1, PAGE 96, BY W. C. GALLOWAY, DATED MAY 31, 1915. *SAME INFORMATION AS RECORD [02].*
- [04] CORNER RESTORATION NO. 1751. *THIS IS A TRANSCRIBED COPY OF RECORD [03] AND MAY CONTAIN ERRORS AND OMISSIONS.*
- [05] MAP NO. 13-5-00015 BY W. C. GALLOWAY, DATED JUNE, 1915. *3/4" PIPE WITH 3 BEARING TREES.*
- [06] COUNTY SURVEY NO. 933 NOTES (FIELD BOOK NO. 34, PAGE 64) BY WALTER W. LARSEN, D.C.S., DATED JANUARY 5, 1925. *NO DESCRIPTION.*
- [07] BLM LETTER BY FRANK TUERS, DATED NOVEMBER 17, 1977. *FOUND 1 BEARING TREE, SET 5/8" IRON REBAR WITH 4 NEW BEARING TREES.*
- [08] CORNER RESTORATION NO. 1755. *THIS IS A TRANSCRIBED COPY OF RECORD [07] AND MAY CONTAIN ERRORS AND OMISSIONS.*
- [09] COUNTY SURVEY NO. 8589 BY TED LANGTON, P.L.S., DATED FEBRUARY 12, 1992. *FOUND 5/8" ROD AND 6 BEARING TREES.*
- [10] COUNTY SURVEY NO. 8848 BY NORM SPRINGER, P.L.S., DATED JUNE 16, 1994. *FOUND 5/8" IRON ROD.*
- [11] CORNER RESTORATION NO. 135100400R3, BY NORM SPRINGER, P.L.S., DATED NOVEMBER 7, 1994. *FOUND 5/8" REBAR AND 5 ACCESSORIES, SET BRASS DISC WITH 2 NEW ACCESSORIES.*
- [12] BENTON COUNTY GIS/DEA MAPPING PROJECT, BY RAY WILSON, D.C.S., DATED JULY, 1997. *FOUND BRASS DISC, ESTABLISHED STATE PLANE COORDINATES FROM RTK/GPS CONTROL.*

**COMMENTS/LOCATION/ETC:****NOTES:**

THIS IS A MICROSOFT WORD 97 DOCUMENT NAMED "35100400" CREATED FROM A BOILER PLATE DOCUMENT NAMED "HISTORY", WHICH HAS A STYLESHEET NAMED "CORNER" ATTACHED TO IT.

**FIRM/AGENCY:** BENTON COUNTY SURVEYOR'S OFFICE  
**ADDRESS:** 360 S.W. AVERY AVE. CORVALLIS OR 97333; PH. 766-6821  
**RESEARCH BY:** CURTIS J. LIESENFELT, P.L.S.  
**DATA ENTRY BY:** SAME

**BENTON COUNTY CORNER RESTORATION FORM, PAGE 1 OF 1, 135100400R3**

**SEE CORNER HISTORY FORM FOR RECORDS ETC.**

CORNER RESTORATION FIELD BOOK NUMBER      PAGE(S)      DATE 11/07/1994  
 TOWNSHIP 13 SOUTH, RANGE 5 WEST, WILLAMETTE MERIDIAN; SECTION 18 CORNER SW  
 DONATION LAND CLAIM      CORNER       
 CONDITION REPORT     ; REFERENCED OUT     ; RENEWED XX; SURVEYED IN     

**LOCATION AND COMMENTS:**

THE CORNER IS LOCATED ON THE EAST SIDE OF A 10 FOOT WIDE GRAVEL LOGGING ROAD, ONE FOOT WEST OF THE CUT BANK AT THE SHOULDER OF THE ROAD. THE CORNER IS LOCATED IN A FORESTED AREA ON A WEST SLOPE. ACCESS IS FROM THE NORTHEAST THROUGH THOMPSON'S GATE OFF BELLFOUNTAIN ROAD. IT IS POOR FOR PREMARKING AND G.P.S. CONTROL.

**MONUMENTS AND ACCESSORIES FOUND (CONDITION AND SOURCE):**

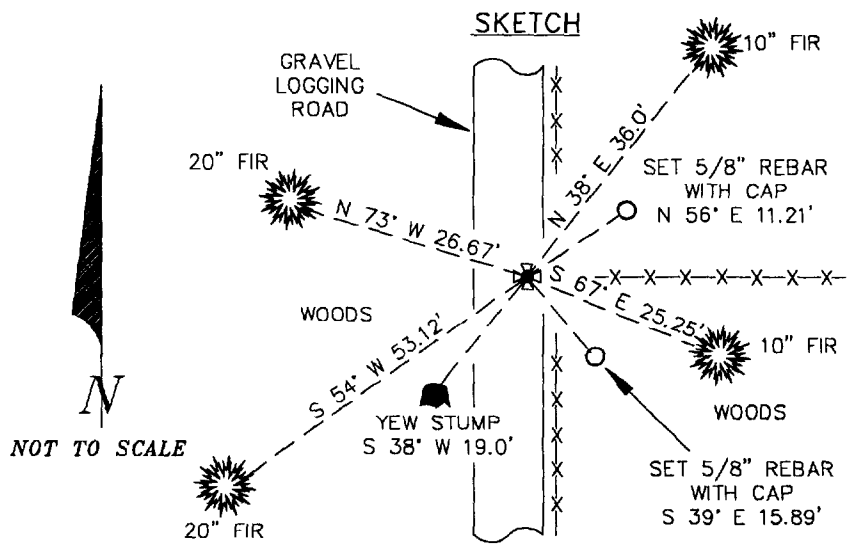
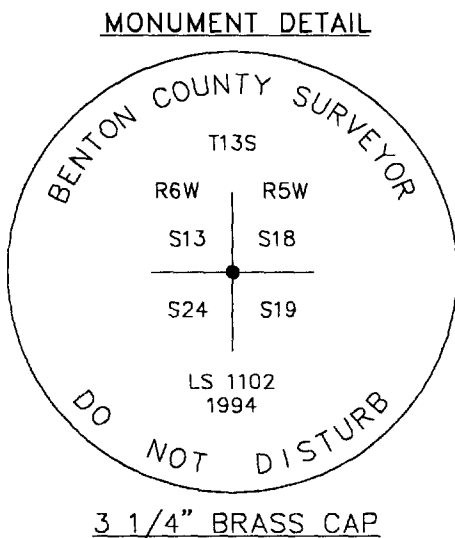
- FOUND: 5/8" REBAR 1.2 FEET BELOW THE SURFACE FOR THE CORNER(5/8" IRON REBAR, 10" BELOW SURFACE AS PER RECORD [07]).
- FOUND: 20" PARTLY ROTTED YEW STUMP S 38° W 19 FEET (24" YEW, S 40° W 17.82 FEET FACE MEASUREMENT AS PER RECORD [01]).
- FOUND: DOWN FENCES EXTENDING NORTH, SOUTH, AND EAST (AS PER RECORD [07]).
- FOUND: LIVE 10" DOUGLAS FIR WITH SCAR VISIBLE, BEARS N 38° E 36.0 FEET (7" FIR, N 40° E 35.31 FEET AS PER RECORD [07]). SET 6" SPIKE AND BRASS WASHER IN THE WESTERLY BASE.
- FOUND: LIVE 10" DOUGLAS FIR WITH SCAR VISIBLE, BEARS S 67° E 25.25 FEET (6" FIR, S 67° 1/4" E 25.41 FEET AS PER RECORD [07]). SET A 6" SPIKE AND BRASS WASHER IN THE NORTHERLY BASE.
- FOUND: LIVE 20" DOUGLAS FIR WITH SCAR VISIBLE, BEARS N 73° W 26.67 FEET (18" FIR, N 73 1/2° W 26.07 FEET AS PER RECORD [07]). SET A 6"SPIKE AND BRASS WASHER IN THE SOUTHERLY BASE.
- FOUND: LIVE 20" DOUGLAS FIR WITH SCAR VISIBLE, BEARS S 54° W 53.12 FEET (13" FIR, S 54 1/4° W 53.13 FEET AS PER RECORD [07]). SET A 6" SPIKE AND BRASS WASHER IN THE SOUTHEASTERLY BASE.

**MONUMENT SET (PROCEDURES AND DESCRIPTION):**

SET: 2" INSIDE DIAMETER X 36" LONG IRON PIPE WITH A 3 1/4" BENTON COUNTY BRASS CAP, STAMPED AS SHOWN, OVER THE RECOVERED 5/8" IRON ROD 8" BELOW GROUND SURFACE.

**NEW ACCESSORIES:**

- SET: REBAR (SEE NOTES), 8" BELOW GROUND SURFACE, BEARS S 39° E 15.89 FEET.
- SET: REBAR (SEE NOTES), 8" BELOW GROUND SURFACE, BEARS N 56° E 11.21 FEET.
  
- SET: ORANGE FIBERGLASS "SURVEY MARKER" POST 2.2 FEET EASTERLY.



**NOTES:**

COMPASS DECLINATION IS 20° EAST. ALL MEASURED DISTANCES AND COMPASS BEARINGS ARE TO THE CENTER OF THE OBJECT, UNLESS OTHERWISE NOTED. ALL BEARING TREES ARE PAINTED AND HAVE A B.T. TAG ATTACHED, FACING THE CORNER UNLESS OTHERWISE NOTED. ALL BEARING TREES HAVE A BRASS WASHER (STAMPED "BENTON COUNTY SURVEYOR") ATTACHED TO A SIDE CENTER UNLESS OTHERWISE NOTED. ALL LIVE BEARING TREES HAVE A PLASTIC WASHER (STAMPED "BENTON COUNTY SURVEYOR CORNER RESTORATION") ATTACHED TO THE BACK OF THE TREE OPPOSITE THE CORNER UNLESS OTHERWISE NOTED. ALL SET REBAR ARE 5/8" X 30" AND HAVE A YELLOW PLASTIC CAP (STAMPED "SPRINGER LS 1102") ATTACHED TO THE TOP. THIS DOCUMENT WAS NAMED AND CREATED IN A MANNER SIMILAR TO THE HISTORY FORM. THE NAME OF THE BOILER PLATE IS "MONUMENT". THE BORDER, STAMP AND SKETCH ARE FROM AUTOCAD RELEASE 12.

THIS RESTORATION WAS PERFORMED AT THE DIRECTION AND APPROVAL OF THE BENTON COUNTY/DEPUTY COUNTY SURVEYOR.     

**FIRM/AGENCY:** SPRINGER SURVEYING  
**ADDRESS:** 37056 MOSS ROCK ROAD, CORVALLIS OR 97330  
**SURVEYOR:** NORMAN D. SPRINGER  
**SURVEY CREW:** GERRY CLARK AND JEFF WHEELER

REGISTERED  
 PROFESSIONAL  
 LAND SURVEYOR

*Norman D. Springer*

OREGON  
 JULY 22, 1977  
 NORMAN D. SPRINGER  
 1102

EXPIRES 6/30/96