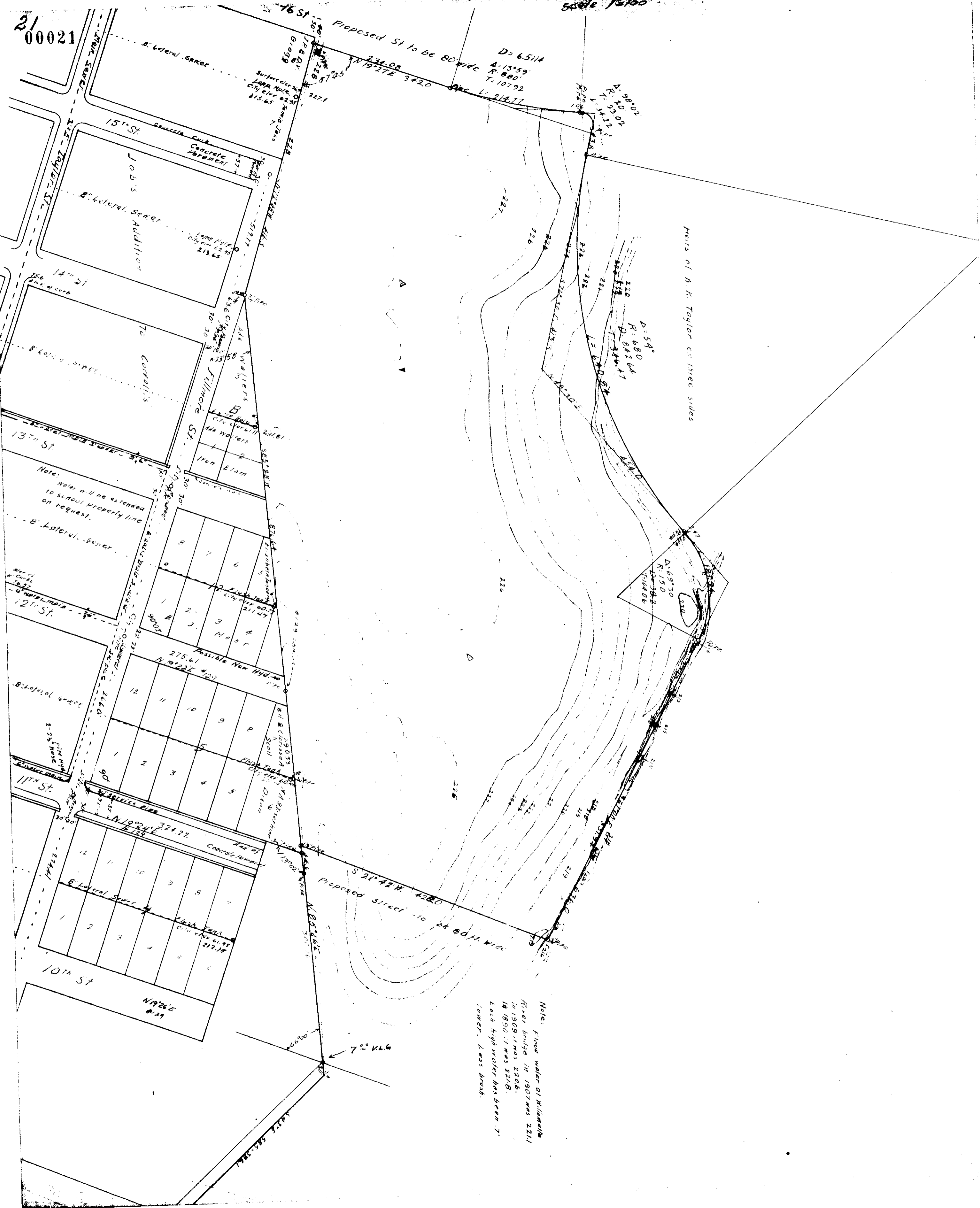


Scale 1/4" = 100'

2100021



15th St
 Concrete Pavement
 Job's Addition
 8' lateral sewer
 Long Note
 City Enr 6295
 213.65

14th St
 8' lateral sewer
 70 Corollis
 13th St
 Note: water will be extended to school property line on request.
 8' lateral sewer
 12th St
 8' lateral sewer
 11th St
 8' lateral sewer

| | | |
|---|---|---|
| 8 | 7 | 6 |
| 1 | 2 | 3 |
| 4 | 5 | 6 |

Assible Non Hydro
 275.61
 N 82°25' W 120'

| | | | | |
|----|----|----|---|---|
| 12 | 11 | 10 | 9 | 8 |
| 1 | 2 | 3 | 4 | 5 |

7° V.L.G.

| | | | | |
|----|----|----|---|---|
| 12 | 11 | 10 | 9 | 8 |
| 1 | 2 | 3 | 4 | 5 |

10th St
 N 82°25' W 120'

Proposed St to be 80' wide
 D = 6.5114
 A = 13°59'
 R = 800'
 T = 107.92
 L = 214.77

D = 54'
 R = 680'
 T = 344.41

D = 697.30
 R = 1510'
 T = 378.82
 L = 704.06

Proposed street to be 80 ft wide
 S 21°42' W 428.0

Note: Flood water of Williams River bridge in 1907 was 2211 in 1909 it was 2206. In 1890 it was 2218. Each high water has been 7' lower. Less brush.

Heirs of N. K. Taylor on three sides