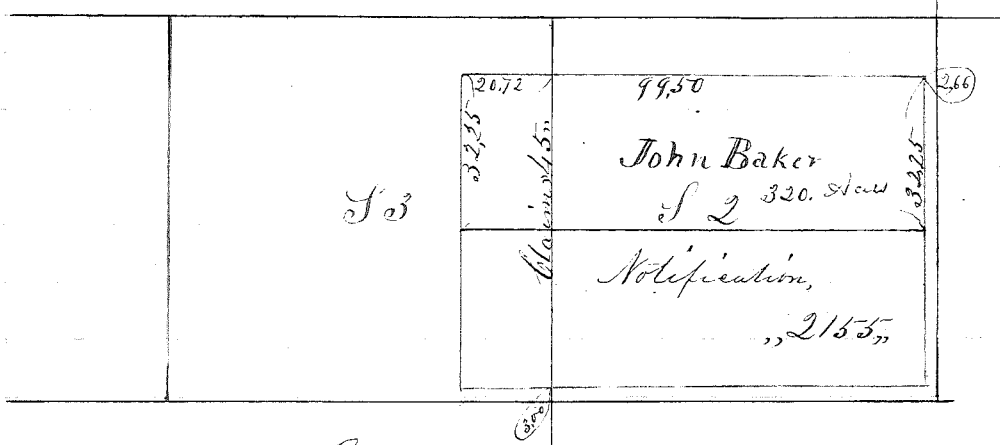


Tp 13 S R 5 W



Survey No 10
10

Jesse Gage to John Baker

Beginning at the NE corner of Claim 45.
Tp 13, S, R. 5, W

West On the N boundary of Claim 45 Tp 13 S 5 W

99.50 ch To the NW corner of " " " " " "

South On the West boundary of " " " " " "

32.25 ch To a post & ground

East

99.50 ch To a post on the East boundary of Claim 45

North

32.25 ch To place of beginning containing 320 Acres

Sept. 9th 1855

Attest L A Davis

County Surveyor