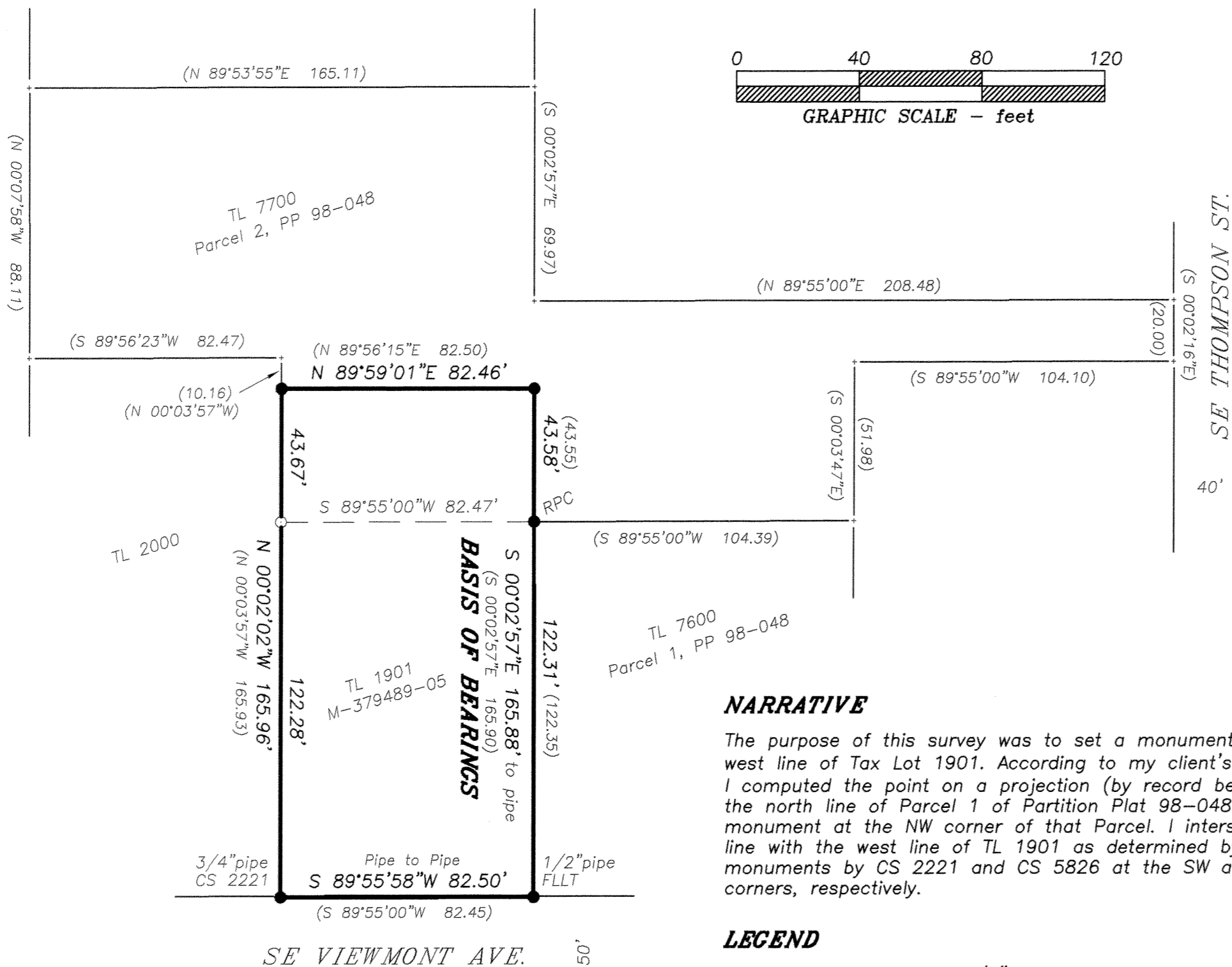


RECORD OF SURVEY  
for  
**WILLIAM GARY WOLFE**  
**KATY BENNETT-WOLFE**  
and **MARK BENNETT**

on  
TRACT 14, F.L. LILLY TRACTS  
in  
NORTH HALF of SECTION 11  
T 12 S, R 5 W, W.M.  
CITY OF CORVALLIS  
BENTON COUNTY, OREGON

MARCH 1, 2005



**NARRATIVE**

The purpose of this survey was to set a monument on the west line of Tax Lot 1901. According to my client's instructions I computed the point on a projection (by record bearing) of the north line of Parcel 1 of Partition Plat 98-048 from my monument at the NW corner of that Parcel. I intersected that line with the west line of TL 1901 as determined by the monuments by CS 2221 and CS 5826 at the SW and NW corners, respectively.

**LEGEND**

- .....Found monument: 5/8" iron rod per CS 5826 unless otherwise noted.
- RPC...Red Plastic Cap on 5/8"n iron rod set per Partition Plat 98-048.
- FLLT..Plat of F.L. LILLY TRACTS.
- .....Set monument: 5/8"x 30" rebar with red plastic cap stamped "NORTHSTAR PLS 1823."
- ( )....Record data from Partition Plat 98-048.

NOTE: pipe dimension is inside diameter.

REGISTERED  
**PROFESSIONAL  
LAND SURVEYOR**

*Theodore James Langton*

OREGON  
JULY 13, 1979  
THEODORE JAMES LANGTON  
1823

Renewal Date 12/31/2006

**NORTHSTAR SURVEYING, INC.**

720 N.W. 4th Street  
Corvallis, Oregon 97330  
Phone: 541-757-9050

BENTON COUNTY  
SURVEYOR'S OFFICE

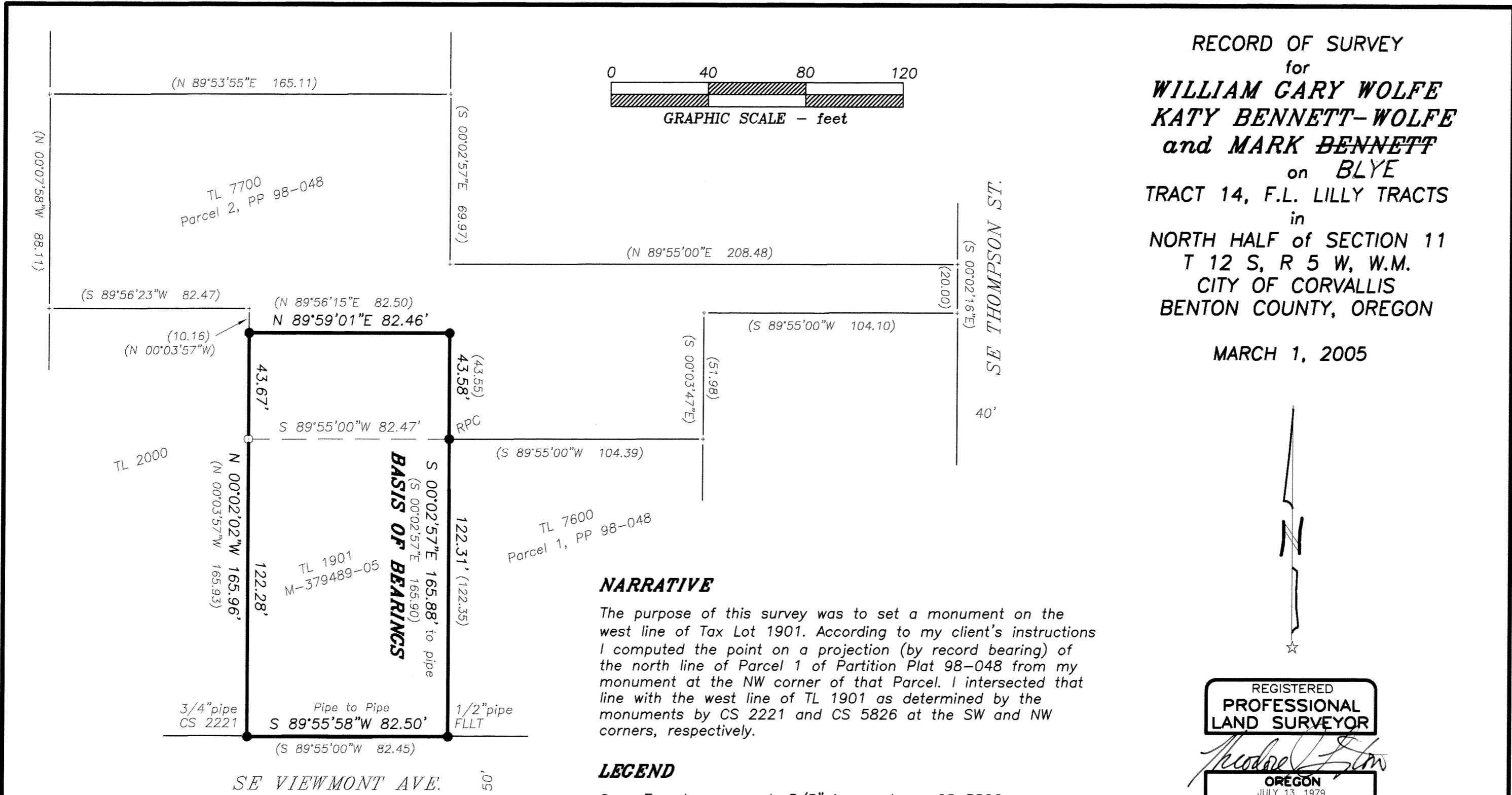
C.S. FILE NO. 10023  
FILING DATE 5-9-05  
FILE SIZE 11x17

DRAWING NUMBER  
**10023**

SAFCO PRODUCTS • NEW HOPE, MINNESOTA  
REORDER BY PART NUMBER 6552

DRAWING NUMBER  
**10023**

SAFCO PRODUCTS • NEW HOPE, MINNESOTA  
REORDER BY PART NUMBER 6552



RECORD OF SURVEY  
for  
**WILLIAM GARY WOLFE  
KATY BENNETT-WOLFE  
and MARK BENNETT**  
on **BLYE**  
TRACT 14, F.L. LILLY TRACTS  
in  
NORTH HALF of SECTION 11  
T 12 S, R 5 W, W.M.  
CITY OF CORVALLIS  
BENTON COUNTY, OREGON

MARCH 1, 2005



**NARRATIVE**

The purpose of this survey was to set a monument on the west line of Tax Lot 1901. According to my client's instructions I computed the point on a projection (by record bearing) of the north line of Parcel 1 of Partition Plat 98-048 from my monument at the NW corner of that Parcel. I intersected that line with the west line of TL 1901 as determined by the monuments by CS 2221 and CS 5826 at the SW and NW corners, respectively.

**LEGEND**

- .....Found monument: 5/8" iron rod per CS 5826 unless otherwise noted.
- RPC...Red Plastic Cap on 5/8"n iron rod set per Partition Plat 98-048.
- FLLT..Plat of F.L. LILLY TRACTS.
- .....Set monument: 5/8"x 30" rebar with red plastic cap stamped "NORTHSTAR PLS 1823."
- ( )....Record data from Partition Plat 98-048.

NOTE: pipe dimension is inside diameter.

REGISTERED  
**PROFESSIONAL  
LAND SURVEYOR**

*Theodore James Langton*

OREGON  
JULY 13, 1979  
THEODORE JAMES LANGTON  
1823

Renewal Date 12/31/2006

**NORTHSTAR SURVEYING, INC.**

720 N.W. 4th Street  
Corvallis, Oregon 97330  
Phone: 541-757-9050

**AFFIDAVIT OF CORRECTION  
PER 2005-388360**

BENTON COUNTY  
SURVEYOR'S OFFICE

C.S. FILE NO. 10023  
FILING DATE 5-9-05  
FILE SIZE 11x17