

**Benton County
Surveyor's Office**

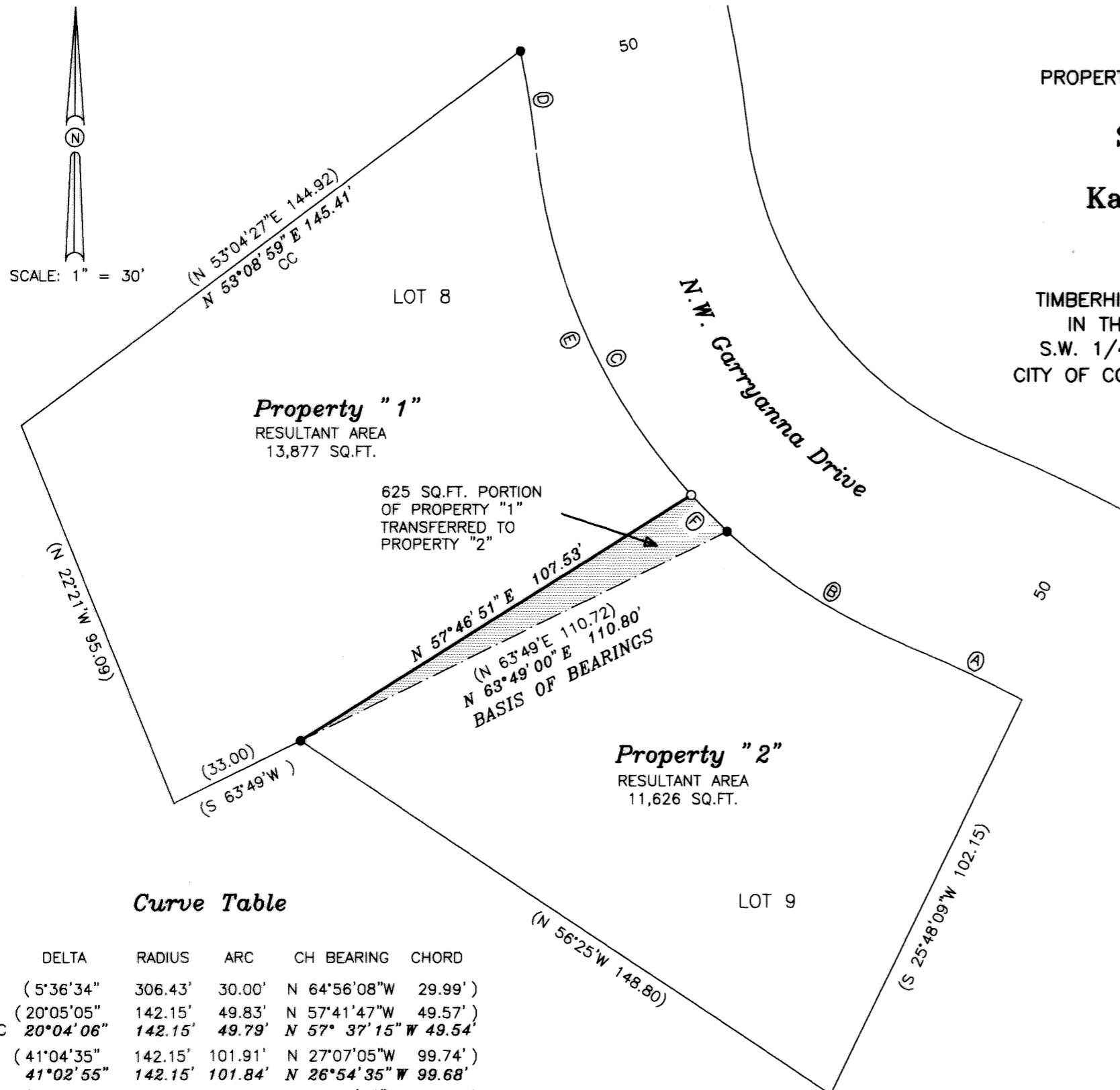
C.S. FILE NO. 10029
 FILING DATE 6-20-05
 FILE SIZE 11X17

LLA04-00009
 MAP OF
 PROPERTY LINE ADJUSTMENT SURVEY
 FOR

**Shirley Woods
 and
 Kamho & Okjin Ha**

MAY 27, 2005

LOTS 8 & 9, BLOCK 9
 TIMBERHILL SOUTHEAST SECOND ADDITION
 IN THE S.M. STOUTS D.L.C. No. 48
 S.W. 1/4 SECTION 23, T11S, R5W, W.M.
 CITY OF CORVALLIS, BENTON COUNTY OREGON



SCALE: 1" = 30'

Property "1"
 RESULTANT AREA
 13,877 SQ.FT.

625 SQ.FT. PORTION
 OF PROPERTY "1"
 TRANSFERRED TO
 PROPERTY "2"

Property "2"
 RESULTANT AREA
 11,626 SQ.FT.

Legend

- FOUND 5/8" IRON ROD WITH YELLOW PLASTIC CAP STAMPED "RCI LS 1079"
- SET 5/8" X 30" STEEL REBAR WITH BLUE PLASTIC CAP STAMPED "DARRYL HARMS, PLS 1079"
- () RECORD DATA FROM PLAT OF "TIMBERHILL SOUTHEAST SECOND ADDITION"
- CC CALCULATED FOR CLOSURE

Narrative

THIS SURVEY WAS PREPARED PURSUANT TO A CONDITION OF CITY OF CORVALLIS COMMUNITY DEVELOPMENT CASE FILE LLA04-00009, AND IS AN ADJUSTMENT TO THE LINE BETWEEN LOTS 8 AND 9, BLOCK 9, TIMBERHILL SOUTHEAST SECOND ADDITION. FOUND MONUMENTS WERE HELD IN POSITION FOR CONTROL, CURVE DIMENSIONS FOR THE WEST LINE OF GARRYANNA ST. WERE PROPORTIONED TO FIT THE FOUND MONUMENTS.

REGISTERED
 PROFESSIONAL
 LAND SURVEYOR

Darryl W. Harms

OREGON
 JULY 30, 1976
 DARRYL W. HARMS
 1079
 RENEWAL DATE 6/30/05

DARRYL W. HARMS, P.L.S.
 720 N.E. GRANGER #1
 P.O. BOX 1051
 CORVALLIS, OR 97339
 PHONE: (541) 745-3948
 FAX: (541) 745-3952

Curve Table

	DELTA	RADIUS	ARC	CH BEARING	CHORD
(A)	5°36'34"	306.43'	30.00'	N 64°56'08"W	29.99'
(B)	20°05'05"	142.15'	49.83'	N 57°41'47"W	49.57'
CC	20°04'06"	142.15'	49.79'	N 57° 37' 15" W	49.54'
(C)	41°04'35"	142.15'	101.91'	N 27°07'05"W	99.74'
	41°02'55"	142.15'	101.84'	N 26°54'35" W	99.68'
(D)	5°52'02"	226.03'	23.15'	N 09°29'38"W	23.14'
	5°51'49"	226.03'	23.13'	N 09°17'07" W	23.12'
(E)	36°13'54"	142.15'	89.89'	N 24°30'05" W	88.40'
(F)	4°49'01"	142.15'	11.95'	N 45°01'32" W	11.95'

LLA04-00009

Property Line Adjustment Approved

Darryl W. Harms 6-16-05
 DEVELOPMENT SERVICES MANAGER DATE

Eugene J. Brann, P.E. 6-16-05
 CITY ENGINEER DATE