

RECORD OF SURVEY

LOCATED IN THE JOHN ROBINSON D.L.C. No. 44,
AND IN THE SOUTHEAST 1/4 OF SECTION 15,
THE NORTHEAST 1/4 OF SECTION 22,
AND THE SOUTHWEST 1/4 OF SECTION 14,
TOWNSHIP 11 SOUTH, RANGE 5 WEST OF THE
WILLAMETTE MERIDIAN,
BENTON COUNTY, OREGON

FOR: CALVARY CHAPEL OF CORVALLIS, INC.

DATE: AUGUST 2, 2005

REGISTERED
PROFESSIONAL
LAND SURVEYOR

David L. Malone

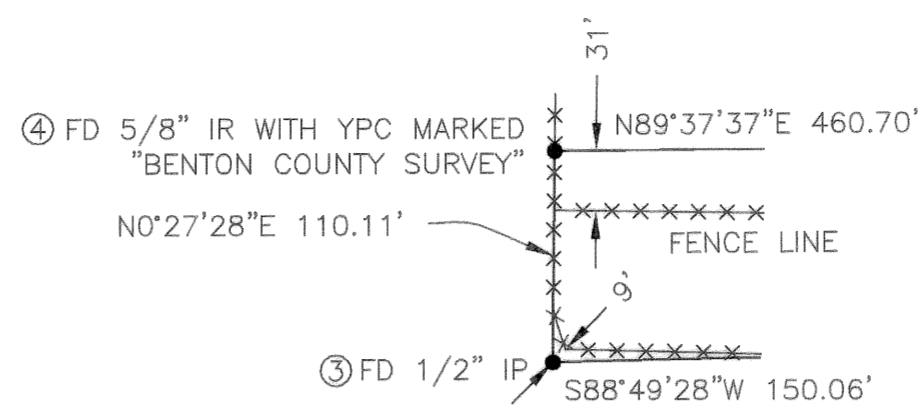
OREGON
JANUARY 12, 1999
DAVID L. MALONE
51523

EXPIRES 12/31/2006

DAVID L. MALONE, P.L.S.
COLE SURVEYING, LLC
6765 S.W. PHILOMATH BLVD.
CORVALLIS, OREGON 97333
(541) 929-5500



COLE
SURVEYING, LLC



DETAIL - NOT TO SCALE

Benton County
Surveyor's Office

C.S. FILE NO. 10039
FILING DATE 8-17-05
FILE SIZE 18x24

SURVEYOR'S NARRATIVE:

PURPOSE

THE PURPOSE OF THIS RECORD OF SURVEY IS TO LOCATE THE MONUMENTS AND REPLACE MISSING MONUMENTS AROUND THE PROPERTY PURCHASED BY CALVARY CHAPEL OF CORVALLIS, INC., AS PER BENTON COUNTY MICROFILM RECORD 2005-389674 AND 2005-389675.

BASIS OF BEARINGS

THE BASIS OF BEARINGS IS THE OLD WEST LINE OF THE PROPERTY AS PER BENTON COUNTY SURVEY 7315.

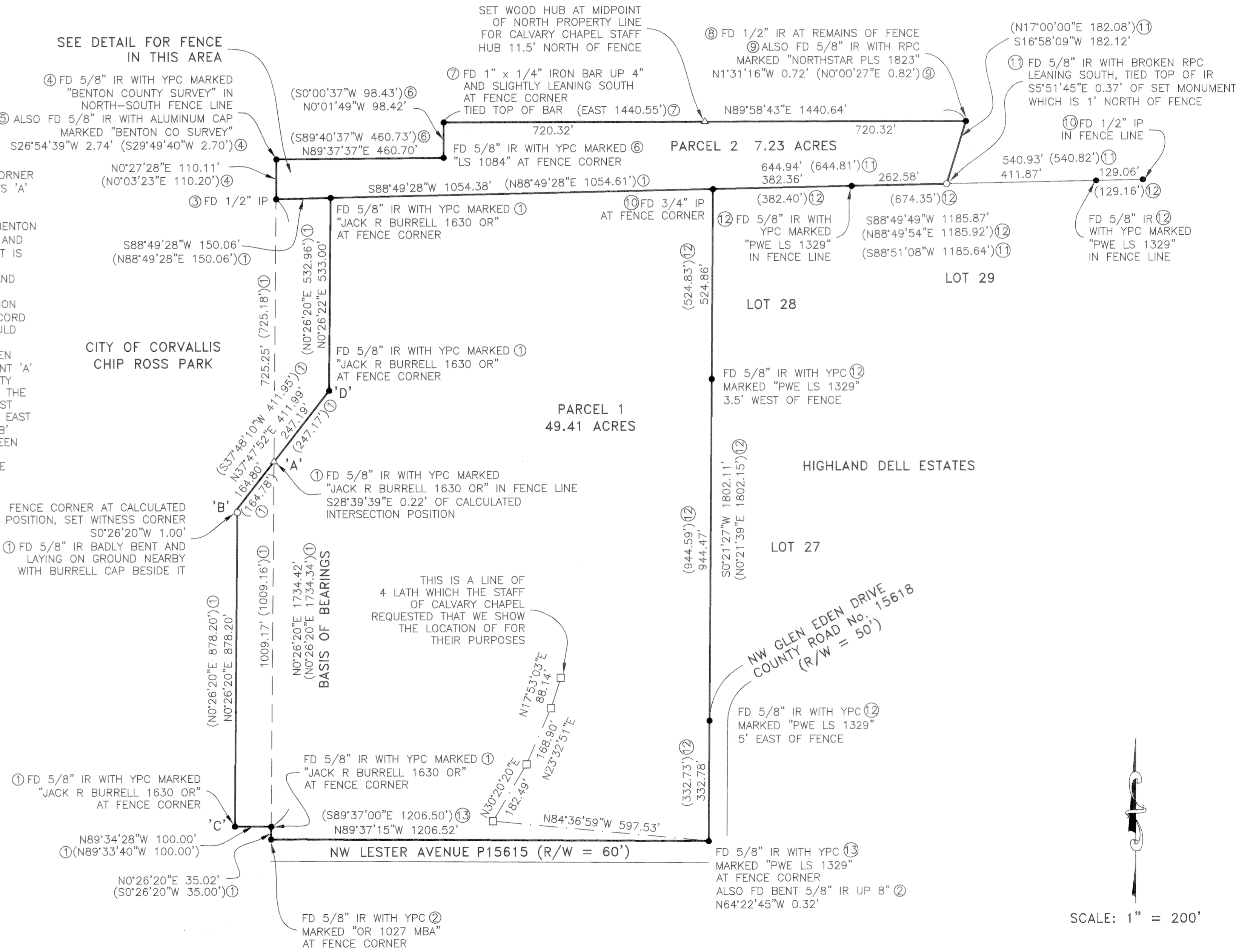
BOUNDARY DETERMINATION

THE MONUMENTS FOUND PER SURVEYS OF RECORD WERE HELD TO DETERMINE THE PROPERTY BOUNDARIES, EXCEPT AT THE SOUTHEAST CORNER OF PARCEL 2 AND ALONG THE WESTERLY LINE OF PARCEL 1 AT POINTS 'A' AND 'B'. THE SOUTHEAST CORNER OF PARCEL 2 WAS RESET AT PROPORTIONATE DISTANCE ON THE NORTH LINE OF HIGHLAND DELL ESTATES HOLDING BENTON COUNTY SURVEY 9384 FOR DISTANCES AND THE 3/4 INCH IRON PIPE AND 1/2 INCH IRON PIPE SET BY BENTON COUNTY SURVEY 2463 FOR WHAT IS NOW THE HIGHLAND DELL ESTATES NORTH LINE. THE MONUMENT AT POINT 'B' WAS RESET HOLDING RECORD BEARING AND DISTANCE FROM POINT 'C'. THIS POSITION FELL MIDWAY BETWEEN A BEARING-BEARING INTERSECTION AND A DISTANCE-DISTANCE INTERSECTION HOLDING POINTS 'C' AND 'D'. THIS POSITION FITS VERY WELL WITH RECORD BEARINGS AND DISTANCES FOR ALL OF THE BOUNDARY LINES AND WOULD HOLD EQUAL AREAS FOR THE PROPERTIES EXCHANGED AS SHOWN BY BENTON COUNTY SURVEY 7315 (A PROPERTY LINE ADJUSTMENT BETWEEN THE CITY OF CORVALLIS AND DAN PETREQUIN). THE MONUMENT AT POINT 'A' WAS SET BY BENTON COUNTY SURVEY 7315 AS PART OF THE PROPERTY LINE ADJUSTMENT AND WAS INTENDED TO BE AT THE INTERSECTION OF THE ORIGINAL EAST LINE OF THE CITY PARK WITH THE NEWLY ADJUSTED EAST LINE. THIS MONUMENT WAS FOUND TO BE OFF OF THE ORIGINAL PARK EAST LINE, AND IF HELD AND USED TO CALCULATE A POSITION FOR POINT 'B' WOULD NOT FIT THE DATA WELL. IT WOULD ALSO CREATE A GAP BETWEEN THE ORIGINAL PARK EAST LINE AND THE PROPERTY THAT THE PARK ACQUIRED AS PART OF THE PROPERTY LINE ADJUSTMENT. I CALLED THE MONUMENT AT POINT 'A' AS BEING OUT OF POSITION FROM THE INTERSECTION AS CALCULATED USING THE POSITION FOR POINT 'B'.

LEGEND

- SET 5/8" x 30" IRON ROD WITH ORANGE PLASTIC CAP MARKED "COLE SURV LS 51523"
- FOUND MONUMENT AS NOTED
- △ CALCULATED POSITION
- FOUND LATH SET BY CALVARY CHAPEL STAFF
- IR IRON ROD
- IP IRON PIPE - INSIDE DIAMETER
- FD FOUND
- RPC RED PLASTIC CAP
- YPC YELLOW PLASTIC CAP
- R/W RIGHT OF WAY
- C.S. BENTON COUNTY SURVEY
- () RECORD INFORMATION AS PER

- ① C.S. 7315
- ② C.S. 6605
- ③ C.S. 2543
- ④ C.S. 7346
- ⑤ C.S. 7022
- ⑥ C.S. 8665
- ⑦ C.S. 2679
- ⑧ C.S. 5189
- ⑨ PARTITION PLAT 1994-59
- ⑩ C.S. 2463
- ⑪ C.S. 9384
- ⑫ PLAT OF "HIGHLAND DELL ESTATES"
- ⑬ C.S. 9213



SCALE: 1" = 200'