

DRAWING NUMBER
10079

SAFCD PRODUCTS • NEW HOPE, MINNESOTA
REORDER BY PART NUMBER 8982

DRAWING NUMBER

SAFCD PRODUCTS • NEW HOPE, MINNESOTA
REORDER BY PART NUMBER 8982

DRAWING NUMBER

SAFCD PRODUCTS • NEW HOPE, MINNESOTA
REORDER BY PART NUMBER 8982

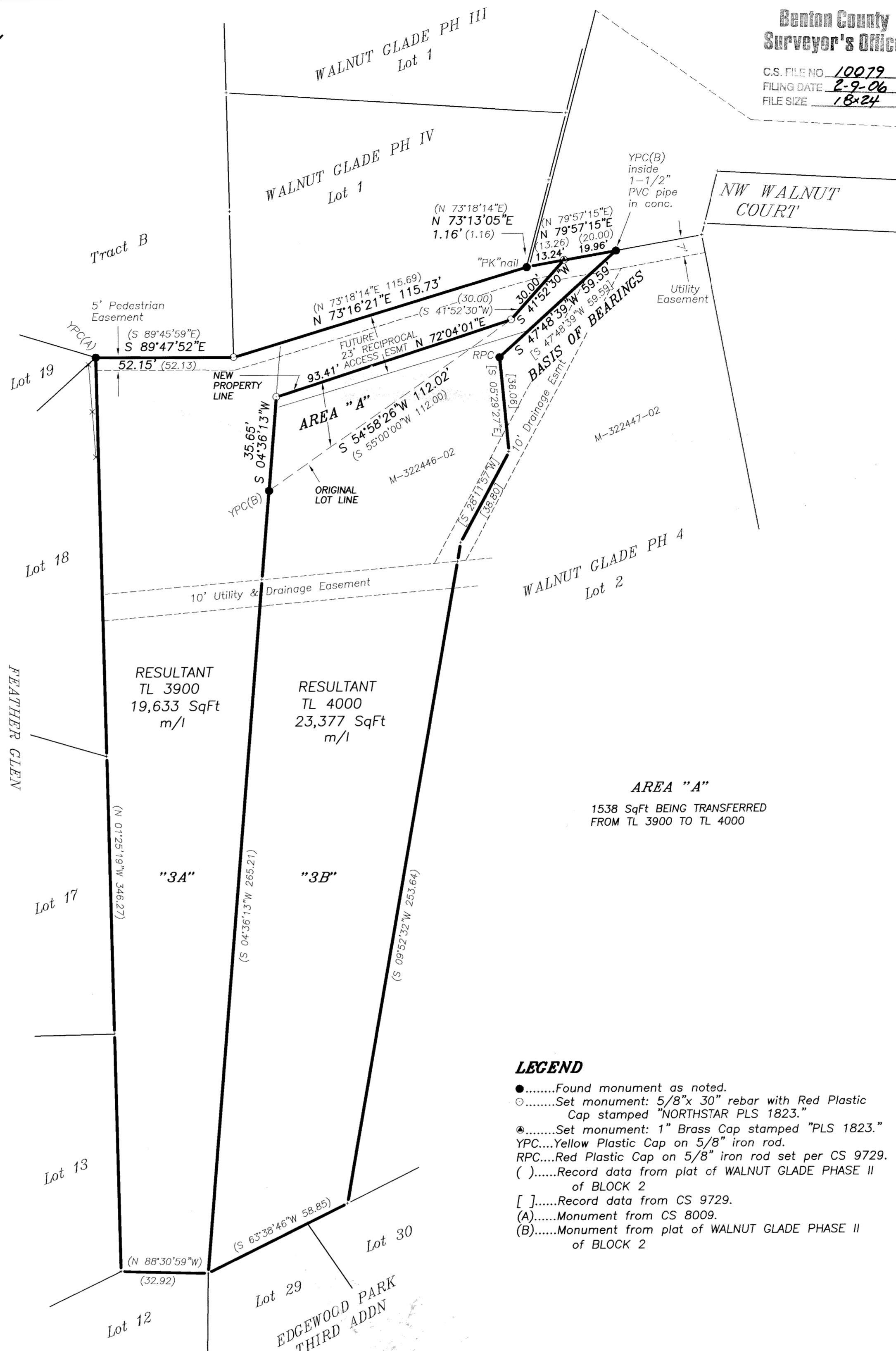
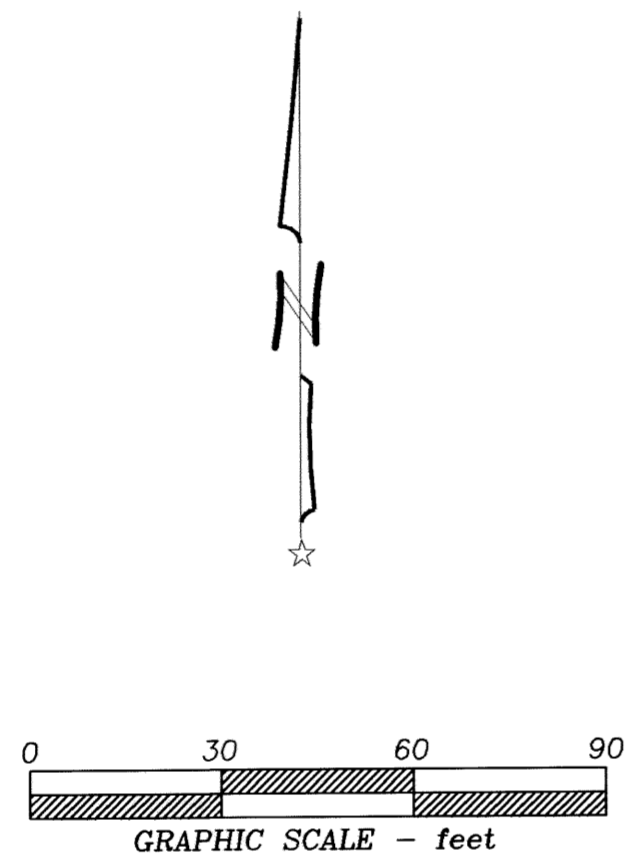
DRAWING NUMBER
10079

SAFCD PRODUCTS • NEW HOPE, MINNESOTA
REORDER BY PART NUMBER 8982

PROPERTY LINE ADJUSTMENT SURVEY
for
STEVE & LINDA MINTKEN
on
LOTS 3A & 3B
WALNUT GLADE SUBD.
PHASE II OF BLOCK 2
in
NE 1/4 SECTION 28
T 11 S, R 5 W, W.M.
CITY OF CORVALLIS
BENTON COUNTY, OREGON
AUGUST 10, 2005

Benton County
Surveyor's Office

C.S. FILE NO. 10079
FILING DATE 2-9-06
FILE SIZE 18x24



LEGEND

-Found monument as noted.
-Set monument: 5/8" x 30" rebar with Red Plastic Cap stamped "NORTHSTAR PLS 1823."
- ▲.....Set monument: 1" Brass Cap stamped "PLS 1823."
- YPC.....Yellow Plastic Cap on 5/8" iron rod.
- RPC.....Red Plastic Cap on 5/8" iron rod set per CS 9729.
- ().....Record data from plat of WALNUT GLADE PHASE II of BLOCK 2
- [].....Record data from CS 9729.
- (A).....Monument from CS 8009.
- (B).....Monument from plat of WALNUT GLADE PHASE II of BLOCK 2

NARRATIVE

This survey is the result of City of Corvallis Community Development Department Case No. LLA05-00009. It represents a modification of the property line between Tax Lots 3900 and 4000, Map 11-5-28AB (Lots 3A and 3B, WALNUT GLADE PHASE II OF BLOCK 2). Our clients own both properties.

I surveyed the east line of TL 4000 for a property line adjustment in 2002, recorded as CS 9729. I used the same survey control network for this project.

The original monument at the northerly corner common to the two Lots has been destroyed. I found a "PK" nail in the sidewalk which apparently was set for the SE corner of Lot 1, WALNUT GLADE PHASE IV, either replacing the original 5/8" iron rod or directly over it. I do not know who set the "PK" nail but it fits the corner position nicely relative to the found original monuments at the NE corner of Lot 3B and the NW corner of Lot 3A. Though the nail is not the original monument I held it to compute the positions of the NW corner of Lot 3B and the SW corner of Lot 1, WALNUT GLADE PHASE IV. I did the computation via right-triangle proportion relative to the found original monuments. I computed the angle point in the common line holding plat record bearing and distance from the computed common northerly corner. The position fit nicely relative to the found original monument at the next angle point to the southwest.

REGISTERED
**PROFESSIONAL
LAND SURVEYOR**
Theodore James Langton
OREGON
JULY 13, 1979
THEODORE JAMES LANGTON
1823
Renewal Date 12/31/2006

APPROVALS
PROPERTY LINE ADJUSTMENT LLA05-00009

D. W. 10-3-05
Dev. Serv. Mgr date

Eugene J. Brown 1-3-06
City Engineer date

NORTHSTAR SURVEYING, INC.
720 N.W. 4th Street
Corvallis, Oregon 97330
Phone: 541-757-9050