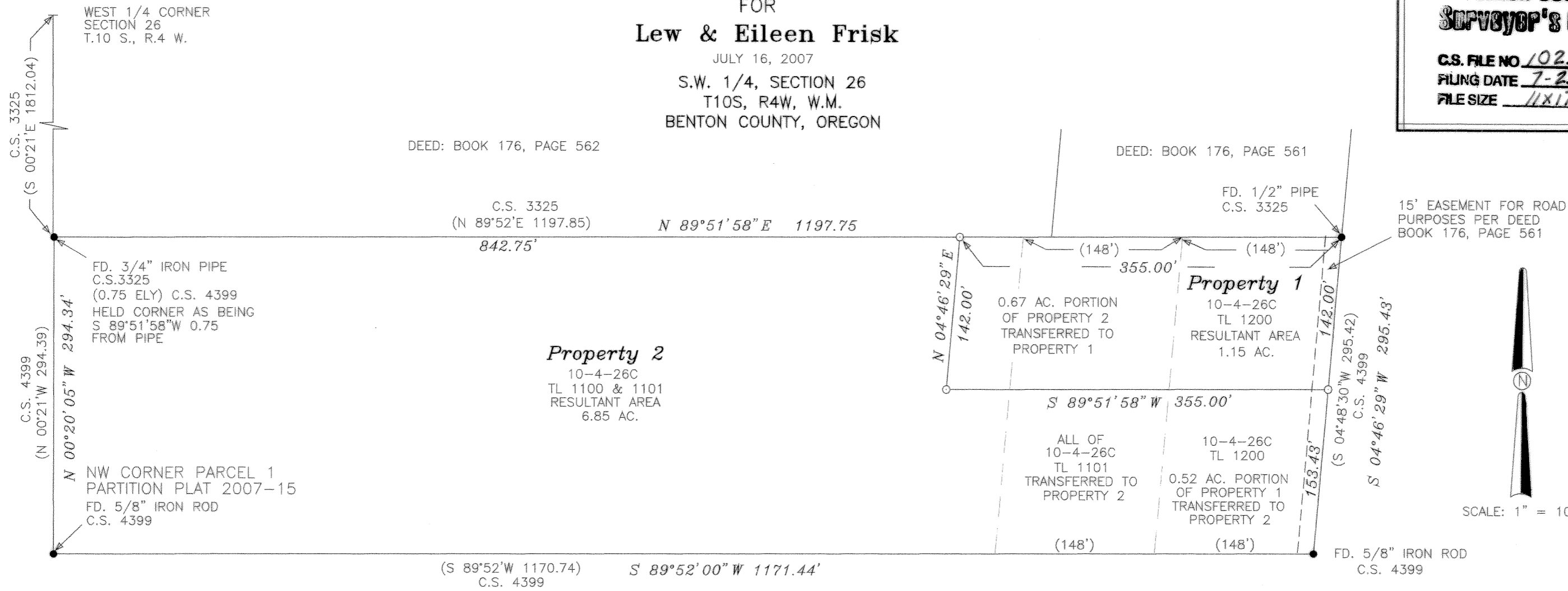


LU-07-026
 PROPERTY LINE ADJUSTMENT SURVEY
 FOR
Low & Eileen Frisk

JULY 16, 2007
 S.W. 1/4, SECTION 26
 T10S, R4W, W.M.
 BENTON COUNTY, OREGON

**Benton County
 Surveyor's Office**

C.S. FILE NO. 10239
 FILING DATE 7-25-07
 FILE SIZE 11x17



15' EASEMENT FOR ROAD
 PURPOSES PER DEED
 BOOK 176, PAGE 561



SCALE: 1" = 100'

(S 89°52'W 1170.74) S 89°52'00" W 1171.44'
 C.S. 4399

BASIS OF BEARINGS

REGISTERED
 PROFESSIONAL
 LAND SURVEYOR

Darryl W. Harms

OREGON
 JULY 30, 1976
 DARRYL W. HARMS
 1079

RENEWAL DATE 6/30/09

DARRYL W. HARMS, P.L.S.
 720 N.E. GRANGER #1
 P.O. BOX 1051
 CORVALLIS, OR 97339
 PHONE: (541) 745-3948
 FAX: (541) 745-3952

Narrative

This survey was prepared pursuant to conditions of Benton County Community Development Dept. Case File No. LU-07-026. Found monuments were held in position for control with exception of the N.W. corner of Property 2. The 3/4" pipe at the NW corner is shown as being (0.75'Ely) per CS 4399 and I held the same for this survey.

Legend

- MONUMENT FOUND, TYPE AND SOURCE NOTED. PIPES MEASURED INNER DIAMETER
- SET 5/8" X 30" IRON ROD WITH YELLOW PLASTIC CAP STAMPED "DARRYL HARMS, PLS 1079"
- () RECORD DATA FROM C.S. 4399 EXCEPT AS NOTED.

LU-07-026
 PROPERTY LINE ADJUSTMENT
 APPROVED

Conrad Verret 7/25/07
 BENTON COUNTY PLANNING OFFICIAL DATE