

RECORD OF SURVEY  
for **LIGHTNING S. CORP.**

in the NE1/4 SECTION 7, T12S, R5W, W.M.  
BENTON COUNTY, OREGON  
NOVEMBER 27, 2007

Benton County  
Surveyor's Office

C.S. FILE NO. 10269  
FILING DATE 12-13-07  
FILE SIZE 18x24

**NARRATIVE**

The purpose of this survey is to monument the boundaries of Tax Lot 2201 of Tax Map 12-5-07A. Said tract is described by Document No. 2007-425808 of the Benton County Deed Records. Said deed calls for ODOT drawing no. 1R-2-985, which also shows on ODOT right-of-way map 4B-23-3.

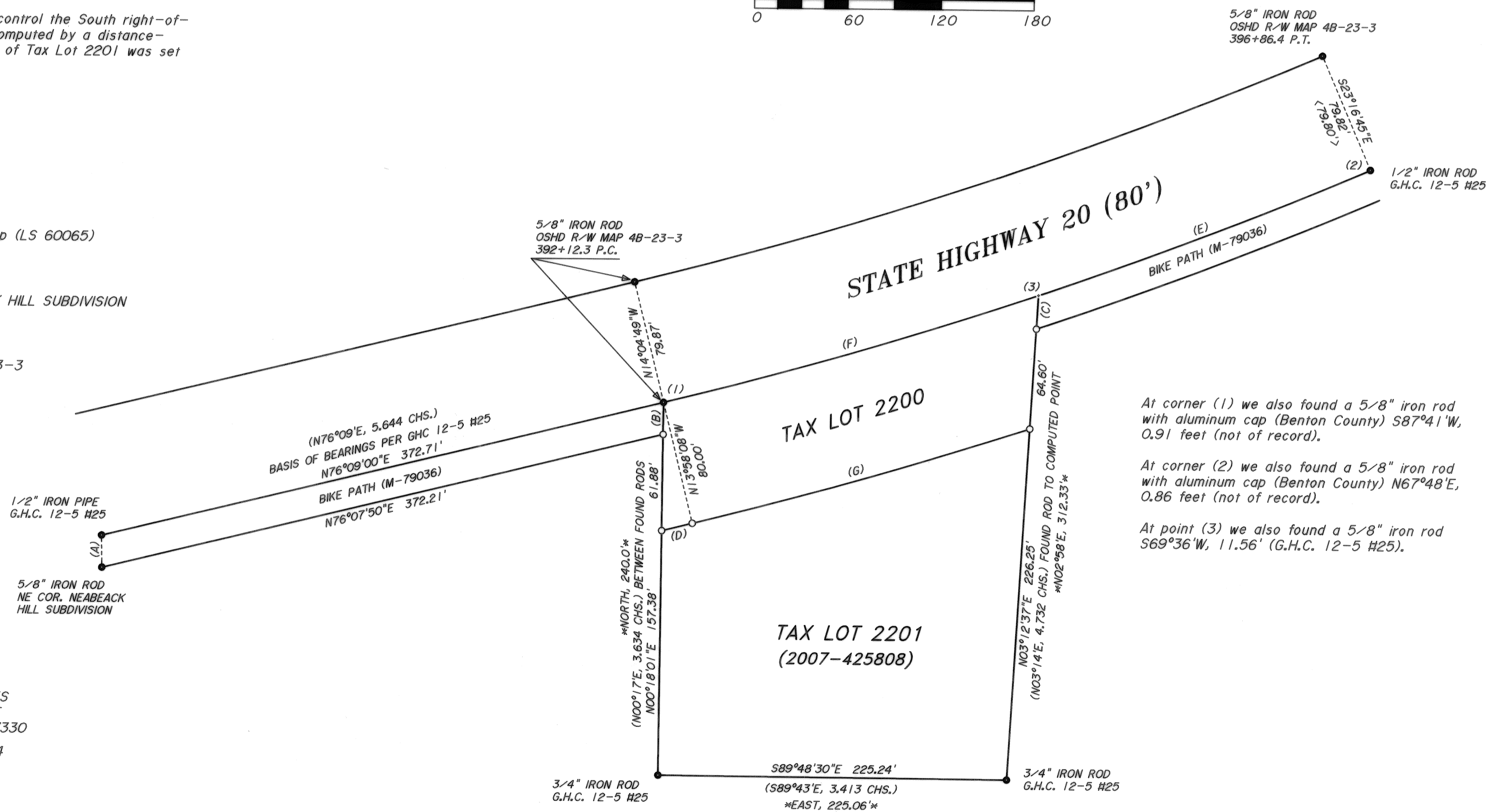
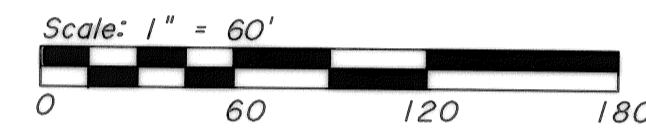
The above noted drawing no. 1R-2-985 shows monuments at the four corners of the original stock pile site, with bearings and distances as called in the above noted deed. GHC 12-5 H25 also shows monuments, with bearings on a slightly different basis, but with an angular relationship within 00'01" of the deed calls. We find monuments as called for by GHC 12-5 H25 and ODOT map 4B-23-3, and have accepted them as the true corner points.

The reference corner to the Northeast corner of the original ODOT tract has been destroyed. We therefore recomputed that position (point 3) at right angles to, and 40 feet from centerline station 394+60.7 (as per deed calls).

Monuments found at points (1) and (2) were held to control the South right-of-way line of the Highway, with the radius point being computed by a distance-distance intersection from said points. The North line of Tax Lot 2201 was set parallel to, and 80 feet from, that right-of-way line.

- Monuments found as noted
- Set 5/8" X 30" iron rod with plastic cap (LS 60065)
- + Computed point
- ( ) Data of record as per GHC 12-5 H25
- [ ] Data of record as per plat of NEABECK HILL SUBDIVISION
- < > Data of record as per C.S. 7579
- \* \* Data of record as per 2007-425808
- (( )) Data of record as per ODOT map 4B-23-3
- GHC Galloway Hard Copy
- ODOT Oregon Department of Transportation
- Iron pipe diameters are inside measure

- (A) = S01°08'16"E 20.63' [S00°58'48"E, 20.52']  
 (B) = S00°18'01"W 20.63'  
 (C) = N03°12'37"E 21.58'  
 (D) = N76°09'00"E 20.34'  
 (E) Δ = 04°30'55"  
 R = 2904.79' ((2904.79'))  
 A = 228.92'  
 LC = N68°48'19"E 228.86'  
 (F) Δ = 04°58'05"  
 R = 2904.79' ((2904.79'))  
 A = 251.87'  
 LC = N73°32'49"E 251.79'  
 (G) Δ = 04°20'40"  
 R = 2984.79'  
 A = 226.32'  
 LC = N73°51'32"E 226.26'



At corner (1) we also found a 5/8" iron rod with aluminum cap (Benton County) S87°41'W, 0.91 feet (not of record).

At corner (2) we also found a 5/8" iron rod with aluminum cap (Benton County) N67°48'E, 0.86 feet (not of record).

At point (3) we also found a 5/8" iron rod S69°36'W, 11.56' (G.H.C. 12-5 H25).

REGISTERED  
PROFESSIONAL  
LAND SURVEYOR

OREGON  
JULY 15, 2003  
BRIAN M. PETERSON  
60065  
RENEWAL: 12-31-08

SURVEYED BY:  
PETERSON & ASSOCIATES  
8155 NW MITCHEL DRIVE  
CORVALLIS, OREGON 97330  
PHONE: 541-757-1794