

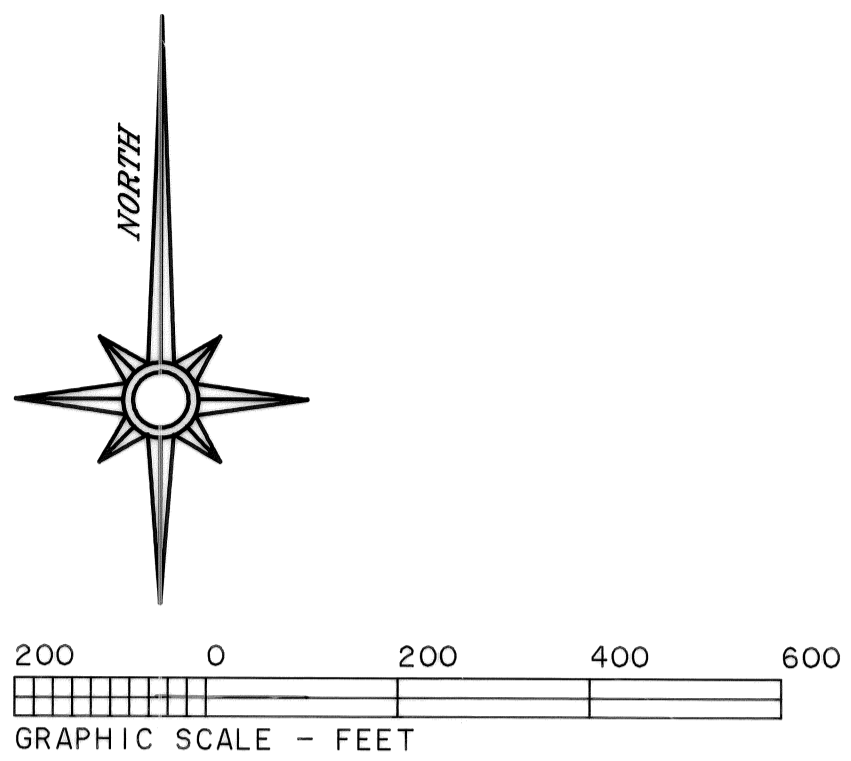
PROPERTY LINE ADJUSTMENT SURVEY
for FRANK NUSBAUM
 in the Southeast 1/4 of Section 12,
 Township 14 South, Range 6 West, Willamette Meridian,
 Benton County, Oregon
 July 27, 2007
 Benton County Development File LU-06-063

Benton County
Surveyor's Office

C.S. FILE NO. 10359
 FILING DATE 3-16-09
 FILE SIZE 18x24

LEGEND

- SET 5/8" X 30" IRON ROD WITH YELLOW PLASTIC CAP MARKED "SPRINGER LS1102".
- FOUND MONUMENT AS NOTED.
- () DATA OF RECORD FROM HARDCOPY SURVEY G14600007.
- [] DATA OF RECORD FROM DEED 2006-405497.
- A—A— ADJUSTED PROPERTY LINE.



CORNER TABLE

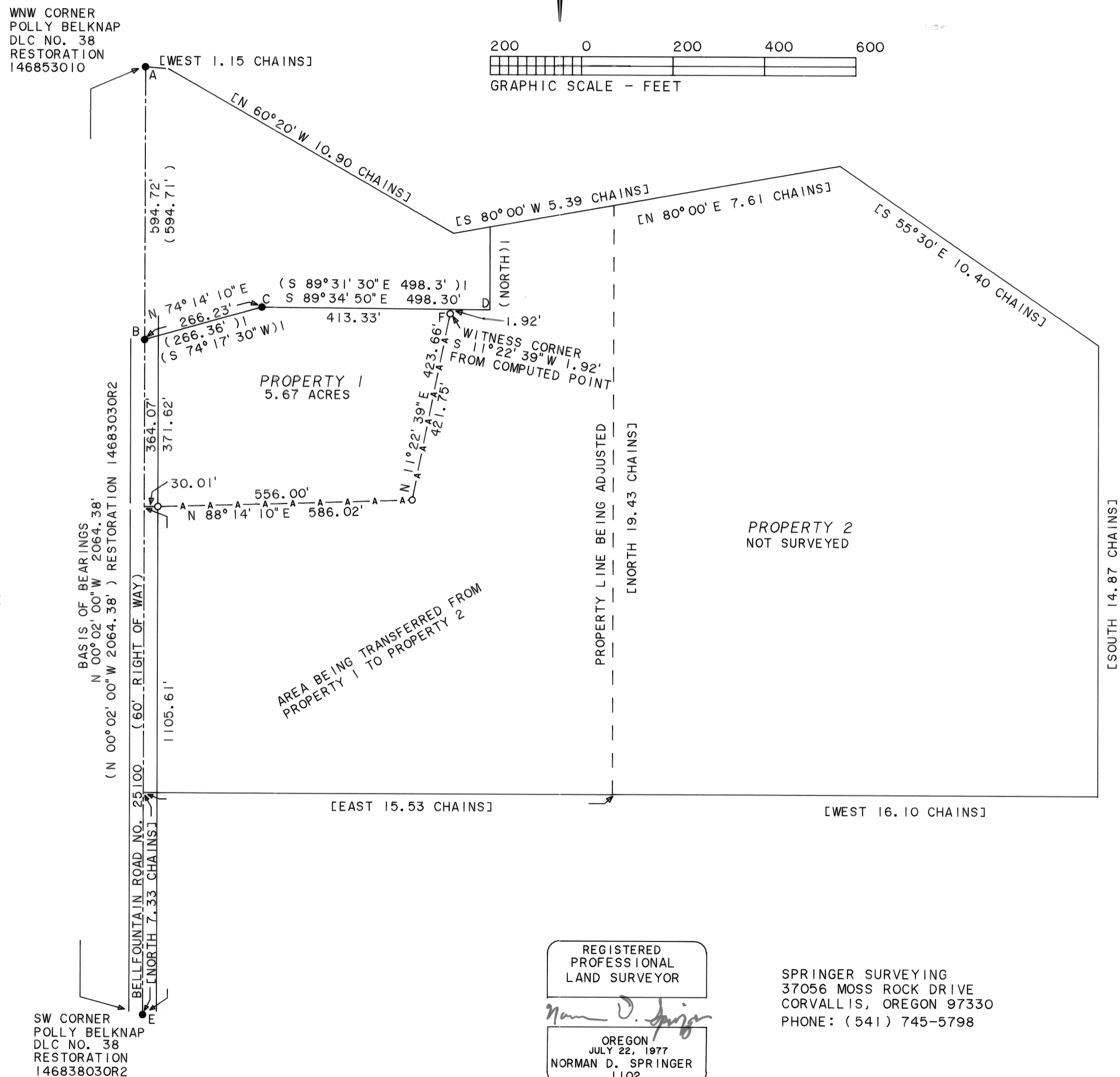
- A WNW CORNER POLLY BELKNAP DLC NO. 38 FOUND 3-1/4" BRASS CAP MARKED "DLC 56 DLC 53 DLC 38 T14SR6W 1987" IN MONUMENT BOX. (RESTORATION 146853010)
- B PINPOINTED NOISE WITH METAL LOCATOR, DID NOT EXPOSE. (PIPE CALLED FOR ON HARDCOPY G14600007)
- C FOUND 1/2 INCH IRON PIPE (HARDCOPY G14600007)
- D NO MONUMENT FOUND. COMPUTED POINT FALLS AT FENCE CORNER.
- E SW CORNER POLLY BELKNAP DLC NO. 38 FOUND 3-1/4 INCH BRASS CAP MARKED "T14SR6W DLC38 DLC53 DLC39 2004" IN MONUMENT BOX. (RESTORATION 146838030R2)
- F UNDERGROUND ROCK PREVENTED SETTING MONUMENT AT TRUE POINT, SET WITNESS CORNER S 11°22'39" W 1.92 FEET.

NARRATIVE

THIS SURVEY WAS DONE TO MONUMENT THE PROPERTY LINE ADJUSTMENT AS REQUIRED BY THE TENTATIVE APPROVAL OF BENTON COUNTY DEVELOPMENT FILE LU-06-063. THE POSITION OF THE ADJUSTED LINE WAS DETERMINED BY THE OWNER. FIELD MEASUREMENTS WERE MADE WITH A 1-SECOND READING ELECTRONIC TOTAL STATION. PIPE MEASUREMENTS ARE INSIDE DIAMETER.

APPROVAL

CONDITIONS OF APPROVAL NOT MET 3-16-09
 BENTON COUNTY PLANNING OFFICIAL _____ DATE _____



SW CORNER
 POLLY BELKNAP
 DLC NO. 38
 RESTORATION
 146838030R2

REGISTERED
 PROFESSIONAL
 LAND SURVEYOR

 OREGON
 JULY 22, 1977
 NORMAN D. SPRINGER
 1102
 RENEWAL DATE 6/30/08

SPRINGER SURVEYING
 37056 MOSS ROCK DRIVE
 CORVALLIS, OREGON 97330
 PHONE: (541) 745-5798