

RECORD OF SURVEY

for **DAN WINNEY**

in the SW1/4 SECTION 3, T14S, R8W, W.M.

BENTON COUNTY, OREGON

MAY 22, 2009

Benton County
Surveyor's Office

C.S. FILE NO. 10379
FILING DATE 6-24-09
FILE SIZE 11x14

CORNER NOTES:

(1) CW1/16 CORNER SECTION 3

Set 5/8" X 30" iron rod with plastic cap (LS 1084)

BT's found:

28" Maple, (North, 0.720 chs.) Scribing visible on sawed face
Found 1 1/4" iron pipe (16" above surface), N07°12'40"E, 8.33 ft.
Corner lies 75' East of creek. (See NARRATIVE)

NARRATIVE

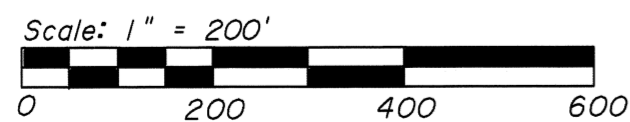
The purpose of this survey is to monument the CW1/16 corner of Section 3 (NE corner of the NW1/4SW1/4), and to mark the indicated boundary lines.

In 1931 C.S. 1167 set a 1 1/4" pipe with 2 BT's (Field Book 75, Pages 2-4) for the CW1/16 corner. We found a 1 1/4" pipe 16" above the ground, which appeared to be disturbed. We therefore attempted to verify this corner by locating the noted BT's. We cut into a 28" Maple and found scribes from C.S. 1167 (but no trace of the second BT), which confirmed the corner position, as monumented with the 1 1/4" pipe, has been disturbed. We reset the corner at record bearing and distance from the center of the found BT, and drove the found pipe flush with the ground.

An existing fence line along the North-South marked line was in general within 3 feet of the true line, but wandered as much as 15 feet East of true line near the creek at the North end of this line.

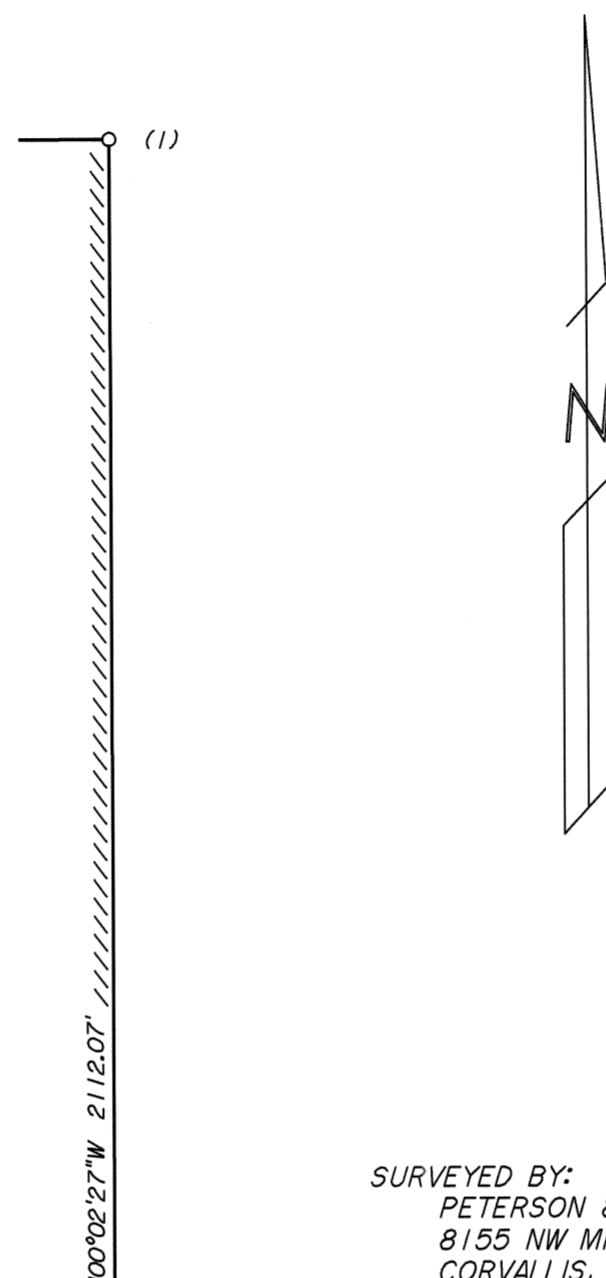
Monuments found as per G.H.C. 14-8-00002 and C.S. 1167 were held as control for this survey.

- Found 5/8" bolt per GHC 14-8-00002
- Monument set as noted
- () Data of record per GHC 14-8-00002
- ////// Boundary lines marked with 6' steel posts, pink painted blazes, and orange flagging
- G.H.C. Galloway Hard Copy



(S89°38'W, 7.70 CHS.)
NW CORNER
DLC NO. 38

(S89°38'00"W 576.50'
(S89°38'W, 8.75 CHS.)
BASIS OF BEARINGS AS PER
G.H.C. 14-8-00002



SURVEYED BY:
PETERSON & ASSOCIATES
8155 NW MITCHEL DRIVE
CORVALLIS, OREGON 97330
PHONE: 541-757-1794

REGISTERED
PROFESSIONAL
LAND SURVEYOR

OREGON
JULY 31, 1976
JIM S. PETERSON
1084
RENEWAL: 12-31-10