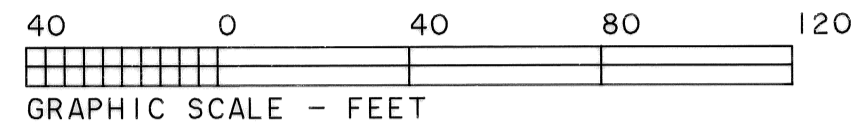


RECORD OF SURVEY/PROPERTY LINE ADJUSTMENT
for the CITY OF PHILOMATH
in the Southeast 1/4 of Section 12,
and Lot 2, Brown's Addition to the City of Philomath,
Township 12 South, Range 6 West, Willamette Meridian,
Benton County, Oregon
January 25, 2010

CITY OF PHILOMATH PLANNING FILE NUMBER P09-01

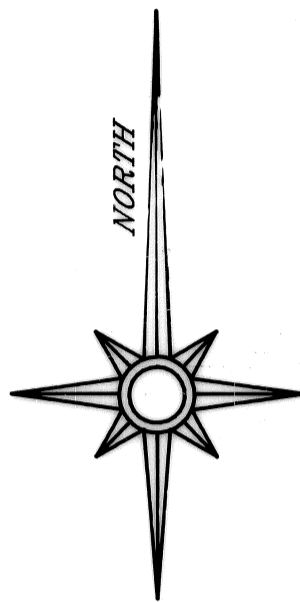
Benton County
Surveyor's Office

C.S. FILE NO 10409
 FILING DATE 2-4-10
 FILE SIZE 18x24



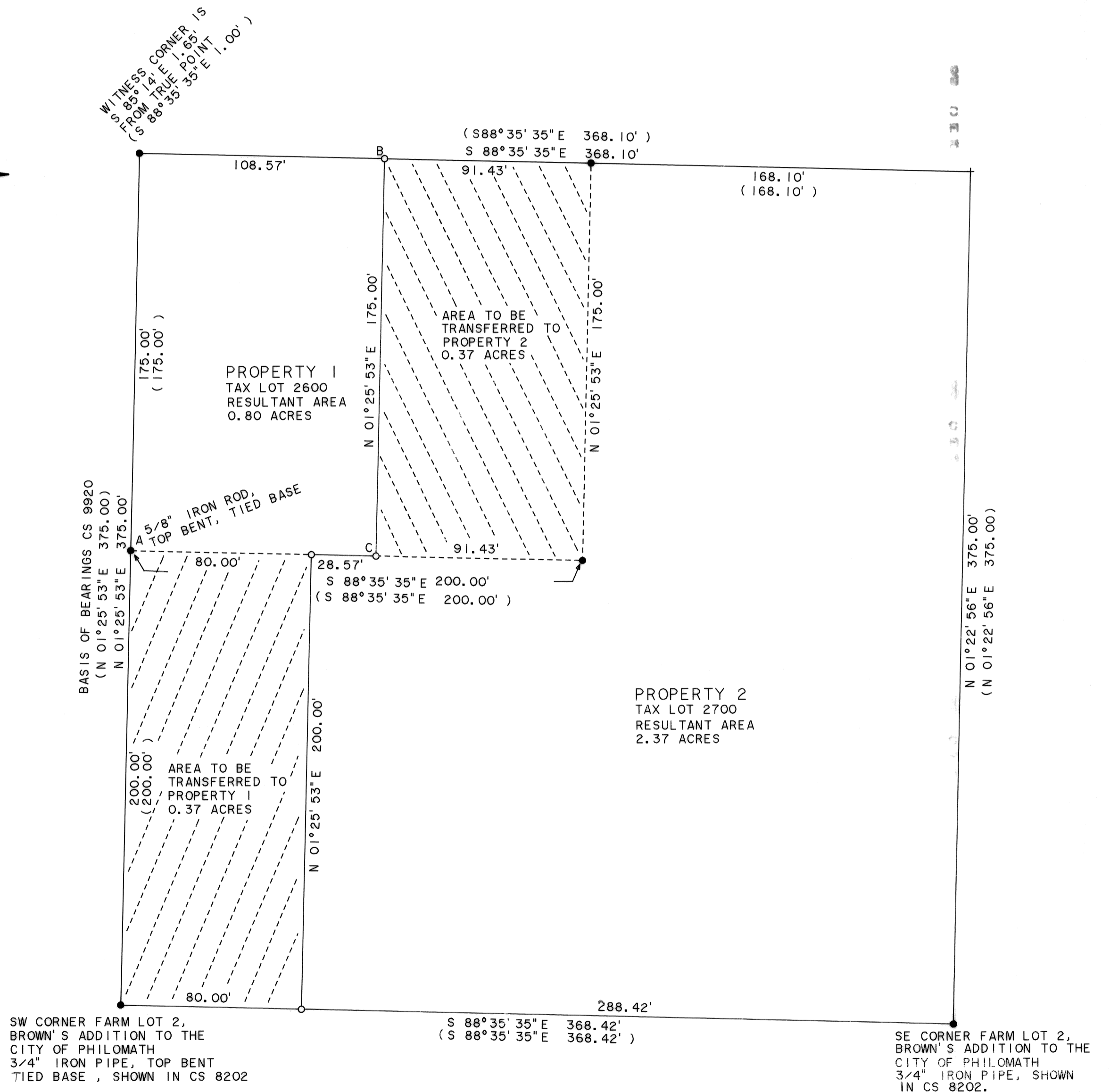
LEGEND

- FOUND 5/8" IRON ROD WITH YELLOW PLASTIC CAP MARKED "BARKER PLS636" PER CS 9920, OR AS NOTED.
- SET 5/8" X 30" IRON ROD WITH YELLOW PLASTIC CAP MARKED "SPRINGER LS1102".
- () DATA OF RECORD FROM CS 9920, OR CALCULATED FROM CS 9920.
- + COMPUTED POINT, NO MONUMENT FOUND OR SET.



NARRATIVE

This survey was done to monument a property line adjustment between Property 1 and Property 2 as shown hereon. The Basis of Bearings is along the West line from CS 9920. Corner monuments set and/or tied by CS 9920 were held to control the lines. Ties to found monuments were made in 2004. Since that time construction has taken place on the site and the monument at "A" is now bent and has no cap. Corners set by this survey were set from the 2004 control points. Field measurements were made with a 1-second reading electronic total station, using both robotic and manual operations. Note that CS 9920 set a witness corner 1.00 foot easterly, on line, from the Northwest corner of Property 1 for a witness corner. I found the monument to be S 85°14' E 1.65 feet from the true point and apparently undisturbed. Pipe diameters are inside measurement. There is an East-West fence 5.6 feet South of "B". There is also an East-West fence 3.0 feet North of "C".



REGISTERED
 PROFESSIONAL
 LAND SURVEYOR

Norman D. Springer

OREGON
 JULY 22, 1977
 NORMAN D. SPRINGER
 1102

RENEWAL DATE 6/30/10

SPRINGER SURVEYING
 37056 MOSS ROCK DRIVE
 CORVALLIS, OREGON 97330
 PHONE: (541) 745-5798

CITY OF PHILOMATH PLANNING OFFICIAL

2-3-10
 DATE