

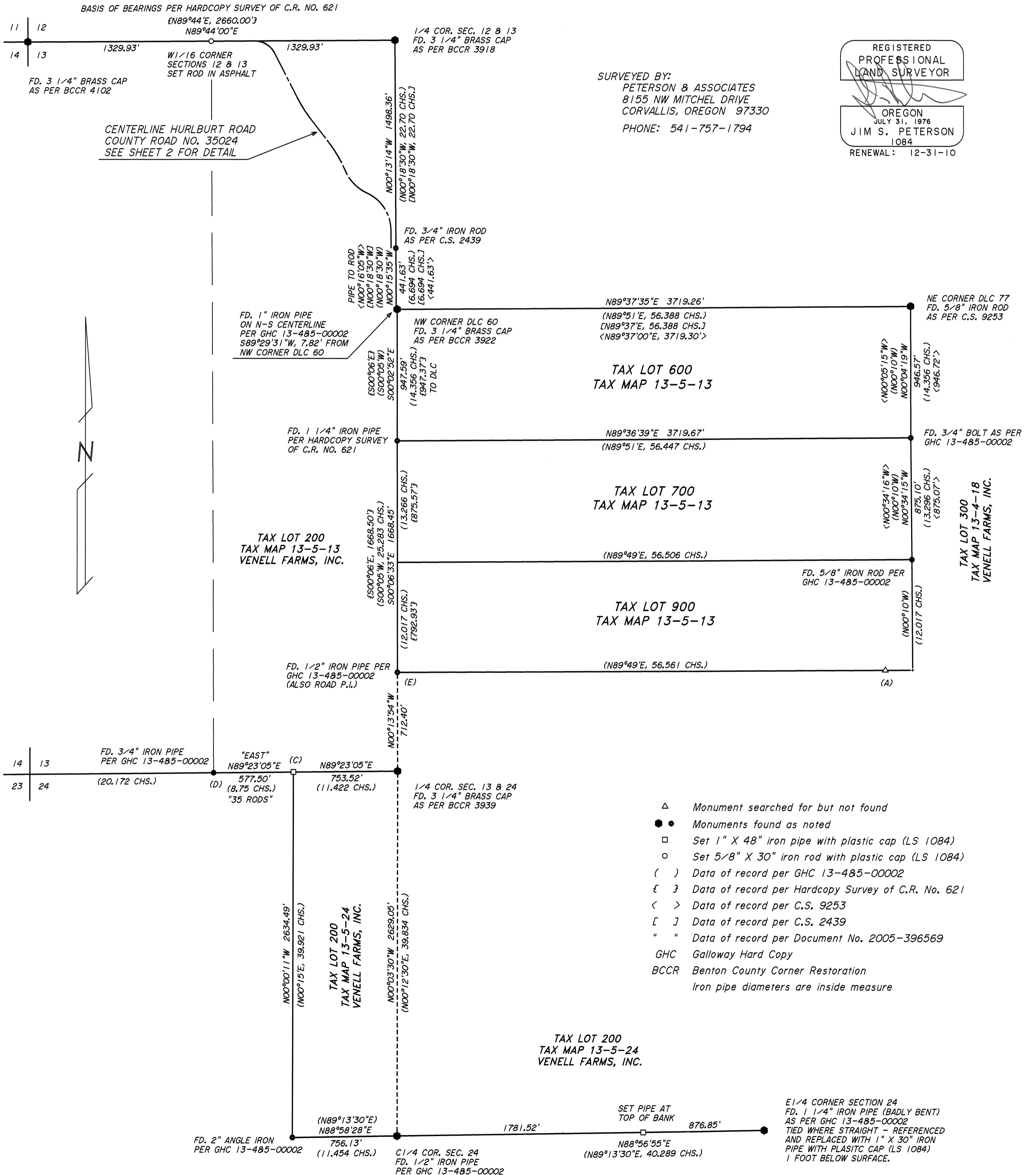
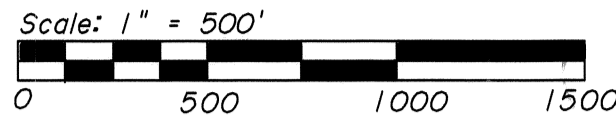
RECORD OF SURVEY

Benton County
Surveyor's Office

for **VENELL FARMS, INC.**
BENTON COUNTY

C.S. FILE NO. 10433
FILING DATE 8-26-10
FILE SIZE 18x24

in SECTION 13, T13S, R5W, W.M.
and in SECTION 24, T13S, R5W, W.M.
and the ABEL HURLBUT D.L.C. NO. 60
BENTON COUNTY, OREGON
AUGUST 25, 2008

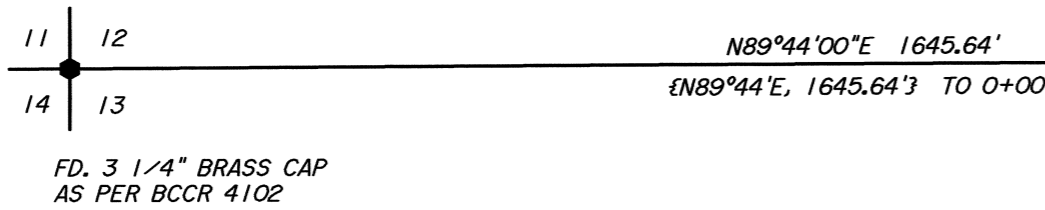


SURVEYED BY:
PETERSON & ASSOCIATES
8155 NW MITCHEL DRIVE
CORVALLIS, OREGON 97330
PHONE: 541-757-1794

REGISTERED
PROFESSIONAL
LAND SURVEYOR
[Signature]
OREGON
JULY 31, 1976
JIM S. PETERSON
1084
RENEWAL: 12-31-10

- △ Monument searched for but not found
- Monuments found as noted
- Set 1" X 48" iron pipe with plastic cap (LS 1084)
- Set 5/8" X 30" iron rod with plastic cap (LS 1084)
- () Data of record per GHC 13-485-00002
- £ } Data of record per Hardcopy Survey of C.R. No. 621
- < > Data of record per C.S. 9253
- [] Data of record per C.S. 2439
- " " Data of record per Document No. 2005-396569
- GHC Galloway Hard Copy
- BCCR Benton County Corner Restoration
- Iron pipe diameters are inside measure

C.S. FILE NO. 10433
FILING DATE 8-26-10
FILE SIZE 18x24



NARRATIVE

The purpose of this survey is as follows: a) To recover monuments along the East line of the Abel Hurlbut D.L.C. No. 77, b) To monument a portion of Hurlburt Road which is being relocated, c) To monument adjoining portions of Hurlburt Road in it's original location, d) To reestablish the Northwest corner, and monument a point along the South line of Tax Lot 200 of Tax Map 13-5-24 (Tract C of Parcel 6 of 2003-351152 of the Benton County Deed Records), and e) To establish the Northwest corner of Tax Lot 200 of Tax Map 13-5-13 (Tract B of Parcel 6 of 2003-351152 of the Benton County Deed Records).

We recovered the Northeast corner of D.L.C. No. 77, and two monuments to the South as shown. At point (A) we searched for a 1/2" iron pipe as per the Hardcopy Survey of C.R. No. 621, but did not find it.

We did not recover the 1/2" iron pipe at Road P.I. 0+97.86 at the North end of Hurlburt Road. We therefore computed centerline station 0+00 at record distance, along the North line of Section 13, from the Northwest corner of Section 13. We then used record data, as per the Hardcopy Survey of C.R. No. 621, to compute the centerline of Hurlburt Road to station 25+05.00. Our computed point for 25+05.00 fell about 0.3 feet off the true centerline, 0.14 feet closer than record to the Northwest corner of D.L.C. No. 60, and 0.36 feet further than record from the 1 1/4" iron pipe at point (B). Rather than adjust out these minor differences, we held the record road data and just rotated the initial road bearing to bring 25+05.00 onto the true centerline.

At the Northwest corner of Tax Lot 200 of Tax Map 13-5-24, point (C), we found a 1 1/2" shaft lying on the ground. We reset this corner at the record deed distance of 35 rods from the found pipe at (D).

The original survey notes of the Abel Hurlbut D.L.C. call for the 1/4 corner of Sections 13 and 24 to be on the West line of said claim. GHC 13-485-00002 and the Hardcopy Survey for C.R. No. 621 treat the West claim line to be a straight line between the Northwest and Southwest claim corners, calling the 1/4 corner to be slightly off that line. The 1/4 corner was also not held to control the centerline of County Road No. 621. Our bearing and distance between the 1/2" pipe at (E) and the 1/4 corner is not intended to represent the West line of the Claim or the North-South centerline of Section 13, but is simply a tie between monuments.

Monuments found as per GHC 13-485-00002, C.S. 2439, C.S. 9253, BCCR 3918, BCCR 3922, BCCR 4102, and the Hardcopy Survey of C.R. No. 621 were held as control for this survey.

NOTE:
WESTERLY RIGHT-OF-WAY
MONUMENTS ARE SET 18"
BELOW SURFACE.

SURVEYED BY:
PETERSON & ASSOCIATES
8155 NW MITCHEL DRIVE
CORVALLIS, OREGON 97330
PHONE: 541-757-1794

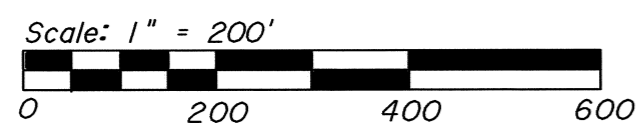
TAX LOT 200

PORTION OF HURLBURT
ROAD TO BE VACATED

PORTION OF HURLBURT
ROAD TO BE DEDICATED

REGISTERED
PROFESSIONAL
LAND SURVEYOR

OREGON
JULY 31, 1976
JIM S. PETERSON
1084
RENEWAL: 12-31-10



CURVE	RADIUS	LENGTH	DELTA	CHORD	CH.BEARING
(C1)	179.15'	197.56'	63°11'06"	187.70'	S58°41'39"E
(C2)	159.15'	175.51'	63°11'06"	166.75'	S58°41'40"E
(C3)	139.15'	153.45'	63°11'06"	145.79'	S58°41'40"E
(C4)	934.92'	171.34'	10°30'02"	171.10'	S32°22'19"E
(C5)	954.92'	175.01'	10°30'02"	174.76'	S32°22'19"E
(C6)	974.92'	178.67'	10°30'02"	178.42'	S32°22'19"E
(C7)	974.92'	244.75'	14°23'03"	244.11'	S30°25'50"E
(C8)	954.92'	239.73'	14°23'03"	239.10'	S30°25'50"E
(C9)	934.92'	234.71'	14°23'03"	234.10'	S30°25'50"E
(C10)	290.00'	212.81'	42°02'45"	208.07'	S44°15'41"E
(C11)	315.00'	231.16'	42°02'45"	226.01'	S44°15'41"E
(C12)	340.00'	249.50'	42°02'45"	243.94'	S44°15'41"E
(C13)	321.40'	364.92'	65°03'17"	345.63'	S32°45'25"E
(C14)	296.40'	336.54'	65°03'17"	318.75'	S32°45'25"E
(C15)	271.40'	308.15'	65°03'17"	291.86'	S32°45'25"E
(C16)	680.00'	165.95'	13°58'59"	165.54'	S07°13'15"E
(C17)	700.00'	170.83'	13°58'59"	170.41'	S07°13'15"E
(C18)	720.00'	175.72'	13°58'59"	175.28'	S07°13'15"E
(C19)	736.19'	181.50'	14°07'33"	181.04'	S07°08'58"E
(C20)	716.19'	176.57'	14°07'33"	176.12'	S07°08'58"E
(C21)	696.19'	171.64'	14°07'33"	171.21'	S07°08'58"E

FD. 1 1/4" IRON PIPE
PER HARDCOPY SURVEY
OF C.R. NO. 621

RECORD OF SURVEY

for **VENELL FARMS, INC.**
BENTON COUNTY

in SECTION 13, T13S, R5W, W.M.
and in SECTION 24, T13S, R5W, W.M.
and the ABEL HURLBUT D.L.C. NO. 60
BENTON COUNTY, OREGON
AUGUST 25, 2008