

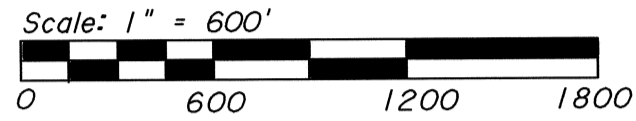
RECORD OF SURVEY

for **STARKER FORESTS, INC.**

in SECTIONS 10,11,14, & 15, T10S, R6W, W.M.
and in D.L.C. NO.'S 51,52,53, & 54, T10S, R6W, W.M.
BENTON AND POLK COUNTIES, OREGON
JUNE 4, 2010

Benton County
Surveyor's Office

C.S. FILE NO. 10449
FILING DATE 12-9-10
FILE SIZE 18x24

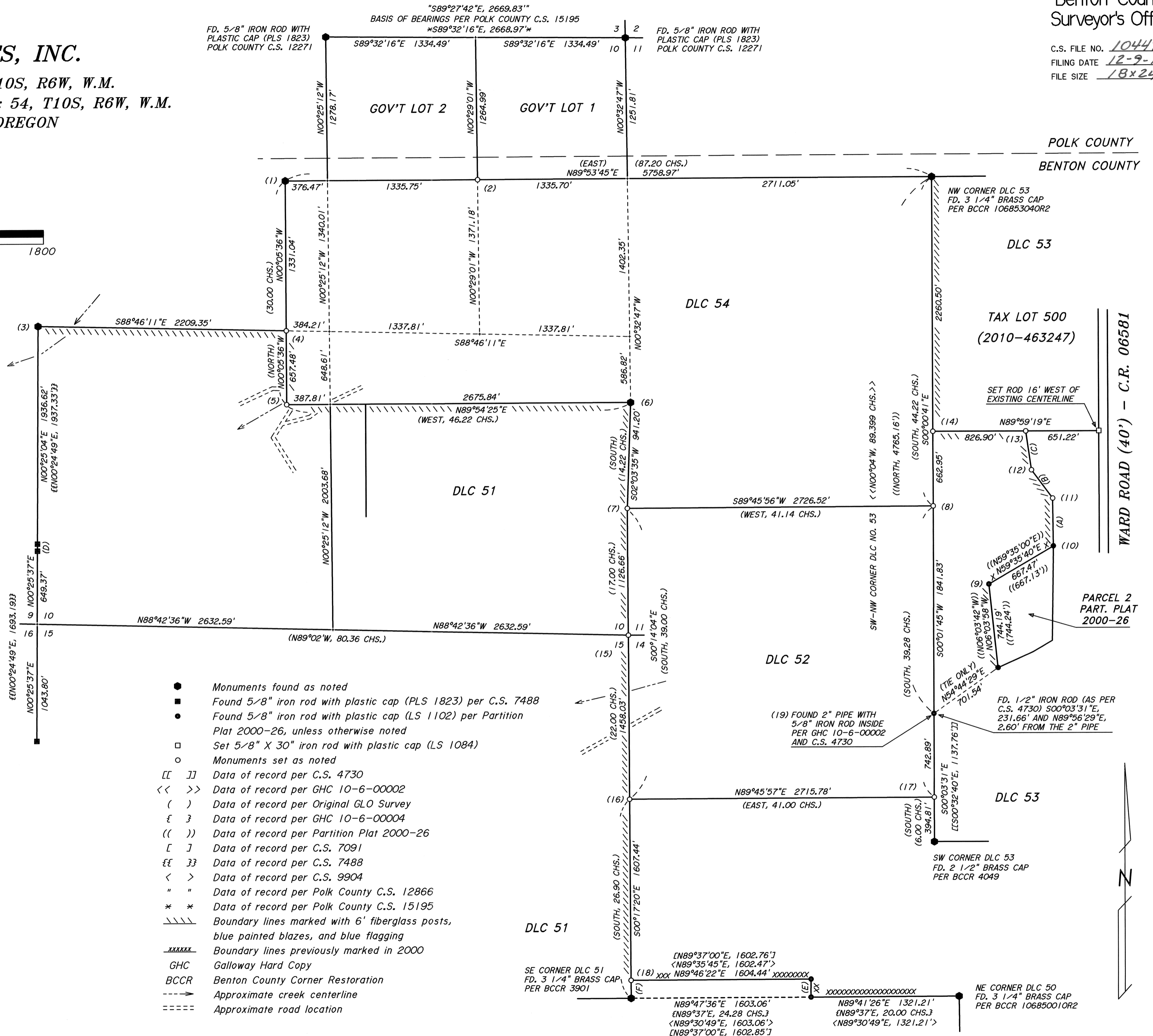


SURVEYED BY:
PETERSON & ASSOCIATES
8155 NW MITCHEL DRIVE
CORVALLIS, OREGON 97330
PHONE: 541-757-1794

REGISTERED
PROFESSIONAL
LAND SURVEYOR

OREGON
JULY 31, 1976
JIM S. PETERSON
1084
RENEWAL: 12-31-10

"S89°27'42"E, 2669.83"
BASIS OF BEARINGS PER POLK COUNTY C.S. 15195
S89°32'16"E, 2668.97
FD. 5/8" IRON ROD WITH PLASTIC CAP (PLS 1823) POLK COUNTY C.S. 12271



- (A) = N00°45'31"W 425.00'
- (B) = N36°36'36"W 313.27'
- (C) = N08°11'06"W 349.25'
- (D) = N00°30'29"E 62.72'
- ££N00°24'49"E, 62.82'££
- (E) = N00°12'13"E 160.10'
- <N00°01'36"E, 160.10'>
- [N00°02'00"W, 159.80']
- (F) = S00°17'20"E 159.52'

- Monuments found as noted
- Found 5/8" iron rod with plastic cap (PLS 1823) per C.S. 7488
- Found 5/8" iron rod with plastic cap (LS 1102) per Partition Plat 2000-26, unless otherwise noted
- Set 5/8" X 30" iron rod with plastic cap (LS 1084)
- Monuments set as noted
- [[]] Data of record per C.S. 4730
- << >> Data of record per GHC 10-6-00002
- () Data of record per Original GLO Survey
- £ £ Data of record per GHC 10-6-00004
- (()) Data of record per Partition Plat 2000-26
- [] Data of record per C.S. 7091
- ££ ££ Data of record per C.S. 7488
- < > Data of record per C.S. 9904
- " " Data of record per Polk County C.S. 12866
- * * Data of record per Polk County C.S. 15195
- Boundary lines marked with 6' fiberglass posts, blue painted blazes, and blue flagging
- Boundary lines previously marked in 2000
- GHC Galloway Hard Copy
- BCCR Benton County Corner Restoration
- - - - - Approximate creek centerline
- ==== Approximate road location

RECORD OF SURVEY

for **STARKER FORESTS, INC.**

in SECTIONS 10,11,14, & 15, T10S, R6W, W.M.
and in D.L.C. NO.'S 51,52,53, & 54, T10S, R6W, W.M.
BENTON & POLK COUNTIES, OREGON
MAY 28, 2010

(1) NORTHWEST CORNER DLC NO. 54

Found 12" X 12" stone in place per GLO survey. Stone has no marks visible.
We chiseled "+" in high point of stone and held for corner point.
BT's found:
20" Fir Stump, (S30°W, 116 lks.) Scribing visible - GLO
Line trees found:
70" Fir Stump, (East, 46 lks.) No marks visible
30" Fir Stump, (South, 2.46 chs.) No marks visible
Corner lies on West slope, in old dirt road fill, 3 feet below surface.
This corner will be further perpetuated by Benton County.

(2) SOUTHEAST CORNER GOV'T LOT 2 - SECTION 10

Set 1" X 30" iron pipe with plastic cap (LS 1084)
BT's set:
6" Fir, S55°E, 15.0 ft. Marked: "LOT 1 BT"
8" Fir, N10°E, 22.6 ft. Marked: "LOT 1 BT"
Corner lies 10 feet NE of gravel road and N70°W, 1.9 feet from
an old oak fence corner post.

(3) 1/4 CORNER SECTIONS 9 & 10

Found 5/8" iron rod with plastic cap (PLS 1823) per C.S. 7488
BT's found:
63" Fir Stump, (S19°W, 95.7 ft.) Scribing visible - GLO
48" Fir Stump, (N86 3/4°W, 70.0 ft.) Chopped face
18" Fir, (N34 1/4°E, 14.5 ft.) Healed face
20" Fir, (N38 3/4°W, 11.3 ft.) Healed face
Found leaf spring, (S51°E, 1.50') - Unknown origin
Corner lies on South slope, 2' North of old down East-West fence.

(4) SOUTHEAST CORNER GOV'T LOT 4 - SECTION 10

Set 1" X 30" iron pipe with plastic cap (LS 1084)
BT's set:
20" Fir, S62°E, 33.5 ft. Marked: "X" "BT"
18" Fir, N20°W, 39.0 ft. Marked: "LOT 4 BT"
Corner lies on Southeast slope.

(5) SOUTHWEST CORNER DLC NO. 54

Set 1" X 30" iron pipe with plastic cap (LS 1084) (SEE NARRATIVE)
BT's set:
16" Fir, N60°E, 63.4 ft. Marked: "DLC 54 BT"
16" Fir, S78°E, 54.1 ft. Marked: "DLC 54 BT"
36" W. Fir, S10°W, 59.9 ft. Marked: "DLC 54 BT"
24" Fir, N61°W, 123.8 ft. Marked: "DLC 54 BT"
Corner lies 10' South of creek, 75' West and 125' South of a
gravel road, and at the edge of wide swampy creek channel.

(6) NORTHEAST CORNER DLC NO. 51

Found 3/4" iron rod - unknown origin
BT's found:
60" Fir Stump, (N88°W, 123 lks.) Scribing visible - GLO
50" Fir Stump, (N01°W, 154 lks.) No marks visible - GLO
Corner lies in old North-South fence, 60' South of dirt road.
This corner will be remonumented by Benton County.

(7) NORTHWEST CORNER DLC NO. 52

Set 1" X 30" iron pipe with plastic cap (LS 1084) (SEE NARRATIVE)
BT's set:
6" Fir, N85°E, 34.7 ft. Marked: "DLC 52 BT"
8" Fir, N30°E, 12.7 ft. Marked: "DLC 52 BT"
4" Fir, N33°W, 12.6 ft. Marked: "X" "BT"
4" Fir, S31°E, 17.0 ft. Marked: "X" "BT"
Corner lies on Southwest slope, in old down fence line, and
8' West of standing North-South fence.

(8) NORTHEAST CORNER DLC NO. 52

Set 5/8" X 30" iron rod with plastic cap (LS 1084) at distance-
distance intersection from face of found original BT's.
BT's found:
30" Oak Shell, S26°E, 102.3 ft. (S25°E, 155 lks.) Rotted face - GLO
26" Rotted Oak Stub, S25°W, 82.5 ft. (S28°W, 125 lks.) No marks visible - GLO
Corner lies on Northeast slope. This corner will be remonumented by Benton County.

(9) ANGLE POINT NO. 2 - SECTION 11

Found 5/8" iron rod with plastic cap (LS 1102) - Part. Plat 2000-26
BT's found:
10" Pine, (N59°E, 2.1 ft.) Scribing visible
Corner lies on South slope.

(10) ANGLE POINT NO. 1 - SECTION 11

Found 5/8" iron rod with plastic cap (LS 1102) - Part. Plat 2000-26
BT's found:
12" Fir, (N62°W, 13.7 ft.) Healed face
Corner lies on Southeast slope in North-South fenceline.

(11) ANGLE POINT NO. 3 - SECTION 11

Set 5/8" X 30" iron rod with plastic cap (LS 1084)
BT's set:
16" Fir, S10°W, 16.2 ft. Marked: "AP3 S11 BT"
Corner lies on gentle Northeast slope.

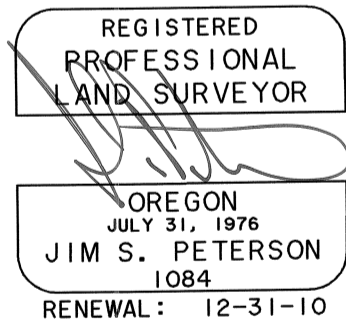
(12) ANGLE POINT NO. 4 - SECTION 11

Set 5/8" X 30" iron rod with plastic cap (LS 1084)
BT's set:
14" Fir, S09°E, 7.0 ft. Marked: "AP4 S11 BT"
Corner lies on gentle Northeast slope.

(13) ANGLE POINT NO. 5 - SECTION 11

Set 1" X 30" iron pipe with plastic cap (LS 1084)
BT's set:
12" Fir, S80°E, 9.1 ft. Marked: "AP5 S11 BT"
16" Fir, S30°W, 10.5 ft. Marked: "AP5 S11 BT"
Corner lies on gentle East slope, in old North-South fence,
and 6' South of fence corner.

SURVEYED BY:
PETERSON & ASSOCIATES
8155 NW MITCHEL DRIVE
CORVALLIS, OREGON 97330
PHONE: 541-757-1794



RECORD OF SURVEY

for **STARKER FORESTS, INC.**

in SECTIONS 10,11,14, & 15, T10S, R6W, W.M.
and in D.L.C. NO.'S 51,52,53, & 54, T10S, R6W, W.M.
BENTON & POLK COUNTIES, OREGON
MAY 28, 2010

NARRATIVE

The purpose of this survey is to monument and mark a portion of the boundaries of the Starker Forests, Inc. property as described by Document No. M296733-01 of the Benton County Deed Records.

We recovered the original NW corner of DLC 54, the original NE corner of DLC 52, and the original SW corner of DLC 52. We found a 3/4" iron rod (of unknown origin) at the NE corner of DLC 51. This rod fits very well with both original BT's, and was therefore accepted as the true corner point.

We did not recover the WSW corner of DLC 54, or the NNW corner of DLC 51. We reestablished the WSW corner of DLC 54 by grant boundary method.

The SW corner of Section 10 appears to have been searched for, but not recovered, by C.S. 293 in 1912. The field notes of that survey show that the line from the 1/4 corner of Sections 9 and 10 to the 1/4 corner of Sections 15 and 16 had been retraced. Said survey held the line between the 1/4 corners as the true Section line and completed their survey. C.S. 7488 and C.S. 7510 also held the same line as the true Section line, with C.S. 7510 retracing the lines of C.S. 293. Since the Section line has been held as being the line between the above noted 1/4 corners for almost 100 years, I feel I should continue that procedure rather than disrupt established property lines. Therefore, rather than reestablish the SW corner of Section 10 by double proportion, I have reestablished it by single proportion between the above noted 1/4 corners based on monuments found as set by C.S. 7488. (We also searched for the original Section corner, but found no evidence. The reestablished position does fit the creek call to the North very well.)

We did not recover the SE corner of DLC 52. We considered reestablishing said corner using a grant boundary procedure. However, G.H.C. 10-6-00002 set a 2" pipe at point (19), on line between the NE corner of DLC 54 and the SW corner of DLC 53. In order to not disrupt the property lines established during that survey, and more recent surveys, we have reestablished the SE corner of DLC by single proportion between the SW corner of DLC 53 and the NE corner of DLC 52. Even though G.H.C. 10-6-00002 did not have the NE corner of DLC 52 to control line, said NE corner is only 0.2 feet off that line. We therefore held the 2" iron pipe at point (19) as an angle point along the East line of DLC 52.

We considered reestablishing the NW corner of DLC 52 by single proportion between the NE corner of DLC 51 and the SW corner of DLC 52, which both fall in existing N-S fence lines. However, a straight line between these two corners would fall about 20 feet east of an old fence line at a point 560 feet South of the NE corner of DLC 51. In order to evaluate the existing occupation lines we tied the existing fence lines between the NE corner of DLC 51 and the SW corner of DLC 52. The fence line is consistently West of a straight line between these corners, with a nearly two degree angle break in the area of the NW corner of DLC 52 (S02°W from the NE corner of DLC 51 to the NW corner of DLC 52, then due South to the SW corner of DLC 52). The standing fence line from the NE corner of DLC 51 going South for 560 feet appears to be older than the rest of the fence line continuing South. There are remnants of an older fence line continuing South from the above noted point which is 560 feet South of the NE corner of DLC 51, which is a few feet West of the standing fence line. Portions of the fence remnants are down and difficult to verify exactly where they originally stood, but there are some areas where we can see the fence had been nailed to trees a few feet West of the standing fence line. There being old fence lines, with a definite angle break near where the original NW corner of DLC 52 would be, indicates that the original corner position was probably known at the time the fence was built. We therefore looked at reestablishing the NW corner of DLC 52 using a grant boundary method, rather than a single proportion. When we do a grant boundary computation using the NE and SW corners of DLC 52 the computed position falls about 8 feet West of the standing fence line, but it appears to be very near to the older fence line. It is therefore our conclusion that the original corner position was know when the older fence was built, and that a grant boundary adjustment fits that position best. We have monumented the grant boundary position as the NW corner of DLC 52.

The original SE corner of Section 10 was a charred stake with pits and mounds, which we did not recover. The original survey of the West line of DLC 52 calls for that line to be along the East line of Section 10. That survey also called a distance from the NW corner of DLC 52 to the SE corner of Section 10. We therefore single proportioned the SE corner of Section 10 between the NW and SW corners of DLC 52, based on data from the original survey of that Claim, which is the most recent retracement of the East line of Section 10.

We searched for, but did not recover the original 1/4 corner of Sections 10 and 15. We therefore computed the position for that corner at mid-point between the SW and SE corners of Section 10 as noted above.

The 5/8" iron rod set by C.S. 7091 at corner No. (18) was set on a record bearing of "North" from the SE corner of DLC 51. We set a pipe on line between the SE corner of DLC 51 and the SW corner of DLC 52 for the true corner, which is about 2 feet West of the iron rod.

We searched for, but did not recover the original 1/4 corner of Sections 10 and 11. The original survey for DLC 51 set the NE DLC corner coming from the West where they "intersect the line between Sections 10 and 11", then runs "South on the Section line". This indicates the NE corner of DLC 51 was set on the East line of Section 10, and we have held it as an angle point on said East line. We then proportioned the 1/4 corner of Sections 10 and 11 at mid-point in Northing between the NE and SE corners of Section 10, and on line between the NE corner of DLC 51 and the NE corner of Section 10.

Tract C of Document No. M296733-01 of the Benton County Deed Records calls for "Parcel 1, Partition Plat No. 2000-26" to be conveyed to Starker Forests, Inc. Said Parcel 1 includes Parcel 1 of Document No. M-74116 of the Benton County Deed Records, except that portion "lying Easterly of an existing fence that is described in the Deed recorded as M-288502-00" of the Benton County Deed Records. M-288502-00 is a conveyance to Theodore E. and Leonor G. Leonard of "That portion of the land described as Parcel 1 of the Deed recorded as M-74116, Benton County Microfilm Records, lying easterly of an existing fence, and the northerly straight extension of said fence". Said fence is further described by M-288502-00 as follows: "The location of said existing fence is more particularly described as follows: Beginning at a 5/8" iron rod in said fence (the Northeast corner of Parcel 2 of said Partition Plat); thence North 00°49'24" East, along said existing fence, and the straight extension thereof, 675 feet to the East (North) line of the said land described as Parcel 1 of the Deed recorded as M-74116, Benton County Microfilm Records."

The Northeast corner of Parcel 2 of Partition Plat No. 2000-26 does lie in an existing North-South fence. From that point the fence follows courses (A), (B), and (C) as shown on the attached map. M-288502-00 calls along the existing fence, and also calls for the straight Northerly extension of that fence. These two calls are in conflict with each other in that the existing fence does not continue straight North. However, I feel that the intent of the deed is to follow the existing fence Northerly to the North line of Parcel 1 of M-74116. We have monumented and marked that fence as the true boundary of M-288502-00.

Monuments found as per the original GLO surveys, G.H.C. 10-6-00002, G.H.C. 10-6-00004, C.S. 293, C.S. 4730, C.S. 7091, C.S. 7488, C.S. 8424, Benton County Partition Plat No. 2000-26, BCCR 3901, BCCR 4049, BCCR 106850010R2, and BCCR 106853040R2 were held as control for this survey.

All survey reference numbers shown on this survey are from the Benton County Surveyor's Office, except as noted.

(14) ANGLE POINT NO. 6 - SECTION 11

Set 1" X 30" iron pipe with plastic cap (LS 1084)
BT's set:
12" Fir, S43°W, 36.5 ft. Marked: "AP6 S11 BT"
8" Fir, N63°W, 30.3 ft. Marked: "AP6 S11 BT"
Corner lies 10' East of dirt road.

(15) SOUTHEAST CORNER SECTION 10

Set 1" X 30" iron pipe with plastic cap (LS 1084) (SEE NARRATIVE)
BT's set:
8" Fir, N52°E, 28.1 ft. Marked: "T10S R6W S11 BT"
10" Fir, S43°E, 30.4 ft. Marked: "T10S R6W S14 BT"
12" Fir, N19°W, 33.9 ft. Marked: "T10S R6W S10 BT"
30" Fir, S16°W, 5.8 ft. Marked: "T10S R6W S15 BT"
Corner lies on SW slope, 5.5' West of fence and 40' East of creek.

(16) SOUTHWEST CORNER DLC NO. 52

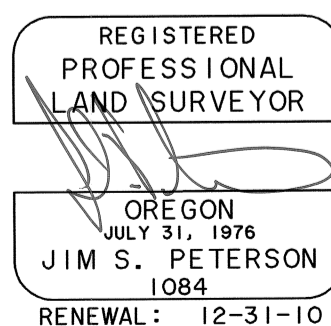
Set 6" spike with brass washer in base of 24" Fir (Girdled Fir tree)
BT's found:
50" Oak Stump (Hollow), S03°E, 85.80 ft. (130 lbs.) to face - GLO
Corner lies on gentle West slope in old down North-South fence.
This corner to be remonumented by Benton County. (SEE NARRATIVE)

(17) SOUTHEAST CORNER DLC NO. 52

Set 1" X 30" iron pipe with plastic cap (LS 1084) (SEE NARRATIVE)
References set:
12" Fir, N22°W, 27.0 ft. Marked: "DLC 52 BT"
6" Fir, S23°W, 11.0 ft. Marked: "X" "BT"
5/8" X 30" iron rod with plastic cap (LS 1084), S37°42'E, 9.90'
5/8" X 30" iron rod with plastic cap (LS 1084), N46°25'E, 9.93'
Corner lies on Northeast slope, in old down North-South fence,
and 6 feet South of intersection of fence to West.

(18) ANGLE POINT NO. 1 - SECTION 14

Set 1" X 30" iron pipe with plastic cap (LS 1084) (SEE NARRATIVE)
BT's found: (Previously referred to found rod)
24" Fir, N70°E, 35.8 ft. Healed face
BT's set:
10" Maple, S87°W, 26.6 ft. Marked: "API S15 BT"
Found 5/8" iron rod (C.S. 7091), N89°46'22"E, 1.97'
Corner lies on South slope, 4 feet West of North-South fence.



SURVEYED BY:
PETERSON & ASSOCIATES
8155 NW MITCHEL DRIVE
CORVALLIS, OREGON 97330
PHONE: 541-757-1794