

DRAWING NUMBER
10459
SAFCO PRODUCTS • NEW HOPE, MINNESOTA
REORDER BY PART NUMBER 6552

DRAWING NUMBER

DRAWING NUMBER

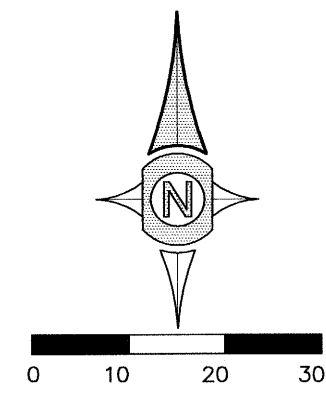
DRAWING NUMBER
10459
SAFCO PRODUCTS • NEW HOPE, MINNESOTA
REORDER BY PART NUMBER 6552

SURVEY FOR
OREGON STATE UNIVERSITY

LOTS 1 AND 2, BLOCK 14, N.B. AVERY AND P AVERY ADDITIONS TO CORVALLIS
IN THE NW 1/4 OF SEC. 2, T.12S., R.5W., WILLAMETTE MERIDIAN,
CITY OF CORVALLIS, BENTON COUNTY, OREGON
SURVEYED: NOVEMBER 4, 2010

**Benton County
Surveyor's Office**

C.S. FILE NO 10459
FILING DATE 1-24-11
FILE SIZE 18x24

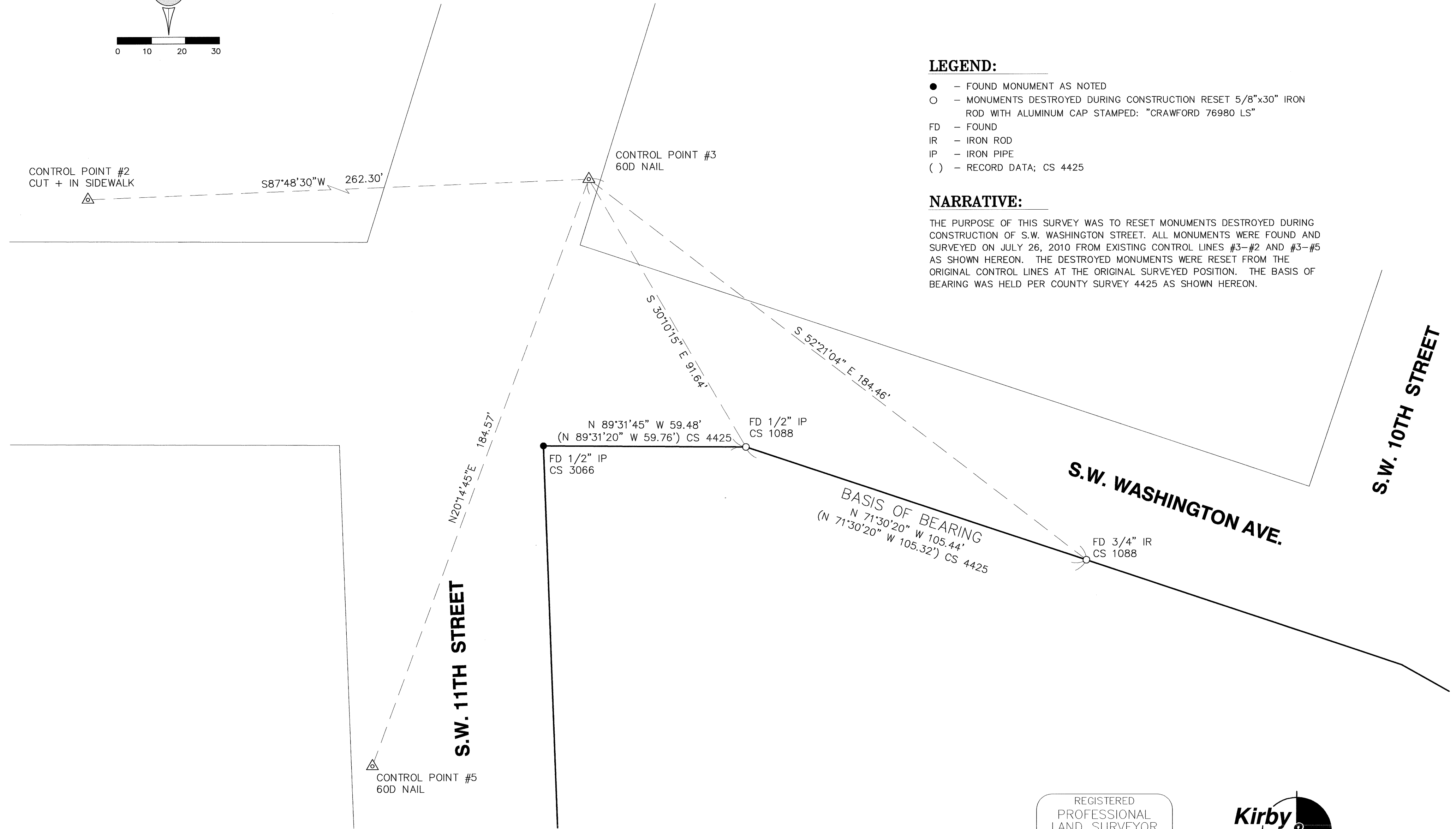


LEGEND:

- - FOUND MONUMENT AS NOTED
- - MONUMENTS DESTROYED DURING CONSTRUCTION RESET 5/8"x30" IRON ROD WITH ALUMINUM CAP STAMPED: "CRAWFORD 76980 LS"
- FD - FOUND
- IR - IRON ROD
- IP - IRON PIPE
- () - RECORD DATA; CS 4425

NARRATIVE:

THE PURPOSE OF THIS SURVEY WAS TO RESET MONUMENTS DESTROYED DURING CONSTRUCTION OF S.W. WASHINGTON STREET. ALL MONUMENTS WERE FOUND AND SURVEYED ON JULY 26, 2010 FROM EXISTING CONTROL LINES #3-#2 AND #3-#5 AS SHOWN HEREON. THE DESTROYED MONUMENTS WERE RESET FROM THE ORIGINAL CONTROL LINES AT THE ORIGINAL SURVEYED POSITION. THE BASIS OF BEARING WAS HELD PER COUNTY SURVEY 4425 AS SHOWN HEREON.



REGISTERED
PROFESSIONAL
LAND SURVEYOR
D. M. Crawford
OREGON
JAN. 9, 2007
DERON M. CRAWFORD
#76980 LS
EXPIRES: 12-31-2011



ENGINEERING AND LAND SURVEYING
1055 AIRWAY ROAD, SUITE C102
PO BOX 2385, LEBANON, OREGON 97355
PH: (541) 258-8833 FAX: (541) 258-8834
PAGE 1 OF 1 JOB: 09-04-027