

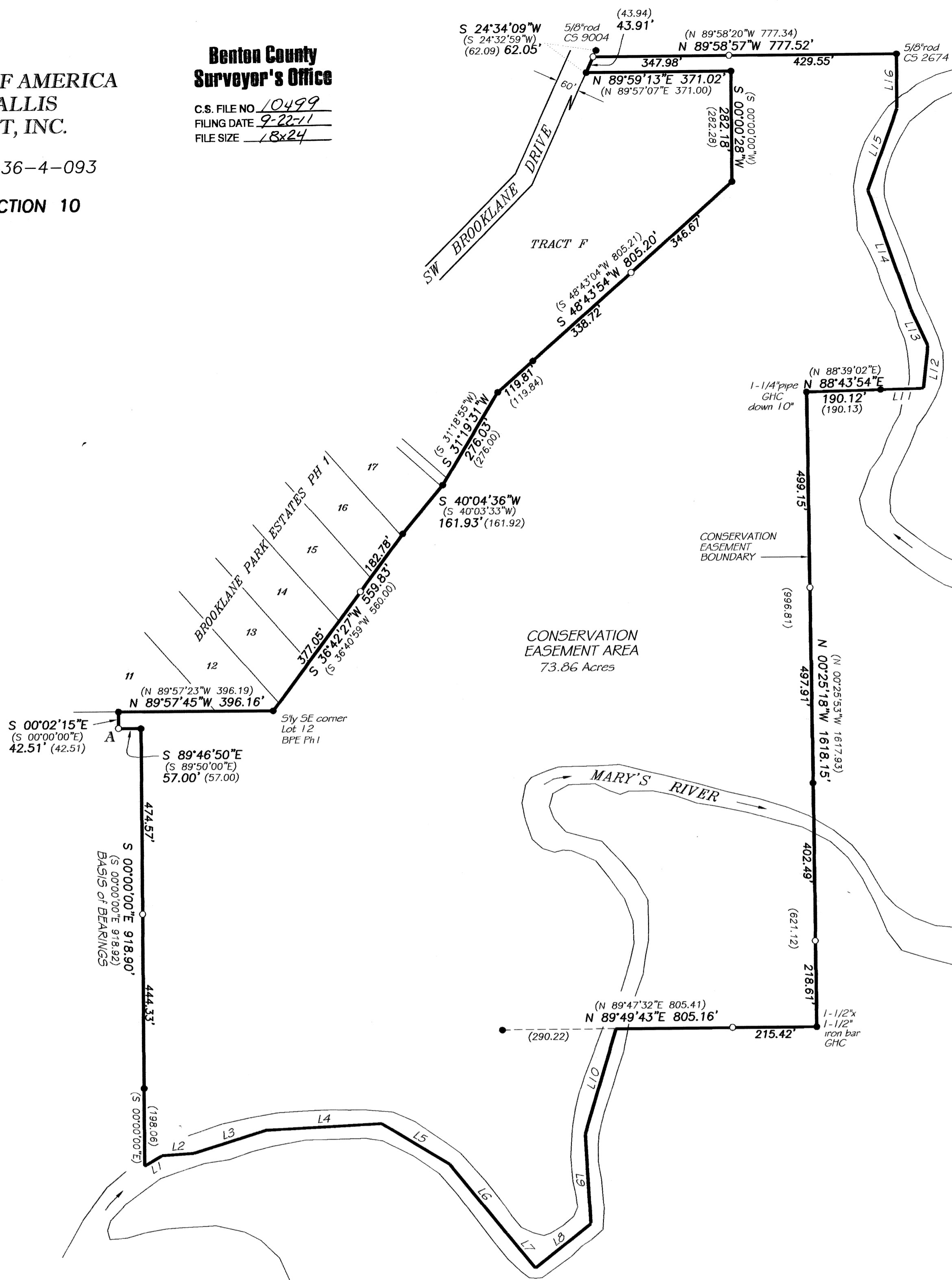
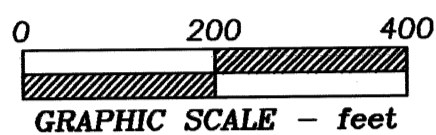
**RECORD of SURVEY**  
for  
**THE UNITED STATES OF AMERICA**  
and **THE CITY OF CORVALLIS**  
and **KLEINFELDER WEST, INC.**

**Benton County**  
**Surveyor's Office**

C.S. FILE NO. 10499  
FILING DATE 9-22-11  
FILE SIZE 18x24

WRP EASEMENT NO. 66-0436-4-093  
in  
NW 1/4 & SW 1/4 of SECTION 10  
T 12 S, R 5 W, W.M.  
CITY OF CORVALLIS  
BENTON COUNTY, OREGON

JUNE 14, 2011



**RIVER CENTERLINE COURSES**

Course	Bearing & Distance
L1	(N 59°52'37\"
L2	(N 85°54'33\"
L3	(N 72°48'00\"
L4	(N 87°03'54\"
L5	(S 58°54'45\"
L6	(S 39°09'12\"
L7	(S 39°37'05\"
L8	(N 51°25'24\"
L9	(N 03°12'31\"
L10	(N 16°45'13\"
L11	(N 88°43'54\"
L12	(N 06°27'26\"
L13	(N 24°51'26\"
L14	(N 19°24'41\"
L15	(N 20°10'08\"
L16	(N 00°00'00\"

**LEGEND**

- .....Found survey monument - 5/8" iron rod with yellow cap stamped "SEADERS 1014" set per CS 9004, CS 9012, CS 9015 or CS 9102 unless otherwise noted.
- .....Set monument - 5/8"x 30" rebar with red plastic cap stamped "NORTHSTAR SURVEYING"
- ( ).....Record data from CS 9102.
- GHC.....Galloway Hardcopy #12-5-00012.
- BPE Ph1...Brooklane Park Estates Phase 1

NOTE: pipe dimension is inside diameter

**NARRATIVE**

The purpose of this survey was to relocate monuments defining the Wetland Reserve Program Easement (66-0436-4-093) that were found or set in 1996 per CS 9102. Additional monuments were set on lines where the distance between existing monuments exceeded 500 feet. A Steel "U" post with a "Conservation Easement Boundary" sign was set at each corner and line monument.  
The Northwest corner of the Easement falls at the north edge of a gravel drive/parking area. The monument by CS 9102 at this position and the monument by CS 2674 37.52 feet West of it have both been destroyed. I computed the position by proportionate measure (compared to CS 9102 data) between the found monuments NE and SW of it.  
The monument by CS 9015 at "A" was also missing. I computed the position by distance - distance intersection (data from CS 9102) from the monuments to the North and East.

REGISTERED  
PROFESSIONAL  
LAND SURVEYOR

*Theodore James Langton*

OREGON  
JULY 13, 1979  
THEODORE JAMES LANGTON  
1823

RENEWS: 12/31/2012

**NORTHSTAR SURVEYING, INC.**  
720 N.W. 4th Street  
Corvallis, Oregon 97330  
Phone: 541-757-9050