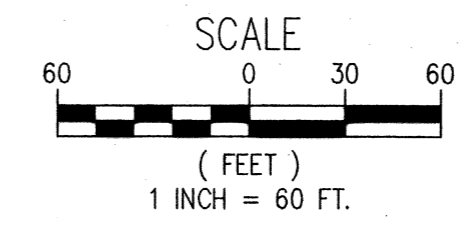


RECORD OF SURVEY FOR PROPERTY LINE ADJUSTMENT

LOCATED IN THE NORTHEAST QUARTER OF SECTION 26,
TOWNSHIP 11 SOUTH, RANGE 5 WEST,
CITY OF CORVALLIS, BENTON COUNTY, OREGON

DECEMBER 27, 2011

PREPARED FOR: HACIENDA 12625 HIGHBLUFF DR., LLC.
12625 HIGHBLUFF DR., SUITE 310
SAN DIEGO, CA. 92130



WHPacific

9755 SW Barnes Rd, Suite 300
Portland, OR 97225
503-626-0455 Fax 503-526-0775
www.whpacific.com

REGISTERED
PROFESSIONAL
LAND SURVEYOR

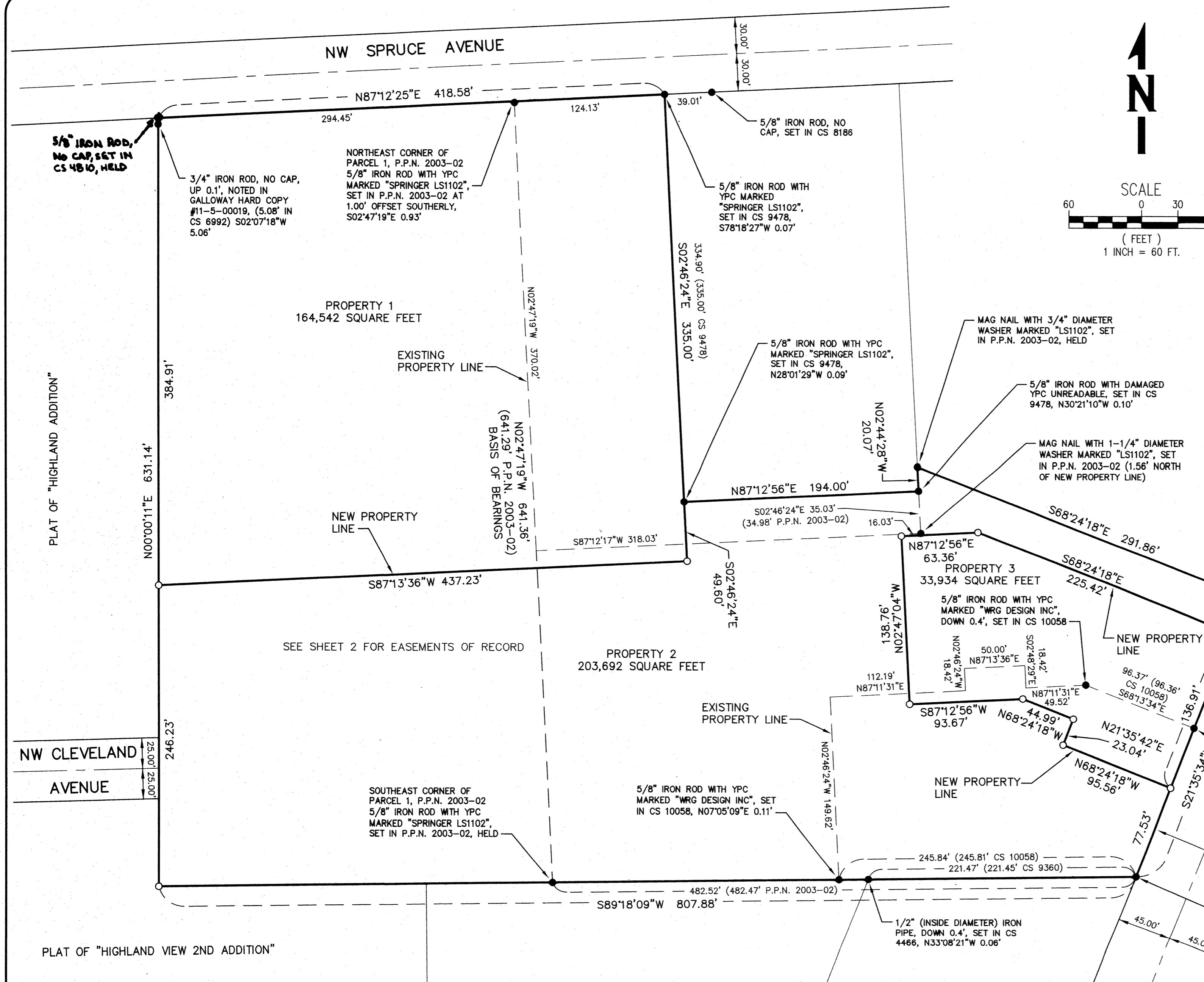
Scott M. Grubbs

OREGON
JULY 13, 2004
SCOTT M. GRUBBS
54728

RENEWAL: 06-30-13

**Benton County
Surveyor's Office**

C.S. FILED 10523
FILED DATE 1-31-12
FILE NO. 18-24



BASIS OF BEARINGS

THE BASIS OF BEARINGS FOR THIS SURVEY IS PER PARTITION PLAT NO. 2003-02, RECORDED IN THE BENTON COUNTY SURVEY RECORDS. THE BASIS OF BEARINGS IS BETWEEN THE FOUND (HELD EAST/WEST) MONUMENTS AT THE NORTHEAST AND SOUTHEAST CORNERS OF PARCEL 1, SAID PARTITION PLAT, AND SHOWN HEREON AS NORTH 02°47'19" WEST.

NOTE:

THIS SURVEY HAS BEEN PREPARED IN ACCORDANCE WITH THE CITY OF CORVALLIS, PROPERTY LINE ADJUSTMENT APPROVAL, CASE LLA11-00002 ORDER NO. 2011-049.

NARRATIVE

I, SCOTT M. GRUBBS, A REGISTERED PROFESSIONAL LAND SURVEYOR, HEREBY CERTIFY THAT THIS MAP REPRESENTS A SURVEY MADE BY ME AT THE REQUEST OF HACIENDA 12625 HIGHBLUFF, LLC.

THE PURPOSE OF THIS SURVEY IS TO MONUMENT A PROPERTY LINE ADJUSTMENT AS APPROVED BY THE CITY OF CORVALLIS COMMUNITY DEVELOPMENT PLANNING DIVISION.

THE NEW PROPERTY LINES WERE ESTABLISHED TO ACCOMMODATE FUTURE DEVELOPMENT FOR HACIENDA 12625 HIGHBLUFF, LLC. AND MONUMENTED AS SHOWN.

LEGEND

- FOUND MONUMENT AS NOTED
- SET MONUMENT 5/8" IRON ROD WITH YELLOW PLASTIC CAP MARKED "WHPACIFIC"
- P.P.N. PARTITION PLAT NUMBER
- YPC YELLOW PLASTIC CAP
- () BENTON COUNTY SURVEY RECORDS DATA

APPROVALS

APPROVED Kevin Young Jan. 11, 2012
CITY OF CORVALLIS PLANNING DIVISION MANAGER DATE

APPROVED Angela Paul 01-23-12
CITY OF CORVALLIS ENGINEER DATE

REFERENCE DATA

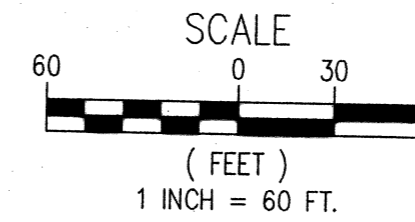
SURVEYS:
CS 4466; CS 6992; CS 8309;
CS 8186; CS 9360; CS 9478;
CS 10058
PARTITION PLAT NO. 2003-002

RECORD OF SURVEY FOR PROPERTY LINE ADJUSTMENT

LOCATED IN THE NORTHEAST QUARTER OF SECTION 26,
TOWNSHIP 11 SOUTH, RANGE 5 WEST,
CITY OF CORVALLIS, BENTON COUNTY, OREGON

DECEMBER 27, 2011

PREPARED FOR: HACIENDA 12625 HIGHBLUFF DR., LLC.
12625 HIGHBLUFF DR., SUITE 310
SAN DIEGO, CA. 92130



WHPacific

9755 SW Barnes Rd, Suite 300
Portland, OR 97225
503-626-0455 Fax 503-526-0775
www.whpacific.com

REGISTERED
PROFESSIONAL
LAND SURVEYOR

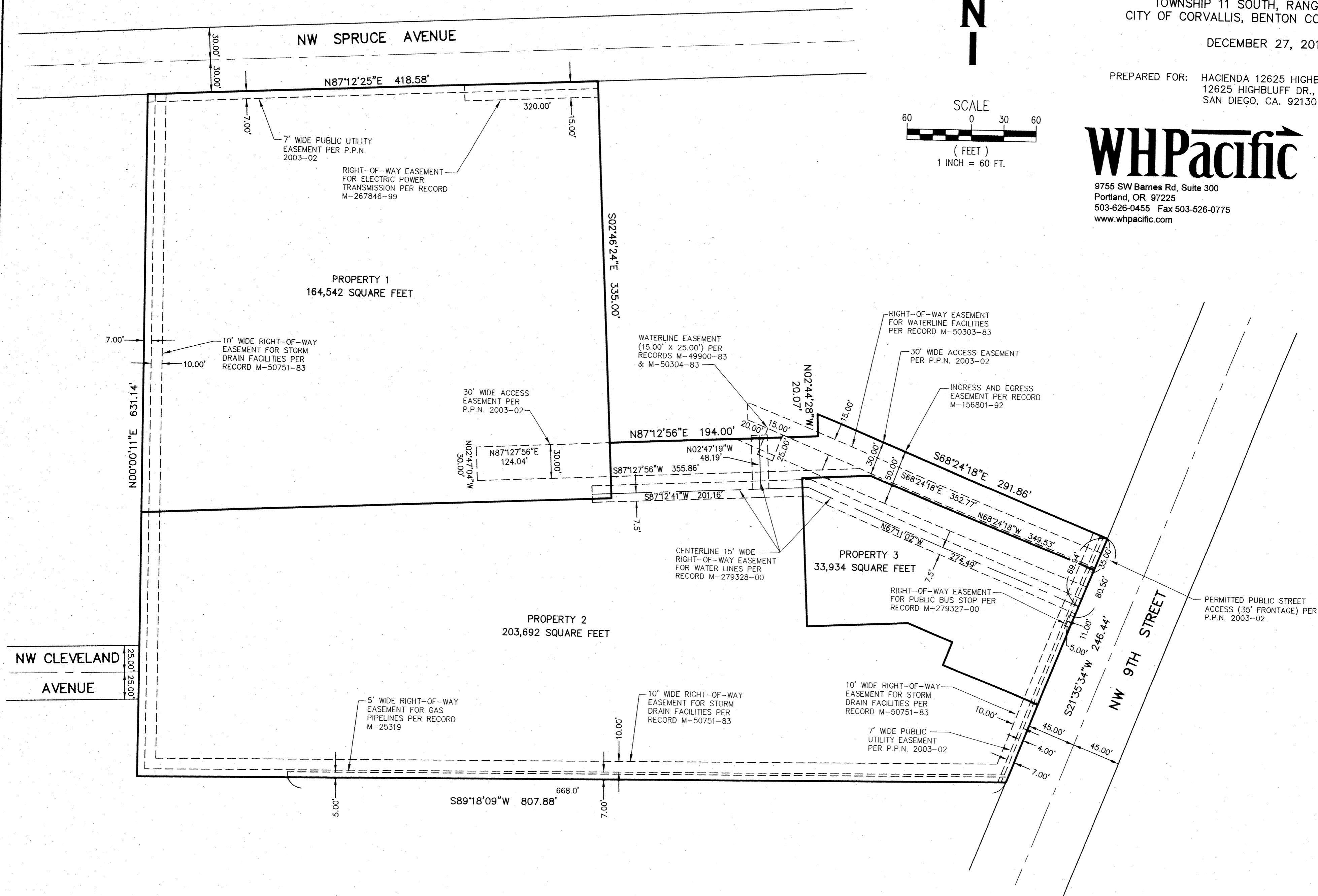
Scott M. Grubbs

OREGON
JULY 13, 2004
SCOTT M. GRUBBS
54728

RENEWAL: 06-30-13

**Benton County
Surveyor's Office**

CG FILE NO. 12523
FIELD DATE 1-31-12
FILE NO. 18x84



NW CLEVELAND
AVENUE

NW 9TH STREET

NW SPRUCE AVENUE

PROPERTY 1
164,542 SQUARE FEET

PROPERTY 2
203,692 SQUARE FEET

PROPERTY 3
33,934 SQUARE FEET

PERMITTED PUBLIC STREET
ACCESS (35' FRONTAGE) PER
P.P.N. 2003-02