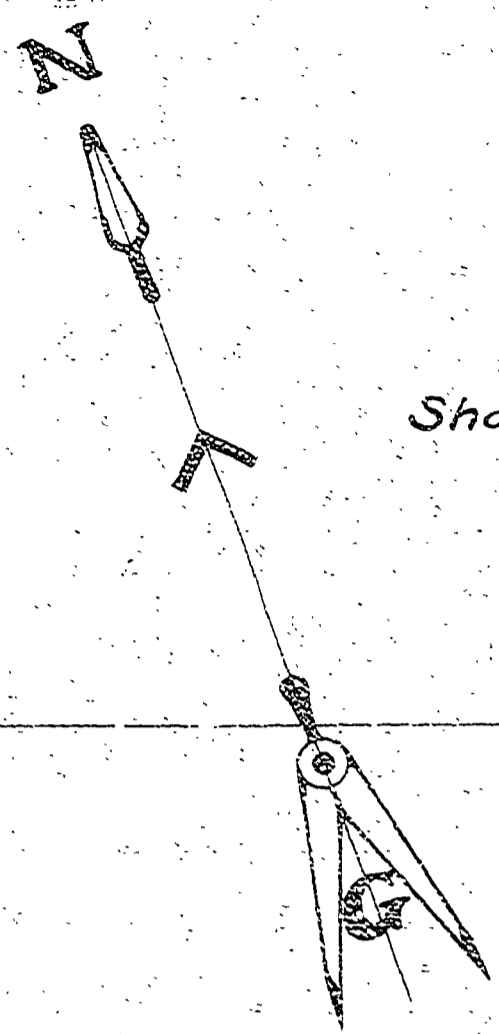


CS 137  
 - PLAT OF -  
 MASONIC BLOCK  
 CORVALLIS, BENTON CO., ORE.

Showing present surface elevations and Grades for walks.  
 ~ Scale 1"=10' ~

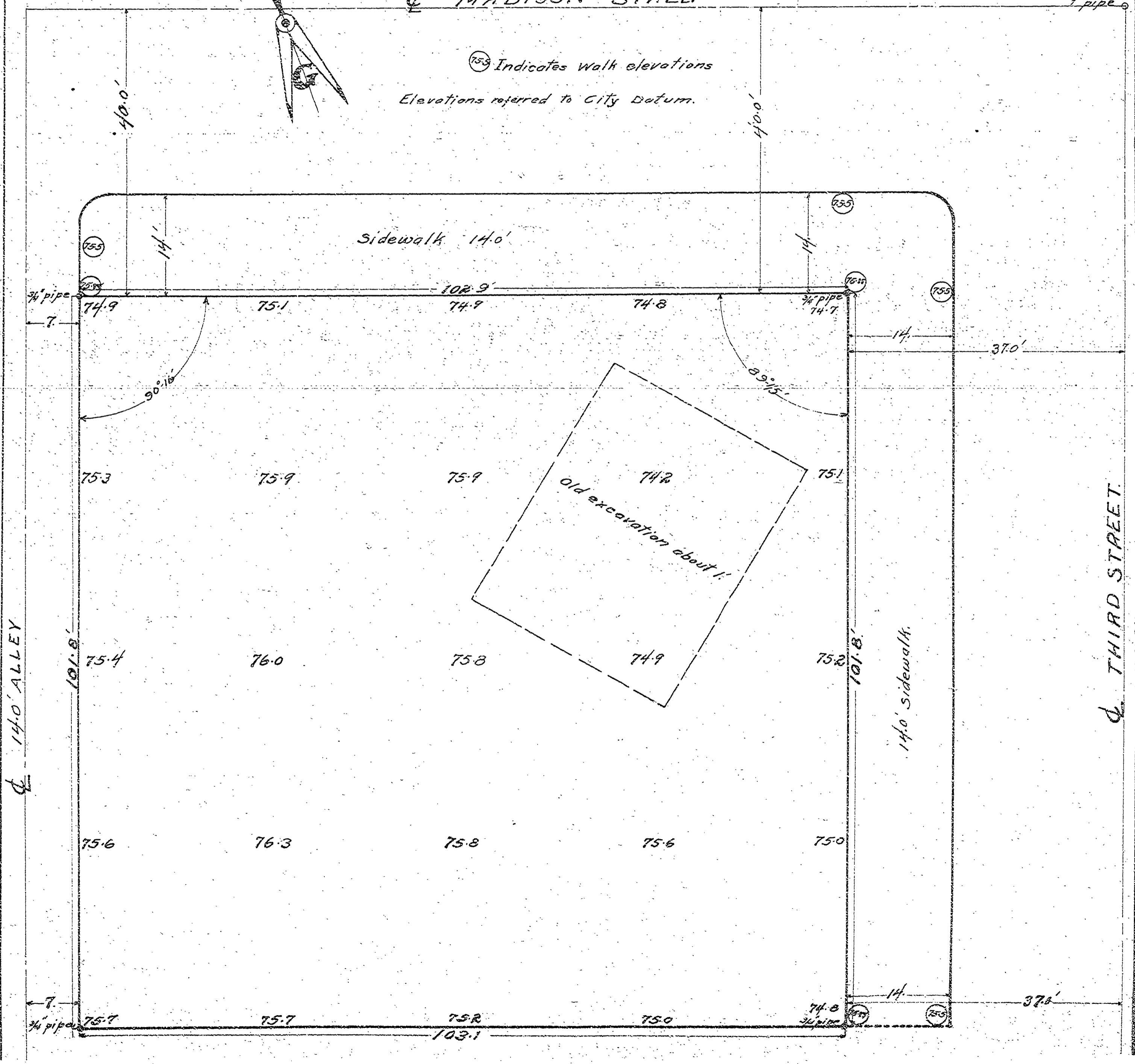
April 8, 1911 - F. Marion Wilkes  
 County Engr.



☿ MADISON STREET

1" pipe

⊙ Indicates walk elevations  
 Elevations referred to City Datum.



☿ 140' ALLEY

☿ THIRD STREET