

2366-A

2366-A

COUNTY SURVEY NO. 2366-A SEE ALSO 2366

CHARLES D. WHITESIDE

JOHN TRAPP D.L.G. NO. 38, T.12 S., R. 5 W., WILL. MER.

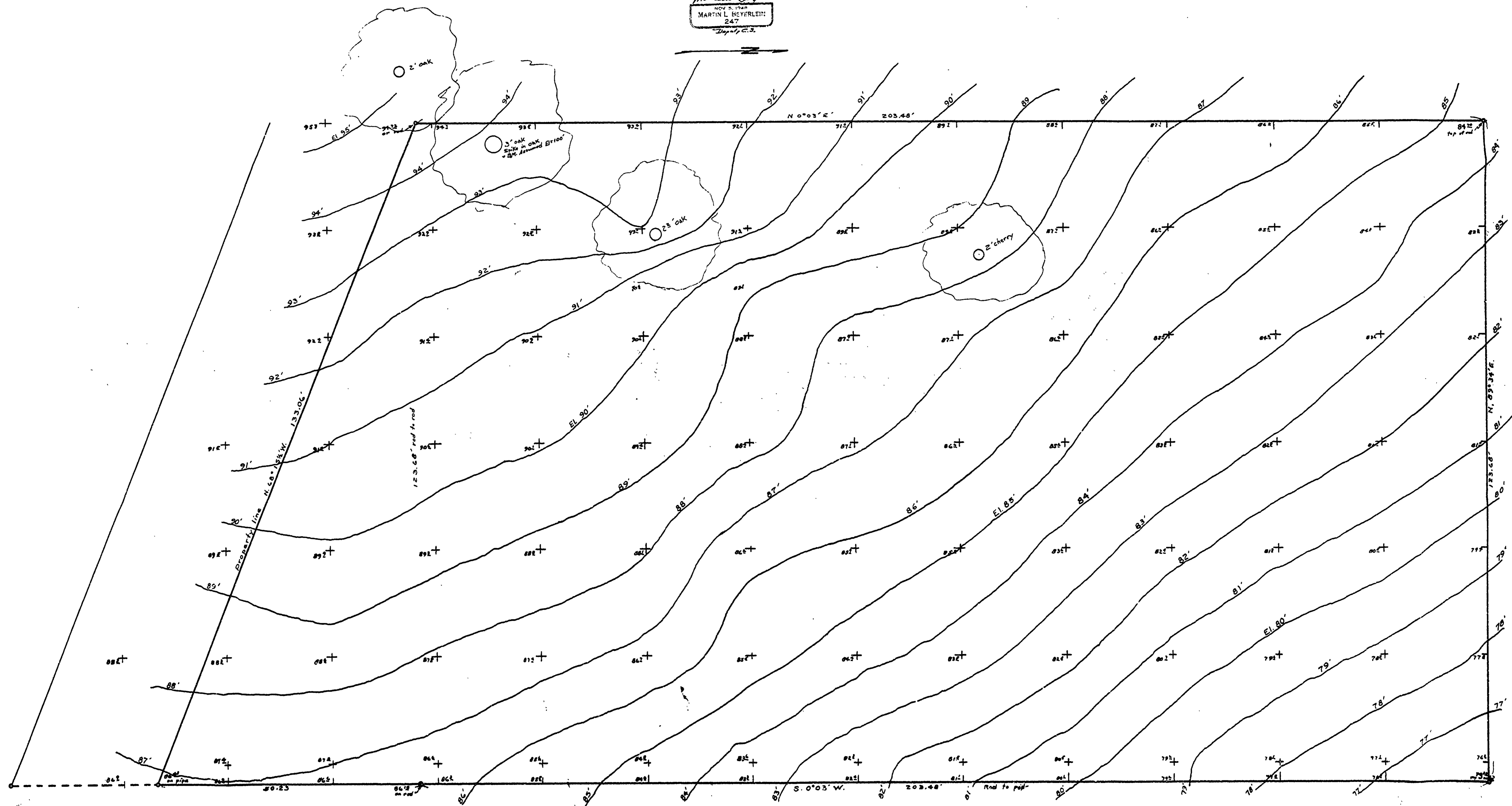
Scale: vertical 1 ft. contours horizontal 1" = 8'

Feb. 2, 1953

REGISTERED  
 OREGON  
 LAND SURVEYOR

*Martin L. Scherlein*

NOV 8 1948  
 MARTIN L. SCHERLEIN  
 247  
 Deputy C.S.



Cont. Survey No. 2366-A