

2309

CHAS. L. WILLEY

PRIER SCOTT D.L.C. No. 44, T. 12 S., R. 5 W., W. M.

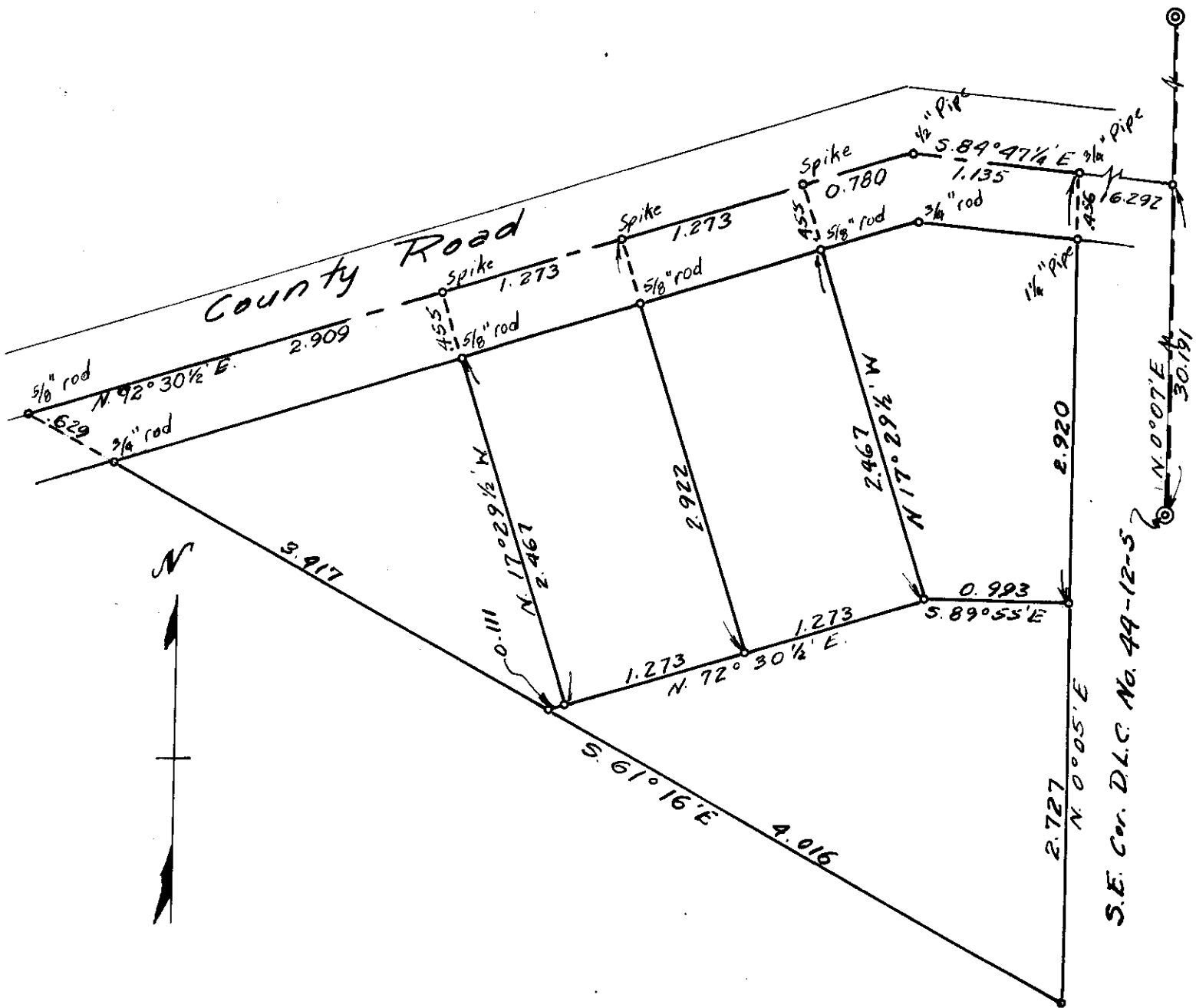
Scale: 1" = 1 chain

April 1, 1952

REGISTERED
OREGON
LAND SURVEYOR

Curtis C. Hanson

NOVEMBER 9, 1945
CURTIS C. HANSON
161



S.E. Cor. D.L.C. No. 44-12-5