

36  
Recessed  
Survey #122 #271  
Beginning at the S.W. cor. of  
James H. Stewart D.L.C. #49  
Tp. 11-4.

Set 1 1/4" pipe. Set from Oak stamp  
Double service 10" N. 77°30' E. 130 ch.  
" 8" S 49°30' W. 426 "  
(Easterly)

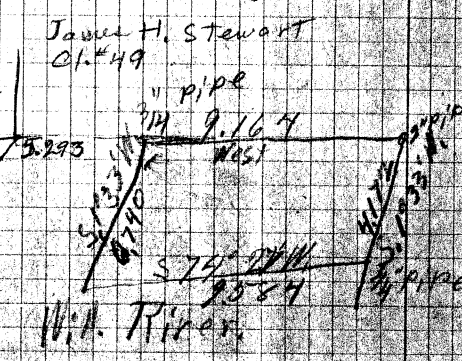
1 13.997  
2 7.460 to 2 1/4" pipe  
N. 114  
3 3.662 offset  
4 10.202 offset  
5 5.392 offset  
6 .083 striking south of cor.  
Set 3/4" pipe 46" long.  
Mopie 12" N. 73°30' W. 394 chs.  
Fir. 30" N. 11°30' W. 14 x std.

Backs to  $\Delta$   
S. 1°33' W.  
E. 45°  
N. 128  
4.081  
- .037 3/4" pipe  
5.048

P. F. Thompson  
W.S. Phillips

3662 3062 10.202  
83999 9153 925  
32958 10986 51610  
32955 1831 2040  
329 32 408  
10 2  
2 12885 053458  
3.6594  
5392  
611  
5392  
539  
323

offsets.  
129  
.053  
.006  
.083  
1.0081528  
271.000  
206.00  
50.00  
33.25  
16.750



#271  
139942  
34595  
102025  
278598  
5.392  
33,2504

13997  
1162  
14457  
9168  
5.29, 30.051  
128  
4.209  
0.937  
4.172

13.997  
9.164  
4.833  
.46  
5.293

James H. Stewart  
D.L. #49

W.A. Piper