

11-5
22-27

00010

C.S. 290 T. 11 S. R. 5 W.

Scale: - 1 in = 10 chs.

May 20 for M.S. Woodcock

21

22

THIS LINE IS OFF (MORTGAGE)

James L. Mulkey Jr. 65

D. B. Mulkey Cl. 64

25.194 1st cor. 58° 30' 57"
25.252 To Cl. Cor.

2 1/2" Pipe 22.635

N 89° 57' E

188.70 ac

Stone Removed Stone and set a 1/2" pipe and mound of stone

see C.S. file 290 O.M.M. 7 Nov. 1946

15.25 ac Subdivision of this piece filed in C.S. #290 June 28 1947

see C.S. file 290 O.M.M. 7 Nov. 1946

D = 284 2R = 204.6
Δ = 89° 39'
T = 203.4 (Partial deed)
E = 83.89
E = 220.18

John D. Mulkey Cl. 63

James L. Mulkey Jr. Cl. 63

28

27

45.715
4/1

1' Iron rod

N 89° 04' W

S.M. Stout's Cl. 48 N. 89° 18' E. 79.159

GRANT ST. 11.857 & 29th
Anchor rod 52° 54' E 3.47
" " N 22° 10' W 4.29
S. and E. cor. 9' S. & Grid 57.327

CORVALLIS

N 00° 53' W Kings Road

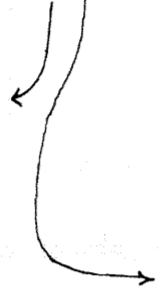
11-5
22-27

00010

0.5 230
T.M. 15 W

1924

THIS LINE IS OFF
(PLOTTED)



56

H. Eppard P. in place
at N. 7.40 x 26

16.526
16.422
15.819

2.522?

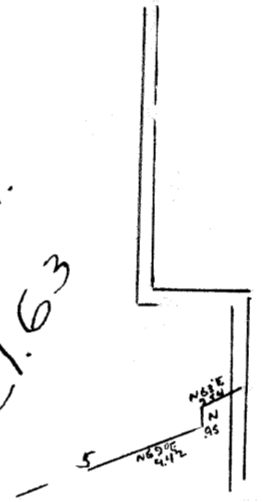
54

John D Mulkey
32.626
59.298 C1

59.298

24.397

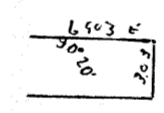
James L Mulkey Sr
C1.63



58.27
12.00

N. of N. Fence
81

1067
D = 28° ± R = 204.63
Δ = 89°39'
T = 203.4 (Partial decd 2)
E = 83.89
t = 220.18



1/8" D. in. all corr

N 0°19' W 80.318

90°20'

East

20.67
17.757
8.937

4" Pipe 5.275

293

1/11