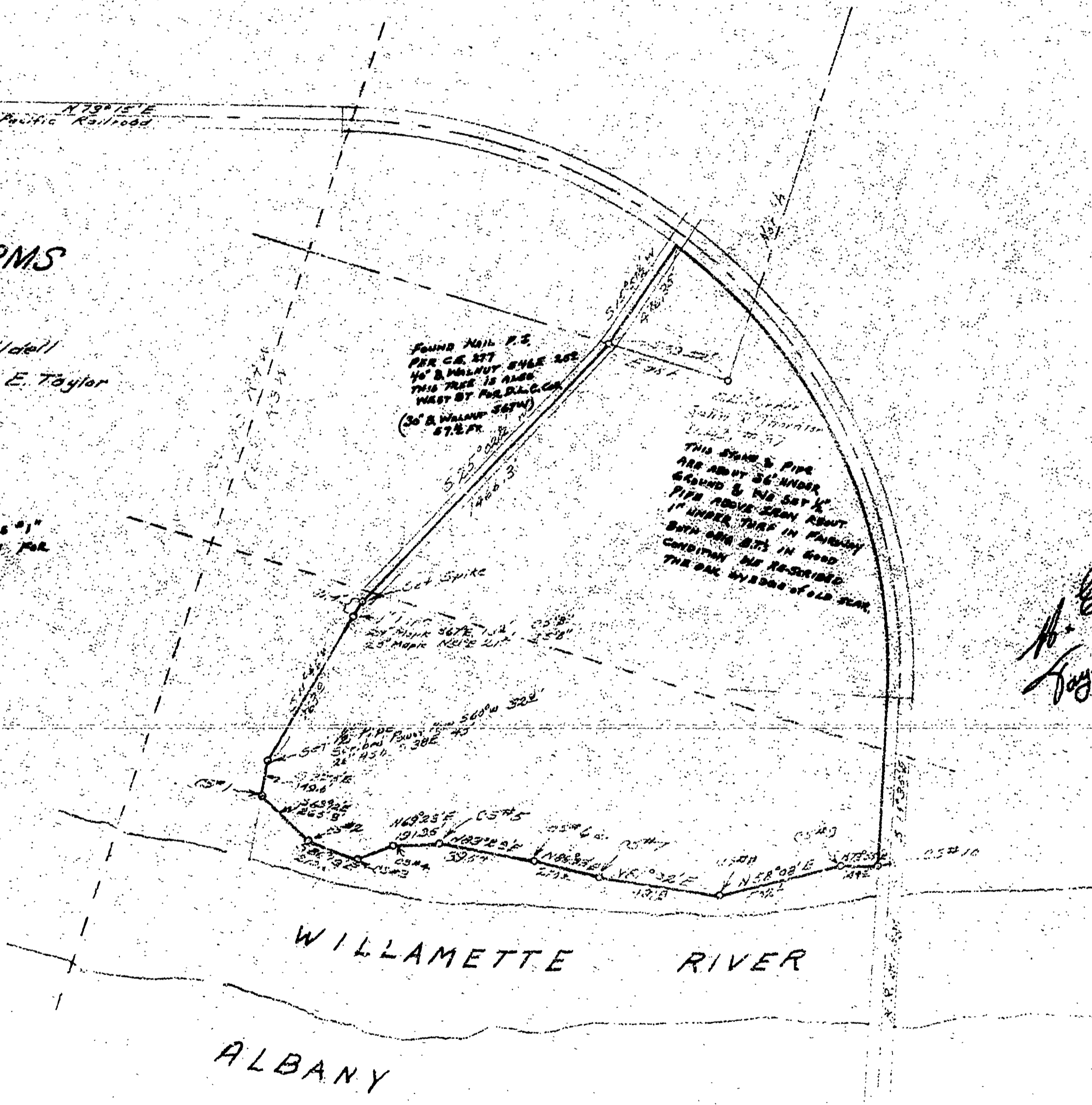


# C.S. No. 303A CLOVERDALE FARMS

Sec. 6, T.11S, R.3W.

April 9, 1958 Bert W. Udell  
Scale 1" = 400' by Howard E. Taylor

- C.S. #1 3/4" Pipe 34' Ash N19E 142' 6" C.S. #1  
N.E. Cor. of East Side of Second BENT  
FROM NORTH BOUNDARY POINT 581W 47' E BY POINTS C.S. #1  
THERE IS A 1/2" PIPE 64' BY 57' 5/8" OF C.S. #1 FOR  
WEST END OF ROAD & TRANSVERSE.
- C.S. #2 1/2" Pipe  
14' Ash N19E 372'
- C.S. #3 1/4" Pipe  
22' Ash N19E 108'
- C.S. #4 1" Pipe  
28' Ash S34E 152'
- C.S. #5 1/2" Conduit  
28' Balm N14W 112'
- C.S. #6 1/4" Pipe  
32' Balm S23E 408'
- C.S. #7 1/2" Pipe  
66' Fir S13E 312'
- C.S. #8 1/2" Conduit  
32' Fir S18E 274'
- C.S. #9 1" Pipe  
12' Maple S58E 208'  
16' Fir S33W 374'
- C.S. #10 S. 7' 3/4" Pipe 25' from E  
Center pole in RR Trestle  
Scribed piling on trestle  
500E 212'  
N. 35E 212'



FOUND NAIL P.S.  
PER C.S. 277  
40' 8" WALNUT UNDE 202  
THIS TREE IS ALSO  
WEST BY FOR D.L.C. CO.  
(30' 8" WALNUT 367W)  
57 1/2 FT.

THIS STAKE & PIPE  
ARE ABOUT 36" UNDER  
GROUND & NO SET K.  
PIPE ABOVE GROUND ABOUT  
1" UNDER TREE IN HANGING  
BUSH AND SETS IN GOOD  
CONDITION BE RE-SURVEYED  
THE OAL HYDRANT OF OLD YEAR

*Howard E. Taylor*

WILLAMETTE RIVER

ALBANY

3039