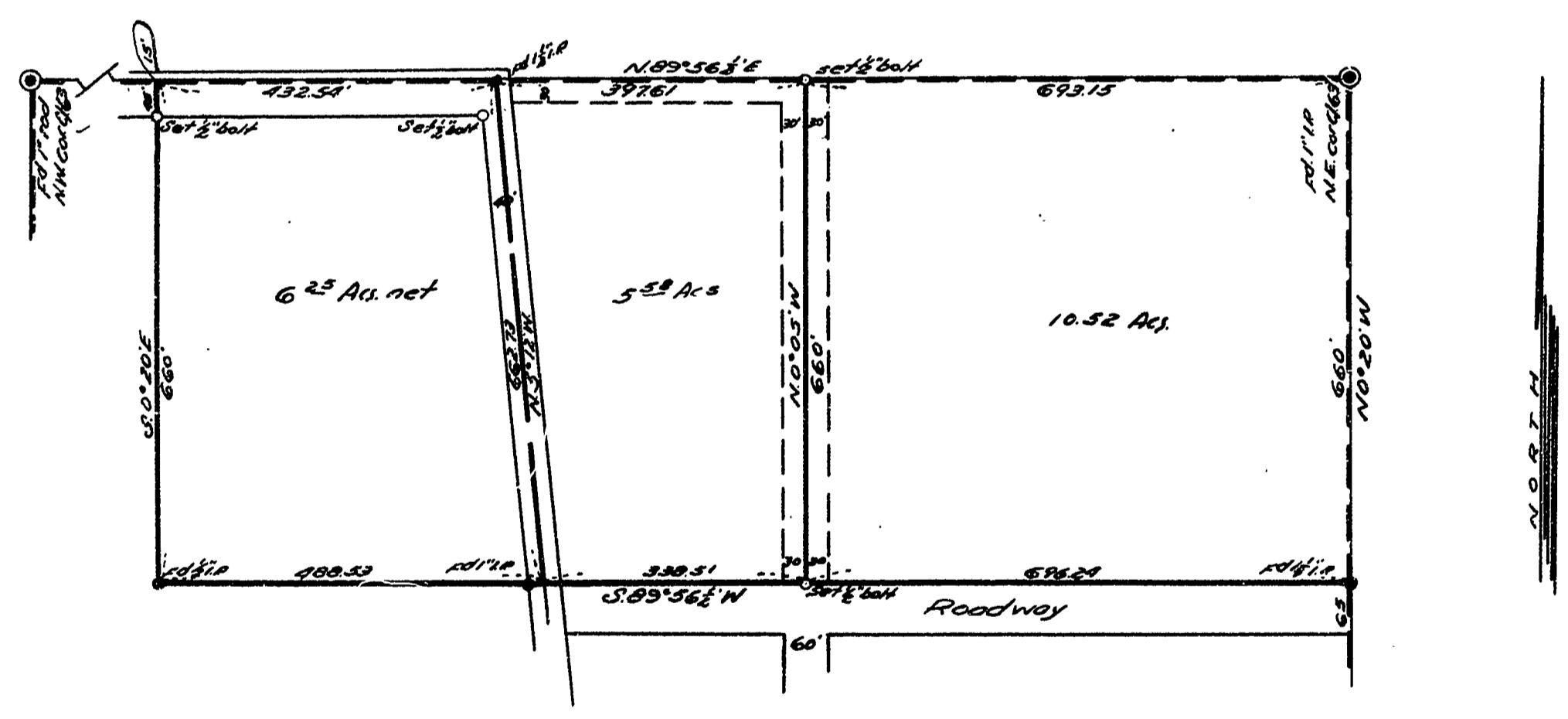


1" = 6 CHAINS

C.S. 3179
 ANNA WIESE
 Part of the James Mulkey D.L.C. N963
 T11S, R.5W, N4M.
 Benton County, Oregon
 Surveyed January 13, 1959
 Scale 1"=200'



REGISTERED
 OREGON
 LAND SURVEYOR
Richard W. Fail
 NOV. 4, 1955
 RICHARD W. FAIL
 357

REFI 9 FRAME 390