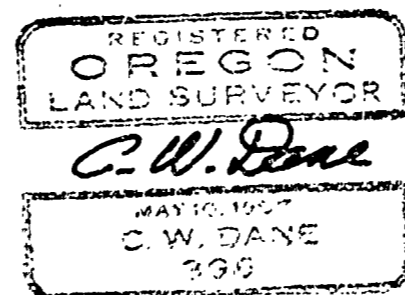


C. S. 3499
 SURVEY
 for
MRS. E. A. BLAKE
 D.L.C. 59, T. 10 S., R. 4 W., W.M.

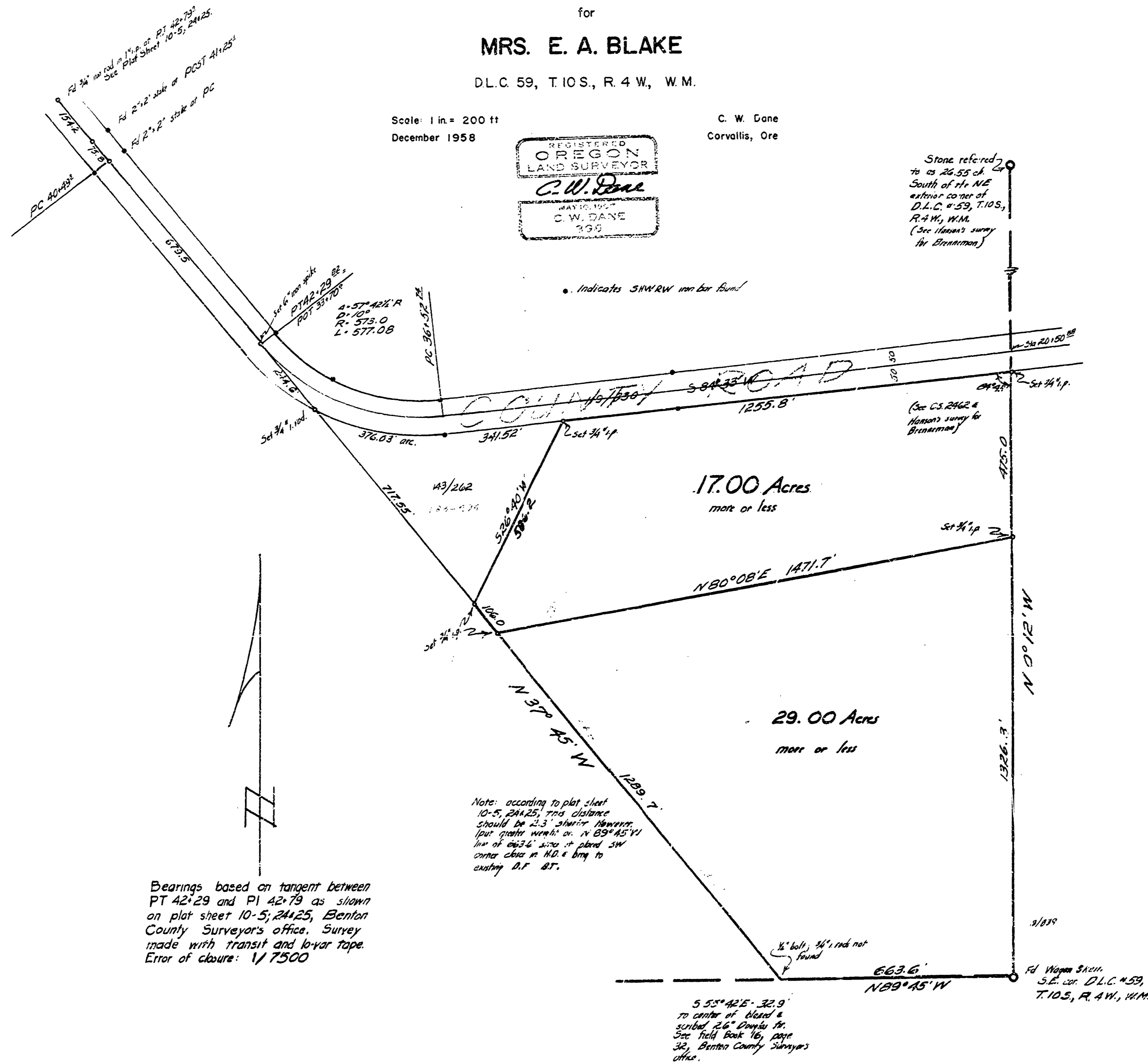
Scale: 1 in. = 200 ft
 December 1958

C. W. Dane
 Corvallis, Ore



Stone referred to as 26.55 ft South of N.E. corner of D.L.C. #59, T. 10 S., R. 4 W., W.M. (See Hagan's survey for Blountman)

• Indicates S.W.R.W. number found



10/7/58