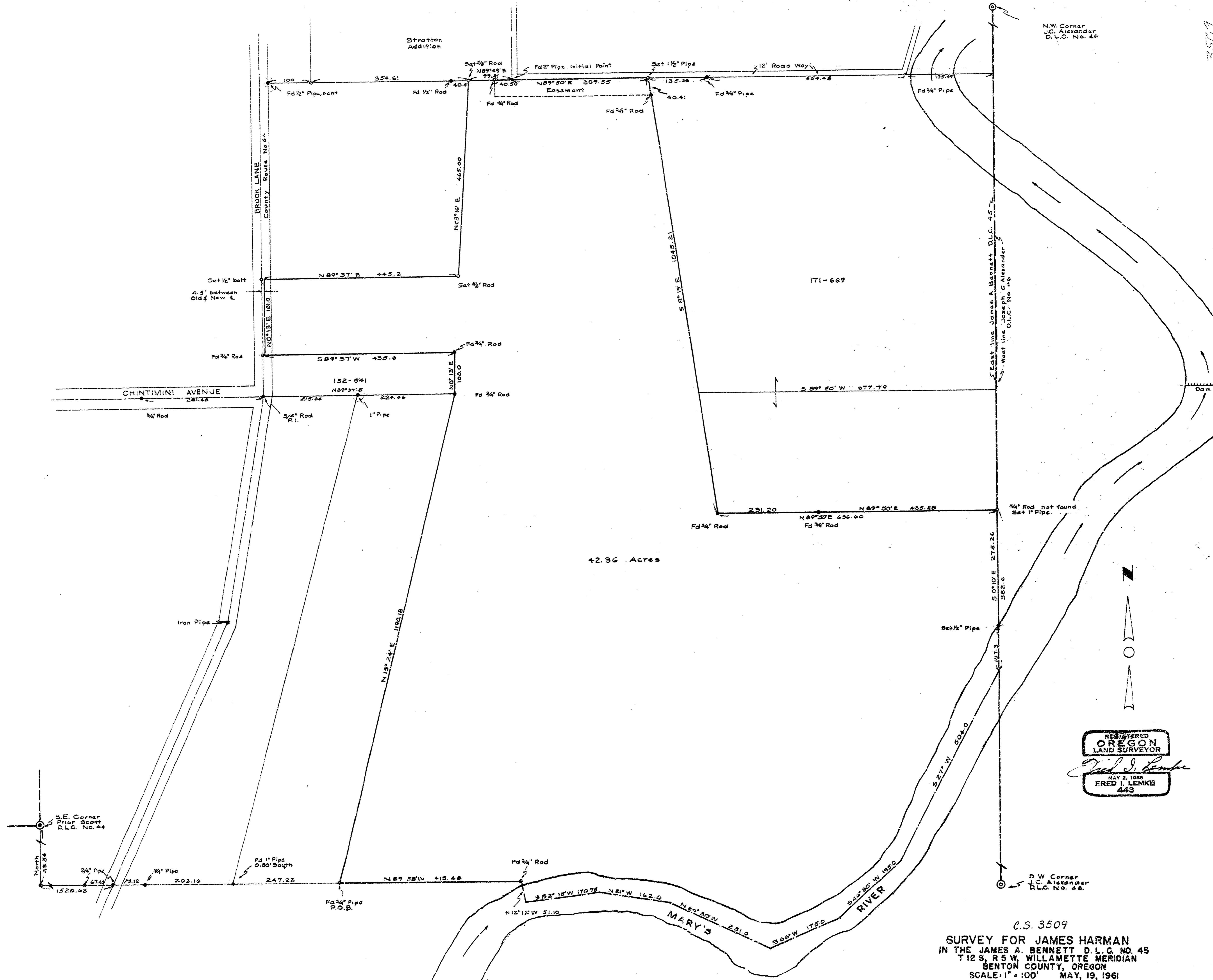


3509



N.W. Corner  
J.C. Alexander  
D.L.C. No. 46

East line James A. Bennett D.L.C. 45  
West line Joseph C. Alexander  
D.L.C. No. 46

S.W. Corner  
J.C. Alexander  
D.L.C. No. 46

S.E. Corner  
Prior Scott  
D.L.C. No. 44

42.36 Acres

171-669

REGISTERED  
OREGON  
LAND SURVEYOR  
*Fred I. Lemke*  
MAY 2, 1955  
FRED I. LEMKE  
443

C.S. 3509  
SURVEY FOR JAMES HARMAN  
IN THE JAMES A. BENNETT D.L.C. NO. 45  
T12S, R5W, WILLAMETTE MERIDIAN  
BENTON COUNTY, OREGON  
SCALE: 1" = 100' MAY, 19, 1961