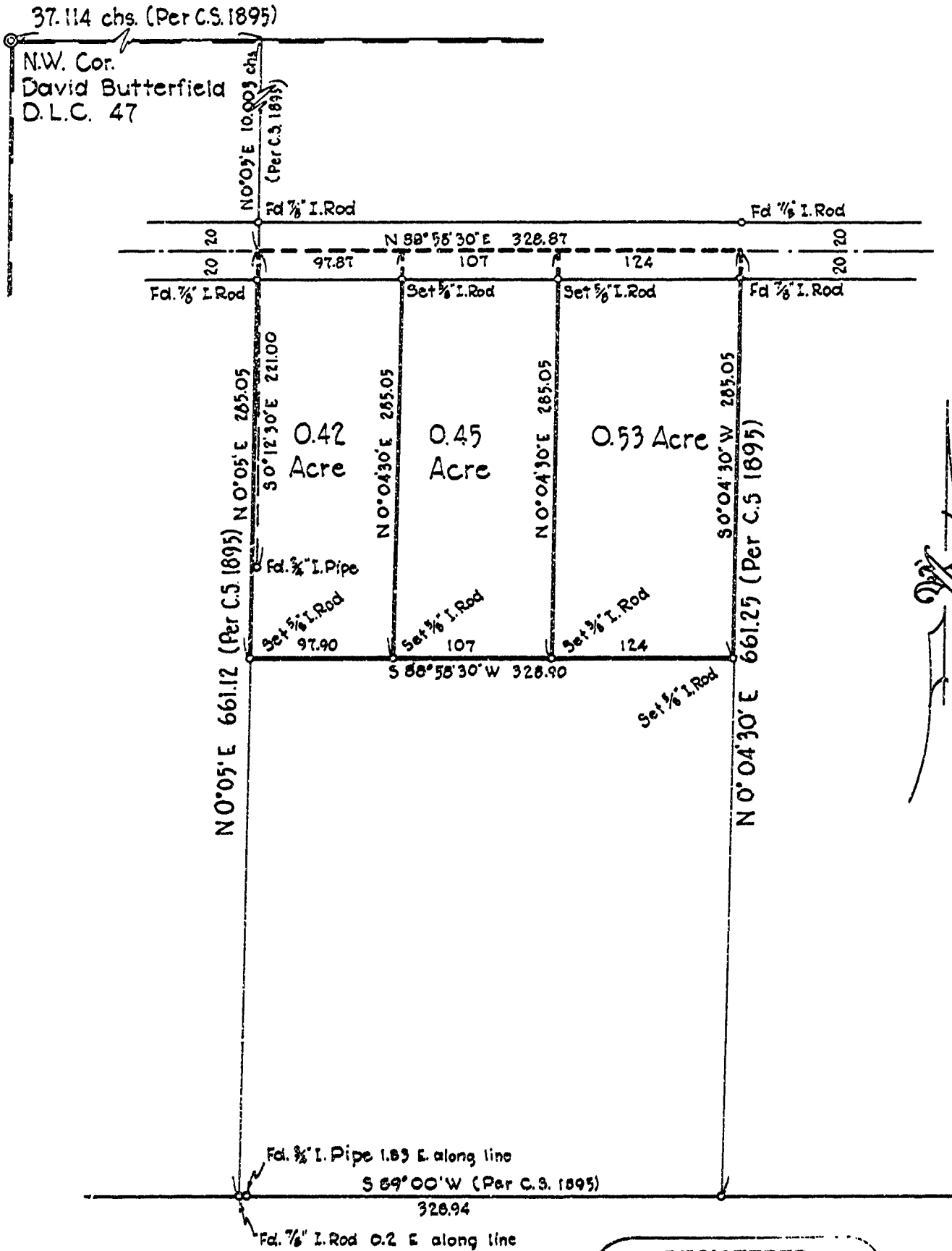


TOWN & COUNTRY REALTY

in the
 David Butterfield D.L.C. 47 T.12S., R.5W., W.B.&M.
 Benton County, Oregon
 Scale 1" = 100' January 6, 1962



MA
 Bearings Based on C.S. 1895

REGISTERED
OREGON
 LAND SURVEYOR
Verle C. Moore
 MAY 13, 1960
 VERLE C. MOORE
 501