

C.S. 3759

Survey For

# GEORGE S. MAYER

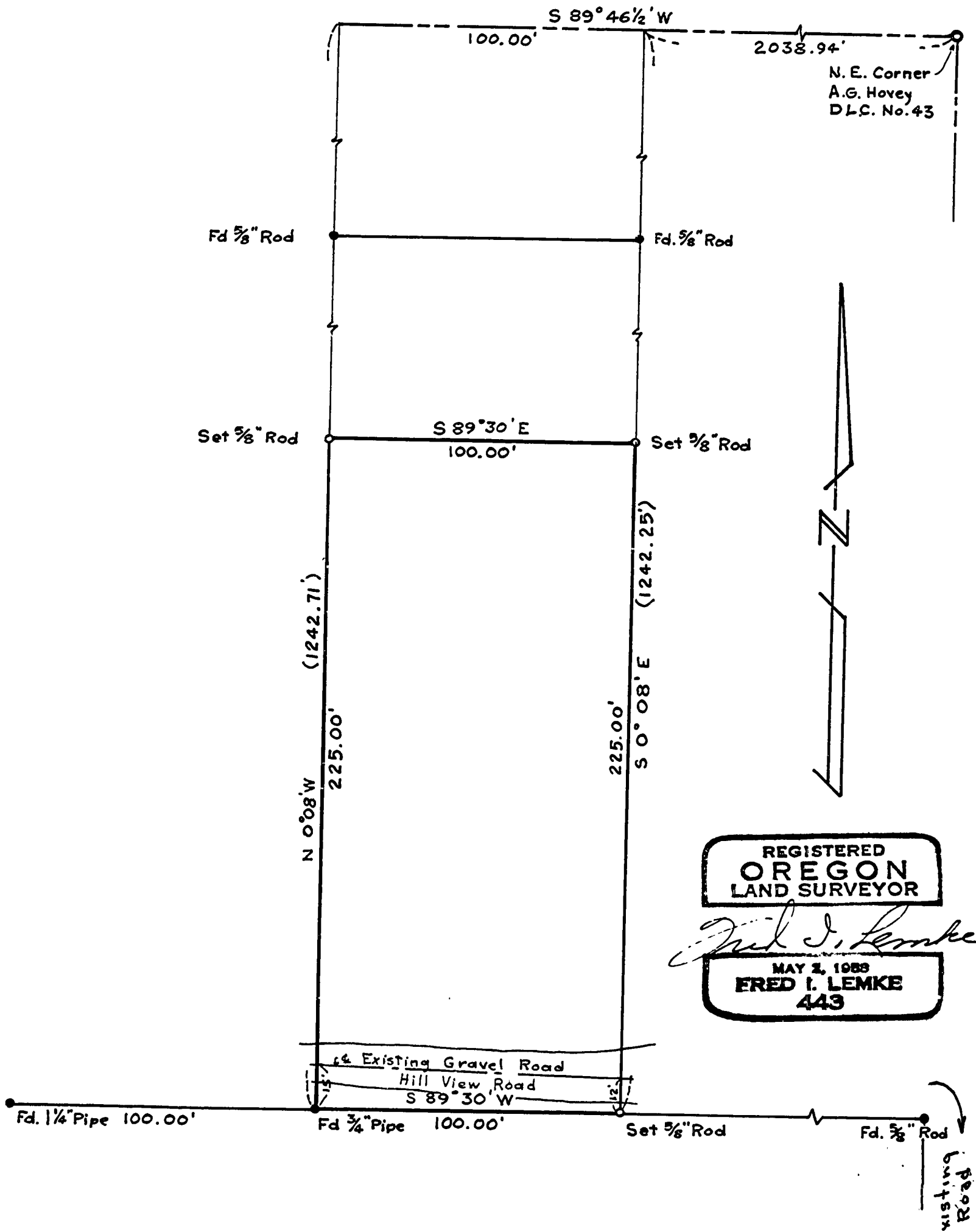
In the A.G. Hovey D.L.C. No. 43

Township 12 South, Range 5 West of W.M.

Benton County, Oregon

Scale: 1" = 40'

14 March, 1963



REGISTERED  
OREGON  
LAND SURVEYOR

*Fred I. Lemke*

MAY 2, 1963  
FRED I. LEMKE  
443