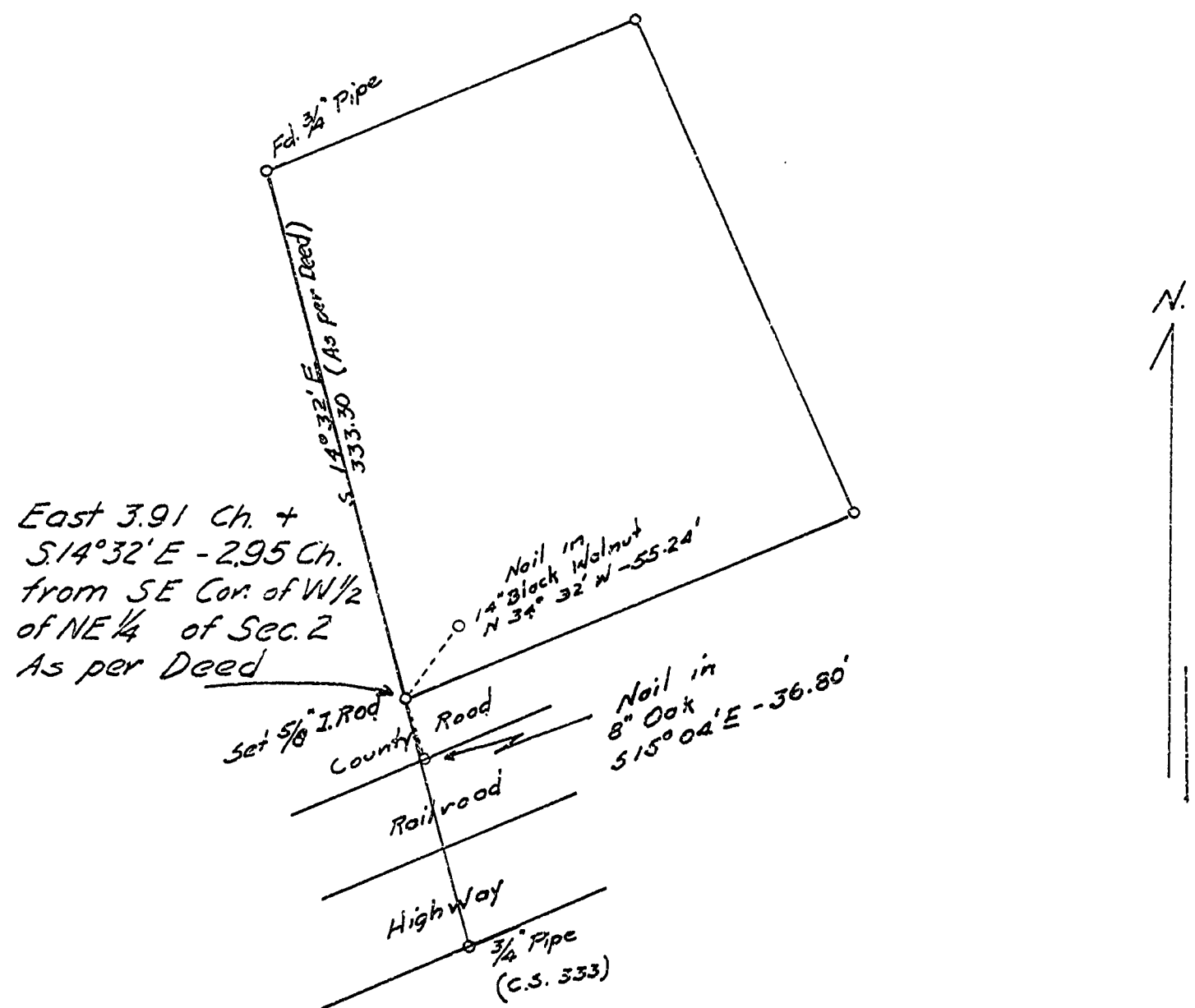


C.S. 3969
 Edwin H. Fobar
 Section 2 T11S R4W WB+M
 Benton County Ore.
 Scale 1"=100' Aug. 8, 1964



REGISTERED
 OREGON
 LAND SURVEYOR

N. C. Whitfield

JULY 10, 1964
 N. C. WHITFIELD
 663