

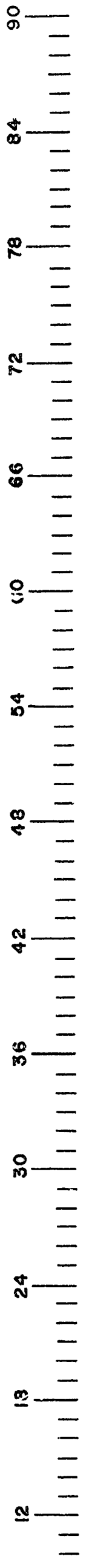
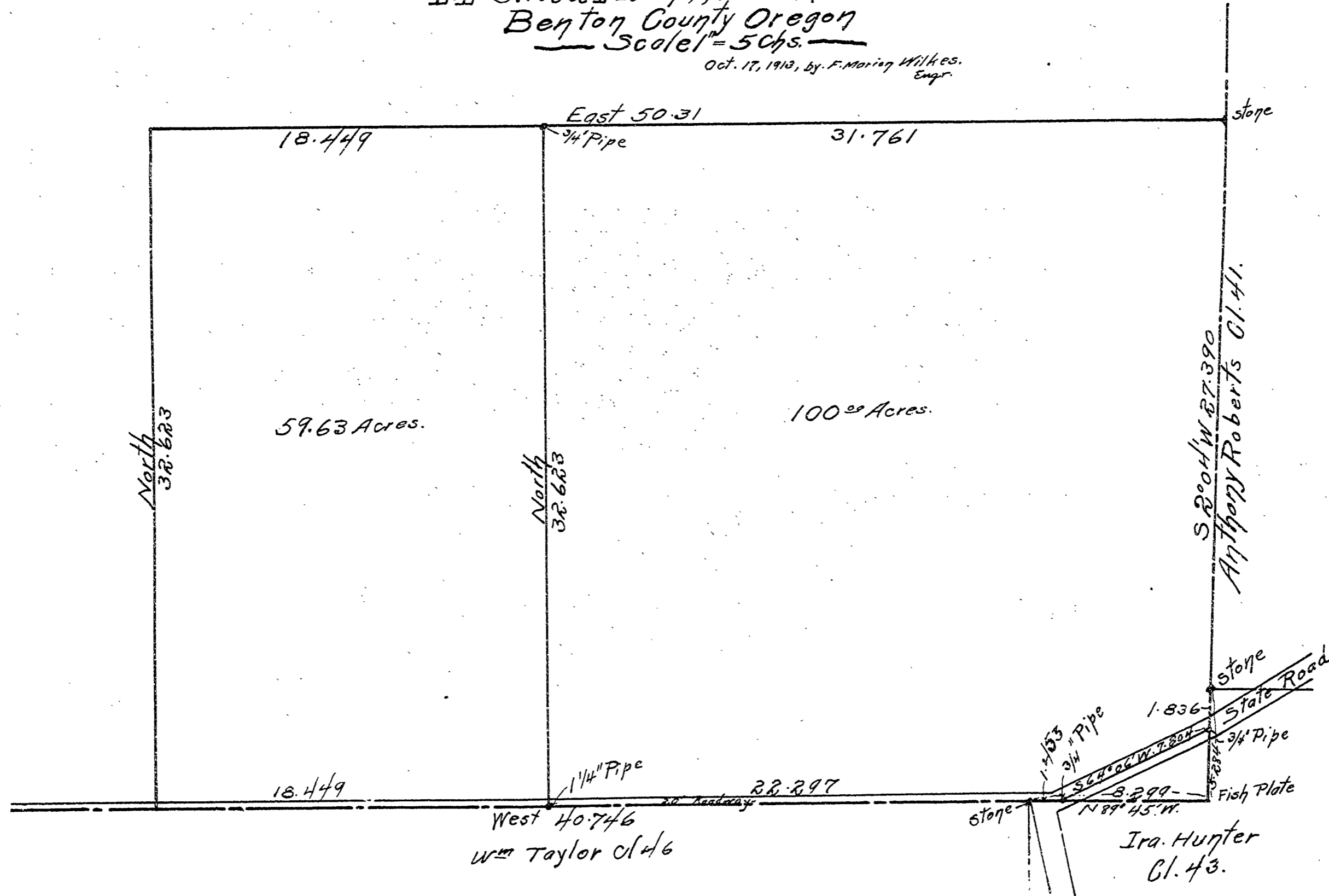
399

399

200

COUNTY SURVEY No 200-

for
 Mrs. J. L. Lindley, et. al.
 II-II. Stroud, J.L.C. #44, T. 11 S. R. 4 W. W.M.
 Benton County Oregon
 Scale 1" = 50 chs.
 Oct. 17, 1912, by F. Marion Wilkes.
 Engr.



CHAINS

