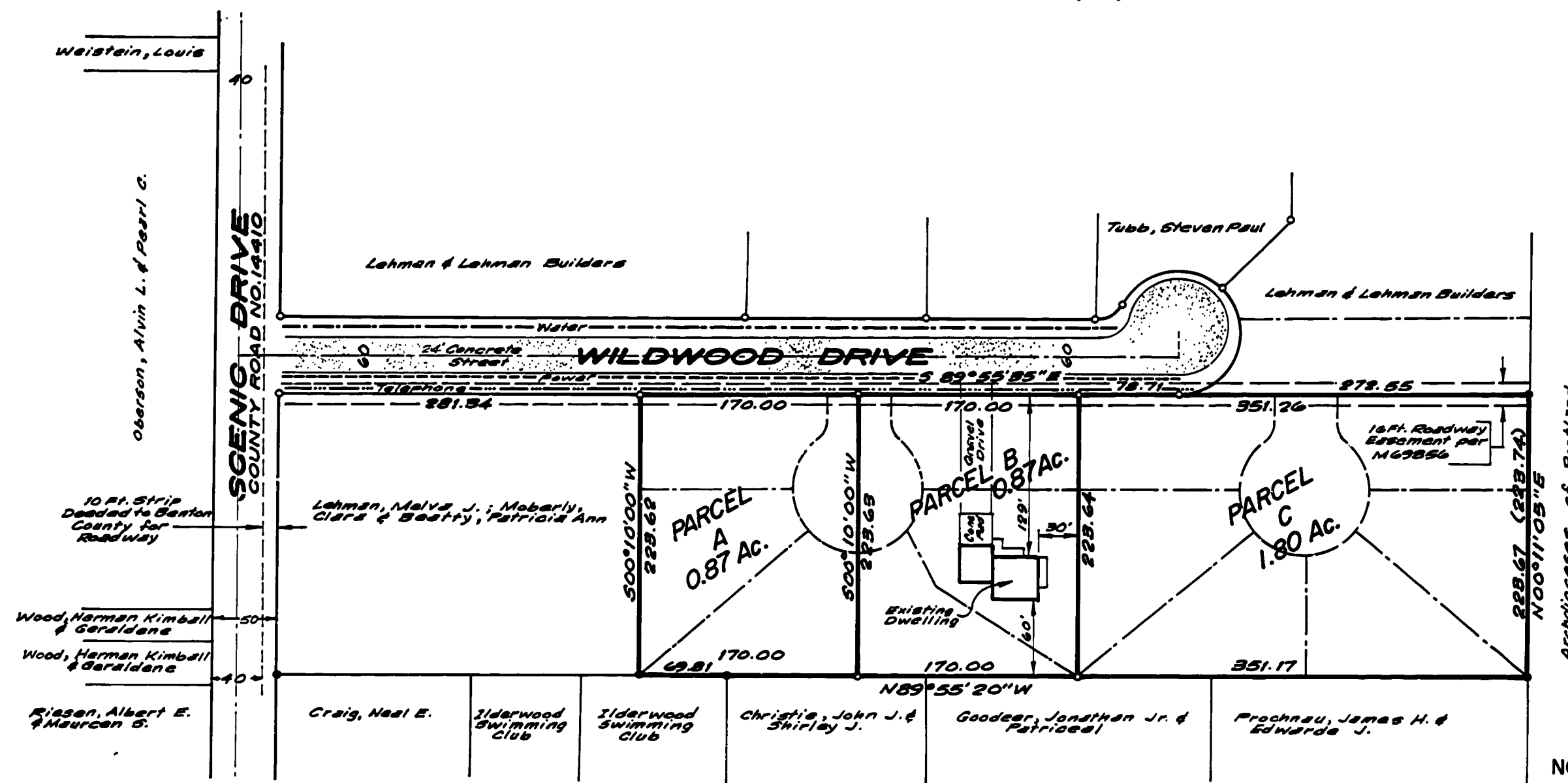


M.L.P.#3

MINOR LAND PARTITION  
for  
**L&L BUILDERS**  
NW 1/4 NE 1/4, Sec.2, T.11S., R.4W., WM.  
BENTON COUNTY, OREGON  
Scale: 1"=100' April, 1981



Based on C.S. # 6968  
found 5/8" I.R. per C.S. 6968  
oct. 5/8" I.R. per C.S. 6968

NOTE: this property was surveyed  
in this configuration in  
C.S. no. 6968

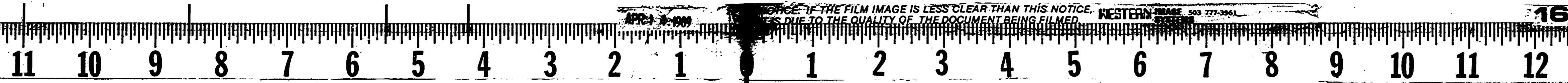
REGISTERED  
PROFESSIONAL  
LAND SURVEYOR

*Kenneth M. Wightman*  
OREGON  
JULY 17, 1970  
KENNETH M. WIGHTMAN II  
942

MINOR LAND PARTITION APPROVED

*James Rutschman* 4/30/81  
to planning official date

**Timberland McCullough**  
ENGINEERS SURVEYORS FORESTERS PLANNERS  
1010 Airport Road, S.E. • P.O. Box 668 • Albany, OR 97321  
(503) 926-9404 Offices in Albany • Bend • McMinnville • Sunriver



NOTICE: IF THE FILM IMAGE IS LESS CLEAR THAN THIS NOTICE, WESTERN IMAGE 503 727-3961  
PLEASE CONTACT THE FILM PROCESSOR FOR A RE-EXPOSURE. THIS NOTICE IS DUE TO THE QUALITY OF THE DOCUMENT BEING FILMED.