

TOWNSHIP 10 SOUTH, RANGE 3 WEST, WILLAMETTE MERIDIAN; SECTION 32 CORNER S 1/4
DONATION LAND CLAIM _____ CORNER _____

COMMON CORNER(S):

UPDATES AND REVISIONS:

CORNER RECORDS (PREVIOUS RENEWALS, SURVEYS, ETC.)

- [01] ORIGINAL GLO SURVEY BY JAMES FREEMAN DATED DECEMBER 17, 1852.
- [02] COUNTY SURVEY NO. 670 BY W.C. GALLOWAY DATED OCTOBER 10, 1919 (FIELD BOOK NO. 27, PAGE 15).
- [03] OLD CORNER RESTORATION BOOK NO. 1 PAGE 141 BY W.C. GALLOWAY DATED OCTOBER 10, 1919.
- [04] CORNER RESTORATION NO. 7 BY W.C. GALLOWAY DATED OCTOBER 8, 1919.
- [05] MAP NO. 10-3-00005 BY W.C. GALLOWAY DATED OCTOBER 16, 1919.

COMMENTS/LOCATION/ETC:

RECORD [04] IS A TRANSCRIBED COPY OF RECORD [03] AND MAY CONTAIN ERRORS AND OMISSIONS.

NOTES:

THIS IS A MICROSOFT WORD (VERSION 5.0) DOCUMENT NAMED "03240100" CREATED FROM A BOILER PLATE DOCUMENT NAMED "HISTORY", WHICH HAS A STYLESHEET NAMED "CORNER" ATTACHED TO IT.

FIRM/AGENCY: BENTON COUNTY SURVEYOR'S OFFICE
ADDRESS: 360 S.W. AVERY AVE. CORVALLIS OR 97333; PH. 757-6821
RESEARCH BY: CURTIS J. LIESENFELT/MARK E. ANDERSON
DATA ENTRY BY: MARK ANDERSON

BENTON COUNTY CORNER RESTORATION FORM, PAGE 1 OF 1, 103240100R1

SEE CORNER HISTORY FORM FOR RECORDS ETC.

CORNER RESTORATION FIELD BOOK NUMBER 15 PAGE(S) 31 DATE 4/27/1994
 TOWNSHIP 10 SOUTH, RANGE 3 WEST, WILLAMETTE MERIDIAN; SECTION 32 CORNER S 1/4
 DONATION LAND CLAIM _____ CORNER _____
 CONDITION REPORT _____; REFERENCED OUT _____; RENEWED XX; SURVEYED IN _____

LOCATION AND COMMENTS:

THE CORNER IS LOCATED IN A MINT FIELD APPROXIMATELY 420 FEET NORTH-NORTHWESTERLY FROM THE SOUTHEASTERLY EDGE OF SAID FIELD. IT IS SUITABLE FOR PREMARKING AND GPS CONTROL, BUT IT HAS BEEN TIED TO THE GPS NETWORK.

MONUMENTS AND ACCESSORIES FOUND (CONDITION AND SOURCE):

FOUND: A PARTIAL RUST RING AND SOME SMALL PIECES OF OXIDIZED METAL STARTING ABOUT 8" BELOW GROUND SURFACE AND CONTINUING TO ABOUT 24" BELOW GROUND SURFACE. WE WILL ACCEPT THIS AS BEST EVIDENCE OF THE CORNER POSITION. IT IS APPROXIMATELY 0.3 FEET NORTH AND WEST OF A POSITION COMPUTED AT RECORD ANGLE (FIELD NOTES OF RECORD [02]) AND DISTANCE FROM THE NORTH QUARTER CORNER OF SECTION 5 AND THE MEANDER CORNER FOR SECTION 5.

FOUND: 3 1/4" BENTON COUNTY BRASS CAP AT THE NORTH 1/4 CORNER OF SECTION 5 AS PER CORNER NO. 113240700, BEARS S 89° 30' 05" E 605.07 FEET (S 89° 38' 01" E 604.76 FEET AS COMPUTED FROM FIELD NOTES OF RECORD [02], S 89° 40' E 604.76 FEET AS PER RECORD [05]).

NO OTHER RECORD EVIDENCE WAS RECOVERED.

MONUMENT SET (PROCEDURES AND DESCRIPTION):

SET: 2" INSIDE DIAMETER X 36" LONG IRON PIPE WITH A 3 1/4" BENTON COUNTY BRASS CAP, STAMPED AS SHOWN, 21" BELOW GROUND SURFACE AND CENTERED OVER THE REMAINS OF THE RUST RING.

NEW ACCESSORIES:

SET: REBAR (SEE NOTES) 20" BELOW GROUND SURFACE, BEARS S 60° 20' W 30.73 FEET.

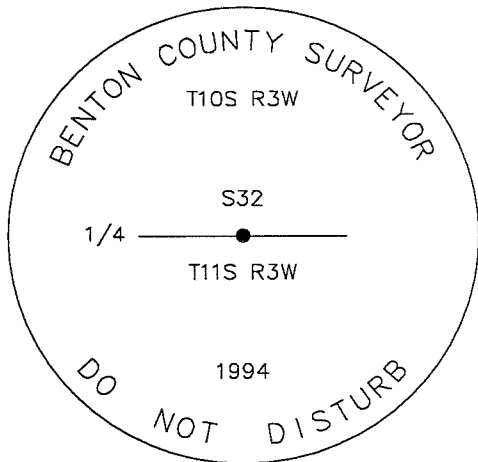
SET: REBAR (SEE NOTES) 20" BELOW GROUND SURFACE, BEARS N 48° 26' W 28.80 FEET.

FOUND: 1" OREGON STATE PARKS ALUMINUM CAP MONUMENT AS PER COUNTY SURVEY NO. 6628, 20" BELOW GROUND SURFACE, BEARS S 70° 01' 40" E 429.11 FEET.

FOUND: 1 1/2" OREGON STATE PARKS ALUMINUM CAP MONUMENT AS PER COUNTY SURVEY NO. 6628, BEARS N 63° 20' 10" E 724.52 FEET. SAID MONUMENT IS 1.5 FEET NORTHWESTERLY OF SIGN.

SET: ORANGE FIBERGLASS "SURVEY MARKER" POST 429 FEET EAST-SOUTHEASTERLY, NEAR 1" ALUMINUM CAP MONUMENT.

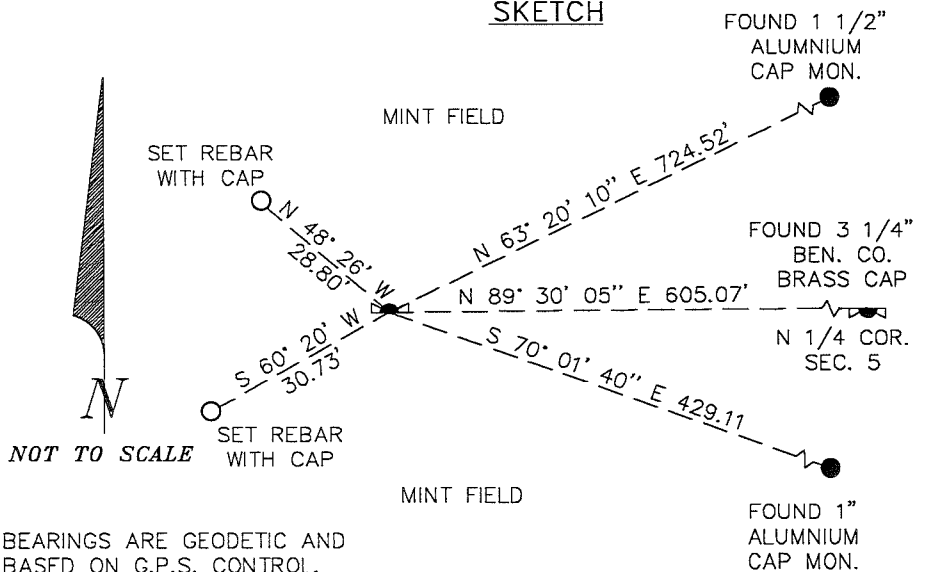
MONUMENT DETAIL



3 1/4" BRASS CAP

NOTE: BEARINGS ARE GEODETIC AND BASED ON G.P.S. CONTROL.

SKETCH



NOTES:

COMPASS DECLINATION IS 20° EAST. ALL MEASURED DISTANCES AND COMPASS BEARINGS ARE TO THE CENTER OF THE OBJECT, UNLESS OTHERWISE NOTED. ALL BEARING TREES ARE PAINTED AND HAVE A B.T. TAG ATTACHED, FACING THE CORNER UNLESS OTHERWISE NOTED. ALL NEW BEARING TREES HAVE A BRASS WASHER (STAMPED "BENTON COUNTY SURVEYOR") ATTACHED TO A SIDE CENTER UNLESS OTHERWISE NOTED. ALL LIVE BEARING TREES HAVE A PLASTIC WASHER (STAMPED "BENTON COUNTY SURVEYOR CORNER RESTORATION") ATTACHED TO THE BACK OF THE TREE OPPOSITE THE CORNER UNLESS OTHERWISE NOTED. ALL SET REBAR ARE 5/8" X 30" AND HAVE A YELLOW PLASTIC CAP (STAMPED "BENTON COUNTY SURVEYOR") ATTACHED TO THE TOP.

THIS DOCUMENT WAS NAMED AND CREATED IN A MANNER SIMILAR TO THE HISTORY FORM. THE NAME OF THE BOILER PLATE IS "MONUMENT". THE BORDER, STAMP AND SKETCH ARE FROM AUTOCAD RELEASE 12.

THIS RESTORATION WAS PERFORMED AT THE DIRECTION AND APPROVAL OF THE BENTON COUNTY/DEPUTY COUNTY SURVEYOR. _____

FIRM/AGENCY: BENTON COUNTY SURVEYOR'S OFFICE
ADDRESS: 360 S.W. AVERY AVE. CORVALLIS OR 97333; PH. 757-6821
SURVEYOR: CURTIS J. LIESENFELT
SURVEY CREW: MARK E. ANDERSON

REGISTERED PROFESSIONAL LAND SURVEYOR

Curtis J. Liesenfelt

OREGON
 JULY 17, 1986
 CURTIS J. LIESENFELT
 2213

LICENSE RENEWAL 12/31/1994

C.S. 245 cont.
Road #414

S.E. corner of Wiley Wierke Cl. 48 T. 13 S.
Set 1 1/4" shaft for corner from N.E. cor. of Grimsley's Cl.
Oak 17" in dia. bears S. 15° 15' E. 3.223 chs.
S. 1/4" double oak 12" in " " N. 73° 21' W. 4.607 " of Grimsley's Cl.
N.E. corner of R. D. Grimsley's Cl. #49 N. 49° 21' W. 3.73 chs.

C.S. 277
W.C.S.
Oct. 6 & 11, 1919.
W. H. Marshall &
Wm. Phillips.

1/4 sec. cor. between secs. 31 & 32 T. 10 S. R. 3 W.
Set 3/4" x 18" bolt 1 1/2" under the surface.
Oak 36", is stump tipped over, S. 55° E. 2.91 chs.
Fir 36", " " hole S. 42° E. 2.67 " set stake S. 097 chs.
See plat of C.S. 277 for other ties to locate cor. is found is shown.

1/4 sec. cor. between secs. 32 & 33 T. 10-3.
Set 1" x 24" bolt & glass. Ash stump 12" N. 21° E. 27. Maple 15" North .52 chs.
Maple 34" in dia. bears North .524 chs.
Fir 48" " " " N. 35° W. .524 "

Cor. bet. secs. 31 & 32 on 2nd. std. parallel S. T. 10-3
Set 1/2" black pipe proportion at distance.
A 1" x 1" pipe S. 84° 42' E. 3.243 chs.
A. Stone N. 54° 42' W. 40.122 chs.

3rd
Corner between secs. 5 & 6 on 2nd. std. parallel S. T. 11 S. R. 3 W.
Set 1" x 1" pipe. Proportional distance. fence used as ^{E line} controlling
1/2" pipe bears N. 89° 42' W. 9.243 chs.
a Stone 8" x 8" x 6" S. 88° 40' E. 4.538 "

1/4 sec. cor. on south line of section 32, T. 10 S. R. 3 W.
Set 3/4" x 18" bolt. Set by proportional dist.
Ash 14" in dia. bears S. 18° 15' W. 6.84 chs.
" 5" " " " N. 71° W. 4.17 "

Std. 1/4 sec. cor. on north line of sec. 5, T. 11 S. R. 3 W.
Set Double shotgun barrel from fir S. 5. 15° W. 1.8 chs.
Maple 15" in dia. bears N. 38° E. .203 chs.
Fir 8" " " " S. 78° W. .18 "

M.C. on west bank of Willamette River on 2nd std. parallel
South, at a distance 14.185 chs. N. 89° 52' E. of 1/4 sec. cor.
on north line of sec. 5, T. 11 S. R. 3 W.
Set 1/2" pipe from riv. balm. 18° E. 21. which is about 20" in dia.
13" alm 8" in dia. bears S. 18° E. .21 chs. std.
" 15" " " " S. 61 1/2° W. .153 "

1/4 sec. corner on south line of sec. 31 T. 10 S. R. 3 W.
It is .53 chs. E. of
A stone already set 6" x 8" x 8" It is a squared stone with + on top.
Which stone is on the east line of J. Q. Thornton Claim 37.



143 at
maple
6
used
Recorder
979

$\frac{1}{4}$ -section corner on South line of section 32, Twp. 10 S. R. 3 W. and 11-3-5

Reestablishment by W. C. Galloway

October 8, 1919

Set $\frac{3}{4}$ " x 18" bolt, set by proportional distance.

Ash 14" in diam bears S 18° 15' W

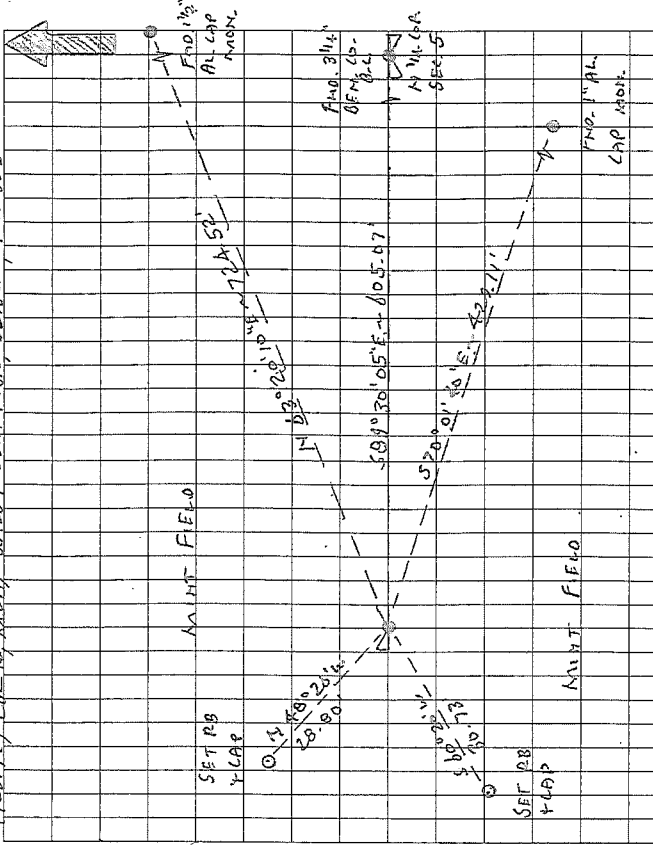
.684 chains

Ash 5" in diam bears N 71° W

.417 chains

Witnesses W. H. Worrell and William Phillips

4/22/94; CAP MON. NEAR WILCO/LECLA TILD. DILLON, P.C. 60'S



SET: GRAVINE FORECLASS "SUPPLY MEMBER" ABOUT 429' E-SE-ly

NEAR 1" AL CAP MON.
THE COR. IS LOCATED IN A HUNT FIELD APPROX 420'
N-ly IN FROM THE SE 1/4 COR. OF SAID FIELD. IT
IS SUITABLE FOR PLACEMENT OF SPI. CONTROL, BUT
IT HAS BEEN TIED TO THE GPS INSTRUMENT.

SET RB YCAP
MOUNT FIELD
FINDING AL CAP MON.
TIES 2360
STANDARDS
TIES 2360
1994

240166

TLOS R3W. SEC. 32 S 1/4
93655 F 510' 20" BEM. CO. YPL

BS 1/8 F 24244

TURNEO 11° 23' 32" (24) MEAS. G.M.D. DIST. OF 129.65 TO SET S 1/4

COR. SEC. 32 (#4)

FIND. A PARTIAL RUST RING Y SOME SMALL PIECES OF OX-

IDIZED METAL STARTING ABOUT 0" 0.15 Y CONTINUING

TO ABOUT 2 1/2" 0.65, WE WILL ACCEPT THIS AS BEST END

OF THE CORNER POSITION. IT IS APPROX. 0.3' N Y W OF

A POSITION COMPUTED AT RECORD 7 (FIELD NOTES OF REC

[7]) Y DIST. FROM THE N 1/4 COR. OF SEC. 5 Y THE N.C.

FOR SEC. 5.

" 3 1/4 BEM. CO. B.L. ON THE 1/4 COR. SEC. 5 AS PER COR.

NO. 240760, BEARS S 89° 30' 05" E 105.07' (S 89° 30' 01" E ~

604.76' AS COMPUTED FROM FIELD NOTES OF REC [7], S 89°

40' E ~ 104.76' AS PER REC. [7].

NO OTHER RECORD EVIDENCE WAS RECOVERED

SET: 2" 1/2 x 3/8" LONG IRON PIPE @ A 3 1/4" BEM. CO. B.L.,

STAMPED AS SHOWN, 21" 0.65 Y CENTERED OVER THE

REMAINS OF THE RUST RING.

" REBAR (SEE NOTES) 20" 0.65 BEARS S 10° 20' W ~ 30.73'

" " " " N 48° 21' W ~ 28.00'

FINDING AL CAP MON. AS PER COR. 628, 20"

0.65, BEARS S 20° 01' 40" E ~ 429.11'

" 1 1/2" DR. ST. PARKS AL CAP MON. AS PER COR. 620, BEARS

N 83° 20' 10" E ~ 724.52'. SAID MON. IS 1.6' N.W. 1/4 OF

SIGN.