

- # 120 v S.E. cor. of John Rodgers D.L.C. # 66 Tp 10-4  
 Set 1 1/4" pipe, plug in top.  
 Carrier 4" in dia. bears N. 23° 40' W. .863'  
 Witnesses Dec. 30, 1911.
- # 120 v 1/4 sec. cor. between sec. 7+18, Tp. 10-4  
 Set 1" steel shaft. stump + stump hole.  
 Oak 7" in dia. bears S. 37° W. .123  
 " 10" " " " N. 63° 10' W. .242  
 Witnesses E. A. Thurston. Jan. 1, 1912.
- # 121 v S.E. cor. of Silas Newcomb's D.L.C. # 52 Tp. 12-5.  
 Set 1" pipe stump std. kingbolt in old stump hole.  
 Oak 10" in dia. bears N. 83° 12' E. 3.660'  
 " 16" " " " S. 40° 50' E. .977'  
 Witnesses J. A. Parks + ~~Thurston~~ <sup>Geo</sup> Cooper. Jan. 16, 1912
- # 121 v N.E. cor. of Chas. Bates. D.L.C. # 53 Tp. 12-5  
 Binder - Lubina 2" x 2"  
 Oak 16" in dia. bears N. 40° 10' E. .717'  
 " 20" " " " West .808'  
 Witnesses J. A. Parks + Geo. Cooper. Jan. 16, 1912.
- # 123 v Cor. 45.549' N. 59° 43' W. of N.E. cor. of John Trapp's D.L.C. # 56 Tp. 11-5  
 Stone already set. Ash stump S. 70° E. .46' (Pipe 11.20"  
 Oak 6" in dia. bears S. 50° 45' E. .770' (Pipe 5.20"  
 " 18" " " " N. 56° 20' W. .634'  
 Witnesses M.A., J.E., J.A. + W.C. Wyatt. Jan. 27, 1912.
- # 146 v S.W. cor. Jacob J. Hatter D.L.C. # 73 Tp. 10 S. R. 4 W. 1/4 NW.  
 Set 30x4x4" Oak stake for cor. from which  
 in Oak 10" dia. tree. S 2° 15' W. 29.4 lbs. dist.  
 S.E. original tree stdy. S.W. stump. 2-5-1912
- " S.E. cor. Jacob J. Hatter D.L.C. # 73 10 4  
 Set 30x4x4" Oak stake for cor. from which  
 in Oak 10" dia. tree. N 35° 40' E. 112.2 lbs. dist.  
 " " 16" " " N 64° 50' E. 200 " "  
 Both original trees gone, stumps left. 2-5-1912
- v S.W. cor. Wm Harrison Johnson D.L.C. # 63 10-4  
 Set Stone 1 1/2 x 1 1/2 x 8" for cor. from which  
 in Oak 10" dia. tree. S 64° W. 42.3 lbs. dist.  
 " " 17" " " " 87°-35' W. 35.15 " "  
 Both original st. gone. 2-5-1912
- S.E. 1/4  
 S.W. 1/4  
 S.C. 2nd Standard of all south ut. sec. 3+4 1/4 S. R. 4 W. 1/4 NW.  
 Set Oak post 38x8x4" for cor. from which  
 in Oak 27" dia. tree. S 27°-35' E. 60 lbs. dist.  
 " " 7" " " " 57° 25' W. 106 " "  
 2-6-1912

Southwest corner Jacob L. Halter DLC 73, Twp 10 S R 4 W WM

155151

Reestablishment by ~~W. C. Galloway~~ \*

February 5, 1912

Set 30 x 4 x 4" Oak stake for corner

Oak 10" in diam bears S 2° 15' W 29.4 lks distant

S. E. Original tree standing. S. W. stump

\*J.A. GANONG SEE COUNTY SURVEY NO. 287 (FIELD BOOK NO. 9 PAGE45 + COVER)(CJL 3/17/92).

Re-established by Curtis C. Hanson

<sup>156</sup>  
March 28, 1961

All Gone

SET 3/4" Rod proportionate distance between northeast and northwest corners  
of Anthony Roberts D.L.C. 55.

Oak 5" diam. South 0.068 chains Blaze, No Scribe

T105 R4W SEC. 32 E1/4 S SW COR. T100R4L. WATER DLE NO. 73

END: 7/8" IRON ROD FOR THE COR. (COR. REST. NO. 151)

" THE MOSTLY ROTTED REMAINS OF AN OLD STUMP 10"

1M O.D. BEARS S 103° E \* ~ 5.4 (500 S" 0.9M SOUTH)

4.49' COR. REST. NO. 151. SET B. BT. TAG ON THE TOP

OF THE STUMP

" 3 1/4" BEN CO. BS. @ THE NW COR. OF THE ANTHONY

ROBERTS DLE NO. 55 AS PER COR. REST. NO. 3915

BEARS N 89° 19' 31" E \* ~ 596.87' (N 89° 58' 15" W ~ 596.84'

CS # 5743).

NO OTHER RECORD BEARING OBJECTS WERE RECOVERED

SET: 2" 1.0" X 3/8" LONG IRON PIPE @ 0 3/4" BEN. CO. B.C.

STAMPED AS SHOWN CENTERED OVER THE RECOVERED

7/8" / ROD.

" 5/8" X 3/4" REBAR @ A.Y.P.C. MKD. "BENTON COUNTY SUR-

VEYOR" BEARS N 32° 30' E \* 13.45'. THE REBAR IS ON

THE NLY EDGE OF THE BRUSH LINE.

AN OK 12" IN DIA. BEARS S 67° E \* 13.11', FACED &

SCRIBED "1/4 S32 DLE 55 BT". SET A PK + B.C.B.W.

1M THE SW'Y BASE SET A B.T. TAG ON THE NW'Y FACE

AN OK 8" IN DIA. BEARS S 46° 15' W \* 4.02, FACED &

SCRIBED "1/4 S32 DLE 55 BT". SET A PK + B.C.B.W. IN

THE NW'Y BASE. SET A B.T. TAG ON THE NE'Y FACE

4118/91, SEE W. MEAD. KUN DISTSCOPE, BEUNTON COMP. 200° E. DEC.

10/16

GRASS FIELD

WOODS

12" OAK

8" OAK

5 B9119' 31" W ~ 596.87'

N 89° 58' 20" W \* \*

SET 5/8" REBAR @ CAP

SET 5/8" REBAR @ CAP

SET 5/8" REBAR @ CAP

13.45

12" OAK

WOODS

8" OAK

15' OAK

5' 4"

SET 5/8" REBAR @ A.Y.P.C. MKD. "BENTON COUNTY SUR-VEYOR" BEARS N 42° 30' W \* 14.29'. THE REBAR IS ON THE NLY EDGE OF THE BRUSH LINE.

" DEANKE FIDEL GLASS "SURVEY STAGE" POST 2' IN 'Y

THE COR. IS LOCATED IN AN OLD F.W. L.O.V. BY FENCE

LINE NOW MOSTLY DOWN W 1/5' S 'Y FROM THE S 'Y

EDGE OF A FINE BERRY BUSH'S THE S. SIDE OF A

GRASS FIELD. IT IS POOR FOR

PREPARING & GPS CONTROL.

T105 R4W

11/4

DIC

532 73

533

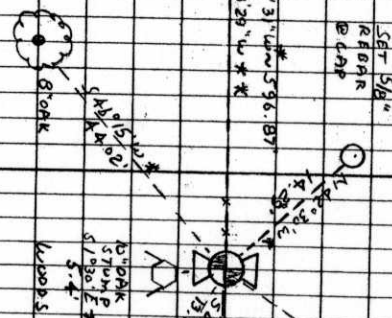
CAP STAMENS

DLE 55

5W COR DLE 72

AL HANOTER

1991



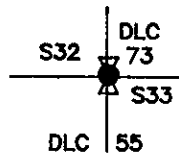
**BENTON COUNTY CORNER RESTORATION FORM**

104300140  
3916

TOWNSHIP 10 S RANGE 4 W SECTION 32 D.L.C. JACOB L HALTER NO. 73 S.W. COR. E 1/4 CORNER SEC. 32  
DATE 4/18/91 CORNER RESTORATION FIELD BOOK NUMBER 10 PAGE(S) 16

**CORNER DESIGNATION:**

THE QUARTER CORNER COMMON TO SECTIONS 32 AND 33 AND THE SW CORNER OF THE JACOB L HALTER DLC NO. 73, IN T 10 S, R 4 W, WILLAMETTE MERIDIAN.



- \_\_\_\_\_ CONDITION REPORT ONLY
- \_\_\_\_\_ REFERENCED OUT
- XX RENEWED
- \_\_\_\_\_ SURVEYED IN

**LOCATION AND COMMENTS:**

THE CORNER IS LOCATED IN AN OLD EAST-WEST WOVEN AND BARBED WIRE FENCE LINE NOW MOSTLY DOWN AND 11.5 FEET SOUTHERLY FROM THE SOUTHERLY EDGE OF A FIRE BREAK ALONG THE SOUTH SIDE OF A GRASS FIELD.

**PREVIOUS RENEWALS/SURVEYS, ETC:**

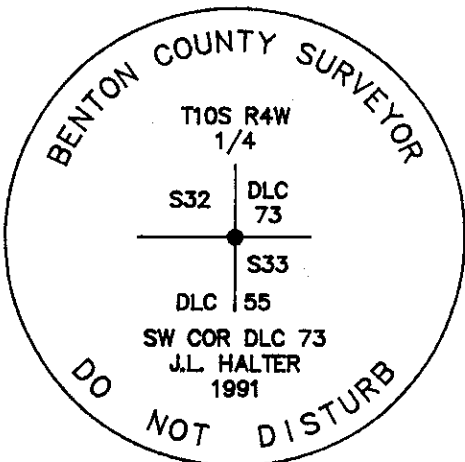
- ORIGINAL GLO SURVEY BY JAMES FREEMAN DATED DECEMBER 17, 1852.
- COUNTY SURVEY NO. 48 BY UNKNOWN PERSON DATED MAY 12, 1857.
- GLO SURVEY BY MADDEN VANDERPOOL DATED AUGUST 12, 1857.
- COUNTY SURVEY NO. 287 BY J.A. GANONG DATED FEBRUARY 5, 1912.
- OLD CORNER RESTORATION BOOK NO. 1 PAGE 28 BY J.A. GANONG DATED FEBRUARY 5, 1912.
- CORNER RESTORATION NO. 151 BY W.C. GALLOWAY DATED FEBRUARY 5, 1912.
- CORNER RESTORATION NO. 151 BY CURTIS C. HANSON DATED MARCH 28, 1961.
- COUNTY SURVEY NO. 5743 BY KEN WIGHTMAN II DATED SEPTEMBER 4, 1974.

**MONUMENTS AND ACCESSORIES FOUND (CONDITION AND SOURCE):**

- FOUND: 7/8" IRON ROD FOR THE CORNER (CORNER RESTORATION NO. 151).
- FOUND: THE MOSTLY ROTTED REMAINS OF AN OAK STUMP 10" IN DIAMETER BEARS S 1° 30' E \* 5.4 FEET (5" DIAM. SOUTH 4.49 FEET CORNER RESTORATION NO. 151). SET A B.T. TAG ON THE TOP OF THE STUMP.
- FOUND: 3 1/4" BENTON COUNTY BRASS CAP AT THE NORTHWEST CORNER OF THE ANTHONY ROBERTS DLC NO. 55 AS PER CORNER RESTORATION NO. 3915 BEARS S 89° 19' 31" W \* 596.87 FEET (N 89° 56' 15" W 596.84 FEET COUNTY SURVEY 5743).

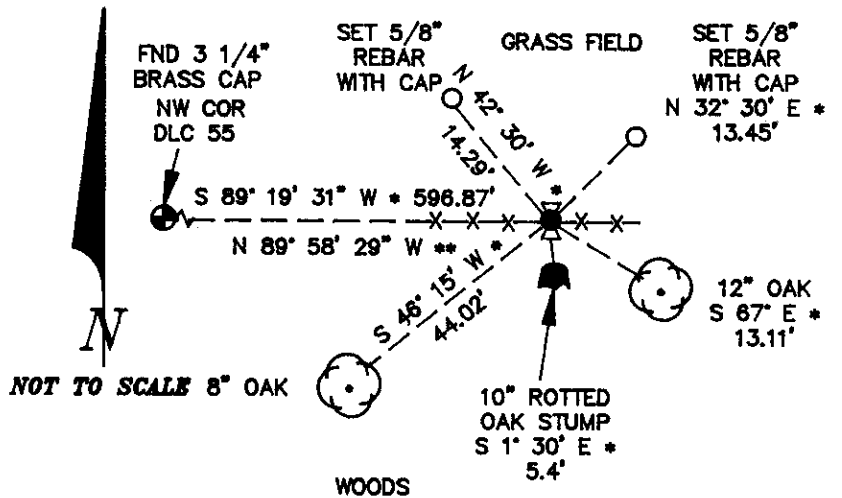
NO OTHER RECORD BEARING OBJECTS WERE RECOVERED.

**MONUMENT DETAIL**



3 1/4" BRASS CAP

**SKETCH**



**MONUMENT SET (PROCEDURES AND DESCRIPTION):**

SET: 2" INSIDE DIAMETER X 36" LONG IRON PIPE WITH A 3 1/4" BENTON COUNTY BRASS CAP, STAMPED AS SHOWN, CENTERED OVER THE RECOVERED 7/8" IRON ROD. SEE COUNTY SURVEY NO. 8513 FOR TIES TO OTHER CORNERS IN THE AREA.

**NEW ACCESSORIES:**

- SET: 5/8" X 30" REBAR WITH A YELLOW PLASTIC CAP MARKED "BENTON COUNTY SURVEYOR", BEARS N 32° 30' E \* 13.45 FEET. THE REBAR IS ON THE NORTHERLY EDGE OF A BRUSH LINE.
- AN OAK 12" IN DIAMETER BEARS S 67° E \* 13.11 FEET, FACED AND SCRIBED "1/4 S33 DLC 55 BT". SET A PK NAIL AND B.C.B.W. IN THE SOUTHWESTERLY BASE. SET A B.T. TAG ON THE NORTHWESTERLY FACE.
- AN OAK 8" IN DIAMETER BEARS S 48° 15' W \* 44.02 FEET, FACED AND SCRIBED "1/4 S32 DLC 55 BT". SET A PK NAIL AND B.C.B.W. IN THE NORTHWESTERLY BASE. SET A B.T. TAG ON THE NORTHEASTERLY FACE.
- SET: 5/8" X 30" REBAR WITH A YELLOW PLASTIC CAP MARKED "BENTON COUNTY SURVEYOR", BEARS N 42° 30' W \* 14.29 FEET. THE REBAR IS ON THE NORTHERLY EDGE OF A BRUSH LINE.

SET: ORANGE FIBERGLASS "SURVEY STAKE" POST 2 FEET NORTHERLY.

**NOTES:**

- \* = COMPASS BEARING
- \*\* = BEARING BASED ON COUNTY SURVEY NO. 8513
- B.C.B.W. IS A BRASS WASHER STAMPED "BENTON COUNTY SURVEYOR". COMPASS DECLINATION IS 20° EAST. ALL MEASURED DISTANCES AND COMPASS BEARINGS ARE TO THE CENTER OF THE OBJECT, UNLESS OTHERWISE NOTED.

THIS RESTORATION WAS PERFORMED AT THE DIRECTION AND APPROVAL OF THE BENTON COUNTY SURVEYOR. *[Signature]*

**FIRM/AGENCY:** BENTON COUNTY SURVEYOR  
**ADDRESS:** 360 S.W. AVERY AVE. CORVALLIS OR. 97333; PH. 757-6821  
**SURVEY CREW:** CURTIS J. LIESENFELT & MARK E. ANDERSON  
**WITNESS:**

**REGISTERED  
PROFESSIONAL  
LAND SURVEYOR**

*Curtis J. Liesenfelt*

**OREGON  
JULY 17, 1988  
CURTIS J. LIESENFELT  
2213**