

CORNER FILE TRACKING

H:\Survey\Corners\Misc\Filetrac.doc

11/23/98

CORNER NUMBER
104300300

STEP	HISTORY()	RESTORATION()
Form Prepared, DB	7/12/04	7/16/04
Field Inspection, DB	7/14/04	7/14/04
Form Checked, DB	8/12/04	8/12/04
Form Edited, DB	8/12/04	8/12/04
Form Signed, DB	8/18/04	8/18/04
GIS Index	7/15/04	7/15/04
Authorize Payment, DB	—	—
Archive Digital Files	8/20/04	8/20/04
Collect Documents	8/20/04	8/20/04
Scanned	8/23/04	8/23/04
Copy For Filming	8/20/04	8/20/04
Filed, DB		
Finish index (count unit)	7/14/04	7/19/04
Filmed (Archived), DB		

(DB) = Entry needed in database (Access).

COMMENTS:

DATE 07/12/2004TOWNSHIP 10 SOUTH, RANGE 4 WEST, WILLAMETTE MERIDIAN; SECTION 20 CORNER SOUTHEAST
DONATION LAND CLAIM NONE CORNER N/A**COMMON CORNER(S):**SW SECTION 21
NW SECTION 28
NE SECTION 29**RECORDS (INFORMATION IN *BOLD ITALICS* IS COUNTY STAFFS' INTERPRETATION OF THE RECORD)**

BASED ON EXTENSIVE RESEARCH AND RECOVERY OF EVIDENCE, THIS OFFICE HAS DETERMINED THAT MOST GENERAL LAND OFFICE SURVEYORS MEASURED TO THE FACE OF BEARING TREES.

- [01] GENERAL LAND OFFICE (GLO) NOTES BY JAMES FREEMAN, D.S., DATED JULY 8, 1852. *SET POST COR. OF SEC. 20, 21, 28, 29. A WHITE OAK 36" DIA. BEARS N50°W, 406 LKS (267.96 FEET). MADE A TRENCH AS PER INSTRUCTONS.*
- [02] COUNTY SURVEY NO. 546 (OLD NO. 49), FIELD NOTES (FIELD BOOK NO. 20 PG. 77), BY W. C. GALLOWAY, C.S., DATED MARCH 13, 1916. *SET GRANITE STONE 12" X 16" X 20" FLAT. OAK 15" DIA. N1°47'E, 2.734 CHS (180.44 FEET). S.E. CONCRETE CORNER OF BARN N77°31'W, 4.625 CHS (305.25 FEET), ON A SLOPE OF 4°50'.*
- [03] CORNER RESTORATION BOOK NO. 1 PG. 104, BY W. C. GALLOWAY, C.S., DATED MARCH 13, 1916. *CORNER TO SEC 20, 21, 28, 29, R4W. SET GRANIT STONE 20" X 16" X 12" FLAT. OAK 15" DIA. BEARS N1°47'E, 2.734 CHS. (180.44 FEET). S.E. CONCRETE COR. OF BARN N77°31'W, 4.625 CHS (305.25 FEET) ON A SLOPE OF 4°50'.*
- [04] CORNER RESTORATION NO. 49. *THIS IS TRANSCRIBED FROM RECORD NO. [03] AND MAY CONTAIN ERRORS AND/OR OMISSIONS.*
- [05] BENTON COUNTY MAP NO. 10-4-00012, BY W. C. GALLOWAY, C.S., DATED MARCH 1916. *STONE 20" X 16" X 12", OAK 15" DIA. N1°47'E, 2.734 CHS. (180.44 FEET). S.E. CONCRETE CORNER OF BARN N77°31'W, 4.608 CHS (304.12 FEET).*
- [06] BENTON COUNTY MAP NO. 10-4-00018, BY W. C. GALLOWAY, C.S., DATED OCTOBER 17, 1927. *STONE 20" X 16" X 12".*
- [07] CORNER RESTORATION BOOK NO. 1 PG. 104, BY W. C. GALLOWAY, C.S., DATED MARCH 13, 1916. *SAME INFORMATION AS RECORD NO. [03], BUT NOTED THAT "STONE HAS BEEN MOVED", DATED 1952.*

NOTES:

THIS IS A MICROSOFT WORD 2000 DOCUMENT NAMED "04300300" CREATED FROM A BOILER PLATE DOCUMENT NAMED "HISTORY", WHICH HAS A STYLESHEET NAMED "CORNER" ATTACHED TO IT.

FIRM/AGENCY: BENTON COUNTY SURVEYOR'S OFFICE
ADDRESS: 360 S.W. AVERY AVE. CORVALLIS OR 97333; PH. 766-6821
RESEARCH BY: DAVID M. DEAN, P.L.S.
DATA ENTRY BY: ADAM CASALEGNO, SURVEY TECH.

BENTON COUNTY CORNER RESTORATION FORM, PAGE 1 OF 2, 104300300R2

SEE CORNER HISTORY FORM FOR RECORDS ETC.

CORNER RESTORATION FIELD BOOK NUMBER 22 PAGE(S) 32

DATE 07/14/2004

TOWNSHIP 10 SOUTH, RANGE 4 WEST, WILLAMETTE MERIDIAN; SECTION 20 CORNER SOUTHEAST

DONATION LAND CLAIM NONE

CORNER N/A

CONDITION REPORT ;

REFERENCED OUT ;

RENEWED XX ;

SURVEYED IN

LOCATION AND COMMENTS:

CORNER IS LOCATED BETWEEN CULTIVATED FIELDS (6' EAST OF PRESENT CULTIVATION LINE) WITH SCATTERED OAK GROVES. TO REACH CORNER FROM THE JUNCTION OF INDEPENDENCE HIGHWAY AND MINT AVENUE (PRIVATE ROAD), TRAVEL WESTERLY ON MINT AVENUE FOR 0.69 MILES TO JUNCTION WITH FARM ROAD ON LEFT; THEN WALK SOUTH FOR 1/4 MILE TO CORNER. CORNER IS GOOD FOR PRE MARKING AND GPS CONTROL.

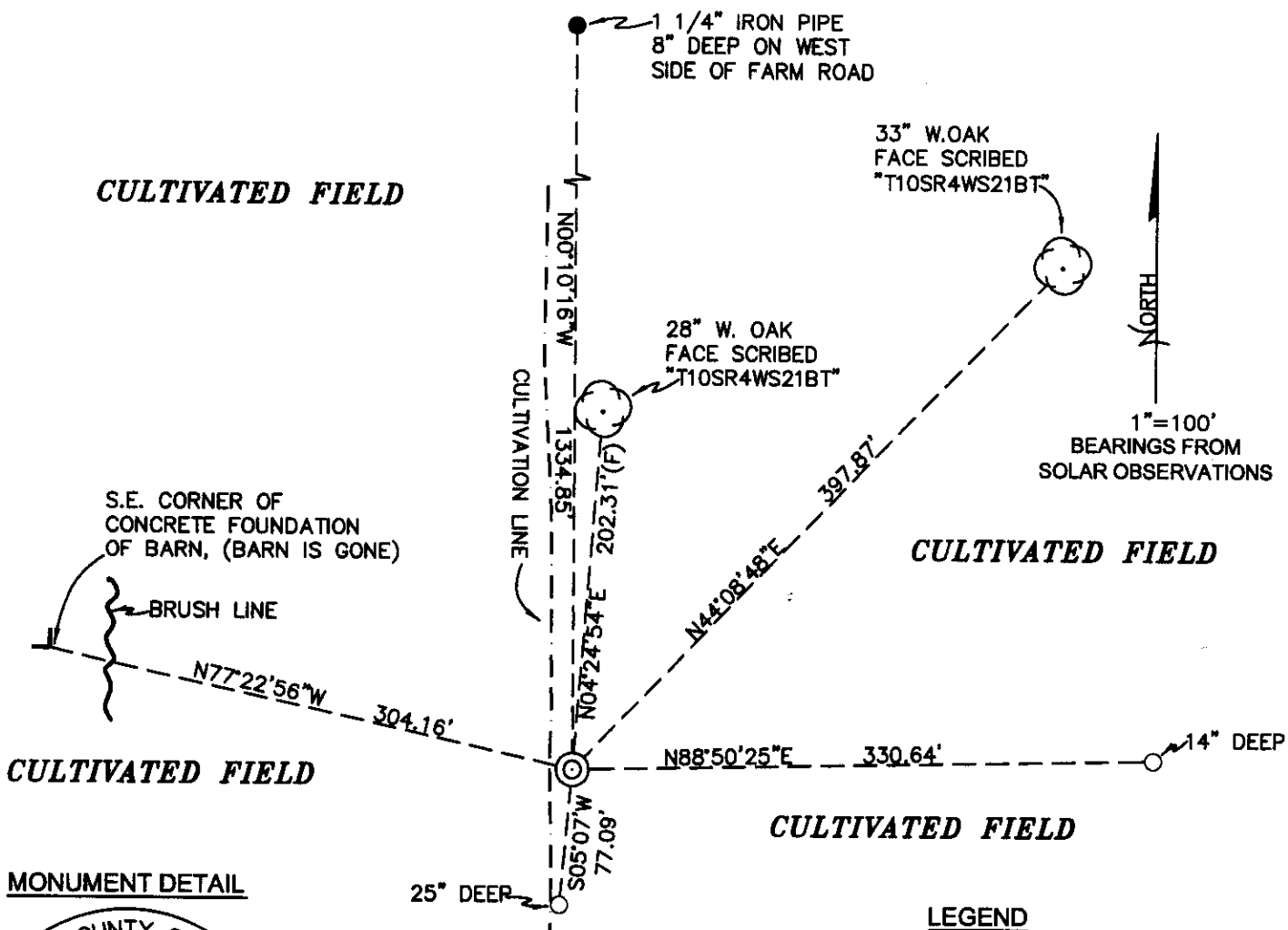
MONUMENTS AND ACCESSORIES FOUND (CONDITION AND SOURCE):

1. FOUND SOUTHEAST CORNER OF CONCRETE FOUNDATION, N77°22'56"W, 304.16 FEET.
(SE CONCRETE CORNER OF BARN, N77°31'W, 304.12 FEET PER RECORDS [02], [03] AND [05]).
2. FOUND 1 1/4" IRON PIPE, 8" BELOW GROUND LEVEL, N00°10'16"W, 1334.85 FEET. IRON PIPE IS LOCATED APROXIMATELY 60 FEET SOUTH OF MINT AVENUE AND ±5 FEET WEST OF A FARM ACCESS ROAD.
(1 1/4" PIPE, N0°13'W, 1334.85 FEET PER RECORD [05]).
(1 1/4" PIPE, N0°20'W, 1334.85 FEET PER RECORD [06]).

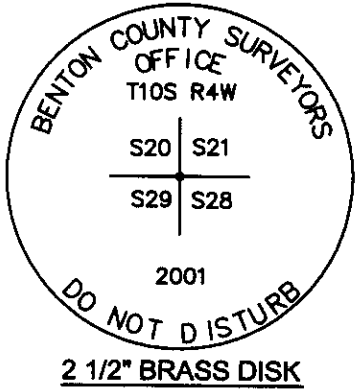
MONUMENT SET (PROCEDURES AND DESCRIPTION):

NO EVIDENCE OF GLO OR COUNTY SURVEYOR'S MONUMENT COULD BE FOUND. GLO AND COUNTY SURVEYOR'S BEARING TREES ARE GONE. POSITION OF CORNER WAS CALCULATED BY DISTANCE/DISTANCE INTERSECTION FROM THE TWO FOUND ACCESSORIES AS NOTED ABOVE.

AT CALCULATED POSITION, SET 5/8" X 24" COPPER WELDED ROD WITH A 2 /2" BRASS DISK ATTACHED TO TOP, 26" BELOW GROUND LEVEL, MARKED AS SHOWN ON PAGE 2 OF 2.



MONUMENT DETAIL



LEGEND

- SET 5/8" X 30" REBAR WITH YELLOW PLASTIC CAP MKD "BENTON COUNTY SURVEYOR"
- FOUND MONUMENT AS NOTED
- (F) MEASUREMENT TO FACE
- (C) MEASUREMENT TO CENTER
- ⊙ GOVERNMENT MONUMENT SET AS SHOWN
- ⊙ BEARING TREE AS NOTED

NEW ACCESSORIES:

1. SET REBAR (SEE LEGEND) 9" BELOW GROUND LEVEL, N88°50'25"E, 330.64 FEET. SET IN THE LOW POINT IN CULTIVATED FIELD.
2. SET REBAR (SEE LEGEND) 10" BELOW GROUND LEVEL, S5°07'W, 77.09 FEET. SET BETWEEN CULTIVATION FIELDS ON THE CULTIVATION LINE.
3. 28" WHITE OAK FACE SCRIBED "T10SR4WS21BT", N4°24'54"E, 202.31 FEET TO FACE. SET ALUMINUM NAIL AND PLASTIC WASHER IN BOTTOM OF BLAZE FOR DISTANCE AND ANGLE MEASUREMENT.
4. 33" WHITE OAK FACE SCRIBED "T10SR4WS21BT", N44°08'48"E, 397.87 FEET TO FACE. SET ALUMINUM NAIL AND PLASTIC WASHER IN BOTTOM OF BLAZE FOR DISTANCE AND ANGLE MEASUREMENT.

NOTES:

COMPASS DECLINATION IS 20° EAST. ALL MEASURED DISTANCES AND BEARINGS ARE TO THE CENTER OF THE OBJECT, UNLESS OTHERWISE NOTED. ALL BEARING TREES ARE PAINTED AND HAVE A B.T. TAG ATTACHED, FACING THE CORNER UNLESS OTHERWISE NOTED. ALL NEW BEARING TREES HAVE A PLASTIC WASHER (STAMPED "BENTON COUNTY SURVEYOR CORNER RESTORATION") ATTACHED (BY ALUMINUM NAIL) TO THE FACE, BELOW THE "BT" FOR DISTANCE AND ANGLE MEASUREMENT UNLESS OTHERWISE NOTED. THE DRAWING IS FROM AUTOCAD RELEASE 2002.

THIS RESTORATION WAS PERFORMED AT THE DIRECTION AND APPROVAL OF THE BENTON COUNTY SURVEYOR, RW

FIRM/AGENCY: BENTON COUNTY SURVEYOR'S OFFICE
 ADDRESS: 360 S.W. AVERY AVE. CORVALLIS OR 97333; PH. 766-6821
 PRESENT: DAVID M. DEAN, P.L.S. AND ADAM CASALEGNO, SURVEY TECH.
 EQUIPMENT: LEICA TCR 1105 TOTAL STATION WITH TDS.

8/18/04 *David M. Dean*

REGISTERED
 PROFESSIONAL
 LAND SURVEYOR

OREGON
 JULY 13, 1984
 DAVID M. DEAN
 2090

RENEWAL DATE: 12/31/05

C.S. # 49. conts

Corner to secs 20, 21, 28, + 29. Tp. 10 S. R. 4 W.
 Set granite stone 20" x 16" x 12" flat. *Cham.* - This stone moved - 1952.
 Oak 15" in dia. bears N. 7° 47' E. 2,734 chs. *check before using*
 S.E. cor. corner of barn N. 77° 31' W. 4,625 chs. slope 4° 50'
 Witnesses A. Widmer, Arthur Dixon, Dudley. Mar. 13, '16

Corner to secs 28, 29, 32, + 33. Tp. 10 S. R. 4 W. July 9, 1940. Set a Pint bottle
 Set lower jaw bone of a horse & other bones. *Set Face under Car axle. Bottle & flat pc. Iron on top of bottle. Mark oak 21" in dia bears S. 0° 25' E. 5,067 chs*
 Oak 8" in dia. bears N. 76° E 2,16 chs. std.
 " 20" " " " S. 8° 20' E. 1,917
 Witnesses A. Widmer, Arthur Dixon. Mar. 13, '16

Int. cor. of Lewis Morris D.L.C. # 70 Tp. 10 S. R. 4 W.
 3/4" gal. pipe set
 Oak 11" in dia. bears N 88° 30' E .599 chs.
 Witness same as above Mar. 13, '16

S.W. cor. of Robert Carter D.L.C. # 44 Tp. 10 S. R. 4 W.
 Set 1" iron pin under granite stone at east side of a pear tree.
 From pipe the int. cor. of cl. # 70 bears South 9,425 chs.
 Witness as above Mar. 13, 1916.

N.W. cor. of Lewis Morris Cl. # 70 Tp. 10 S. R. 4 W.
 1/4 in. pipe set
 Apple tree 7" in dia bears N. 29° E .182 chs. *gone 500*
 Stone 4' x 30" x 24" *18" out of ground* set on north end bears S 7° 10' W. 5,644 chs.
 Witnesses same as above Mar. 13, 1916.

C.S. Road # 373

1/4 sec. cor. between sec. 26, + 27. T. 13 S. R. 6 W.
 Set 3/4" x 2" x 20" iron bar S.W. stump checks.
 Fir 24" in dia bears S 3° E 1,02 chs. std.
 Oak 15" " " " S 96° 15' W .502 chs.
 Witnesses J.B. Martin, Wm Rodgers, Wm Hull, Jr. Mar. 29, '16

#CS. 190 1/4 sec. cor. on the south of sec. 35 (3rd std. parallel) T 13 S. R. 6 W.
 Set 3/4" gal. pipe 41" long. Found both trees down.
 Oak 11" in dia. bears N 70° 30' E 1,060 chs.
 Fir 5" " " " N. 6° 30' E .276
 Witnesses J.B. Martin, Wm Rodgers. Apr. 1, '16

#CS #190 Sec. cor. between sec. 34, + 35 on 3rd std. Parallel. T 13 S. R. 6 W.
 Set qt. bottle (Drove I pin thru) *bottle* New tree down, oak stump std.
 Fir 9" in dia. bears N. 45° E. 2,830 chs.
 Maple 16" " " " S. 68° 50' E 1,640 " east of creek.
 Witnesses as above. Apr. 1, '16

Corner to sections 20, 21, 28, and 29, Twp. 10 S., R. 4 W.

Reestablishment by W. C. Galloway

March 13, 1916

Set granite stone 20" x 16" x 12" flat

Oak 15" in diam bears N 1° 47' E

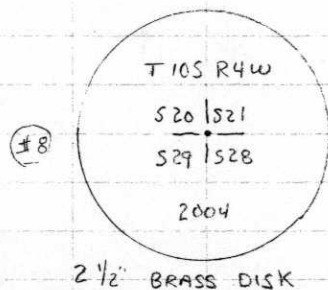
S. E. corner concrete of barn N 77° 31' W 2.734 chains

Witnesses A. Widmer, Arthur Dixon 4.625 chains

104300300

REMONUMENTING 20121
29/28 T10S R4W

NO EVIDENCE OF GLO MONUMENT OR ACCESSORIES.
 STONE PER CS. 546 GONE (PROBABLY PLOWED
 OUT) CS. B.T. PER ~~CS~~ CS 546 GONE.
 Fd SE COR CONC. FOUNDATION (BARN)
 PER CS. 546. Fd 1 1/4" I.P. 8" ↓ (NO-20w
 201225 CH) PER BENTON Co. MAPS 10-4-0012
 & 10-4-0001B. HELD DIST/DIST INTERSECTION
 FROM 1 CONC. FOUNDATION & 1 1/4" I.P.
 FOR CALC. POSITION OF SEC. COR.
 AT CALC. POSITION SET 5/8" x 24" COPPER
 WELDED ROD W/ 2 1/2" BRASS DISK ATTACHED
 TO TOP 26" BELOW GROUND LEVEL
 & MARKED AS SHOWN. N/S CULTIVATION
 BEARS 6" WEST OF CORNER POSITION

CLEAR, WARR
75° (AM.) 29.9" Hg
LEIGH TERRIBS/TDS7/14/04 22/32
D. DEAN
A. COSALEGNO