

104440565

POLK COUNTY CORNER RESTORATION FORM

SECTION 10 TOWNSHIP 10 S RANGE 4 W W.M. BLM ID 440565

DLC _____ CORNER County Line Monument

DATE 9/23/2011 CORNER RESTORATION FIELD BOOK 200-12 PAGE 1

PREVIOUS RENEWALS / SURVEYS, ETC.

CS 15402, 16207; FB 193-04 pg 110
Benton Co Survey 134 (10157)

 RENEWED

 UNRECORDED

 SURVEYED IN

MONUMENT AND ACCESSORIES FOUND (CONDITION AND SOURCE)

I found the 1 1/4" iron pipe cited on Benton Co. Survey 134 (10157) as being on the County Line. Said iron pipe is down 24" and it is 3' west of the east edge of pavement on Buena Vista Rd. Per BCS 134 (10157) said iron pipe is 15.45 Ch= 1019.70' southerly and 11' west of the northeast corner of the Russell CL 69. (Note: the NE Corner of CL 69 is also the North 1/4 Corner of Section 10). I tied said Claim Line holding the monuments at the NE Corner (PC0 RE11495) and SE Corner (BCO RE 869020R2) and found the line to bear S0° 20' 47"E, 4318.60'. The found iron pipe bears S0° 20' 47"E, 1020.02' and S90°W, 11.12' from the NE corner of Claim 69.

MONUMENT SET (PROCEDURES AND DESCRIPTION)

I drove a 2" X 30" iron pipe with a 2 1/2" brass cap over the found iron pipe. I set the new iron pipe and cap in a monument box.

NEW ACCESSORIES

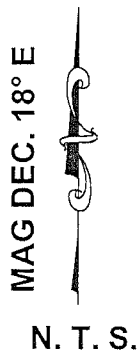
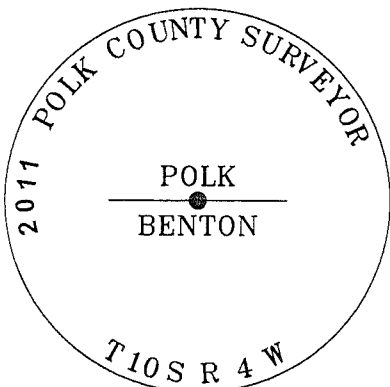
- Power Pole #105803; S89°E, 17.91' to nail and magnet, 2' up on left; set witness tag
- Power Pole #105804; N65°E, 82.73' to nail and magnet, 1' up on left; set witness tag
- 3/4" iron pipe; N89° 35' 37"E, 31.01'; origin unknown
- 1 1/4" iron pipe in west side of ditch; N89°26'55"E, 11.01'; origin unknown
- typical concrete guard post; East 29.9'; the concrete post is 10" X 10" at the base and 7" X 7" at the top and is 36" high. The post is engraved; "Polk", "Benton" and "Co Line".

State Plane Coordinate (ORGN 83/96 (2002) in Int'l Feet)
N= 395479.83 ft
E= 7509988.07 ft

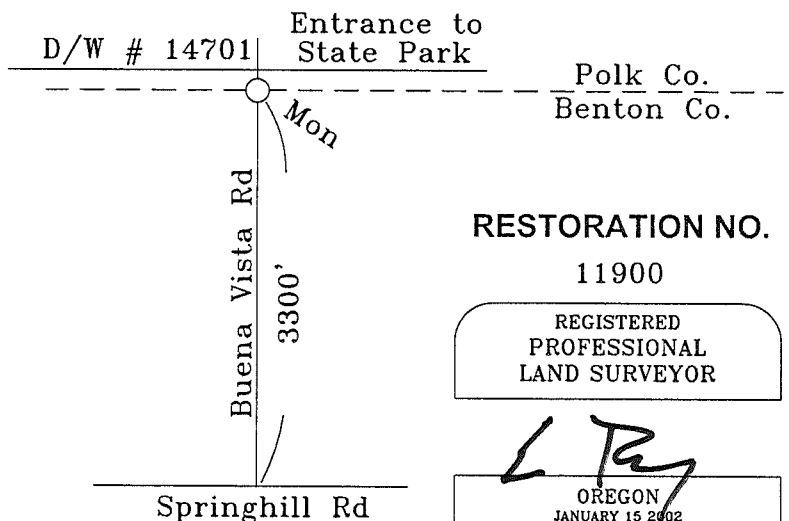
NOTES

The state plane coordinates given for this point are the result of ties made during the survey for county project 1021, point #304.
See project file for more information.

MONUMENT DETAIL



SKETCH



RESTORATION NO.
11900
REGISTERED
PROFESSIONAL
LAND SURVEYOR

[Signature]
OREGON
JANUARY 15 2002
ERIC T BERRY
61392

FIRM / AGENCY

Polk County Surveyors Office
820 S.W. Ash St.
Dallas, Oregon 97338
(503) 623-9287

WITNESS Jim Killian, Roger Ray