

OREGON CORNER RESTORATION FORM

DLC Section 43 Township 10 Range 4

County BENTON Date 7/28/1987

CORNER DESIGNATION



INTERIOR CORNER OF
DLC 43
G. ADKINS

- Condition Report Only
- Not Found
- Renewed
- Unrecorded
- Surveyed In
- Referenced Out

Previous Renewals/Surveys, etc. CORNER REST NO. 77 7/01/1922 AND
01/01/1944 CS 5200

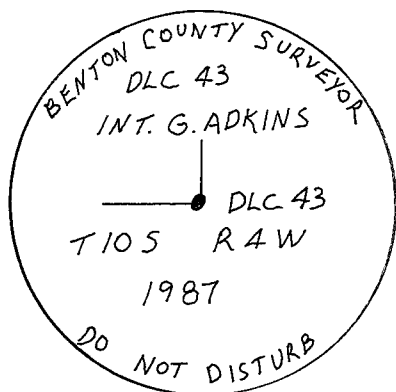
Monument(s) & Accessories Found: (Condition and Source)

FOUND A 1/2" INSIDE DIAMETER IRON PIPE 8" ABOVE SURFACE
NEAR OLD FENCE CORNER

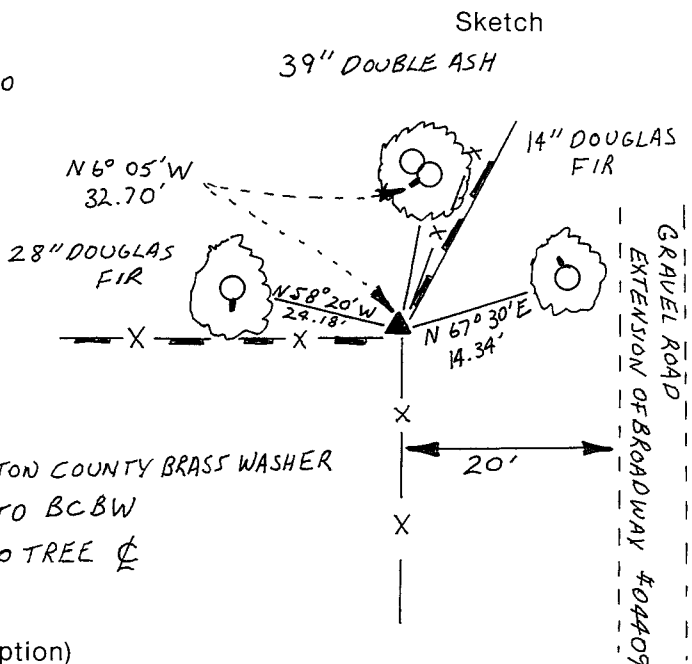
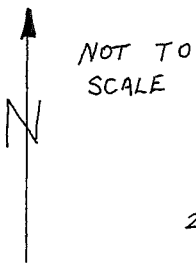
1) FOUND 28" DOUGLAS FIR WITH HEALED FACE BEARING N 58° 20' W
24.18' NAILED A BCBW TO SW BASE

2) FOUND 39" DOUBLE ASH WITH NO HEALED FACE BEARING N 6° 05' W
32.70' NAILED A BCBW TO WEST BASE

Monument Detail



3 1/4" BRASS CAP



NOTES:

BCBW - BENTON COUNTY BRASS WASHER
DISTANCES TO BCBW
BEARINGS TO TREE ☿

Monument Set (Procedures and Description)

SET A 2 1/2" x 36" SQUARE IRON TUBE (TELSPAR SIGN POST)
WITH A 3 1/4" BRASS CAP 6" ABOVE GROUND. DROVE SQUARE TUBE
OVER FOUND 1/2" PIPE. POSTED SURVEY MARKER SIGN 1st EAST

New Accessories 1) 14" DOUGLAS FIR BEARS N 67° 30' E 14.34'
BLAZED AND SCRIBED "CL 43 BT" NAILED A BCBW ONTO NW BASE.

Location & Comments

CORNER IS 20' WEST Compass Declination 20° E
OF A GRAVEL ROAD Firm/Agency BENTON COUNTY
(EXTENSION) OF NW PUBLIC WORKS
BROADWAY # 04409 Address 360 SW AVERY
AND 40' SOUTH OF CORVALLIS OR 97333
CROCKER CREEK Party Chief _____
 Notes ANDY FOSTER
 Witness DAVID EIKLEBERRY

Surveyor's Seal



TOWNSHIP 10 SOUTH, RANGE 4 WEST, WILLAMETTE MERIDIAN; SECTION 25 CORNERDONATION LAND CLAIM GALLATIN ADKINS NO. 43CORNER INTERIOR-NORTHWEST**COMMON CORNER(S):****UPDATES AND REVISIONS:****CORNER RECORDS (PREVIOUS RENEWALS, SURVEYS, ETC.)**

- [01] ORIGINAL GLO SURVEY BY HARVEY GORDON DATED AUGUST OF 1861.
- [02] COUNTY SURVEY NO. 332 BY W.C. GALLOWAY DATED JULY 12, 1912 (FIELD BOOK NO. 12, PAGE 54).
- [03] OLD CORNER RESTORATION BOOK NO. 1 PAGE 40 BY W.C. GALLOWAY DATED JULY 12, 1912.
- [04] CORNER RESTORATION NO. 77 BY W.C. GALLOWAY DATED JULY OF 1912.
- [05] MAP NO. 10-4-00016 BY W.C. GALLOWAY DATED APRIL 28, 1920.
- [06] MAP NO. 10-4-00015 BY BENTON COUNTY SURVEYOR'S OFFICE (NO DATE GIVEN).
- [07] MAP NO. 10-4-00014 BY W.C. GALLOWAY DATED MARCH 8, 1921.
- [08] COUNTY SURVEY NO. 1662 BY BENTON COUNTY SURVEYOR'S OFFICE DATED APRIL 3, 1944.
- [09] OLD CORNER RESTORATION BOOK NO. 1 PAGE 40 BY BENTON COUNTY SURVEYOR'S OFFICE DATED 1944.
- [10] CORNER RESTORATION NO. 77 BY W.C. GALLOWAY DATED 1944.
- [11] COUNTY SURVEY NO. 1707 BY CURTIS C. HANSON DATED FEBRUARY 15, 1945.
- [12] COUNTY SURVEY NO. 1945 BY OTTO H. MEYER DATED SEPTEMBER 27, 1947.
- [13] COUNTY SURVEY NO. 4364 BY CURTIS C. HANSON DATED MARCH OF 1967.
- [14] COUNTY SURVEY NO. 4487 BY AUGUST GIERING DATED DECEMBER 29, 1967.
- [15] COUNTY SURVEY NO. 4512 BY JOHN GANNON DATED MARCH 23, 1968.
- [16] COUNTY SURVEY NO. 4537 BY JOHN GANNON DATED JUNE 15, 1968.
- [17] COUNTY SURVEY NO. 5200 BY DAVID SCHMIDT DATED FEBRUARY 21, 1972.
- [18] COUNTY SURVEY NO. 5587 BY VERLE MOORE DATED NOVEMBER 7, 1973.
- [19] COUNTY SURVEY NO. 5700 BY VERLE MOORE DATED APRIL 23, 1974.
- [20] COUNTY SURVEY NO. 7535 BY DANNA INGRAM DATED JUNE 30, 1983.
- [21] CORNER RESTORATION NO. 3472 BY DANNA INGRAM DATED JULY 28, 1987.

COMMENTS/LOCATION/ETC:

RECORD [04] AND [10] ARE TRANSCRIBED COPIES OF RECORDS [03] AND [09] AND MAY CONTAIN ERRORS AND OMISSIONS.

ON JUNE 6, 1992 CURT LIESENFELT AND MARK ANDERSON VISITED THE CORNER AND FOUND IT TO BE AS PER RECORD [21].

NOTES:

THIS IS A MICROSOFT WORD (VERSION 5.0) DOCUMENT NAMED "04843050" CREATED FROM A BOILER PLATE DOCUMENT NAMED "HISTORY", WHICH HAS A STYLESHEET NAMED "CORNER" ATTACHED TO IT.

FIRM/AGENCY: BENTON COUNTY SURVEYOR'S OFFICE

ADDRESS: 360 S.W. AVERY AVE. CORVALLIS OR 97333; PH. 757-6821

RESEARCH BY: CURTIS J. LIESENFELT/MARK E. ANDERSON

DATA ENTRY BY: MARK E. ANDERSON

Interior corner of Gallatin Adkins D L C 43, Twp 10 S 4 W

77

Reestablishment by W. C. Galloway

July 1912

Set $\frac{1}{2}$ " pipe N . Oak stump standing
Oak 6" in diam bears S 88° W .66 chains(standing)
Fir 20" in diam bears N. 67° W .04 chains
Witnesses Charles Collins, Van Kemp, Prettyman

Replacement by W. C. Galloway
North Oak down

1944

Oak down
Fir rotten
Fir 18" in diam bears N. 57° W .370 chains
Double Ash 33" in diam bears N. 4° 40' W .485 chains