

CORNER FILE TRACKING

H:\Survey\Corners\Misc\Filetrac.doc

11/23/98

CORNER NUMBER

104850020

STEP	HISTORY()	RESTORATION()
Form Prepared, DB	6/07/01	—
Field Inspection, DB	6/7/01	6/7/02
Form Checked, DB	6/25/01	6/25/01
Form Edited, DB	6/28/01	6/28/01
Form Signed, DB	—	6/28/01
Authorize Payment, DB	—	—
Archive Digital Files		
Collect Documents	7/3/01	7/3/01
Scanned	7/13/01	7/13/01
Copy For Filming		
Filed, DB		
Finish index (count unit)		
Filmed (Archived), DB		

(DB) = Entry needed in database (Access).

COMMENTS:

6/28/01 - NEED COPY OF FIELD NOTES + COMPS. ✓

OLD C.S. 205

CORNER RESEARCH

AUTHOR: DD
TOWNSHIP: 10-4
CORNER: J Smiley Carter
DLC # 50

CORNER NO. 104850020
DATE 6/6/01

SURVEYS:

- 0) (423) (836) ^{NOTED} 227
- 1) (349) (343)
- 2) (367)
- 3)
- 4) (809)
- 5)
- 6)
- 7) 956
- 8)
- 9) 823 - 1974 NEWELL/GOSSETT
- 10)
- 11)
- 12)
- 13)
- 14)
- 15)
- 16)
- 17)

NOTES

ANDREW PORTER SURVEYS:

SURVEY FIELD BOOKS: 11-73 41-25 32-19 - CS 836
41-35

GALLOWAY HARDCOPIES:

10-4-6 ~~10-4-8~~ ~~10-4-9~~

SUBDIVISIONS:

N/A

PARTITION'S:

N/A

COUNTY ROAD'S:

13470 - (SPRING HILL) RT 47

OTHER ROADS AND HWY'S:

CORNER REST. BK. 1: 1-214

OTHER RESTORATIONS: (97)

BPA: N/A

RAIL ROADS: N/A

GLO NOTES:

MISC. RECORDS:

Geo. Harris
Gerald Harris
Oct 5, 1936

Witnesses as
above except
Geo. Harris
Oct. 6, 1936

1/214 " " " " " " 1466 1077. 217 " " " " " " S. 29° W. .80 " " Std.
" " " " " " 36" " " " " " " N. 33° W. 1.41 " " lying down.

1/4 Section Corner between Sections 31 T. 11-6 & 6 T-12-6
Set a 3/4"x20" bolt set from an
Oak 10" in dia. bears S. 28° W. .35 std. green (found BTB first ^{mp})
Marked fir 22" in dia. bears N. 27° E. .495
" " 14" " " " " S. 86° W. .433

Witnesses
R.T. Stewart
Gerald Harris
Oct. 9, 1936

1/4 Sec. Corner between Sections 31 T 11-6 & 36 T 11-7
Set a 3/4" iron rod 56" long from (we saw a doe just before getting to corner)
Fir 80" N. 4° E. .70 chs. burned down. (Maple gone)
Mkd. a fir 28" in dia. bears N. 66° E. .487
" a W. " 4" " " " " S. 31° 45' E. .434
" V. Maple 15" " " " " " N. 85° 30' W. .360
" fir 17" " " " " " N. 88° 30' W. .989

C.S. 205
W.C. Galloway
Rudolph J. Stewart
Adrian Seits
Sept. 1937.

S.E. corner of Smiley Carter D.L.C. 50 T 10-4
Set a 1 1/4" shaft set from orig. trees.
Marked Fir 22" in dia. bears N. 75° E. .230 (mark for measure N.)
" " 22" " " " " S. 20° E. .198 (marked on N. for measure)
" Forked Oak 24" " " " " " N. 86° 30' W. 1.104 (spike on N.)

C.S. #131
Witness
Rudolph Stewart
by W.C. Galloway
Jan. 1936

Corner to Secs. 24, 25, 19 & 30 T. 10 S Rs. 4 & 5 W.
Set an angle iron 46" long from orig. trees.
Oak 20" in dia. bears S. 58° 20' E. 2.20 chs. std.
" 18" " " " " " N. 41° 30' W. 2.13

C.S. #337
Oct. 13, 1937

Corner to Sections 28, 29, 32 & 33 T 10-5
Set a 3/4" Galv.

②

97

S. E. corner of Smiley Carter DLC 50, Twp. 10-4

Reestablishment by W. C. Galloway

/September 1937

Set a $1\frac{1}{4}$ " shaft, set from original trees

Fir 22" in diam bears N 75° E

.230 chains

Fir 22" in diam bears S 20° E

.198 chains

Oak 24" in diam bears N 86° 30' W

1.104 chains

List Points Report

06/26/2001 16:54

File> s:\survey corners\corners\t-10\04850020.crd

Job Description>

Job Number> 0.000 Job Date> 2001.0608

PointNo.	Northing(Y)	Easting(X)	Elev(Z)	Description
1	5000.000	5000.000	100.000	START
2	5371.553	5043.025	103.564	PK
3	5010.812	5009.567	98.549	REBAR
4	4981.347	5020.124	99.064	REBAR
5	4986.031	4986.792	98.183	REBAR
6	4998.310	4984.571	104.736	PP
7	4998.927	4984.096	100.464	PP
8	5009.099	4987.627	100.527	REBAR
9	5002.776	5003.373	99.564	3/4 IR
15	4298.172	4826.315	100.000	CALC
16	4297.924	4826.003	101.285	3/4 IP
17	5454.743	4999.759	95.739	1 1/4 IP
18	4998.265	4984.155	0.000	

Number of points listed> 13

DATE 06/07/2001TOWNSHIP 10 SOUTH, RANGE 4 WEST, WILLAMETTE MERIDIAN; SECTION 14 CORNER N/A
DONATION LAND CLAIM SMILEY CARTER NO. 50 CORNER SOUTHEAST**COMMON CORNER(S):**

NONE

RECORDS (INFORMATION IN BOLD ITALICS IS COUNTY STAFFS' INTERPRETATION OF THE RECORD)

- [01] ORIGINAL GLO SURVEY BY MADDEN VANDERPOOL, D.S. DATED OCTOBER 11, 1853. *SET POST WITH 3 OAK BEARING TREES.*
- [02] COUNTY SURVEY NO. 423 NOTES (FIELD BOOK 11, PAGE 75) BY BURT WILKES, D.C.S., DATED FEBRUARY 14, 1914. *NO MONUMENT DESCRIPTION.*
- [03] COUNTY SURVEY NO. 1343 BY BURT WILKES, D.C.S., DATED FEBRUARY AND MARCH 1914. *NO MONUMENT DESCRIPTION.*
- [04] BENTON COUNTY MAP NO. 10-4-00006 BY BURT WILKES, D.C.S., DATED FEBRUARY AND MARCH 1914. *1 1/4" SHAFT WITH 2 FIR AND 1 OAK COUNTY SURVEYOR BEARING TREES (C.S.B.T.).*
- [05] COUNTY SURVEY NO. 9633 BY NEWELL GOSSETT & WALSH, ENGINEERS, DATED NOVEMBER 1914 AND COMPILED FROM SURVEY MADE BY BURT WILKES, D.C.S. AND GOVERNMENT RECORDS. *NO MONUMENT DESCRIPTION.*
- [06] COUNTY SURVEY NO. 836 FIELD NOTES (FIELD BOOK 32, PAGE 19) BY W. C. WALTER LARSON, D.C.S., DATED JULY 14, 1922. *NO MONUMENT DESCRIPTION.*
- [07] COUNTY SURVEY NO. 1343 NOTES (FIELD BOOK 41, PAGE 27) BY W. C. GALLOWAY, C.S., DATED SEPTEMBER 1, 1937. *FOUND STAKE AND 1 1/4" SHAFT WITH 2 FIR AND 1 OAK BEARING TREES.*
- [08] CORNER RESTORATION BOOK NO. 1, PAGE 214 BY W. C. GALLOWAY, C.S., DATED SEPTEMBER 1937. *SET 1 1/4" SHAFT FROM ORIGINAL BEARING TREES. MARKED 2 FIR AND 1 OAK C.S.B.T.*
- [09] CORNER RESTORATION NO. 97. *THIS IS A TRANSCRIBED COPY OF RECORD [08] AND MAY CONTAIN ERRORS AND OMISSIONS.*
- [10] COUNTY SURVEY NO. 1349 NOTES (FIELD BOOK 41, PAGE 35) BY W. C. GALLOWAY, C.S., NO DATE GIVEN. *NO MONUMENT DESCRIPTION.*
- [11] COUNTY SURVEY NO. 2354 BY CURTIS C. HANSON, C.S., DATED FEBRUARY 12, 1952. *NO MONUMENT DESCRIPTION.*
- [12] COUNTY SURVEY NO. 2367 BY CURTIS C. HANSON, C.S., DATED MARCH 20, 1952. *1 1/4" SHAFT.*
- [13] COUNTY SURVEY NO. 2879 BY RICHARD W. FAIL, P.L.S., DATED FEBRUARY 2, 1957. *NO MONUMENT DESCRIPTION.*
- [14] COUNTY SURVEY NO. 3197 BY CURTIS C. HANSON, C.S., DATED MARCH 2, 1959. *NO MONUMENT DESCRIPTION.*
- [15] COUNTY SURVEY NO. 4809 BY VERLE C. MOORE, C.S., DATED JULY 11, 1969. *FOUND 1 1/4" SHAFT.*

COMMENTS/LOCATION/ETC:**NOTES:**

THIS IS A MICROSOFT WORD 97 DOCUMENT NAMED "104850020" CREATED FROM A BOILER PLATE DOCUMENT NAMED "HISTORY", WHICH HAS A STYLESHEET NAMED "CORNER" ATTACHED TO IT.

FIRM/AGENCY: BENTON COUNTY SURVEYOR'S OFFICE
ADDRESS: 360 S.W. AVERY AVE. CORVALLIS OR 97333; PH. 766-6821
RESEARCH BY: DAVID M. DEAN, P.L.S.
DATA ENTRY BY: DEAN

BENTON COUNTY CORNER RESTORATION FORM, PAGE 1 OF 2, 104850020R2
SEE CORNER HISTORY FORM FOR RECORDS ETC.

CORNER RESTORATION FIELD BOOK NUMBER 20 PAGE(S) 21 DATE 06/08/20001
TOWNSHIP 10 SOUTH, RANGE 4 WEST, WILLAMETTE MERIDIAN; SECTION 14 CORNER NONE
DONATION LAND CLAIM SMILEY CARTER NO. 50 CORNER SOUTHEAST
CONDITION REPORT ____; REFERENCED OUT ____; RENEWED XX; SURVEYED IN ____

LOCATION AND COMMENTS:

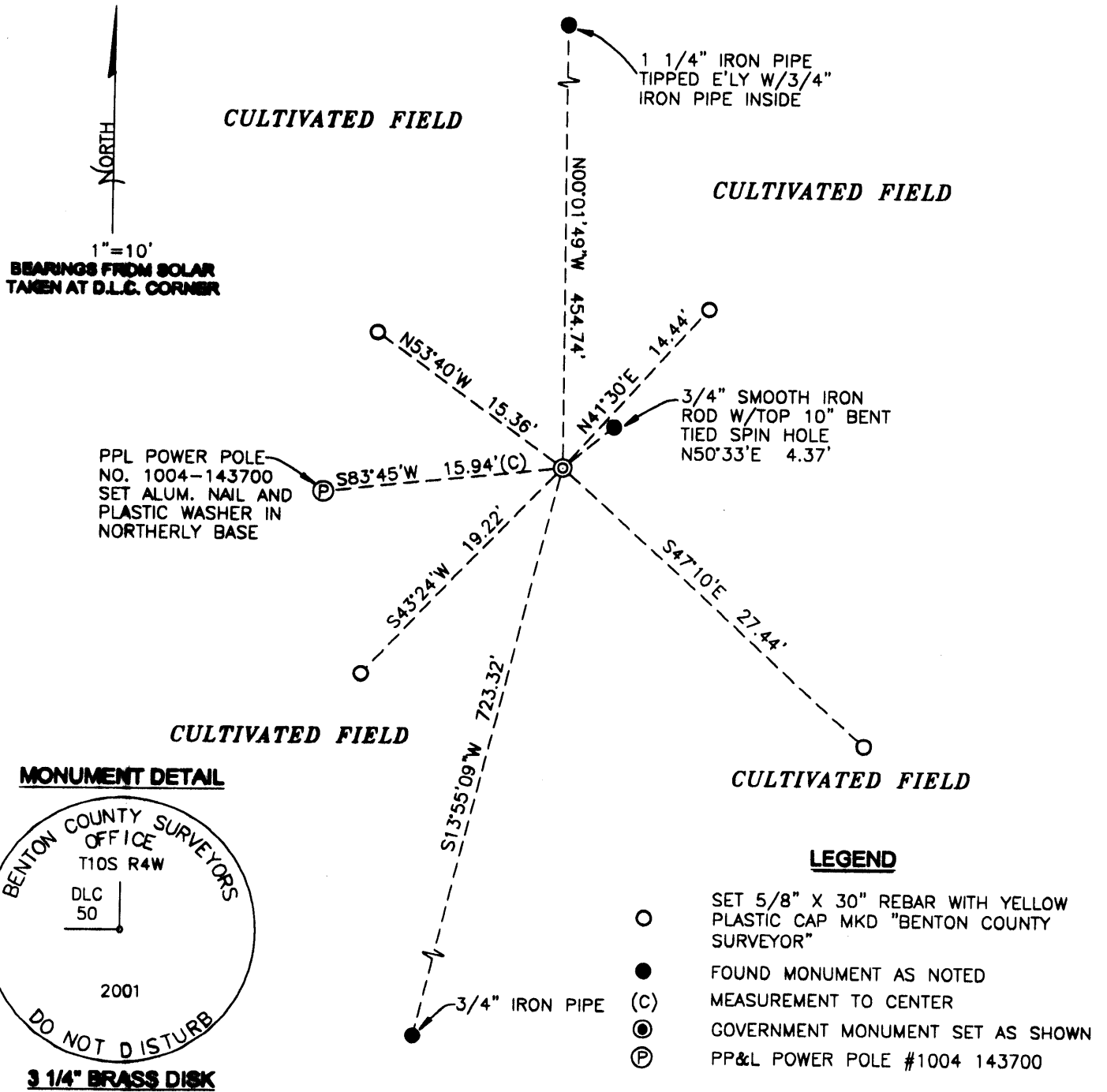
CORNER IS LOCATED IN A LOWLAND CULTIVATED AREA APPROXIMATELY 1/4 MILE WEST OF THE WILLAMETTE RIVER. TO REACH CORNER FROM THE JUNCTION OF GLENWOOD ROAD AND SPRING HILL ROAD IN THE NORTHWEST 1/4 OF SECTION 23, T10S, R4W, TRAVEL NORTHERLY ON SPRING HILL ROAD FOR 0.92 MILE TO A DRIVEWAY ON THE RIGHT; THEN EAST ON SAID DRIVEWAY FOR ±550 FEET TO HOUSE AND PARK; THEN EAST ON FOOT FOR ± 27 CHAINS TO CORNER AT THE JUCTION OF THREE CULTIVATED FIELDS.

MONUMENTS AND ACCESSORIES FOUND (CONDITION AND SOURCE):

01. FOUND 1 1/4" X 21 1/2" SOLID STEEL SHAFT, 9" BELOW GROUND LEVEL AND TIPPED SOUTHERLY ±0.15 FEET. REPLUMED TO VERTICAL AND HELD THAT POSITION FOR THE CORNER.
(FOUND 1 1/4" SHAFT PER RECORD [07]).
(SET 1 1/4" SHAFT PER RECORD [08]).
(1 1/4" SHAFT PER RECORDS [12] AND [15]).
02. FOUND 3/4" X 55" SMOOTH IRON ROD, 18" ABOVE GROUND LEVEL, WITH THE TOP 10" BENT, N50°33'E 4.37 FEET. PULLED IRON ROD, TIED SPIN HOLE AND RESET AS FOUND. SOURCE OF THIS IRON ROD IS UNKNOWN.
03. FOUND 1 1/4" IRON PIPE WITH A BROKEN OFF 3/4" IRON PIPE INSIDE, 2" BELOW GROUND LEVEL, N0°01'49"W, 454.74 FEET. THIS MONUMENT WAS TIPPED ±0.6 FEET SOUTHEASTERLY BY A D. FIR (NOW A ROTTED STUMP) GROWING ON THE WEST SIDE OF MONUMENT. TIED THE TOP OF IRON PIPE AS FOUND. FOUND TWO PIECES (24" AND 7" LONG) OF 3/4" PIPE LAYING ON THE NORTHERLY SIDE OF THE 1 1/4" IRON PIPE.
(1 1/4" PIPE N0°02'W, 455.07 FEET PER RECORD [04]).
(SET PIPE N0°03'W, 455.10 FEET (CALCULATED FROM NOTES) PER RECORD [07]).
(1 1/4" G.I.P. NORTH, 455.07 (CALCULATED FROM NOTES) PER RECORD [10]).
(1 1/4" I. PIPE PER RECORD [15]).
04. FOUND 3/4" IRON PIPE, 12" BELOW GROUND LEVEL, S13°55'09"W, 723.32 FEET.
(SET 3/4" I. PIPE S13°54'W, 723.0 FEET PER RECORD [15]).

MONUMENT SET (PROCEDURES AND DESCRIPTION):

HELD THE 1 1/4" X 21 1/2" IRON SHAFT (AFTER PLUMBING TO VERTICAL POSITION) FOR THE CORNER POSITION. REMOVED SAID SHAFT AND SET (IN SAME X,Y POSITION) A 2" INSIDED DIAMETER X 36" GALVANIZED IRON PIPE WITH A 3 1/4" BRASS DISK CEMENTED ON TOP, 13" BELOW GROUND LEVEL, MARKED AS SHOWN, FOR NEW CORNER MONUMENT. BURIED SAID SHAFT ON THE WEST SIDE OF NEW MONUMENT AND 15" BELOW GROUND LEVEL.



NEW ACCESSORIES:

01. PACIFIC POWER AND LIGHT POWER POLE NO. 1004-143700 BEARS S83°45'W, 15.94 FEET. SET PK NAIL AND PLASTIC WASHER IN THE NORTHERLY BASE FOR DISTANCE MEASUREMENT.
02. SET REBAR (SEE NOTES) 18" BELOW GROUND LEVEL, N41°30'E, 14.44 FEET.
03. SET REBAR (SEE NOTES) 12" BELOW GROUND LEVEL, S47°10'E, 27.44 FEET.
04. SET REBAR (SEE NOTES) 13" BELOW GROUND LEVEL, S43°24'W, 19.22 FEET.
05. SET REBAR (SEE NOTES) 14" BELOW GROUND LEVEL, N53°40'W, 15.36 FEET.

NOTES:

COMPASS DECLINATION IS 20° EAST. ALL MEASURED DISTANCES AND BEARINGS ARE TO THE CENTER OF THE OBJECT, UNLESS OTHERWISE NOTED. ALL BEARING TREES ARE PAINTED AND HAVE A B.T. TAG ATTACHED, FACING THE CORNER UNLESS OTHERWISE NOTED. ALL NEW BEARING TREES HAVE A PLASTIC WASHER (STAMPED "BENTON COUNTY SURVEYOR CORNER RESTORATION") ATTACHED (BY ALUMINUM NAIL) TO THE FACE, BELOW THE "BT" FOR DISTANCE AND ANGLE MEASUREMENT UNLESS OTHERWISE NOTED. ALL SET REBAR ARE 5/8" X 30" AND HAVE A YELLOW PLASTIC CAP (MARKED "BENTON COUNTY SURVEYOR'S OFFICE") ATTACHED TO THE TOP.

THIS DOCUMENT WAS NAMED AND CREATED IN A MANNER SIMILAR TO THE HISTORY FORM. THE NAME OF THE BOILER PLATE IS "MONUMENT". THE SKETCH IS FROM AUTOCAD RELEASE 14.

THIS RESTORATION WAS PERFORMED AT THE DIRECTION AND APPROVAL OF THE BENTON COUNTY/DEPUTY COUNTY SURVEYOR. lw

FIRM/AGENCY: BENTON COUNTY SURVEYOR'S OFFICE
ADDRESS: 360 S.W. AVERY AVE. CORVALLIS OR 97333; PH. 766-6821
PRESENT: DAVID M. DEAN, P.L.S. AND RAYMOND WILSON, C.S.

REGISTERED
PROFESSIONAL
LAND SURVEYOR

David M. Dean 6/28/01

OREGON
JULY 13, 1984
DAVID M. DEAN
2090

RENEWAL DATE: 12/31/01