

CORNER FILE TRACKING

H:\Survey\Corners\Misc\Filetrac.doc

11/23/98

CORNER NUMBER
104850040

STEP	HISTORY()	RESTORATION()
Form Prepared, DB	12/31/2003	8/10/2004
Field Inspection, DB	8/9/2004	8/9/2004
Form Checked, DB	9/1/04	9/1/04
Form Edited, DB	9/2/04	9/2/04
Form Signed, DB	9/3/04	9/3/04
GIS Index	8/10/2004	8/10/2004
Authorize Payment, DB		
Archive Digital Files	9/3/04	9/3/04
Collect Documents	9/3/04	9/3/04
Scanned	9/7/04	9/7/04
Copy For Filming	9/3/04	9/3/04
Filed, DB		
Finish index (count unit)	8/9/2004	8/9/2004
Filmed (Archived), DB		

(DB) = Entry needed in database (Access).

COMMENTS:

DATE 12/31/2003

TOWNSHIP 10 SOUTH, RANGE 04 WEST, WILLAMETTE MERIDIAN; SECTION 10 CORNER N/A
DONATION LAND CLAIM SMILEY CARTER NO. 50 CORNER WEST-NORTHWEST

COMMON CORNER(S):

NONE

RECORDS (INFORMATION IN BOLD ITALICS IS COUNTY STAFFS' INTERPRETATION OF THE RECORD)

BASED ON EXTENSIVE RESEARCH AND RECOVERY OF EVIDENCE, THIS OFFICE HAS DETERMINED THAT MOST GENERAL LAND OFFICE SURVEYORS MEASURED TO THE FACE OF BEARING TREES.

- [01] GENERAL LAND OFFICE (GLO) NOTES FOR THE SMILEY CARTER DONATION LAND CLAIM (DLC) NO. 50 BY M. VANDERPOOL, D.S., DATED OCTOBER 11, 1853. **DROVE A CHARED STAKE AND SET A POST AROUND WHICH RAISED A MOUND WITH A TRENCH. MARKED A 12" ASH S74°E 361 LKS. (238.26 FEET).**
- [02] COUNTY SURVEY NO. 609 (OLD NO. 262) FIELD NOTES (FIELDBOOK 23, PAGE 35) BY W. C. GALLOWAY, C.S., DATED OCTOBER 22, 1917. **REESTABLISH CORNER. SET QUART BOTTLE, 5" BELOW SURFACE. BOARD SOUTH 15LKS. (9.90 FEET).**
- [03] CORNER RESTORATION BOOK NO. 1, PAGE 127 BY W. C. GALLOWAY, C.S., DATED OCTOBER 22, 1917. **SET QUART BOTTLE, 5" BELOW SURFACE. NAIL IN TOP OF BOTTOM BOARD BEARS SOUTH 15 LKS. (9.90 FEET). 1/2" PIPE ON LINE WEST 2.525 CHS. (166.65 FEET). STONE AT SE CORNER OF RUSSELL CL. BEARS EAST 15.77 CHS. (1040.82 FEET).**
- [04] CORNER RE STORATION NO. 95. **TRANSCRIBED FROM RECORD [03] AND MAY CONTAIN ERRORS AND/OR OMISSIONS.**
- [05] BENTON COUNTY MAP NO 10-4-00006 PLATTED BAY BURT WILKES, D.C.S., DATED FEBRUARY/MARCH 1914. **BOTTLE.**
- [06] BENTON COUNTY SURVEY NO. 10-4-00005 (OLD NO. 262), BY W.C. GALLOWAY, C.S., DATED OCTOBER – NOVEMBER 1917. **QUART BOTTLE 5" BELOW SURFACE.**
- [07] COUNTY SURVEY NO. 2765 BY RICHARD FAIL, L.S., DATED APRIL 13, 1956. **FOUND BOTTLE.**
- [08] COUNTY SURVEY NO. 3057 BY CURTIS HANSON, C.S., DATED JUNE 11, 1958. **FOUND QUART BOTTLE, 6" BELOW SURFACE.**

NOTES:

THIS IS A MICROSOFT WORD 2000 DOCUMENT NAMED "048500404" CREATED FROM A BOILER PLATE DOCUMENT NAMED "HISTORY", WHICH HAS A STYLESHEET NAMED "CORNER" ATTACHED TO IT.

FIRM/AGENCY: BENTON COUNTY SURVEYOR'S OFFICE
ADDRESS: 360 S.W. AVERY AVE. CORVALLIS OR 97333; PH. 766-6821
RESEARCH BY: BERNARD S. ALTENBACH, ENGINEER/SURVEY TECH.
DATA ENTRY BY: BSA

BENTON COUNTY CORNER RESTORATION FORM, PAGE 1 OF 2, 104850040R2**SEE CORNER HISTORY FORM FOR RECORDS ETC.**

CORNER RESTORATION FIELD BOOK NUMBER 22 PAGE(S) 42 DATE 08/10/2004
TOWNSHIP 10 SOUTH, RANGE 4 WEST, WILLAMETTE MERIDIAN; SECTION 10 CORNER N/A
DONATION LAND CLAIM SMILEY CARTER NO. 50 CORNER W. N.W.
CONDITION REPORT ; REFERENCED OUT ; RENEWED XX; SURVEYED IN

LOCATION AND COMMENTS:

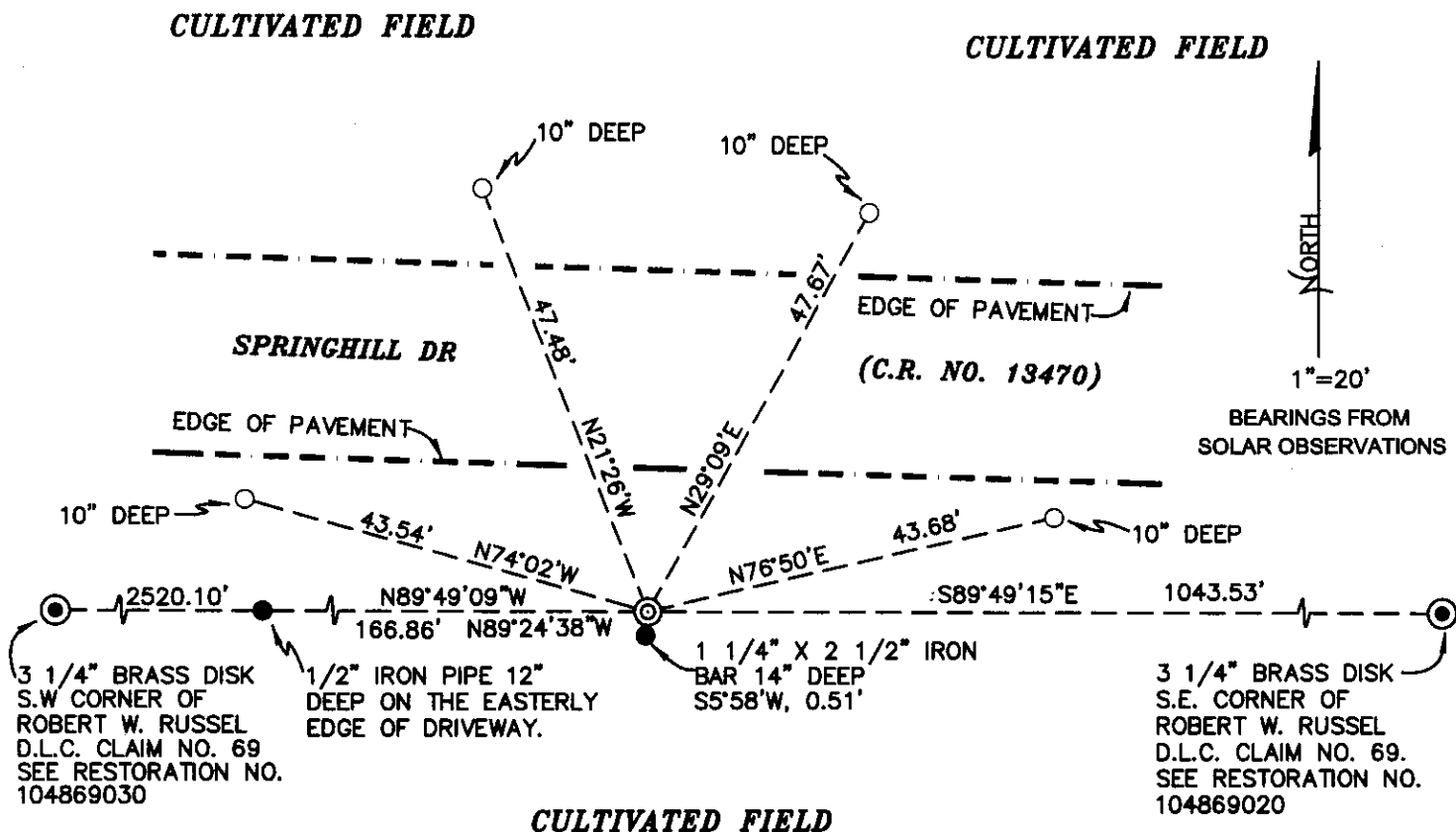
CORNER IS LOCATED APPROXIMATELY 20 FEET SOUTH OF SPRINGHILL DRIVE IN CULTIVATED FIELD. TO LOCATE CORNER FROM THE JUNCTION OF BUENA VISTA ROAD AND SPRINGHILL DRIVE. TRAVEL WESTERLY ON SPRINGHILL DRIVE FOR .20 MILES, CORNER IS 22" UNDER GROUND SURFACE. CORNER IS GOOD FOR PREMARKING AND GPS CONTROL.

MONUMENTS AND ACCESSORIES FOUND (CONDITION AND SOURCE):

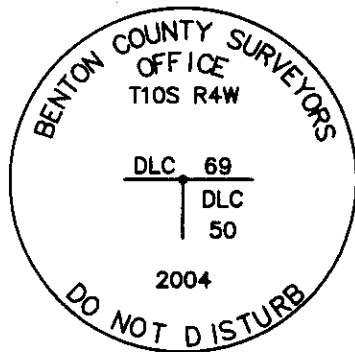
1. FOUND QUART BOTTLE 15" DEEP IN CULTIVATION FIELD FOR CORNER POSITION.
(SET QUART BOTTLE 5" BELOW SURFACE PER RECORD [02] AND [03]).
(BOTTLE PER RECORD [05]).
(QUART BOTTLE 5" BELOW SURFACE PER RECORD [06]).
(FOUND BOTTLE PER RECORD [07]).
(FOUND QUART BOTTLE 6" BELOW SURFACE PER RECORD [08]).
2. FOUND 1 1/4" X 2 1/2" IRON BAR 14" DEEP, S5°58'28"W, 0.51 FEET FROM BOTTLE.
(ORIGIN UNKNOWN).
3. FOUND 1/2" IRON PIPE 12" DEEP, N89°24'38"W, 166.86'.
(SET 1/2" GALVANIZED PIPE 12" DEEP PER RECORD [02]).
(1/2" IRON PIPE, N89°48'E, 166.32 FEET FROM BOTTLE PER RECORD [05]).
(1/2" PIPE N89°56'E, 166.65 FEET PER RECORD [06]).
4. FOUND 3 1/4" BRASS DISK AT THE S.E. CORNER OF ROBERT W. RUSSEL D.L.C. CLAIM NO. 69, S89°49'15"E, 1043.53 FEET.
(SEE RESTORATION NO. 104869020).
(STONE AT S.E. CORNER OF RUSSEL CLAIM EAST 1040.82 FEET PER RECORD [02] AND [03]).
(STONE S89°48'E, 1042.80 FEET PER RECORD [05]).
(STONE 6" X 6" S89°56'E, 1043.46 FEET PER RECORD [06]).
(S.E. CORNER OF ROBERT RUSSEL S89°41'E, 1043.46 FEET, CALCULATED BEARING AND DISTANCE NO MONUMENT FOUND PER RECORD [07]),
5. FOUND 3 1/4" BRASS DISK AT THE S.W. CORNER OF ROBERT W. RUSSEL D.L.C. CLAIM NO. 69, N89°49'09"W, 2520.10 FEET.
(SEE RESTORATION NO. 104869030).
(SET 1" PIPE PER RECORD [02]).
(1" PIPE N89°56'E, 2519.68 FEET PER RECORD [06]).

MONUMENT SET (PROCEDURES AND DESCRIPTION):

HELD BOTTLE FOR TRUE CORNER POSITION AS SET PER RECORD [02]. REMOVED BOTTLE AND SET 2" X 31.5" GALVANIZED IRON PIPE WITH A 3 1/4" BRASS DISK CONCRETED IN THE TOP, 22" BELOW GROUND LEVEL, MARKED AS SHOWN ON PAGE 2 OF 2. PLACED BOTTLE ON SOUTH SIDE OF NEW MONUMENT, 24" DEEP BELOW GROUND LEVEL.



MONUMENT DETAIL



3 1/4" BRASS DISK

LEGEND

- SET 5/8" X 30" REBAR WITH YELLOW PLASTIC CAP MKD "BENTON COUNTY SURVEYOR"
- ⊙ GOVERNMENT MONUMENT SET AS SHOWN
- ⊙ GOVERNMENT MONUMENT FOUND AS SHOWN
- FOUND MONUMENT AS NOTED
- C.R. COUNTY ROADS

NEW ACCESSORIES:

1. SET REBAR (SEE LEGEND) 10" BELOW GROUND LEVEL, N74°02'W, 43.54 FEET. SET 4.5 FEET SOUTH FROM THE EDGE OF PAVEMENT.
2. SET REBAR (SEE LEGEND) 10" BELOW GROUND LEVEL, N21°26'W, 47.48 FEET. SET 7.7 FEET NORTH FROM EDGE OF PAVEMENT.
3. SET REBAR (SEE LEGEND) 10" BELOW GROUND LEVEL, N29°09'E, 47.67 FEET. SET 6.6 FEET NORTH FROM THE EDGE OF PAVEMENT
4. SET REBAR (SEE LEGEND) 10" BELOW GROUND LEVEL, N76°50'E, 43.68 FEET. SET 3.9 FEET SOUTH FROM THE EDGE OF PAVEMENT.

NOTES:

COMPASS DECLINATION IS 20° EAST. ALL MEASURED DISTANCES AND BEARINGS ARE TO THE CENTER OF THE OBJECT, UNLESS OTHERWISE NOTED. ALL BEARING TREES ARE PAINTED AND HAVE A B.T. TAG ATTACHED, FACING THE CORNER UNLESS OTHERWISE NOTED. ALL NEW BEARING TREES HAVE A PLASTIC WASHER (STAMPED "BENTON COUNTY SURVEYOR CORNER RESTORATION") ATTACHED (BY ALUMINUM NAIL) TO THE FACE, BELOW THE "BT" FOR DISTANCE AND ANGLE MEASUREMENT UNLESS OTHERWISE NOTED. THE DRAWING IS FROM AUTOCAD RELEASE 2002.

THIS RESTORATION WAS PERFORMED AT THE DIRECTION AND APPROVAL OF THE BENTON COUNTY SURVEYOR, David M. Dean

FIRM/AGENCY: BENTON COUNTY SURVEYOR'S OFFICE
 ADDRESS: 360 S.W. AVERY AVE. CORVALLIS OR 97333; PH. 766-6821
 PRESENT: DAVID M. DEAN, P.L.S. AND ADAM CASALEGNO, SURVEY TECH.
 EQUIPMENT: LEICA TCR 1105 TOTAL STATION WITH TDS

REGISTERED
PROFESSIONAL
LAND SURVEYOR

9/3/04 David M. Dean

OREGON
JULY 13, 1984
DAVID M. DEAN
2090

RENEWAL DATE: 12/31/05

C.S. 261

Most W. N.W. cor. of Dudley Dorr D.L.C. 76 T. 13-5

- Set 1" x 30" galv. pipe
- Oak 9" in dia. bears S. 60° E. .070 chs.
- " 9" " " " S. 48° W. .026 "
- Ash 10" " " " S. 11° E. .89 " std.
- " 14" " " " S. 10 3/4° W. .31 " "

Witnesses same as last cor. Sept. 25, 1917.

Int. cor of Dudley Dorr D.L.C. # 76 T. 13-5

- Set 1" galv. pipe in road. Set from other corners.
- Pear tree 14" in dia. bears S. 86° 30' E. .744 chs.
- Apple " 9" " " " S. 79° E. .427 "
- 1/2" galv. pipe " S. 10° 20' W. .508 "

Witnesses John Norton, Edd. & Walter Smith Sept. 25 1917.

W.C. to 1/4 sec. cor. between secs. 7 & 18, T. 13S. R. 4W.

- Set 1" x 30" galv. pipe W.C. is 3.803 chs. on line E. of corner.
- Balm 18" N. 88° 20' E. 2.469 chs.
- Maple 22" in dia. bears N. 2° 10' W. 1.210 chs.

Witness John Norton Sept. 2, 1917

Corner to Secs. 7, 8, 17, & 18 T. 13S. R. 4W.

- Set oak stake (1 1/2") for corner.
- Maple 34" in dia. bears S. 8° E. .207 chs.
- Ash 15" " " " N. 77° W. .24 " std.
- " 10" " " " N. 78° E. .68 " stump and sprouts.

Witnesses John Norton, Edward & Walter Smith Sept. 28, 1917

C.S. 262

N.E. corner of James Gingles D.L.C. # 44 T. 10S R. 4W

- Set Qt. bottle 12" below the surface
- Ash 6" in dia. bears S. 1° 08' W. 5.450 chs.

Witness Clyde Tomlinson Oct. 22 1917.

S.W. cor. of Robt. W. Russell D.L.C. 69, T. 10S. R. 4W.

- Set 1" galv. pipe in center of road.
- Oak 20" in dia. bears N. 14° 30' E. .856 chs. ^{to face} std.
- " 11" " " " N. 57° 30' E. .580 "
- " 20" " " " S. 8° E. .716 chs. ^{to face} std.
- " 12" " " " N. 70° W. .57 " " " "

Witnesses A. Clyde Tomlinson & W. S. Tomlinson. Oct. 20, 1917.

N.W. cor. of Smiley Carter D.L.C. 50 T. 10-4

- Set Qt. bottle 5" below surface
- Nail in top of bottom board south 15 lks.
- 1/2" pipe on line west 2.525 chs. which has a 1/2" pipe S. 25° 49' W. .336 chs.
- Stone at S.E. of Russell cor. east 15.77 chs.

Witness A. Clyde Tomlinson Oct. 22, 1917.

N. W. corner of Smiley Carter DLC 50, Twp. 10 S., R. 4 W.

9

95

Reestablishment by W. C. Galloway

October 22, 1917

Set Qt. bottle, 5" below surface

Nail in top of bottom board South 15 lks.

$\frac{1}{2}$ " pipe on line West 2.525 chains which has a $\frac{1}{2}$ " pipe S25°49'W
.336 chain

Stone at S. E. of Russell el. East 15.77 chains.

Witness A. Clyde Tomlinson

SEC 10

Interior corner of Smiley Carter DLC 50, Twp. 10-4

96

Reestablishment by W. C. Galloway

1920

Set a 1" x 36" pipe from Oak stump 8" in diam N 57 $\frac{1}{4}$ °E

.24 chains

Other trees gone

Witness G. A. Hindes and E. A. Holmes

SEC 10 & 11

S. E. corner of Smiley Carter DLC 50, Twp. 10-4

97

Reestablishment by W. C. Galloway

/September 1937

Set a 1 $\frac{1}{4}$ " shaft, set from original trees

Fir 22" in diam bears N 75° E

.230 chains

Fir 22" in diam bears S 20° E

.198 chains

Oak 24" in diam bears N 86° 30' W

1.104 chains

SEC. No
14

SEE FILE No. 104850020

104850040

REMNUMENTALS W-NW S. CARTER DLC # 50

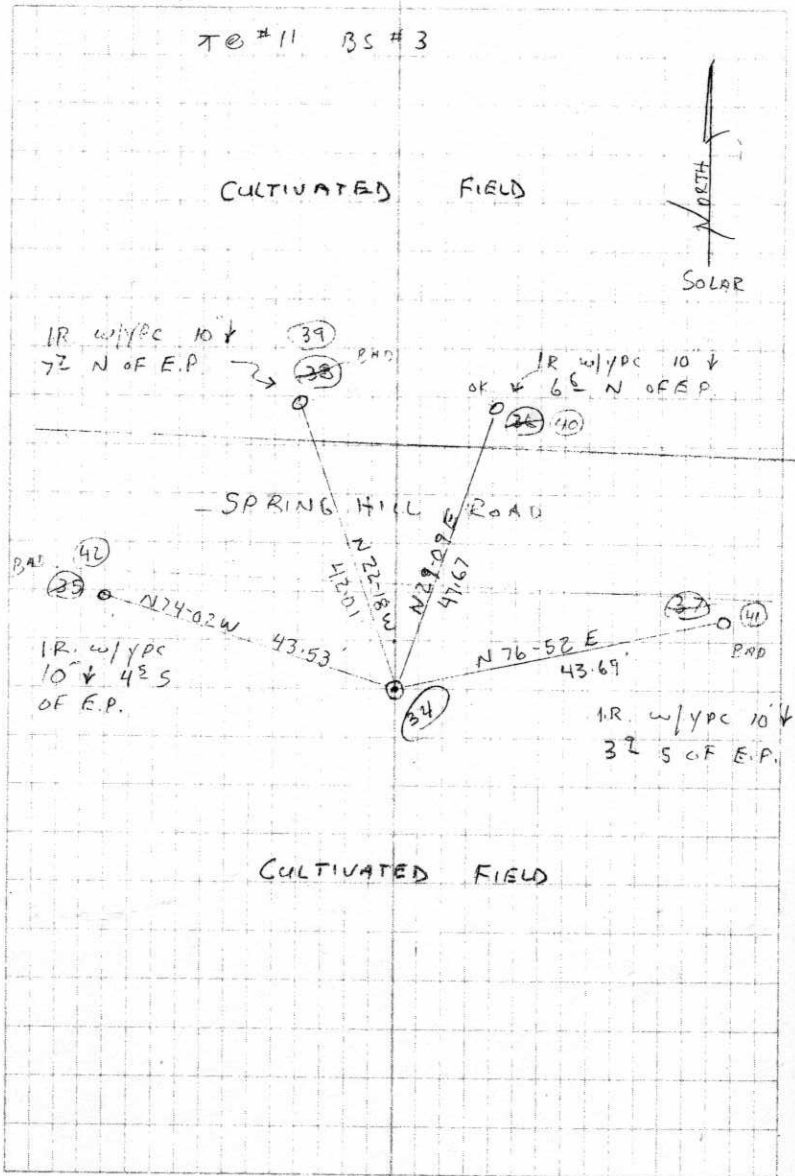
T105 R4W

Fd 1 QT BOTTLE 15" DEEP IN CULT. FIELD
FOR COR. POSITION. Fd 1 1/4" X 2 1/2" IRON
BAR 14" \pm 0^s S'LY. REMOVED BOTTLE AND
SET 2" X 3 1/2" G.I.P. W/ 3/14" BRASS DISK
CONCRETED IN TOP 22" BELOW GROUND
LEVEL AND MKD. AS SHOWN. PLACE
BOTTLE ON S SIDE OF NEW MONY 24" \downarrow

CLEAR, HOT
70 AM 95 PM
30.0 H₇
LEICA TCRI105/TDS

8/9/04 22/42
D. DEAN
A. COSALEGNO

T0 #11 BS #3



3-11-34

34) Fd 07 BOTTLE 15" \downarrow
SET 2" X 3 1/2" GIP
W/ 3/14" B.D. 22" \downarrow

3-11-33

33) Fd 1 1/4" X 2 1/2" I.B.
 \pm 0^s S F. DLC50

