

104858040

CORNER FILE TRACKING

S:\Survey Corners\CORNERS\Templates\Filetrac2.doc

10/04/2010

CORNER NUMBER
104858040

STEP	HISTORY	RESTORATION
Form Prepared, DB	8/27/2013	7/11/19
Field Inspection, DB	7/10/19	7/10/19
Finish index (count unit)	8/27/2013	7/10/19
Counter Index	7/11/19	7/11/19
GIS Index Form	7/11/19	7/11/19
Checked, DB	7/15/19	7/15/19
Form Edited, DB	7/19/19	7/19/19
Form Signed, DB	7/19/19	7/19/19
Authorize Payment, DB	—	—
Archive Digital Files	7/19/19	7/19/19
Collect Documents	7/19/19	7/19/19
PDF File	7/19/19	7/19/19
Copy For Filming	7/19/19	7/19/19
Scanned (pdf to laserfiche)	7/19/19	7/19/19
Filmed (Archived), DB		
Filed, DB		

(DB) = Entry needed in database (Access).

COMMENTS:

DATE 08/27/2013TOWNSHIP 10 SOUTH, RANGE 4 WEST, WILLAMETTE MERIDIAN; SECTION 30 CORNER N/A
DONATION LAND CLAIM MARK CAHOON NO. 58 CORNER NORTHWEST**COMMON CORNER(S):**

NONE

RECORDS (INFORMATION IN *BOLD ITALICS* IS COUNTY STAFFS' INTERPRETATION OF THE RECORD)

BASED ON EXTENSIVE RESEARCH AND RECOVERY OF EVIDENCE, THIS OFFICE HAS DETERMINED THAT MOST GENERAL LAND OFFICE SURVEYORS IN BENTON COUNTY MEASURED TO THE FACE OF BEARING TREES.

- [01] GENERAL LAND OFFICE (GLO) NOTES OF THE MARK CAHOON DONATION LAND CLAIM NO. 58 BY DENNIS HATHORN, D.S., DATED JULY 10, 1854. *SET POST FROM WHICH AN OAK 9" DIA BEARS N85°W, 11 LINKS (7.26 FEET); AN OAK 20" DIA BEARS S82°E, 93 LINKS (61.38 FEET).*
- [02] BENTON COUNTY SURVEY NO. 392 (OLD NO. 138) FIELD NOTES (FIELD BOOK 11, PAGE 31) BY F. MARION WILKES, D.C.S., DATED SEPTEMBER 16, 1913. *SET 4" X 4" X 30" HEART OAK. ORIGINAL TREES, CENTERS OF BEARING TREES, OAK 24" DIA (GLO BT) BEARS S83°E, 0.945 CHAINS (62.37 FEET); OAK 14" DIA (GLO BT) BEARS N74°15'W, 0.121 CHAINS (7.99 FEET).*
- [03] BENTON COUNTY SURVEY NO. 392 (OLD NO. 138) BY F. MARION WILKES, D.C.S., DATED SEPTEMBER 20, 1913. *STONE.*
- [04] BENTON COUNTY CORNER RESTORATION BOOK NO. 1, PAGE 161 BY F. MARION WILKES, D.C.S., DATED SEPTEMBER, 1913. *SET 4" X 4" X 30" HEART OAK STAKE MARKED "CS". OAK 24" DIA (GLO BT) BEARS S83°E, 0.945 CHAINS (62.37 FEET) CENTER LINE OF BT FOR LINE, ORIGINAL TREE; OAK 14" DIA (GLO BT) BEARS N74-1/4°W, 0.121 CHAINS (7.99 FEET) CENTER LINE OF BT FOR LINE, ORIGINAL TREE.*
- [05] BENTON COUNTY CORNER RESTORATION NO. 107. *TRANSCRIBED FROM RECORD [04] AND MAY CONTAIN ERRORS AND/OR OMISSIONS.*
- [06] BENTON COUNTY MAP NO. 10-4-00019 BY F. MARION WILKES, D.C.S., DATED SEPTEMBER 20, 1913. *STONE.*
- [07] BENTON COUNTY MAP NO. 10-4-00027 BY F. MARION WILKES, D.C.S., DATED SEPTEMBER 20, 1913. *STONE.*
- [08] BENTON COUNTY SURVEY NO. 607 (OLD NO. 138) FIELD NOTES (FIELD BOOK 23, PAGE 26) BY W. C. GALLOWAY, C.S., DATED OCTOBER 5, 1917. *BEGIN AT NORTHWEST CORNER OF MARK CAHOON NO. 58. 1-1/4" BLACK PIPE BEARS S0°05'W, 12.159 CHAINS (802.49 FEET).*
- [09] BENTON COUNTY MAP NO. 10-4-00020, NO DATE OR DRAFTSMAN GIVEN. *STONE. 1-1/4" PIPE BEARS S0°07'W, 12.159 CHAINS (802.49 FEET).*
- [10] BENTON COUNTY SURVEY NO. 944 (OLD NO. 299) FIELD NOTES (FIELD BOOK 33, PAGE 49) BY W. C. GALLOWAY, C.S., DATED MARCH 7, 1925. *NORTHWEST OF CAHOON CLAIM. SET 3/4" GALVANIZED PIPE BEARS S0°06-1/2'W, 9.825 CHAINS (648.45 FEET); RESET 1-1/4" BLACK PIPE BEARS S0°06-1/2'W, 12.159 CHAINS (802.49 FEET).*
- [11] BENTON COUNTY MAP NO. 10-5-00013 BY W. C. GALLOWAY, C.S., DATED MARCH AND DECEMBER, 1925. *STONE AT FENCE CORNER. 3/4" GALVANIZED PIPE BEARS S0°04'E, 9.825 CHAINS (648.45 FEET); 1-1/4" PIPE BEARS S0°04'E, 12.159 CHAINS (802.49 FEET).*
- [12] BENTON COUNTY SURVEY NO. 998 (OLD NO. 138) FIELD NOTES (FIELD BOOK 36, PAGE 12) BY W. C. GALLOWAY, C.S., DATED JUNE 8, 1926. *BEGINNING AT 1-1/4" PIPE SOUTH OF NORTHWEST CORNER OF MARK CAHOON'S DLC.*
- [13] BENTON COUNTY SURVEY NO. 9041 TRACED BY W. C. GALLOWAY, C.S., DATED MARCH 30, 1927. *STONE. 3/4" PIPE BEARS S0°04'E, 9.825 CHAINS (648.45 FEET); 1-1/4" PIPE BEARS S0°04'E, 12.159 CHAINS (802.49 FEET).*
- [14] OREGON STATE HIGHWAY DEPARTMENT DRAWING NO. 2B-21-24, CONSTRUCTED LINE, MONMOUTH – CORVALLIS SECTION, WEST SIDE PACIFIC HIGHWAY, BENTON COUNTY, MAY 1933. *CORNER TIED BUT NOT DESCRIBED.*
- [15] OREGON STATE HIGHWAY DEPARTMENT DRAWING NO. 6B-14-18, RIGHT OF WAY MAP, POLK COUNTY LINE TO CALLOWAY ROAD, PACIFIC HIGHWAY WEST, BENTON COUNTY, MARCH 1945. *CORNER TIED BUT NOT DESCRIBED.*
- [16] BONNEVILLE POWER ADMINISTRATION TRAVERSE COMPUTATION SHEET BY KAISER, DATED MARCH, 1958. *3" X 3" STAKE.*

FIRM/AGENCY: BENTON COUNTY SURVEYOR'S OFFICE
ADDRESS: 360 S.W. AVERY AVE., CORVALLIS, OR 97333; PH. 541-766-6821
RESEARCH BY: DAVID L. MALONE, P.L.S.
DATA ENTRY BY: SAME

BENTON COUNTY CORNER RESTORATION FORM, PAGE 1 OF 2, 104858040R2

SEE CORNER HISTORY FORM FOR RECORDS ETC.

CORNER RESTORATION FIELD BOOK NUMBER 32 PAGE(S) 47 DATE 07/10/2019
TOWNSHIP 10 SOUTH, RANGE 4 WEST, WILLAMETTE MERIDIAN; SECTION 30 CORNER N/A
DONATION LAND CLAIM MARK CAHOON NO. 58 CORNER NORTHWEST
CONDITION REPORT ; REFERENCED OUT ; RENEWED X; SURVEYED IN

LOCATION AND COMMENTS:

CORNER IS LOCATED IN A FLAT AREA WITH ± 50 YEAR OLD D. FIR AND UNDERSTORY BRUSH. TO REACH CORNER FROM THE GATED ENTRANCE TO OSU RESEARCH FORESTS ROAD 540 ON THE WEST SIDE OF HWY 99W AND ACROSS FROM THE INTERSECTION OF HWY 99W AND NE VANDENBERG AVENUE, TRAVEL THROUGH GATE AND FOLLOW ROAD 540 WESTERLY FOR 0.42 MILES AND PARK. WALK NORTH ABOUT 880 FEET TO THE CORNER. THERE IS A WALKING TRAIL IN THE VICINITY THAT PASSES ABOUT 100 FEET SOUTHWEST OF THE CORNER. CORNER IS BAD FOR PREMARKING AND GPS CONTROL.

MONUMENTS AND ACCESSORIES FOUND (CONDITION AND SOURCE):

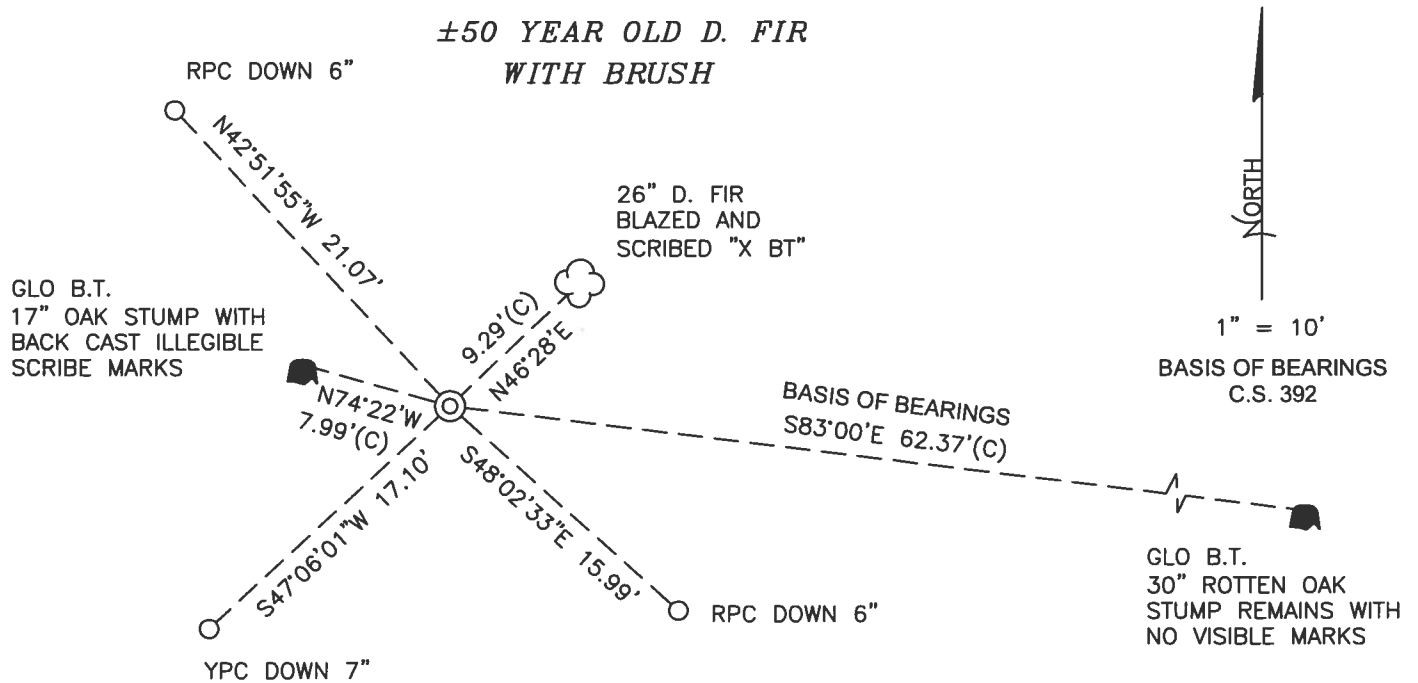
1. FOUND OAK STUMP 17" DIA WITH EXPOSED BACK CAST ILLEGIBLE SCRIBE MARKS BEARS N74°22'W, 7.99 FEET TO CENTER.
(OAK 9" DIA BEARS N85°W, 11 LINKS [7.26 FEET] AS PER RECORD [01]).
(OAK 14" DIA BEARS N74°15'W, 0.121 CHAINS [7.99 FEET] TO CENTER AS PER RECORD [02]).
(OAK 14" DIA BEARS N74-1/4°W, 0.121 CHAINS [7.99 FEET] CENTER LINE OF BEARING TREE FOR LINE AS PER RECORD [04]).
2. FOUND ROTTEN OAK STUMP REMAINS 30" DIA WITH NO VISIBLE MARKS BEARS S83°00'E, 62.37 FEET TO CENTER. **BASIS OF BEARINGS FOR THIS RESTORATION.**
(OAK 20" DIA BEARS S82°E, 93 LINKS [61.38 FEET] AS PER RECORD [01]).
(OAK 24" DIA BEARS S83°E, 0.945 CHAINS [62.37 FEET] TO CENTER AS PER RECORD [02]).
(OAK 24" DIA BEARS S83°E, 0.945 CHAINS [62.37 FEET] CENTER LINE OF BEARING TREE FOR LINE AS PER RECORD [04]).

MONUMENT SET (PROCEDURES AND DESCRIPTION):

FOUND BOTH ORIGINAL GENERAL LAND OFFICE (GLO) BEARING TREE STUMPS, BUT NO OTHER EVIDENCE OF THE CORNER POSITION. F. MARION WILKES, D.C.S., ALSO FOUND BOTH BEARING TREES IN 1913 AND MEASURED TO THE CENTER OF THE BEARING TREES TO SET A STAKE AT THE CORNER POSITION. I HELD WILKES' MEASUREMENTS FROM THE CENTER OF THE TWO STUMPS AND CALCULATED A DISTANCE-DISTANCE INTERSECTION POINT. DUE TO THE TREES BEING NEARLY ON OPPOSITE SIDES OF THE CORNER FROM ONE ANOTHER, THERE ARE TWO SOLUTIONS TO THE CALCULATION THAT ARE FAIRLY CLOSE TOGETHER. I EVALUATED THE SOLUTIONS AND COMPARED THEM USING THE BASIS OF BEARINGS TO THE FARTHER BEARING TREE AND CONCLUDED THAT THE MOST SOUTHERLY OF THE INTERSECTION SOLUTIONS PROVIDES THE CORNER POSITION. THIS DISTANCE-DISTANCE INTERSECTION SOLUTION FROM THE GLO BEARING TREES STUMPS IS ACCEPTED AS THE PERPETUATION OF THE ORIGINAL CORNER POSITION.

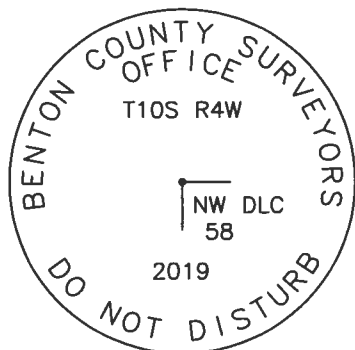
AT THE CALCULATED CORNER POSITION I SET A 2" X 31-1/2" GALVANIZED IRON PIPE WITH A 3-1/4" BRASS DISK CEMENTED IN THE TOP, MARKED AS SHOWN ON PAGE 2 OF 2, AND 2" ABOVE GROUND SURFACE. SET THREE NEW IRON ROD ACCESSORIES AND BLAZED AND SCRIBED ONE NEW BEARING TREE AS SHOWN ON PAGE 2 OF 2. FOUND REMAINS OF WIRE FENCE AROUND THE CORNER POSITION. SET 6 FOOT ORANGE CARSONITE "SURVEY MARKER" POST 1 FOOT NORTH OF BRASS DISK.

±50 YEAR OLD D. FIR
WITH BRUSH



±50 YEAR OLD D. FIR
WITH BRUSH

MONUMENT DETAIL



3-1/4" BRASS DISK

LEGEND

- SET 5/8" X 30" REBAR WITH PLASTIC CAP
- YPC YELLOW PLASTIC CAP MARKED "BENTON COUNTY SURVEYOR"
- RPC RED PLASTIC CAP MARKED "BENTON COUNTY SURVEYOR"
- (C) MEASUREMENT TO CENTER
- ⊙ GOVERNMENT MONUMENT SET AS SHOWN
- C.S. COUNTY SURVEY
- GLO GENERAL LAND OFFICE
- B.T. BEARING TREE
- BEARING TREE STUMP AS NOTED
- ☁ BEARING TREE AS NOTED

NEW ACCESSORIES:

1. SET REBAR (SEE LEGEND) N42°51'55"W, 21.07 FEET AND 6 INCHES BELOW GROUND LEVEL.
2. SET REBAR (SEE LEGEND) S48°02'33"E, 15.99 FEET AND 6 INCHES BELOW GROUND LEVEL.
3. SET REBAR (SEE LEGEND) S47°06'01"W, 17.10 FEET AND 7 INCHES BELOW GROUND LEVEL.
4. D. FIR 26" DIA BEARS N46°28'E, 9.29 FEET TO CENTER, FACE SCRIBED "X BT". SET ALUMINUM NAIL AND AND PLASTIC WASHER ON SOUTHEASTERLY BASE FOR DISTANCE MEASUREMENT.

NOTES:

COMPASS DECLINATION IS 15° EAST. ALL MEASURED DISTANCES AND BEARINGS ARE TO THE CENTER OF THE OBJECT, UNLESS OTHERWISE NOTED. ALL BEARING TREES ARE PAINTED AND HAVE A B.T. TAG ATTACHED, FACING THE CORNER UNLESS OTHERWISE NOTED. ALL NEW BEARING TREES HAVE A PLASTIC WASHER (STAMPED "SURVEY MARKER DO NOT REMOVE") ATTACHED BY AN ALUMINUM NAIL TO THE SIDE CENTER OF THE TREE FOR DISTANCE MEASUREMENT, UNLESS OTHERWISE NOTED.

THIS RESTORATION WAS PERFORMED AT THE DIRECTION AND APPROVAL OF THE BENTON COUNTY SURVEYOR *gla*

REGISTERED
PROFESSIONAL
LAND SURVEYOR

FIRM/AGENCY: BENTON COUNTY SURVEYOR'S OFFICE
ADDRESS: 360 S.W. AVERY AVE., CORVALLIS, OR 97333; PH. 541-766-6821
PRESENT: DAVID L. MALONE, P.L.S., AND BERNARD ALTENBACH, SURVEY TECH.,
STEVE PILKERTON AND SYDNEY ANDERSON, OSU FORESTS
EQUIPMENT: NIKON NIVO3.C WITH SURVEY PRO ONBOARD.

7/19/19 *David L. Malone*

OREGON
JANUARY 12, 1999
DAVID L. MALONE
51523

RENEWAL DATE: 12/31/20

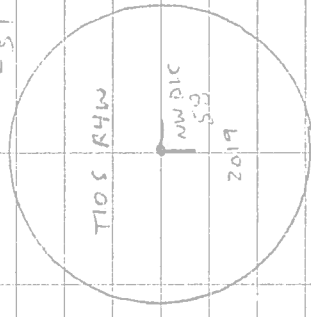
104858543

REMOVAL T105 R4W

NW MARK CALSON DLC no. 58

FD NW GLO BT STUMP & SE GLO BT ROOTING STUMP. HILLS DIST. DIST INT FOR CORNER MARKS 192. AT CORNER POSITION SET 2" x 3 1/2" GIP W/ 3-1/4" BRASS DISK COMMENTED IN THE TOP 2" ABOVE GROUND SURFACE. SET 3 NEW IRON ROD ACCESSORIES AND BARS & SCRIPS IN NW PERCHIN TREE. SET 6 ORANGE CORNUTE "SURVEY MARKER" POST 1 IN NORTH OF BRASS DISK. FD FENCE REMAINS AT CORNER AND OLD FENCE POST TO THE EAST (INDICATE THE GROUND) FD NO EVIDENCE OF THE CORNER STAKE, STAMP OR FENCE CORNER POST.

51



DR = 5/8" x 30" DRUM FOOT

YR OR RPC = YELLOW OF ROD

PLASTIC CAP MARKER

"RENTON COUNTY SURVEYOR"

NEPW = NAIL & PLASTIC WASHOR

MARKED "SURVEY MARKER"

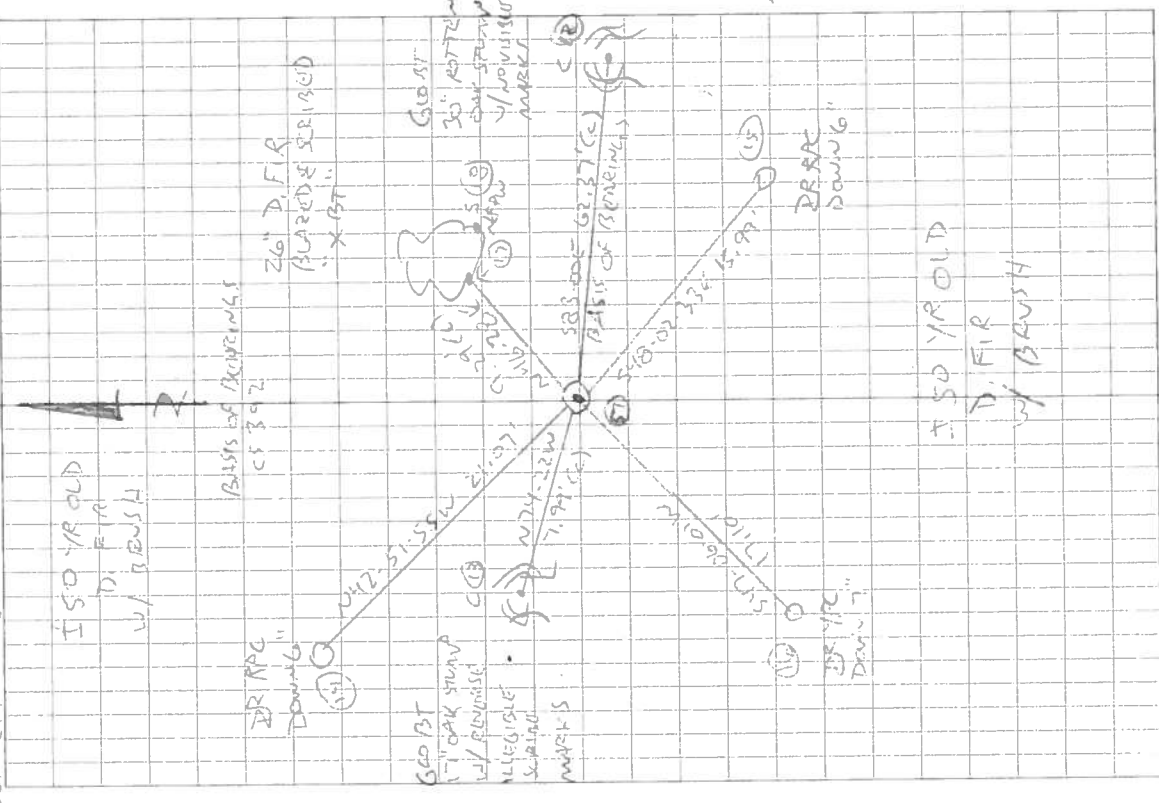
DO NOT REMOVE!

WALTON, W. 6667

7/10/19

REMOVAL SURVEY PRO W/ 100000
 D. ANDERSON S. ANDERSON
 B. ANDERSON S. PIERCEMAN

32/47



T105 R4W OLD

D. FIR W/ BRUSH

BR RPC Double

BR RPC Double

CORNER RESTORATION BOOK NO. 1

C.S. 113
W.C. Galloway
Albert Shriber
G.H. Bath
July 27 1911.

N.W. corner of Wm. Matzger D.L.C. 50 T 12-6
Original oak tree 36" for corner. which checks from witness trees
Oak 12" in dia. bears S. 40° E. 94 chs. std.
" 30" " " " N. 88° W. 1.91 " "

North Exterior corner of Wm Matzger D.L.C. 50 T 12-6
Original stone 12"x14"x? Marked C 50
Oak 24" in dia. bears S. 85° E. 2.22 chs. Gout. tree.

C.S. 76
Witnesses W.C. Galloway D.C.S.
J.W. Dodge
T. A. Lugsdon
Oct. 1910.

S.W. Corner of T.M. Reed D.L.C. 61 T. 11-5
Set a Stone for corner. Set by proportion, fence lines etc.
A pipe on west claim line North 7.76 chs.
A 3/4" under stone on S. claim line S 89° 51' E. 10.978 chs. & Pear tree 12" S. 89° 20' W. 462 chs. From this Pipe "

C.S. #138
F. Marion Wilkes D.C.S.
Sept. 1913.
J. Roy Rickard

N.W. corner of Mark Cahoon D.L.C. 58 T 10-4
Set 4"x4"x30" heart oak stake mkd. C.S.
Oak 24" in dia. bears S. 83° E. 945 chs. & of B.T. for line Orig. tree
" 14" " " " N 74 1/2° W. 1.21 " " " " " " " "

Resurvey Road 166
W.C. Galloway C.S.
June 1916
John Cheesman
Archite. Perth.

The Most South corner of John T. Fortson D.L.C. 57 T 14-6
Stone 18"x10"x12"
Oak 15" in dia. bears N. 55° W. .33 chs. std.
" 18" " " " S. 33° E 1.95 " " (Tree stub taken out of road)
3.53 to cen. of tree
Set 1 1/2" pipe N. 50° E. 303
" 2"x1 1/2" iron S. 50° W. 304
" 3" S. 52° 30' W. 373 not mkd
Oak 12" N 55° 20' W. 1.096 " "

C.S. #149
J.A. Ganong
Apr. 23, 1912
Bristow ?

N.W. corner of H.C. Buckingham D.L.C. 53 T 14-6.
Set a Stone 18"x18"x24" orig. stone, S.W. cor. of Orrin Bellknap Ct. referenced with pipe and iron
Oak 24" in dia. bears N. 18° E. 1.58 chs. std. S.W. stump (see next page for cor. 12.34 E. 2.76)
" 24" " " " S. 85° 10' E. .650 " Oak out for road

S.E. of J.W. Starr D.L.C. 54 T. 14-6
Orig. stone 6"x6"x24"
Oak 17" in dia. bears S. 17° W. 2.143 chs.
" 34" " " " S. 60 3/4° W. 3.512 "

N.E. corner of J.W. Starr D.L.C. 54 T. 14-6
Set 5"x5"x36" oak stake Both stumps std.
Oak 20" in dia. bears N. 59° 40' E. 1.486 chs.
Fir 30" " " " S. 38° 25' E. 408 "

Most E. N.E. cor. of Geo. Smith D.L.C. 63 T. 14-6
Stone 26"x17"x14"
Ash 12" in dia. bears N. 26° 25' E. 490 chs.

Interior Corner of Geo. Smith D.L.C. 63 T 14-6
Stone 16"x8"x8"
Fir 24" in dia. bears N. 3° 05' E. .550 chs.
" 24" " " " S. 75° 45' E. .784 "

by

line 337

one.

N. W. corner of Mark Cahoon DLC 58, Twp. 10-4

Reestablishment by F. Marion Wilkes

Set 4" x 4" x 30" heart Oak stake marked C. S.
Oak 24" in diam bears S 83° E
Oak 14" in diam bears N 74 $\frac{1}{4}$ ° W
Witness J. Roy Rickard

September 1913

.945 chains
.121 chains