

1/4 sec. cor. between secs. 16 & 17 Tp. 14-6
 Set stake ~~to~~ replaced by an ^{Galv. Pipe} iron ~~rod~~ 1939 ^{CS 336} other tree fallen.
 Fir 15" in dia. bears N. 59° 50' E. .601'
 " 13" " " " N. 80° 30' W. .73' ^{std. Now stump}
 " Fir 6" " " " N. 30° E. 4.3 FT. = .065' ^{CS 336} 1939
 Witnesses C.L. McCreedy + Chs. Johnson Aug. 29, 1911.

C.S. #116 S.E. cor. of John Haskins' D.L.C. #71 Tp. 10-4.
 Set a qt. bottle rock near.
 Oak 12" in dia. bears N. 4° E. .18' std.
 " 20" " " " N. 43° 20' E. .421'
 " 11" " " " S. 58° 10' W. .468'
 Witnesses W.E. Rodgers, D.F. Kay + W.F. Holman Aug. 31, 1911.

" N.E. corner of John Haskins' D.L.C. #71 Tp. 10-4.
 Set 3/4" bolt, orig. cor. stump std.
 Oak 6" in dia. bears S. 31° W. .680'
 Fir 6" " " " N. 65° 30' W. .441'
 Witnesses W.E. Rodgers, D.F. Kay + W.F. Holman Aug. 31, 1911.

" N.E. Ext. cor. of John Haskins' D.L.C. #71 Tp. 10-4 or Cor. along
 the south side of Hadges' D.L.C. #48
 Set a landslide to a ^{glow} ^{orig. cor.}
 Fir 10" in dia. bears S. 60° E. .188'
 Oak 40" " " " S. 60° E. .51' std. dead
 " 20" " " " S. 54° W. 1.63' " "
 Fir 11" " " " N. 5° W. .089'
 Witnesses W.E. Rodgers, W.F. Holman Sept. 1, 1911.

" S.W. corner of Drury Hadges' D.L.C. #48 Tp. 10-4.
 Set a stone 18" X 16" X 16". Orig. cor. S.E. stump found.
 Oak 5" in dia. bears N. 29° E. .12' std. not mtd.
 " 11" " " " N. 82° W. .067'
 Witnesses W.E. Rodgers + D.F. Kay Sept. 1, 1911.

" S.E. corner of Tabert Carter's D.L.C. #45 Tp. 10-4.
 Set a 3/4" galvanized pipe iron in top ^{changed to 3/4" 40' shaft} ^{orig. cor. hole N. 16° E. 20'}
 Fir 14" in dia. bears North .390'
 Oak 13" " " S. 53° W. .259'
 Witnesses W.E. Rodgers + D.F. Kay Sept. 1, 1911.

" N.W. corner of John Haskins' D.L.C. #71 Tp. 10-4.
 Set two qt. bottles one under the other ^{3/4" Pipe S. 20 ft.}
 Witness Chs. H. Leonard ^{3/4" Pipe W. 4.606 also 4.909 W. and 20 ft. N.} Sept. 2, 1911.

C.S. 117 Sec. cor. to secs. 3, 4, 9 + 10 Tp. 13-5.
 Set a 1/4" pipe Orig. cor.
 no trees near.
 Witnesses J.G. Buchanan + Herald Whithy Sept. 21, 1911.

4-11-09

11.

5-4-79
on sets
-303

Northeast Exterior corner of John Haskins DLC 71, Twp. 10-4 or corner along
the south side of Hodges DLC 48

346

September 1, 1911

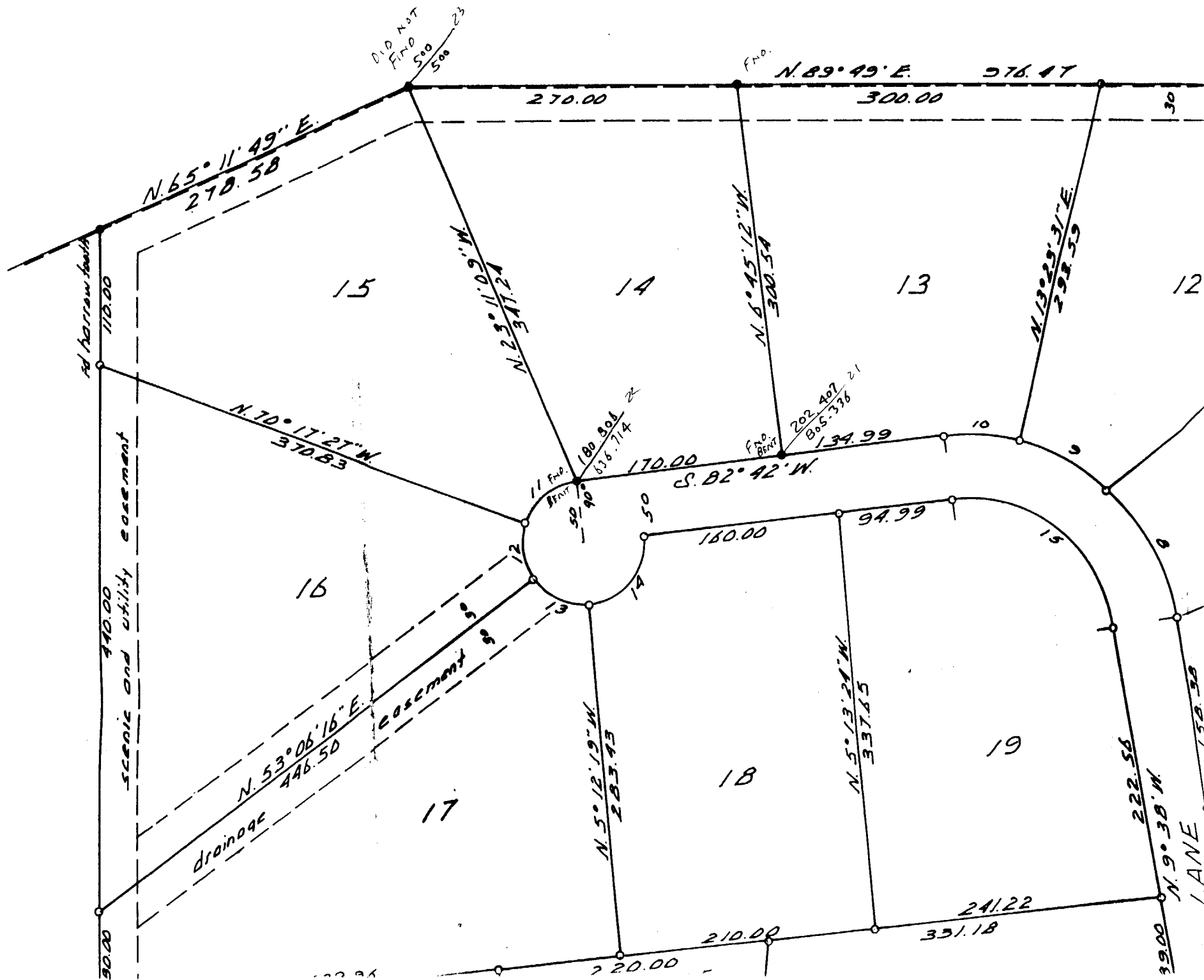
Reestablishment by W. C. Galloway

Set a landside to a plow, original corner
Fir 10" in diam bears S. 60° E
Oak 40" in diam bears S. 60° E
Oak 20" in diam bears S. 54° W
Fir 11" in diam bears N. 5° W
Witnesses W. E. Rodgers, W. F. Holman

.188 chains
.51 chains (standing dead)
1.63 chains
.089 chains

78
71

CORNER HISTORY		T 10 S, R 4 W		SECTION 23 D.L.C. JOHN J. HASKINS NO. 71		CORNER CORNER N-NW		# 871070
NO.	DATE	SOURCE	SURVEYOR	MONUMENTS AND ACCESSORIES		COMMENTS		
①	8/12/1857	ORIG. GLO	MADDEN VANDEERPOOL	SET POST @ 2 OAK B.T.'S				1
								2
②	8/31/1911	CS # 265	W.C. GALLOWAY	FND. ORIG. COR. + 2 BT'S; SET LANDSIDE @ 2 FIR BT'S		FB 10/16		3
								4
③	9/1/1911	OLD COR. REPT. BK. 41 PG. 25	" "	" " " " " " " " " " " "				5
								6
④	"	REST. 146	" "	" " " " " " " " " " " "		TRANS. COPY & MAY CONT. E TO		7
								8
⑤	10/1/1917	CS # 606	BURT WILKES	PLOW SHARE		FB 14/45		9
								10
⑥	11/12/1917	MAP NO. 10-4-00013	BURT WILKES	PLOW SHARE				11
								12
⑦	3/18/1918	MAP NO. 10-4-00008	W.C. GALLOWAY	PLOW SHARE				13
								14
⑧	7/2/1959	FIR WELLS HOMES SUBD.	RICHARD FAIL	NO MON. DESC.				15
								16
⑨	4/23/1971	CS # 5064	FRED LEMKE	FND. PLOW SHARE				17
								18
⑩	7/19/1977	BRAMBLEWOOD SUBD.	RICHARD FAIL	NO MON. DESC. BUT 5/8" X 30" C. ROD IS CLOSE				19
								20
⑪	9/10/92		C.J. LIESENFELT					21
						DID NOT FIND WITH DE-		22
						CENT CONTROL. GOOD		23
						CONTROL MAY YIELD A		24
						SMALL ENOUGH AREA TO		25
						DIG UP WITHOUT DEPENDING		26
						ON THE METAL DETECTOR		27
						BUT I DON'T THINK THE		28
						PLOW SHARE OR THE B.T.'S		29
						ARE IN. DID NOT FIND		30
						THE LOT CORNER EITHER.		31



TOWNSHIP 10 SOUTH, RANGE 4 WEST, WILLAMETTE MERIDIAN; SECTION 23 CORNER
DONATION LAND CLAIM JOHN J. HASKINS NO. 71 CORNER NORTH-NORTHWEST

COMMON CORNER(S):

SOUTHEASTERLY LINE OF DURY R. HODGES DLC NO. 48.

UPDATES AND REVISIONS:

CORNER RECORDS (PREVIOUS RENEWALS, SURVEYS, ETC.)

- [01] ORIGINAL GLO SURVEY BY MADDEN VANDERPOOL DATED AUGUST 12, 1857.
- [02] COUNTY SURVEY NO. 265 BY W.C. GALLOWAY DATED AUGUST 31, 1911 (FIELD BOOK NO. 10, PAGE 16).
- [03] OLD CORNER RESTORATION BOOK NO. 1 PAGE 25 BY W.C. GALLOWAY DATED SEPTEMBER 1, 1911.
- [04] CORNER RESTORATION NO. 146 BY W.C. GALLOWAY DATED SEPTEMBER 1, 1911.
- [05] COUNTY SURVEY NO. 606 BY BURT WILKES DATED OCTOBER 1, 1917 (FIELD BOOK NO. 14 PAGE 45).
- [06] MAP NO. 10-4-00013 BY BURT WILKES DATED NOVEMBER 12, 1917.
- [07] MAP NO. 10-4-00008 BY W.C. GALLOWAY DATED MARCH 18, 1918.
- [08] FIR VIEW HOMES SUBDIVISION BY RICHARD FAIL DATED JULY 3, 1959
- [09] COUNTY SURVEY NO. 5064 BY FRED LEMKE DATED APRIL 23, 1971.
- [10] BRAMBLEWOOD SUBDIVISION BY RICHARD FAIL DATED JULY 19, 1977.

COMMENTS/LOCATION/ETC:

RECORD [04] IS A TRANSCRIBED COPY OF RECORD [03] AND MAY CONTAIN ERRORS AND OMISSIONS.

ON SEPTEMBER 10, 1992 CURT LIESENFELT AND MARK ANDERSON SEARCHED WITHOUT SUCCESS FOR THE CORNER MONUMENTS OR ACCESSORIES USING MEDIOCRE CONTROL. GOOD CONTROL MAY YEILD A SMALL ENOUGH AREA TO DIG UP WITHOUT DEPENDING ON A METAL DETECTOR.

NOTES:

THIS IS A MICROSOFT WORD (VERSION 5.0) DOCUMENT NAMED "04871070" CREATED FROM A BOILER PLATE DOCUMENT NAMED "HISTORY", WHICH HAS A STYLESHEET NAMED "CORNER" ATTACHED TO IT.

FIRM/AGENCY: BENTON COUNTY SURVEYOR'S OFFICE
ADDRESS: 360 S.W. AVERY AVE. CORVALLIS OR 97333; PH. 757-6821
RESEARCH BY: CURTIS J. LIESENFELT/MARK E. ANDERSON
DATA ENTRY BY: MARK E. ANDERSON