

- # 120 ✓ S.E. cor. of John Rodgers D.L.C. # 66 Tp 10-4
 Set 1 1/4" pipe, plug in top.
 Service 4" in dia. bears N. 23° 40' W. .863'
 Witnesses Dec. 30, 1911.
- # 120 ✓ 1/4 sec. cor. between sec. 7+18, Tp. 10-4
 Set 1" steel shaft. stump + stump hole.
 Oak 7" in dia. bears S. 37° W. .123
 " 10" " " " N. 63° 10' W. .242
 Witness E. A. Thurston. Jan. 1, 1912.
- # 121 ✓ S.E. cor. of Silas Newcomb's D.L.C. # 50 Tp. 12-5.
 Set 1" pipe stump set. hinge bolt in old stump hole.
 Oak 10" in dia. bears N. 83° 12' E. 3.660'
 " 16" " " " S. 40° 50' E. .977'
 Witnesses J. A. Parks + ~~Geo.~~ Geo. Cooper. Jan. 16, 1912
- # 121 ✓ N.E. cor. of Chas. Bates D.L.C. # 53 Tp. 12-5
 Binder - Lubino 2" x 2"
 Oak 16" in dia. bears N. 40° 10' E. .717'
 " 20" " " " West .808'
 Witnesses J. A. Parks + Geo. Cooper. Jan. 16, 1912.
- # 123 ✓ Cor. 45.549' N. 59° 43' W. of N.E. cor. of John Trapp's D.L.C. # 56 Tp. 11-5
 Stone already set. Ash stump S. 70° E. .46' (Pipe N. 20°
 Oak 6" in dia. bears S. 50° 46' E. .770' Pipe 3.20"
 " 18" " " " N. 56° 20' W. .634'
 Witnesses M.A., J.E., J.R. + W.C. Wyatt. Jan. 27, 1912.
- # 146 ✓ S.W. cor. Jacob J. Hatter D.L.C. # 75 Tp. 10 S. R. 4. W. 1. W. M.
 Set 30x4x4" Oak stake for cor. from which
 in Oak 10" dia. tree S 2° 15' W. 29.4 lbs. dist.
 S.E. original tree still. C.W. stumps. 2-5-1912
- ✓ S.E. cor. Jacob J. Hatter D.L.C. # 73 10 4
 Set 30x4x4" Oak stake for cor. from which
 in Oak 10" dia. tree N 35° 40' E. 112.2 lbs. dist.
 " " 16" " " N 64° 50' E. 100 " "
 Both original trees gone. stumps left. 2-5-1912
- ✓ S.W. cor. Wm Harrison Johnson D.L.C. # 63 10-4
 Set Stone 1-1/2 x 1/2 x 8" for cor. from which
 in Oak 10" dia. tree S 64° W. 423 lbs. dist.
 " " 17" " " " 87°-35' W. 351.5 " "
 Both original stumps. 2-5-1912
- S.E. 2nd Standard P. all south ut. sec. 3+4 1/2 S. R. 4. W. 1. W. M.
 Set Oak post 38x3x4" for cor. from which
 in Oak 27" dia. tree S 27° 35' E. 60 lbs. dist.
 " " 7" " " " 57° 25' W. 106 " "
 2-6-1912

Southwest corner Jacob L. Halter DLC 73, Twp 10 S R 4 W WM

151

Reestablishment by ~~W. C. Galloway~~ *

February 5, 1912

Set 30 x 4 x 4" Oak stake for corner

Oak 10" in diam bears S 2° 15' W 29.4 lks distant

S. E. Original tree standing. S. W. stump

*J.A. GANONG SEE COUNTY SURVEY NO. 287 (FIELD BOOK NO. 9 PAGE 45 + COVER)(CJL 3/17/92).

Re-established by Curtis C. Hanson

March 28, 1961

All Gone

SET 3/4" Rod proportionate distance between northeast and northwest corners of Anthony Roberts D.L.C. 55.

Oak 5" diam. South 0.068 chains Blaze, No Scribe

T10S R4W SEC. 32 E1/4 SW COR. JACOB L. HALTER, D.L.C. NO. 73
 FND: 7/8" IRON ROD FOR THE COR. (COR. REST. NO. 151)

" THE MOSTLY ROTTED REMAINS OF AN OAK STUMP 10"
 1M DIA. BEARS S 1°30'E* ~ 5.4 (500 S DIA. SOUTH
 4.49' COR. REST. NO. 151). SET A B.T. TAG ON THE TOP
 OF THE STUMP

" 3/4" BEN. CO. B.C. C. THE NW COR. OF THE ANTHONY
 ROBERTS D.L.C. NO. 55 AS PER COR. REST. NO. 3915
 BEARS S 89°19'31"W ~ 596.87' (N 89°56'15"W ~ 596.84'
 CS# 5743).

NO OTHER RECORD BEARING OBJECTS WERE RECOVERED

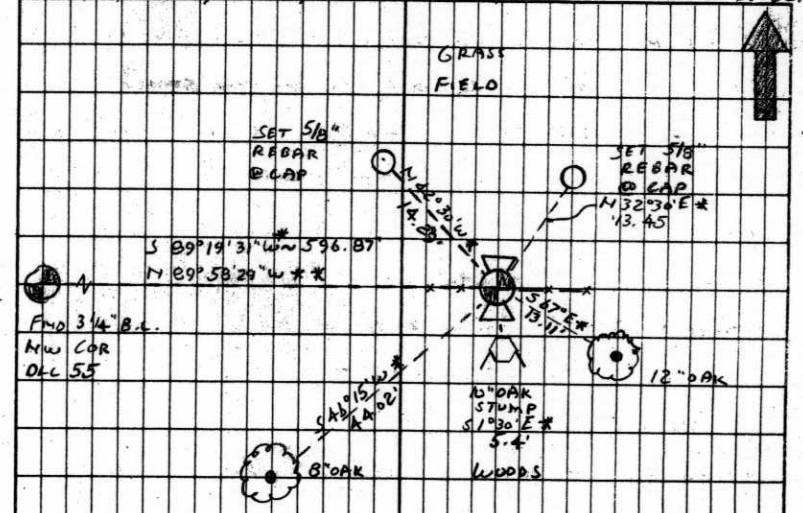
SET: 2" I.D. x 36" LONG IRON PIPE @ A 3/4" BEN. CO. B.C.
 STAMPED AS SHOWN CENTERED OVER THE RECOVERED
 7/8" I. ROD.

" 5/8" x 30" REBAR @ A Y.P.C. MKD. "BENTON COUNTY SUR-
 VEYOR" BEARS N 32°30' E* 13.45'. THE REBAR IS ON
 THE N/4 EDGE OF THE BRUSH LINE.

AN OAK 12" IN DIA. BEARS S 67° E* 13.11', FACED &
 SCRIBED "1/4 S33 D.L.C. 55 BT". SET A PK + B.C. B.W.
 IN THE SW 1/4 BASE. SET A B.T. TAG ON THE NW 1/4 FACE.

AN OAK 8" IN DIA. BEARS S 46° 15' W* 44.02', FACED &
 SCRIBED "1/4 S32 D.L.C. 55 BT". SET A PK + B.C. B.W. IN
 THE NW 1/4 BASE. SET A B.T. TAG ON THE NE 1/4 FACE

4/18/91, C.J.L. MEAD, KUH DATASCOPE, BRUNTON COMP. 20° E. DEC. 10/16



SET 5/8" x 30" REBAR @ A Y.P.C. MKD. "BENTON COUNTY SUR-
 VEYOR" BEARS N 42°30' W* 14.29'. THE REBAR IS ON
 THE N/4 EDGE OF THE BRUSH LINE.

" ORANGE FIBER GLASS "SURVEY STAKE" POST 2" x 1/2"
 THE COR. IS LOCATED IN AN OLD E-W ROW: + SW FENCE
 LINE NOW MOSTLY DOWN 7 11.5' S 1/4 FROM THE 5/8"
 EDGE OF A FIRE BREAK ALONG THE S. SIDE OF A
 GRASS FIELD. IT IS POOR FOR
 PREMARKING & GPS CONTROL.

*: COMPASS BEARING
 **: BEARING BASED ON CS#

T10S R4W
 1/4
 D.L.C.
 532 73
 533
 D.L.C. 55
 SW COR D.L.C. 73
 J.L. HALTER
 1991

1048 730.30

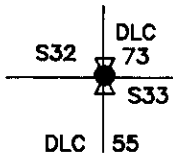
BENTON COUNTY CORNER RESTORATION FORM

3916

TOWNSHIP 10 S RANGE 4 W SECTION 32 D.L.C. S.W. COR. JACOB L. HALTER NO. 73 E 1/4 CORNER SEC. 32
DATE 4/18/91 CORNER RESTORATION FIELD BOOK NUMBER 10 PAGE(S) 16

CORNER DESIGNATION:

THE QUARTER CORNER COMMON TO SECTIONS 32 AND 33 AND THE SW CORNER OF THE JACOB L. HALTER DLC NO. 73, IN T 10 S, R 4 W, WILLAMETTE MERIDIAN.



- CONDITION REPORT ONLY
- REFERENCED OUT
- XX RENEWED
- SURVEYED IN

LOCATION AND COMMENTS:

THE CORNER IS LOCATED IN AN OLD EAST-WEST WOVEN AND BARBED WIRE FENCE LINE NOW MOSTLY DOWN AND 11.5 FEET SOUTHERLY FROM THE SOUTHERLY EDGE OF A FIRE BREAK ALONG THE SOUTH SIDE OF A GRASS FIELD.

PREVIOUS RENEWALS/SURVEYS, ETC:

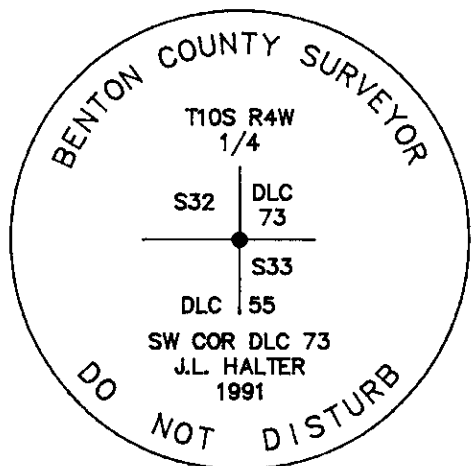
- ORIGINAL GLO SURVEY BY JAMES FREEMAN DATED DECEMBER 17, 1852.
- COUNTY SURVEY NO. 48 BY UNKNOWN PERSON DATED MAY 12, 1857.
- GLO SURVEY BY MADDEN VANDERPOOL DATED AUGUST 12, 1857.
- COUNTY SURVEY NO. 287 BY J.A. GANONG DATED FEBRUARY 5, 1912.
- OLD CORNER RESTORATION BOOK NO. 1 PAGE 28 BY J.A. GANONG DATED FEBRUARY 5, 1912.
- CORNER RESTORATION NO. 151 BY W.C. GALLOWAY DATED FEBRUARY 5, 1912.
- CORNER RESTORATION NO. 151 BY CURTIS C. HANSON DATED MARCH 28, 1961.
- COUNTY SURVEY NO. 5743 BY KEN WIGHTMAN II DATED SEPTEMBER 4, 1974.

MONUMENTS AND ACCESSORIES FOUND (CONDITION AND SOURCE):

- FOUND: 7/8" IRON ROD FOR THE CORNER (CORNER RESTORATION NO. 151).
- FOUND: THE MOSTLY ROTTED REMAINS OF AN OAK STUMP 10" IN DIAMETER BEARS S 1° 30' E * 5.4 FEET (5" DIAM. SOUTH 4.49 FEET CORNER RESTORATION NO. 151). SET A B.T. TAG ON THE TOP OF THE STUMP.
- FOUND: 3 1/4" BENTON COUNTY BRASS CAP AT THE NORTHWEST CORNER OF THE ANTHONY ROBERTS DLC NO. 55 AS PER CORNER RESTORATION NO. 3915 BEARS S 89° 19' 31" W * 596.87 FEET (N 89° 56' 15" W 596.84 FEET COUNTY SURVEY 5743).

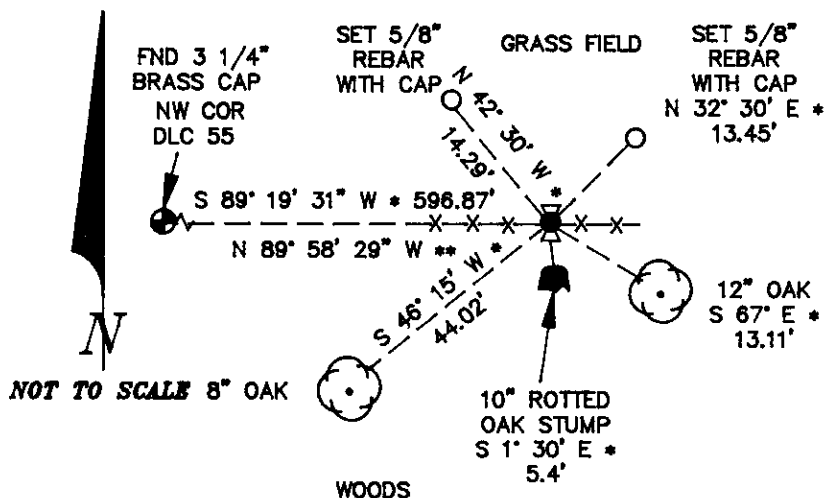
NO OTHER RECORD BEARING OBJECTS WERE RECOVERED.

MONUMENT DETAIL



3 1/4" BRASS CAP

SKETCH



MONUMENT SET (PROCEDURES AND DESCRIPTION):

SET: 2" INSIDE DIAMETER X 36" LONG IRON PIPE WITH A 3 1/4" BENTON COUNTY BRASS CAP, STAMPED AS SHOWN, CENTERED OVER THE RECOVERED 7/8" IRON ROD. SEE COUNTY SURVEY NO. 8513 FOR TIES TO OTHER CORNERS IN THE AREA.

NEW ACCESSORIES:

- SET: 5/8" X 30" REBAR WITH A YELLOW PLASTIC CAP MARKED "BENTON COUNTY SURVEYOR", BEARS N 32° 30' E * 13.45 FEET. THE REBAR IS ON THE NORTHERLY EDGE OF A BRUSH LINE.
- AN OAK 12" IN DIAMETER BEARS S 67° E * 13.11 FEET, FACED AND SCRIBED "1/4 S33 DLC 55 BT". SET A PK NAIL AND B.C.B.W. IN THE SOUTHWESTERLY BASE. SET A B.T. TAG ON THE NORTHWESTERLY FACE.
- AN OAK 8" IN DIAMETER BEARS S 46° 15' W * 44.02 FEET, FACED AND SCRIBED "1/4 S32 DLC 55 BT". SET A PK NAIL AND B.C.B.W. IN THE NORTHWESTERLY BASE. SET A B.T. TAG ON THE NORTHEASTERLY FACE.
- SET: 5/8" X 30" REBAR WITH A YELLOW PLASTIC CAP MARKED "BENTON COUNTY SURVEYOR", BEARS N 42° 30' W * 14.29 FEET. THE REBAR IS ON THE NORTHERLY EDGE OF A BRUSH LINE.
- SET: ORANGE FIBERGLASS "SURVEY STAKE" POST 2 FEET NORTHERLY.

NOTES:

- * = COMPASS BEARING
- ** = BEARING BASED ON COUNTY SURVEY NO. 8513
- B.C.B.W. IS A BRASS WASHER STAMPED "BENTON COUNTY SURVEYOR". COMPASS DECLINATION IS 20° EAST. ALL MEASURED DISTANCES AND COMPASS BEARINGS ARE TO THE CENTER OF THE OBJECT, UNLESS OTHERWISE NOTED.

THIS RESTORATION WAS PERFORMED AT THE DIRECTION AND APPROVAL OF THE BENTON COUNTY SURVEYOR. *[Signature]*

FIRM/AGENCY: BENTON COUNTY SURVEYOR
ADDRESS: 360 S.W. AVERY AVE. CORVALLIS OR. 97333; PH. 757-8821
SURVEY CREW: CURTIS J. LIESENFELT & MARK E. ANDERSON
WITNESS:

REGISTERED PROFESSIONAL LAND SURVEYOR
Curtis J. Liesenfelt
OREGON
JULY 17, 1986
CURTIS J. LIESENFELT
2213