

105240565

CORNER FILE TRACKING

S:\Survey Corners\CORNERS\Templates\Filetrac2.doc
10/04/2010

CORNER NUMBER
105240565

STEP	HISTORY	RESTORATION
Form Prepared, DB	10/14/14	2/02/2015
Field Inspection, DB	01/30/15	01/30/15
Finish index (count unit)	10/14/14	01/30/15
Counter Index	01/30/15	01/30/15
GIS Index Form	01/30/15	01/30/15
Checked, DB	2/02/15	2/02/15
Form Edited, DB	2/02/15	2/02/15
Form Signed, DB	2/02/15	2/02/15
Authorize Payment, DB	—	—
Archive Digital Files	2/02/15	2/02/15
Collect Documents	2/02/15	2/02/15
PDF File	2/02/15	2/02/15
Copy For Filming	2/02/15	2/02/15
Scanned (pdf to laserfiche)	2/02/15	2/02/15
Filmed (Archived), DB		
Filed, DB		

(DB) = Entry needed in database (Access).

COMMENTS:

DATE 10/14/2014

TOWNSHIP 10 SOUTH, RANGE 5 WEST, WILLAMETTE MERIDIAN; SECTION 8 CORNER COUNTY LINE
DONATION LAND CLAIM N/A CORNER N/A

COMMON CORNER(S):

NONE

RECORDS (INFORMATION IN *BOLD ITALICS* IS COUNTY STAFFS' INTERPRETATION OF THE RECORD)

BASED ON EXTENSIVE RESEARCH AND RECOVERY OF EVIDENCE, THIS OFFICE HAS DETERMINED THAT MOST GENERAL LAND OFFICE SURVEYORS IN BENTON COUNTY MEASURED TO THE FACE OF BEARING TREES.

[01] BENTON COUNTY SURVEY 10157 (OLD NO. 134) FIELD NOTES (FIELD BOOK 50, PAGE 16) BY W. C. GALLOWAY, C.S., DATED OCTOBER 28, 1930. *CORNER NOT DESCRIBED.*

[02] BENTON COUNTY SURVEY 10157 (OLD NO. 134) BY W. C. GALLOWAY, C.S., DATED OCTOBER 27, 1930. ALSO RECORDED AS POLK COUNTY SURVEY NO. 15402. *1-1/2" PIPE.*

[03] BENTON COUNTY SURVEY NO. 1472 (OLD NO. 134) FIELD NOTES (FIELD BOOK 58, PAGE 65) BY W. C. GALLOWAY, C.S., DATED MAY 11, 1940. *1-1/2" PIPE COUNTY LINE.*

FIRM/AGENCY: BENTON COUNTY SURVEYOR'S OFFICE

ADDRESS: 360 S.W. AVERY AVE., CORVALLIS, OR 97333; PH. 541-766-6821

RESEARCH BY: DAVID L. MALONE, P.L.S.

DATA ENTRY BY: SAME

BENTON COUNTY CORNER RESTORATION FORM, PAGE 1 OF 2, 105240565R1

SEE CORNER HISTORY FORM FOR RECORDS ETC.

CORNER RESTORATION FIELD BOOK NUMBER 30 PAGE(S) 26 DATE 01/30/2015
TOWNSHIP 10 SOUTH, RANGE 5 WEST, WILLAMETTE MERIDIAN; SECTION 8 CORNER COUNTY LINE _____
DONATION LAND CLAIM N/A CORNER N/A
CONDITION REPORT _____; REFERENCED OUT _____; RENEWED X; SURVEYED IN _____

LOCATION AND COMMENTS:

CORNER IS LOCATED ON A MODERATELY STEEP NORTHEAST FACING SLOPE IN ± 15 YEAR OLD D. FIR REPROD. TO REACH CORNER FROM THE INTERSECTION OF TAMPICO ROAD AND DUNN FOREST ROAD 100, DRIVE THROUGH GATE AND FOLLOW ROAD 100 FOR 1.30 MILES TO ROAD 140 ON THE RIGHT. FOLLOW ROAD 140 FOR 0.89 MILES TO ROAD 146 ON THE RIGHT, PARK AND WALK APPROXIMATELY 460 FEET N60°W TO THE CORNER. CORNER IS BAD FOR PREMARKING AND POOR FOR GPS CONTROL.

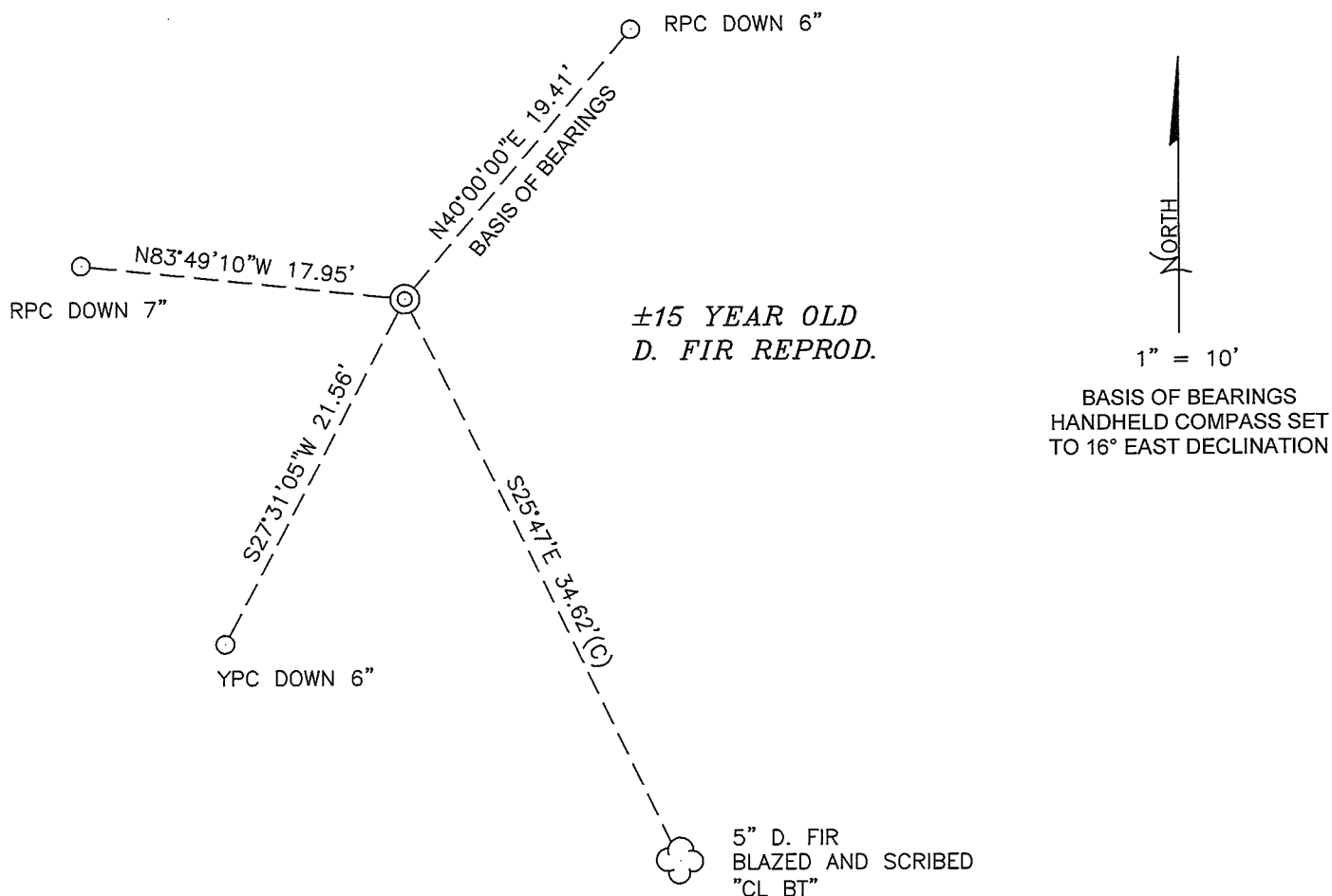
MONUMENTS AND ACCESSORIES FOUND (CONDITION AND SOURCE):

1. FOUND 1-1/2" INNER DIAMETER GALVANIZED IRON PIPE WITH THE TOP FLARED, FIRMLY SET, STICKING UP 10" ABOVE GROUND SURFACE.
(CORNER NOT DESCRIBED IN RECORD [01]).
(1-1/2" PIPE PER RECORDS [02] AND [03]).

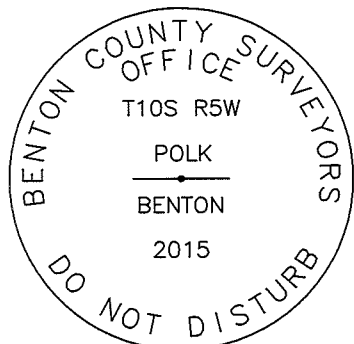
MONUMENT SET (PROCEDURES AND DESCRIPTION):

FOUND 1-1/2" INNER DIAMETER GALVANIZED IRON PIPE WHICH WAS SET BY W. C. GALLOWAY, C.S., IN 1930, TO MARK THE COUNTY LINE. GALLOWAY SET THIS PIPE BY MEASURING 15.45 CHAINS FROM THE QUARTER CORNER BETWEEN SECTIONS 5 AND 8, BUT DID NOT NECESSARILY SET THE PIPE ON THE NORTH-SOUTH CENTER LINE OF SECTION 8. THE FIELD NOTES (FIELD BOOK 50, PAGE 16) DO NOT DESCRIBE THE MONUMENT WHICH WAS SET, BUT THE MAP (C.S. 10157) DOES. WHILE SURVEYING THE NORTH-SOUTH CENTER LINE OF SECTION 8 IN 1940 (C.S. 1472), GALLOWAY CALLED A 1-1/2" PIPE COUNTY LINE AND STATED PIPE SHOULD BE 0.065 CHAINS FURTHER EAST. IT IS NOT CLEAR WHETHER GALLOWAY MOVED THE PIPE, OR LEFT IT IN THE ORIGINAL POSITION. I AM ACCEPTING THE PIPE AS BEING AN ANGLE POINT IN THE COUNTY LINE WHERE IT WAS FOUND.

IN THE PIPE I CEMENTED A 3-1/4" BRASS DISK MARKED AS SHOWN ON PAGE 2 OF 2. SET THREE NEW IRON ROD ACCESSORIES AND BLAZED AND SCRIBED ONE NEW BEARING TREE AS SHOWN ON PAGE 2 OF 2. SET A 6 FOOT ORANGE CARSONITE "SURVEY MARKER" POST 1 FOOT NORTH OF MONUMENT.



MONUMENT DETAIL



3-1/4" BRASS DISK

LEGEND

- SET 5/8" X 30" REBAR WITH PLASTIC CAP
- YPC YELLOW PLASTIC CAP MARKED "BENTON COUNTY SURVEYOR"
- RPC RED PLASTIC CAP MARKED "BENTON COUNTY SURVEYOR'S OFFICE"
- (C) MEASUREMENT TO CENTER
- ⊙ GOVERNMENT MONUMENT SET AS SHOWN
- C.S. COUNTY SURVEY
- ☁ BEARING TREE AS NOTED

NEW ACCESSORIES:

1. SET REBAR (SEE LEGEND) N40°00'00"E, 19.41 FEET AND 6 INCHES BELOW GROUND LEVEL.
2. SET REBAR (SEE LEGEND) S27°31'05"W, 21.56 FEET AND 6 INCHES BELOW GROUND LEVEL.
3. SET REBAR (SEE LEGEND) N83°49'10"W, 17.95 FEET AND 7 INCHES BELOW GROUND LEVEL.
4. D. FIR 5" DIA BEARS S25°47'E, 34.62 FEET TO CENTER, FACE SCRIBED "CL BT". SET ALUMINUM NAIL AND PLASTIC WASHER ON SOUTHWESTERLY BASE FOR DISTANCE MEASUREMENT.

NOTES:

COMPASS DECLINATION IS 16° EAST. ALL MEASURED DISTANCES AND BEARINGS ARE TO THE CENTER OF THE OBJECT, UNLESS OTHERWISE NOTED. ALL BEARING TREES ARE PAINTED AND HAVE A B.T. TAG ATTACHED, FACING THE CORNER UNLESS OTHERWISE NOTED. ALL NEW BEARING TREES HAVE A PLASTIC WASHER (STAMPED "SURVEY MARKER DO NOT REMOVE") ATTACHED BY AN ALUMINUM NAIL TO THE SIDE CENTER OF THE TREE FOR DISTANCE MEASUREMENT, UNLESS OTHERWISE NOTED.

THIS RESTORATION WAS PERFORMED AT THE DIRECTION AND APPROVAL OF THE BENTON COUNTY SURVEYOR *flm*

FIRM/AGENCY: BENTON COUNTY SURVEYOR'S OFFICE
 ADDRESS: 360 S.W. AVERY AVE., CORVALLIS, OR 97333; PH. 541-766-6821
 PRESENT: DAVID L. MALONE, P.L.S. AND BERNARD ALTENBACH, SURVEY TECH.
 EQUIPMENT: NIKON NIVO3.C WITH SURVEY PRO ONBOARD.

REGISTERED
PROFESSIONAL
LAND SURVEYOR

02/02/15 David L. Malone

OREGON
JANUARY 12, 1999
DAVID L. MALONE
51523

RENEWAL DATE: 12/31/16

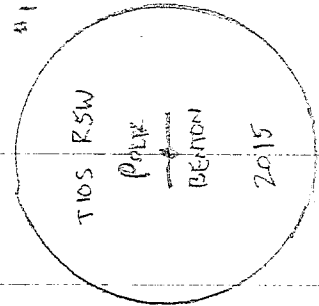
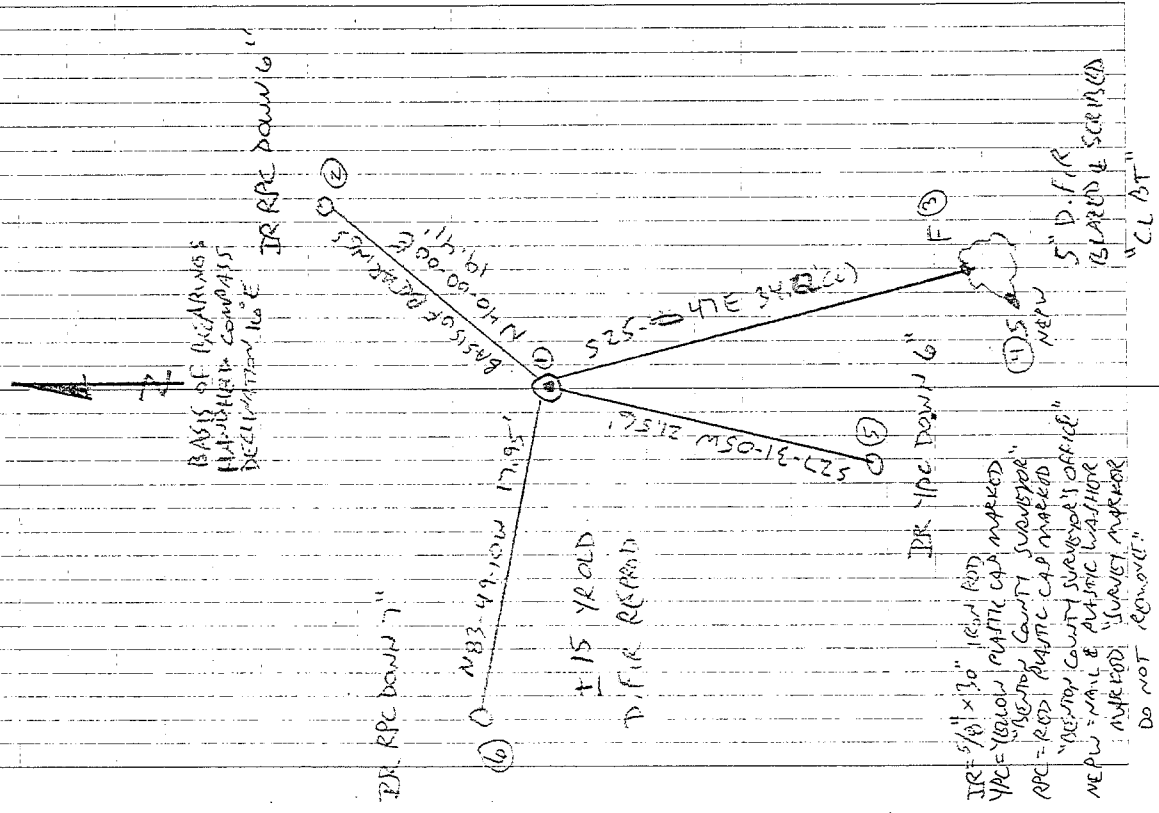
30/20

1/30/2015
D. MALONE
B. ATTR. BARKH

COND. 1.1111
NIKON NIVOLIC
SURVEY PRISM COMPACTED

REMONUMENT T105 RSW COUNTY LINE

FO 1 1/2" INNER DIAMETER IRON PIPE, FIRMLY
SET, UP 10" ABOVE GROUND SURFACE, W/ FLARED
TOP, CEMENTED 3-1/4" BRASS DISK IN THE TOP.
THIS MONUMENT HAS NO RECORD OF ACCESSORIES.
SET 3 NEW IRON ROD ACCESSORIES, BLAZED
& SURVIVED 1 NEW BEARING TREE, SET 6' ORANGE
CERAMITE "SURVEY MARKER" POST 1' NORTH
OF NEW MONUMENT.



3-1/4" BRASS DISK