

CORNER FILE TRACKING

H:\Survey\Corners\Misc\Filetrac.doc

11/23/98

CORNER NUMBER
105300140

STEP	HISTORY(H)	RESTORATION(R2)
Form Prepared, DB	9/13/00	9/13/00
Field Inspection, DB	N/A	N/A
Form Checked, DB	10/10/00	10/10/00
Form Edited, DB	"	"
Form Signed, DB	10/11/00	10/11/00
Authorize Payment, DB	—	—
Archive Digital Files	11/8/00	11/8/00
Collect Documents	"	"
Scanned	11-9-00	11-9-00
Copy For Filming		
Filed, DB		
Finish index (count unit)		
Filmed (Archived), DB		

(DB) = Entry needed in database (Access).

COMMENTS:

INITIAL ✓

11/8/00 - READY TO SCAN INTO A NEW FILE

CORNER HISTORY		T 10 S, R 5 W		SECTION 32 D.L.C.		CORNER E 1/4 CORNER		# 300140	
NO.	DATE	SOURCE	SURVEYOR	MONUMENTS AND ACCESSORIES			COMMENTS		
1	5/31/1882	ORIG. GLO	GEORGE MERCER	SET POST + MKD. STONE @ 2 BT'S, MEAS. TO FACE					1
2	10/24/1910	CS#109 NOTES	J. A. GANDON	FND. BOTH BT'S, SET STK. FB 7/24					2
3	-	CS#109 MAP	" "	OAK STK., REC. OF PLATS #3/04					3
4	-	" " "	" "	OAK STK. @ 4 BT'S, 2 ORIG.					4
5	-	OLD COR. REST. BK. #1, PG. 40	" "	FND. BOTH BT'S SET STK. @ 2 NEW BT'S					5
6	-	REST. 244	-	TRANS. FROM REC. [04] + CONTAINS E + OR O					6
7	-	STARKER NOTES	BRUCE STARKER	FND BOTH ORIG. BT'S, SET PIPE @ FNL. COR @ 2 NEW BT'S			WHERE ARE JAG'S BT'S?		7
8	-	REST. 244	-	TRANS. FROM REC. [07] & MAY CONTAIN E + O					8
9	1983	STARKER MAP	STARKER FORESTS	FND REC [07] PIPE + BT'S, SET WHITE POST					9
									10
									11
									12
									13
									14
									15
									16
									17
									18
									19
									20
									21
									22
									23
									24
									25
									26
									27
									28
									29
									30
									31

1-20
24470
@ B. 1/1880

✓ Cov. secs 32+33 Tp 10 S R 5 W Tplinc
 Set a fir stake 4x4x36" for cov. from which
 a fir 16" dia. brs. S 72° 25' E 22.5 lks. dist.
 Both original trees, dogwood nearly dead.

✓ 1/4 cov. secs. 32+33 Tp. 10 S. R. 5 W.
 Set 4x4x30" Oak stake for cov. from which
 a Fir 6" dia brs. S 89° 20' E 47.4 lks. dist.
 " " 5" " " South 97.7 " " "
 Both original stumps.

✓ 1/4 cov. secs. 33+34 Tp 10 S R 5 W
 Set a stone 6x8x10" for cov. from which
 a Oak 4" dia brs N 79° 20' E 214.8 lks. dist.
 S.E. and S.W. original oaks standing.

✓ 1/4 cov. 28+33 Tp. 10 S. R. 5 W.
 Set Stone 6x6x8" for cov. from which
 an Oak 4" dia brs. N 89° E 304.5 lks. dist.
 N.W. and S.E. original trees standing.

✓ Sec. cov. secs 27-28-33+34 -10-5.
 Set stone 4x8x10" with 4x4x30" Oak stake for cov.
 All four original stumps, no trees marked
 this cov in burn with no living trees within
 + 1. + 14 "

FOR ADDITIONAL INFORMATION SEE THE T105 R5W FILE IN THE CORNER RESTORATION CORRESPONDENCE FILE DRAWER. (CJL 7/2/90).

244

$\frac{1}{4}$ -Corner sections 32 & 33, Twp. 10 S R 5 W

Reestablishment by W. C. Galloway

July, 1912

Set 4 x 4 x 30" Oak stake for corner
Fir 6" in diam bears S 89° 20' E 47.4 lks dist.
Fir 5" in diam bears South 97.7 lks dist
Both original stumps

By Bruce Starker 1954
Found orig. 10" Fir down, No stone, also found rotted stump.
Set 1 $\frac{1}{2}$ " iron pipe 48 links
Fir stump 26" bears S 02° E
Fir 20" N 81° 30' W 55.1 links #310 S 32 BT bark scribed

SEE T105 R5W FILE IN THE CORNER RESTORATION CORRESPONDENCE FILE DRAWER

~~(CJL)~~ FOR ADDITIONAL INFORMATION (CJL 7/2/90).

Bruce Starker
Forester
Corvallis, Oregon

C.C. Hanson
Benton County Surveyor
Corvallis, Oregon

Dear Curtis:

At the closing corner on the South boundary of T 10 S,
R 5 W common to sections 32 and 33, and adjoining section 5 in
T 11 S, R 5 W, W.M. I found a Dead fir with plain BT scribes
facing southerly which I assume is original from age of face,
I set stake for corner and mark the following new accessories:

SEE COR. REST. NO. 243
(CJL 7/2/90)

Dogwood 6", N 73°E 36.4 links slope"#310 S33 BT"
Fir 48" S 86°E 81.9 links slope"#310 S33 BT"
Square spike in Fir Stump 54" S 16° W, 73.6 links slope
Yew 5" N 36½°W 55 links " # 310 S32 BT "

Also drove square spike in West side original fir
bearing tree at 20 links

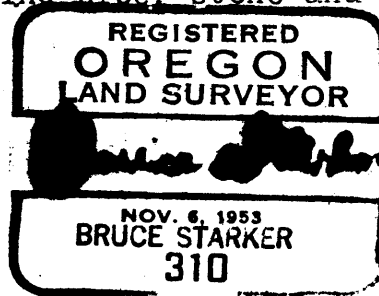
At the quarter corner common to sections 32 and 33 in
T 10 S, R 5 W, W.M. I find original Fir 10"(now 26") down(windfall)
scribes plainly visible after shopping in correct number of
rings. No Stone, but found, rotted stub corresponding to
original Fir 8" S 78° 10 links. I set:(at fence corner):

SEE COR. REST. NO. 244
(CJL 7/2/90)

1½" iron pipe (boiler tube) for corner from which:
Fir stump 26" bears S 02° E 48 links (spike East)
Fir 20" N 81°30'W 55.1 lks"#310 S 32 BT"bark scribed.

At Section corner 29-29-32-33 I find pipe, stone and maple
as described.

SEE COR. REST. NO. 239 (CJL 7/2/90)



SOAP CREEK
SECTION PLAT SHEET

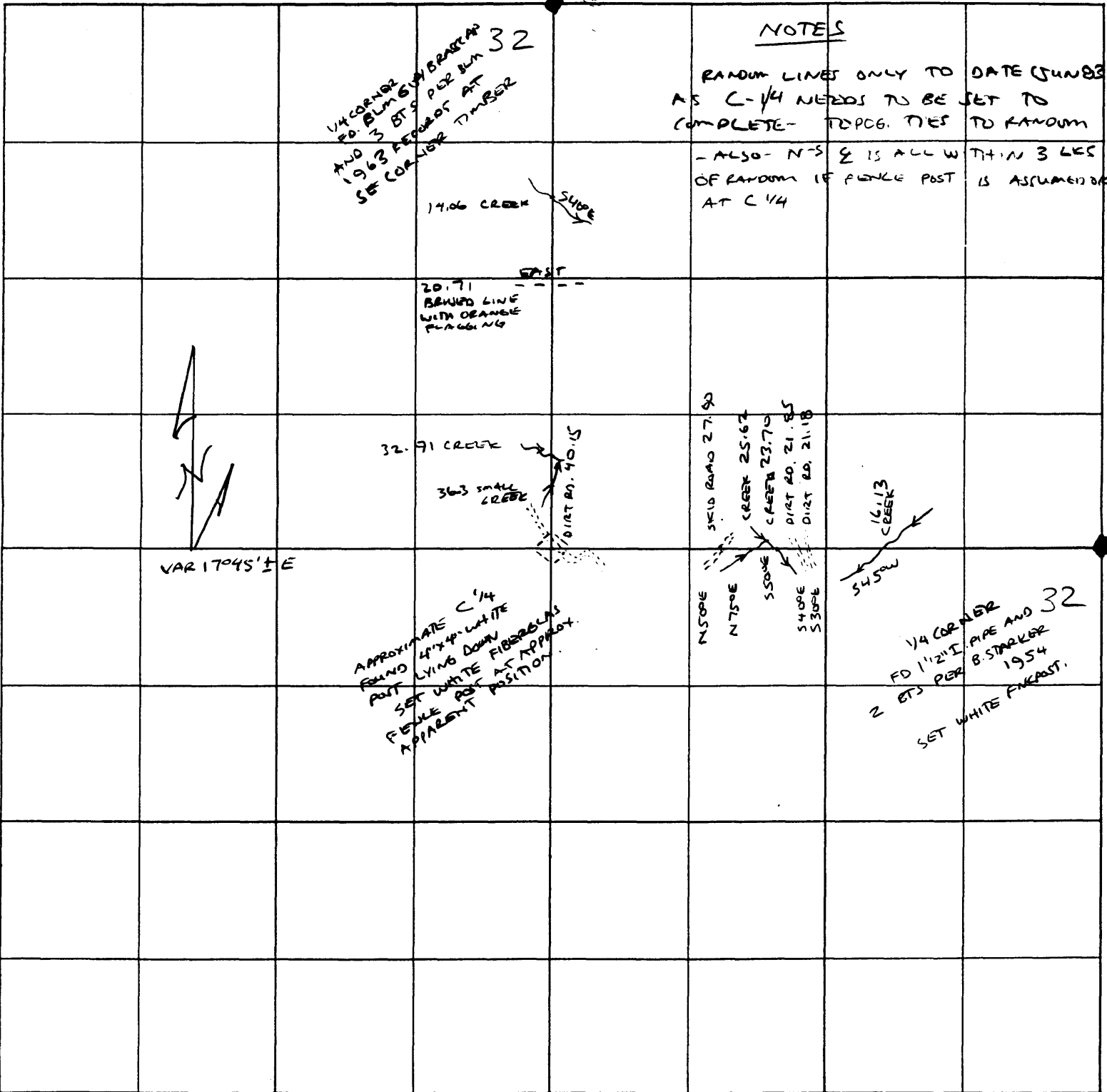
9

OWNER STARKER FORESTS

DATE RUN MAY 4-9, 1983
A. BLACHLY, J. YOUNG
OUTRIG SURVEY
MAPPED JUNE 8, 1983
A. BLACHLY

SECTION 32 TOWNSHIP 10 S. RANGE 5 W. W.M.

COUNTY BENTON STATE OREGON SCALE 1"=10 CHAINS=660 FT.



DATE 09/11/2000

TOWNSHIP 10 SOUTH, RANGE 05 WEST, WILLAMETTE MERIDIAN; SECTION 32 CORNER E 1/4
DONATION LAND CLAIM _____ CORNER _____

COMMON CORNER(S):

THE WEST QUARTER CORNER OF SECTION 33.

RECORDS (INFORMATION IN BOLD ITALICS IS COUNTY STAFFS' INTERPRETATION OF THE RECORD)

- [01] ORIGINAL GLO SURVEY BY GEORGE MERCER, D.S., APPROVED MAY 31, 1882. **SET POST AND MARKED STONE WITH 2 BEARING TREES, MEASURED TO THE FACE.**
- [02] COUNTY SURVEY NO. 189 NOTES (FIELD BOOK NO. 7, PAGE 24) BY J. A. GANONG, D.C.S., DATED OCTOBER 24, 1910. **FOUNF BOTH BEARING TREES, SET A STAKE.**
- [03] COUNTY SURVEY NO. 189 MAP (RECORD OF PLATS BOOK NO. 3, PAGE 84), BY J. A. GANONG, NO DATE GIVEN. **OAK STAKE.**
- [04] COUNTY SURVEY NO. 189 MAP, BY J. A. GANONG, NO DATE GIVEN. **OAK STAKE WITH 4 BEARING TREES, 2 ORIGINAL.**
- [05] OLD CORNER RESTORATION BOOK NO. 1, PAGE 40, BY J. A. GANONG, NO DATE GIVEN. **FOUND BOTH BEARING TREES, SET A STAKE WITH 2 NEW BEARING TREES.**
- [06] CORNER RESTORATION NO. 244. **THIS IS A TRANSCRIBED COPY OF RECORD [04] AND CONTAINS ERRORS AND/OR OMISSIONS.**
- [07] STARKER NOTES BY BRUCE STARKER, P.L.S., NO DATE GIVEN. **FOUND BOTH ORIGINAL BEARING TREES, SET A PIPE AT THE FENCE CORNER WITH 2 NEW BEARING TREES.**
- [08] CORNER RESTORATION NO. 244. **THIS IS A TRANSCRIBED FROM RECORD [07] AND MAY CONTAIN ERROES AND OMISSIONS.**
- [09] STARKER MAP BY STARKER FORESTS, DATED 1983. **FOUND THE RECORD [07] PIPE AND BEARING TREES. SET A WHITE POST.**

COMMENTS/LOCATION/ETC:

NOTES:

THIS IS A MICROSOFT WORD 97 DOCUMENT NAMED "05300140" CREATED FROM A BOILER PLATE DOCUMENT NAMED "HISTORY", WHICH HAS A STYLESHEET NAMED "CORNER" ATTACHED TO IT.

FIRM/AGENCY: BENTON COUNTY SURVEYOR'S OFFICE
ADDRESS: 360 S.W. AVERY AVE. CORVALLIS OR 97333; PH. 766-6821
RESEARCH BY: CURTIS J. LIESENFELT, P.L.S.
DATA ENTRY BY: SAME

BENTON COUNTY CORNER RESTORATION FORM, PAGE 1 OF 2, 105300140R2

SEE CORNER HISTORY FORM FOR RECORDS ETC.

CORNER RESTORATION FIELD BOOK NUMBER 19 PAGE(S) 25, 26 DATE 09/11/2000
TOWNSHIP 10 SOUTH, RANGE 5 WEST, WILLAMETTE MERIDIAN; SECTION 32 CORNER E 1/4
DONATION LAND CLAIM N/A CORNER _____
CONDITION REPORT _____; REFERENCED OUT _____; RENEWED XX; SURVEYED IN _____

LOCATION AND COMMENTS:

THE CORNER IS LOCATED AT THE NORHTEAST CORNER OF ABOUT AN 8 YEAR OLD CLEARCUT, AT THE WEST END OF A POSTED AND BLAZED LINE, ABOUT 75' SOUTHEASTERLY FROM A GRAVEL ROAD AND 15' SOUTHWESTERLY FROM AN OLD CAT ROAD. TO REACH FROM THE INTERSECTION OF SOAP CREEK ROAD AND BELDEN CREEK ROAD, GO UP BELDEN 0.5 MILES, TURN RIGHT (UPHILL), GO THROUGH THE STARKER GATE, STAY LEFT AT 0.2 AND 0.65 MILES, TURN LEFT AT 0.83 MILES, GO SOUTHERLY 0.1 MILE TO THE CORNER ON THE LEFT. IT IS POOR FOR PREMARKING, BUT MAY BE OK FOR GPS.

MONUMENTS AND ACCESSORIES FOUND (CONDITION AND SOURCE):

FOUND: 1 3/4" X 14" RUSTED IRON PIPE, LEANIG WESTERLY FOR THE CORNER. THE TOP 6" WAS RUSTED OFF AND LAYING NEAEBY.
(SET 1 1/2" IRON PIPE (BOILER TUBE) PER RECORD [07]).
(FOUND 1 1/2" PIPE PER RECORD [09]).

FOUND: A PIECE OF D. FIR LAYING HORIZONTALLY AS PART OF A ROTTEN TREE, WITH THE SCRIBING "S BT" VISIBLE. THE BASE OF THIS TREE IS NEAR THE RECORD [01] POSITION FOR THE NORTHWEST BEARING TREE. IT COULD NOT BE DETERMINED WHERE THIS TREE STOOD.

FOUND: A MOSTLY ROTTED D. FIR STUMP ABOUT 18" IN DIAMETER, WITH POTENTIAL AXE WORK, BEARS S 1°03'E~71.7'. THIS WAS CONSIDERED AND REJECTED AS THE RECORD [05] SOUTHERLY BEARING TREE. A THOROUGH SEARCH FOR THE RECORD [01] MARKED STONE WAS CONDUCTED NORTH~64.5' FROM THIS TREE WITHOUT SUCCESS.
(5" FIR, SOUTH~64.48' PER RECORD [05]).

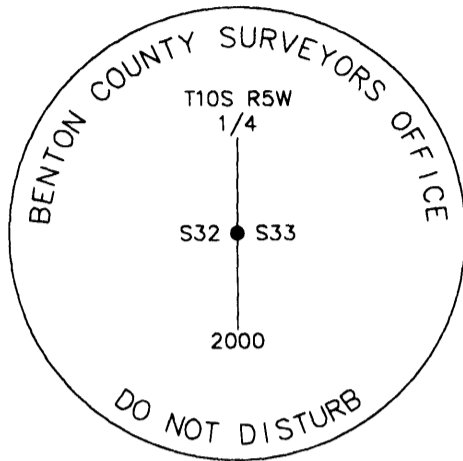
FOUND: 24" MOSTLY ROTTED D. FIR STUMP, BARK SCRIBED "S" BEARS S 2°15'E~31.5'.
(26" FIR STUMP, S 2°E~31.7' PER RECORD [07]).

THE REMAINING BEARING TREES FROM RECORDS [01], [04], [05] AND [07] WERE SEARCHED FOR WITHOUT SUCCESS.

MONUMENT SET (PROCEDURES AND DESCRIPTION):

SET: 2 " INSIDE DIAMETER X 36" LONG IRON PIPE WITH A 3 1/4" BENTON COUNTY BRASS DISC, STAMPED AS SHOWN, CEMENTED IN THE TOP, CENTERED OVER THE BASE OF THE RECOVERED PIPE. BURIED BOTH PIECES OF PIPE ALONG THE NORTHERLY SIDE OF THE NEW MONUMENT. THE RECORD [01] MARKED STONE AND THE RECORD [02] OAK STAKE WERE SEARCHED FOR BY CAREFULLY EXCAVATING A 3' DIAMETER AREA AROUND THE OLD PIPE TO A DEPTH OF 18".

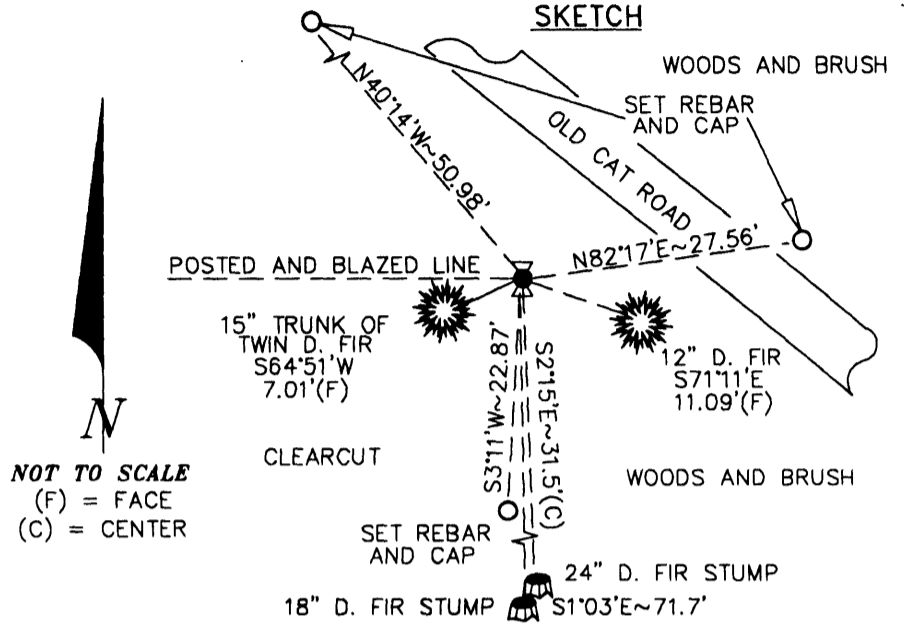
MONUMENT DETAIL



3 1/4" BRASS DISC

THE BEARINGS ARE BASED ON AN HOUR ANGLE SOLAR OBSERVATION TAKEN AT THE CORNER.

SKETCH



NEW ACCESSORIES:

- A 12" D. FIR FACE SCRIBED "1/4S33BT" BEARS S 71°11'E~11.09' (SIDE CENTER IS 11.6')
- THE 15" NORTHEASTERLY TRUNK OF A TWIN D. FIR WAS FACE SCRIBED "1/4S32BT" BEARS S 64°51'W~7.01' (SIDE CENTE IS 7.6').
- SET: REBAR (SEE NOTES) 7" BELOW GROUND SURFACE, STAMPED "NW RP" BEARS N 40°14'W~50.98'. REBAR IS 29' SOUTHEASTERLY FROM THE CENTERLINE OF A GRAVEL ROAD.
- SET: REBAR (SEE NOTES) 8" BELOW GROUND SURFACE, STAMPED "NE RP" BEARS N 82°17'E~27.56'. REBAR IS 10' NORTH-NORTHEASTERLY FROM THE CENTERLINE OF AN OLD CAT ROAD.
- SET: REBAR (SEE NOTES) 7" BELOW GROUND SURFACE, STAMPED "S RP" BEARS S 3°11'W~22.87'. REBAR IS ON THE WESTERLY EDGE OF A CLEARCUT.
- SET: ORANGE FIBERGLASS "SURVEY MARKER" POST 1' NORTHERLY.

NOTES:

COMPASS DECLINATION IS 20° EAST. ALL MEASURED DISTANCES AND BEARINGS ARE TO THE CENTER OF THE OBJECT, UNLESS OTHERWISE NOTED. ALL BEARING TREES ARE PAINTED AND HAVE A B.T. TAG ATTACHED, FACING THE CORNER UNLESS OTHERWISE NOTED. ALL NEW BEARING TREES HAVE A PLASTIC WASHER (STAMPED "BENTON COUNTY SURVEYOR CORNER RESTORATION") ATTACHED (BY ALUMINUM NAIL) TO THE FACE, BELOW THE "BT" FOR DISTANCE AND ANGLE MEASUREMENT UNLESS OTHERWISE NOTED. ALL SET REBAR ARE 5/8" X 30" AND HAVE A 1 3/4" RED PLASTIC CAP (MARKED "BENTON COUNTY SURVEYOR'S OFFICE") ATTACHED TO THE TOP.

THIS DOCUMENT WAS NAMED AND CREATED IN A MANNER SIMILAR TO THE HISTORY FORM. THE NAME OF THE BOILER PLATE IS "MONUMENT". THE SKETCH IS FROM AUTOCAD RELEASE 14.

THIS RESTORATION WAS PERFORMED AT THE DIRECTION AND APPROVAL OF THE BENTON COUNTY/DEPUTY COUNTY SURVEYOR. RW

FIRM/AGENCY: BENTON COUNTY SURVEYOR'S OFFICE
ADDRESS: 360 S.W. AVERY AVE. CORVALLIS OR 97333; PH. 766-6821
SURVEYOR: CURTIS J. LIESENFELT, P.L.S.
SURVEY CREW: SAME

**REGISTERED
PROFESSIONAL
LAND SURVEYOR**

Curtis J. Liesenfelt

OREGON
JULY 17, 1986
CURTIS J. LIESENFELT
2213

LICENSE RENEWAL 12/31/2000