

105300500

CORNER FILE TRACKING

CORNER NUMBER
105300500

STEP	HISTORY	RESTORATION
Form Prepared, DB	6/06/23	6/23/23
Field Inspection, DB	6/06/23	6/06/23
Finish index (count unit)	6/06/23	6/06/23
Counter Index	6/06/23	6/06/23
GIS Index Form	6/06/23	6/06/23
Checked, DB	6/27/23	6/27/23
Form Edited, DB	7/3/23	7/3/23
Form Signed, DB	7/3/23	7/3/23
Authorize Payment, DB	—	—
Archive Digital Files	7/3/23	7/3/23
Collect Documents	7/3/23	7/3/23
PDF File	7/3/23	7/3/23
Copy For Filming	7/3/23	7/3/23
Scanned (pdf to laserfiche)	7/3/23	7/3/23
Filmed (Archived), DB		
Filed, DB		

(DB) = Entry needed in database (Access).

COMMENTS:

DATE 06/06/2023TOWNSHIP 10 SOUTH, RANGE 5 WEST, WILLAMETTE MERIDIAN; SECTION 8 CORNER SOUTHEAST
DONATION LAND CLAIM NONE CORNER NONE**COMMON CORNER(S):**SOUTHWEST CORNER SECTION 9
NORTHWEST CORNER SECTION 16
NORTHEAST CORNER SECTION 17**RECORDS (INFORMATION IN *BOLD ITALICS* IS COUNTY STAFFS' INTERPRETATION OF THE RECORD)**

BASED ON EXTENSIVE RESEARCH AND RECOVERY OF EVIDENCE, THIS OFFICE HAS DETERMINED THAT MOST GENERAL LAND OFFICE SURVEYORS IN BENTON COUNTY BEFORE 1890 MEASURED TO THE FACE OF BEARING TREES.

- [01] GENERAL LAND OFFICE (GLO) NOTES BY ROBERT ELDER, D.S., DATED MARCH 10, 1853. *SET POST FROM WHICH A W. OAK 24" DIA BEARS N80°W, 229 LINKS (151.14 FEET); A W. OAK 13" DIA BEARS S45°W, 70 LINKS (46.20 FEET); A W. OAK 12" DIA BEARS S80°E, 131 LINKS (86.46 FEET); A W. OAK 14" DIA BEARS N34°E, 308 LINKS (203.28 FEET).*
- [02] OREGON STATE UNIVERSITY RESEARCH FORESTS CORNER CONDITION REPORT BY DAVID B. RYLAND, DATED MAY 3, 1993. *NO MONUMENTATION FOUND. NO ACCESSORIES FOUND.*
- [03] SURVEY BY BRIAN M. PETERSON, P.L.S., DATED NOVEMBER 1, 2022, REVIEWED BY BENTON COUNTY BUT NOT YET FILED. *SET 3/4" X 30" IRON PIPE WITH PLASTIC CAP MARKED "LS 60065" AT DOUBLE PROPORTION POSITION. SET 5/8" X 30" IRON ROD WITH PLASTIC CAP MARKED "LS 60065" BEARS S21°00'E, 53.47 FEET.*

FIRM/AGENCY: BENTON COUNTY SURVEYOR'S OFFICE
ADDRESS: 360 S.W. AVERY AVE. CORVALLIS OR 97333; PH. 766-6821
RESEARCH BY: DAVID L. MALONE, P.L.S.
DATA ENTRY BY: SAME

BENTON COUNTY CORNER RESTORATION FORM, PAGE 1 OF 2, 105300500R1

SEE CORNER HISTORY FORM FOR RECORDS ETC.

CORNER RESTORATION FIELD BOOK NUMBER 34 PAGE(S) 13 DATE 06/06/2023
TOWNSHIP 10 SOUTH, RANGE 5 WEST, WILLAMETTE MERIDIAN; SECTION 8 CORNER SOUTHEAST
DONATION LAND CLAIM N/A CORNER N/A
CONDITION REPORT ; REFERENCED OUT ; RENEWED X; SURVEYED IN

LOCATION AND COMMENTS:

CORNER IS LOCATED ON A MODERATE SOUTHEAST FACING SLOPE IN A STAND OF ±70 YEAR OLD D. FIR THAT IS ABOUT TO BE LOGGED. TO REACH CORNER FROM THE INTERSECTION OF TAMPICO ROAD AND WILES ROAD, FOLLOW TAMPICO ROAD NORTHWESTERLY FOR 2.78 MILES TO THE OSU FORESTS 100 ROAD ON THE LEFT. FOLLOW THE 100 ROAD FOR 0.39 MILES TO A WYE, STAY RIGHT FOR 0.48 MILES TO A WYE, STAY RIGHT FOR 0.06 MILES TO A WYE, STAY RIGHT FOR 0.01 MILES TO A WYE, STAY RIGHT FOR 0.31 MILES TO A WYE WITH THE 191 ROAD, TURN LEFT FOR 0.04 MILES AND PARK. WALK NORTH-NORTHWEST ABOUT 70 FEET TO THE CORNER. CORNER IS BAD FOR PREMARKING AND GPS CONTROL.

MONUMENTS AND ACCESSORIES FOUND (CONDITION AND SOURCE):

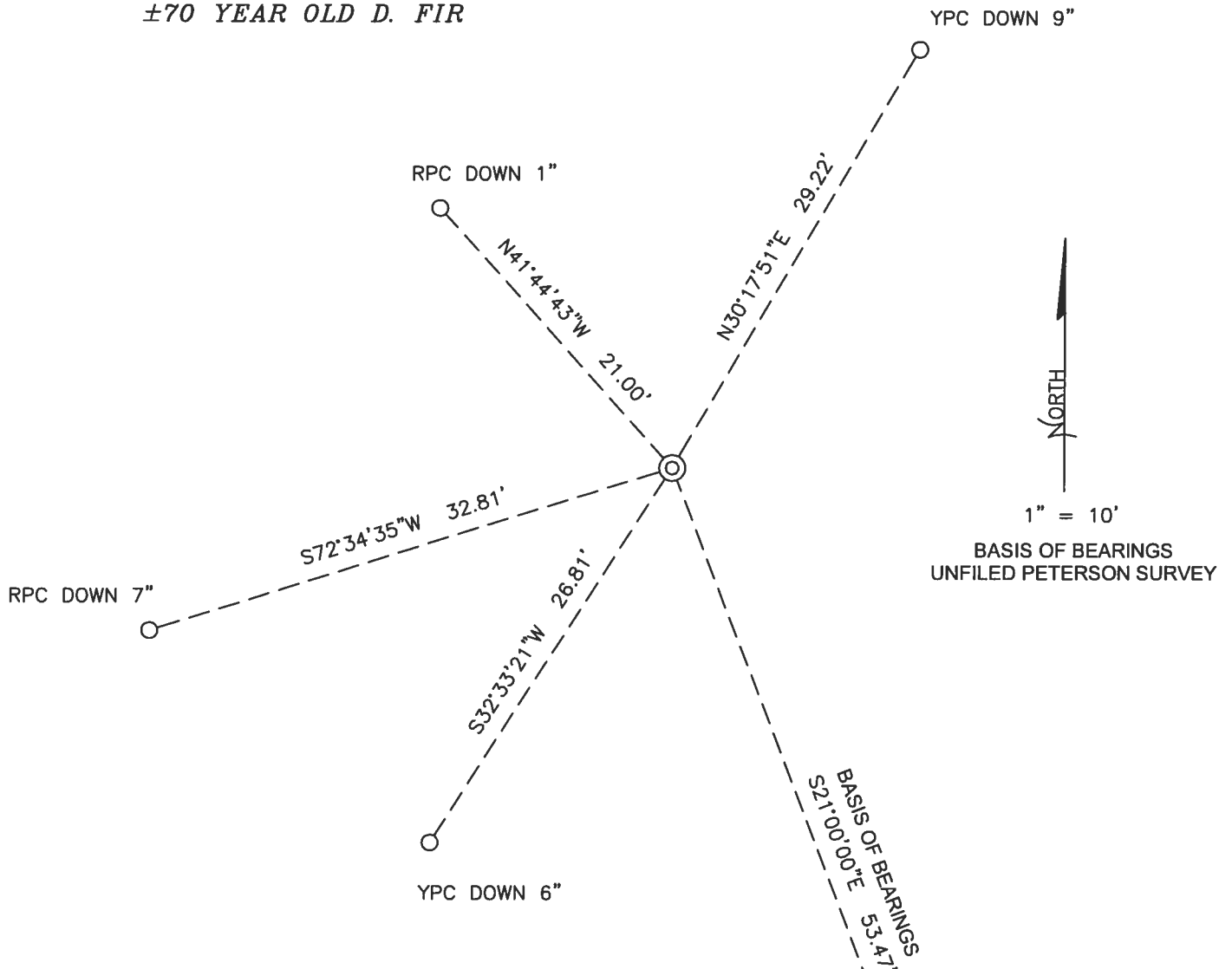
1. FOUND 3/4" X 30" IRON PIPE WITH ORANGE PLASTIC CAP MARKED "LS 60065", FIRMLY SET AND UNDISTURBED, UP 11" ABOVE GROUND SURFACE, FOR THE CORNER.
(SET POST AS PER RECORD [01]).
(SET 3/4" X 30" IRON PIPE WITH PLASTIC CAP MARKED "LS 60065" AT DOUBLE PROPORTION POSITION AS PER RECORD [03]).
2. FOUND 5/8" IRON ROD WITH ORANGE PLASTIC CAP MARKED "LS 60065" BEARS S21°00'00"E, 53.47 FEET. HELD FOR BASIS OF BEARINGS FOR THIS RESTORATION.
(SET 5/8" X 30" IRON ROD WITH PLASTIC CAP MARKED "LS 60065" BEARS S21°00'E, 53.47 FEET AS PER RECORD [03]).

MONUMENT SET (PROCEDURES AND DESCRIPTION):

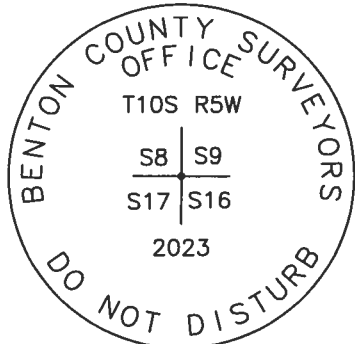
FOUND 3/4" X 30" IRON PIPE WITH ORANGE PLASTIC CAP MARKED "LS 60065", FIRMLY SET AND UNDISTURBED, UP 11" ABOVE GROUND SURFACE, FOR THE CORNER. THE IRON PIPE WAS SET IN 2022 BY BRIAN M. PETERSON, P.L.S., USING DOUBLE PROPORTION TO POSITION THE CORNER POSITION, AS SHOWN IN A SURVEY SUBMITTED FOR REVIEW BY BENTON COUNTY BUT NOT YET FILED. BENTON COUNTY HAD PREVIOUSLY DETERMINED THE ORIGINAL CORNER POSITION TO BE LOST. THE IRON PIPE IS ACCEPTED AS THE PROPER REESTABLISHMENT OF THE CORNER POSITION.

REMOVED THE IRON PIPE FROM THE AREA AND IN THE SAME HORIZONTAL POSITION SET A 2" X 31-1/2" GALVANIZED IRON PIPE WITH A 3-1/4" BRASS DISK STAMPED AS SHOWN ON PAGE 2 OF 2, CEMENTED IN THE TOP, UP 3" ABOVE GROUND SURFACE. FOUND GREEN METAL "T" POST WESTERLY 6". SET FOUR NEW IRON ROD ACCESSORIES AS SHOWN ON PAGE 2 OF 2. SET 6 FOOT ORANGE CARSONITE "SURVEY MARKER" POST 1 FOOT NORTH OF BRASS DISK.

±70 YEAR OLD D. FIR



MONUMENT DETAIL



3-1/4" BRASS DISK

±70 YEAR OLD D. FIR

LEGEND

- SET 5/8" X 30" REBAR WITH PLASTIC CAP
 - YPC YELLOW PLASTIC CAP MARKED "BENTON COUNTY SURVEYOR"
 - RPC RED PLASTIC CAP MARKED "BENTON COUNTY SURVEYOR"
 - FOUND MONUMENT AS NOTED
 - ⊙ GOVERNMENT MONUMENT SET AS SHOWN
- FOUND 5/8" IRON ROD WITH ORANGE PLASTIC CAP MARKED "LS 60065" AS PER UNFILED PETERSON SURVEY

NEW ACCESSORIES:

1. SET REBAR (SEE LEGEND) N30°17'51"E, 29.22 FEET AND 9 INCHES BELOW GROUND LEVEL.
2. SET REBAR (SEE LEGEND) S32°33'21"W, 26.81 FEET AND 6 INCHES BELOW GROUND LEVEL.
3. SET REBAR (SEE LEGEND) S72°34'35"W, 32.81 FEET AND 7 INCHES BELOW GROUND LEVEL.
4. SET REBAR (SEE LEGEND) N41°44'43"W, 21.00 FEET AND 1 INCHES BELOW GROUND LEVEL.

NOTES:

COMPASS DECLINATION IS 15° EAST. ALL MEASURED DISTANCES AND BEARINGS ARE TO THE CENTER OF THE OBJECT, UNLESS OTHERWISE NOTED. ALL BEARING TREES ARE PAINTED AND HAVE A B.T. TAG ATTACHED, FACING THE CORNER UNLESS OTHERWISE NOTED. ALL NEW BEARING TREES HAVE A PLASTIC WASHER (STAMPED "SURVEY MARKER DO NOT REMOVE") ATTACHED BY AN ALUMINUM NAIL TO THE SIDE CENTER OF THE TREE FOR DISTANCE MEASUREMENT, UNLESS OTHERWISE NOTED.

THIS RESTORATION WAS PERFORMED AT THE DIRECTION AND APPROVAL OF THE BENTON COUNTY SURVEYOR *[Signature]*

REGISTERED PROFESSIONAL LAND SURVEYOR

FIRM/AGENCY: BENTON COUNTY SURVEYOR'S OFFICE
 ADDRESS: 360 S.W. AVERY AVE., CORVALLIS, OR 97333; PH. 541-766-6821
 PRESENT: DAVID L. MALONE, P.L.S., BERNARD ALTENBACH, SURVEY TECH., AND FINN LEARY, OSU FOREST ENGINEER
 EQUIPMENT: NIKON NIVO3.C WITH SURVEY PRO ONBOARD.

7/6/23 David L. Malone

OREGON
 JANUARY 12, 1999
 DAVID L. MALONE
 51523

RENEWAL DATE: 12/31/24

105 300 500

REMONUMENT T105 R5W

819
17116

FD 3/4" x 30" DRON PIPE W/ OPC MARKS

"LS GOOBS" UP 11" ABOVE GROUND SURFACE.

FD GREEN METAL "T" POST VERTICALLY 6"

FD STAKE OR SE AND HOLD FOR BASIS

OF COMPONENTS PER RETELEM SURVEY.

RP SET BY DAVIS PROPRIETOR AND ACCOUNT,

SET 4 NOW IRON ROD ACCESSORIES. SET 6

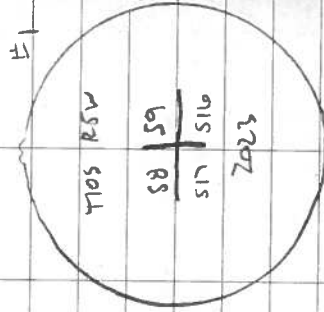
CRANED CARSONITE "SURVEY MARKER" POST

12" NORTH. REMOVED DRON PIPE FROM AREA.

W SAME HORIZONTAL POSITION, SET 2" x 31-1/2"

G.I.P. W/ 3-1/4" BRASS DISK COMBINED IN TOP,

UP 3" ABOVE GROUND.



3-1/4" BRASS DISK

DR = 3/8" x 30" DRON ROD

YR OR RPC = 40mm OR ROD

PLASTIC CAP MARKED

"RENTAL COUNTY SURVEYOR"

NE PLW = WALK AND PLASTIC

WALKING MARKED

"SURVEY MARKER"

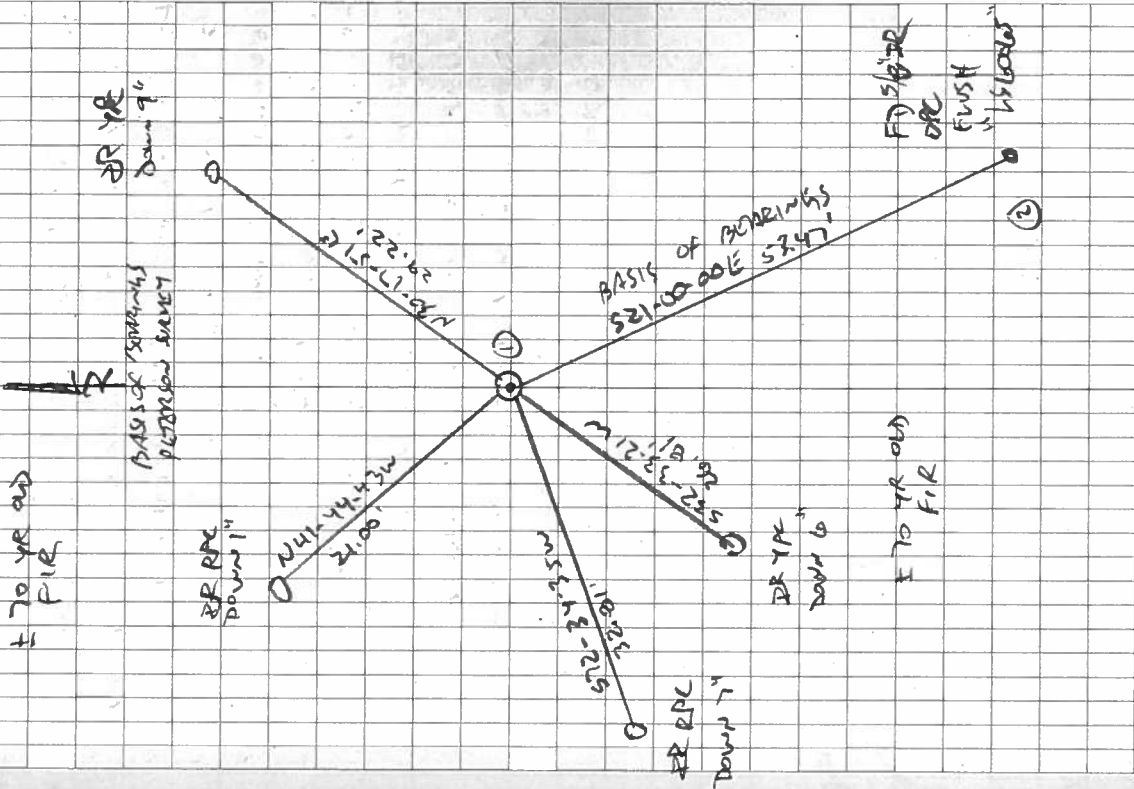
DO NOT REMOVE"

HOT, CORNER

NIKON NIVOS.C
SURVEY ROD ONWARD

6/6/23
D. McLAUGHLIN
B. ALTENBACH
FIND LEGACY

34/13



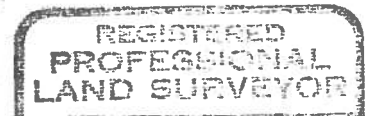
DATE 03/12/2013TOWNSHIP 10 SOUTH, RANGE 5 WEST, WILLAMETTE MERIDIAN; SECTION 8 CORNER SOUTHEAST
DONATION LAND CLAIM NONE CORNER NONE**COMMON CORNER(S):**SOUTHWEST CORNER SECTION 9
NORTHWEST CORNER SECTION 16
NORTHEAST CORNER SECTION 17**RECORDS (INFORMATION IN *BOLD ITALICS* IS COUNTY STAFFS' INTERPRETATION OF THE RECORD)**

BASED ON EXTENSIVE RESEARCH AND RECOVERY OF EVIDENCE, THIS OFFICE HAS DETERMINED THAT MOST GENERAL LAND OFFICE SURVEYORS IN BENTON COUNTY MEASURED TO THE FACE OF BEARING TREES.

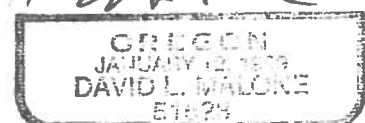
- [01] GENERAL LAND OFFICE (GLO) NOTES BY ROBERT ELDER, D.S., DATED MARCH 10, 1853. *SET POST FROM WHICH A W. OAK 24" DIA BEARS N80°W, 229 LINKS (151.14 FEET); A W. OAK 13" DIA BEARS S45°W, 70 LINKS (46.20 FEET); A W. OAK 12" DIA BEARS S80°E, 131 LINKS (86.46 FEET); A W. OAK 14" DIA BEARS N34°E, 308 LINKS (203.28 FEET).*
- [02] OREGON STATE UNIVERSITY RESEARCH FORESTS CORNER CONDITION REPORT BY DAVID B. RYLAND, DATED MAY 3, 1993. *NO MONUMENTATION FOUND. NO ACCESSORIES FOUND.*

COMMENTS FROM 02/20/2015:

THE QUARTER CORNERS TO THE NORTH, WEST & SOUTH AND THE SECTION CORNER 1 MILE EAST WERE SURVEYED USING GPS SO THAT A POSITION COULD BE CALCULATED TO SEARCH FOR THIS CORNER. TWO CONTROL POINTS IN A CLEAR CUT TO THE NORTHEAST OF THIS CORNER WERE THEN SURVEYED WITH GPS AND A TRAVERSE WAS RUN INTO THE TIMBERED AREA TO THE CALCULATED POSITION. NO EVIDENCE OF THE CORNER COULD BE FOUND. THERE WERE REMAINS OF OAKS NEAR THE CALCULATED POSITIONS OF THE SOUTHWEST AND NORTHEAST BEARING TREES, BUT NOT ENOUGH TO IDENTIFY ANY MARKS, SIZE OF TREES, OR A SPECIFIC LOCATION OF THE TREES. THERE WERE MORE SUBSTANTIAL REMAINS OF AN OAK NEAR THE CALCULATED POSITION OF THE NORTHWEST BEARING TREE, INCLUDING PIECES OF ROOT CROWN, BUT AGAIN NOT ENOUGH TO IDENTIFY ANY MARKS OR A SPECIFIC LOCATION OF THE TREE. THIS AREA HAS BEEN LOGGED IN THE PAST AND THERE MAY HAVE BEEN QUITE A BIT OF GROUND DISTURBANCE WHICH COULD HAVE PUSHED THESE OAK REMAINS AROUND. THIS CORNER HAS BEEN DETERMINED TO BE LOST UNLESS MORE DEFINITIVE EVIDENCE CAN BE LOCATED.



4/27/15



REMOVAL DATE 12/31/16

FIRM/AGENCY: BENTON COUNTY SURVEYOR'S OFFICE
ADDRESS: 360 S.W. AVERY AVE. CORVALLIS OR 97333; PH. 766-6821
RESEARCH BY: DAVID L. MALONE, P.L.S.
DATA ENTRY BY: SAME

RESEARCH FORESTS CORNER CONDITION REPORT

Section B Township 106 Range SW

County BENTON Date 5-3-93

CORNER DESIGNATION South East Corner Section 8

S 8	S 9
S 17	S 16

Previous Renewals/Surveys, etc. _____

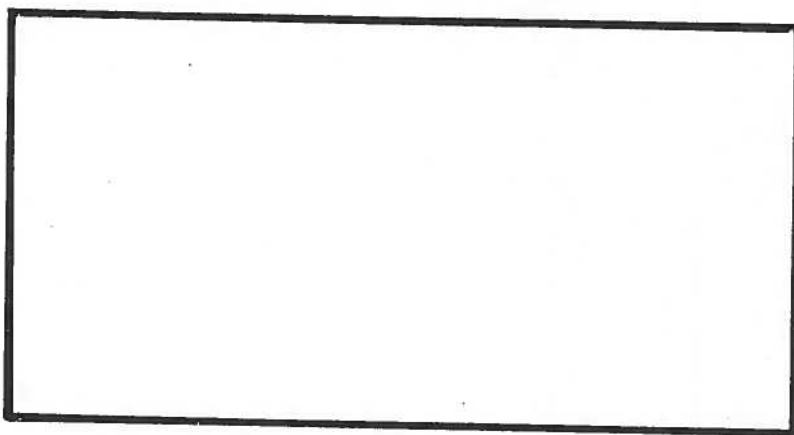
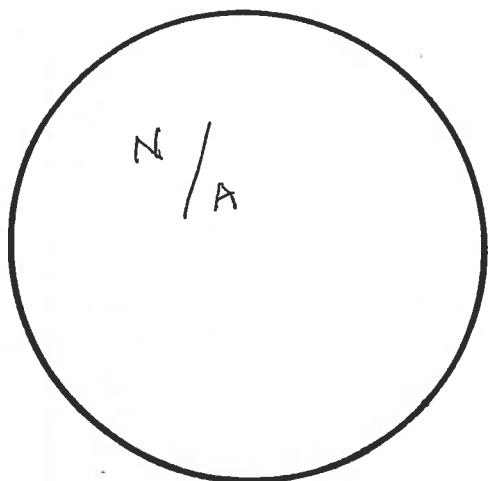
Monument(s) & Accessories Found: (Condition and Source)

NO MONUMENTATION FOUND

NO ACCESSORIES FOUND

Monument Detail

Sketch



MONUMENT AND ACCESSORY CONDITION _____

Location & Comments

Compass Declination 20°E

David B Ryland