

105300540

CORNER FILE TRACKING

S:\Survey Corners\CORNERS\Templates\Filetrac2.doc

10/04/2010

CORNER NUMBER
105300540

STEP	HISTORY	RESTORATION
Form Prepared, DB	3/29/13	2/05/15
Field Inspection, DB	2/04/15	2/04/15
Finish index (count unit)	3/29/13	2/04/15
Counter Index	2/04/15	2/04/15
GIS Index Form	2/05/15	2/05/15
Checked, DB	2/06/15	2/06/15
Form Edited, DB	2/11/15	2/11/15
Form Signed, DB	2/11/15	2/11/15
Authorize Payment, DB	—	—
Archive Digital Files	2/11/15	2/11/15
Collect Documents	2/11/15	2/11/15
PDF File	2/11/15	2/11/15
Copy For Filming	2/11/15	2/11/15
Scanned (pdf to laserfiche)	2/11/15	2/11/15
Filmed (Archived), DB		
Filed, DB		

(DB) = Entry needed in database (Access).

COMMENTS:

DATE 03/29/2013TOWNSHIP 10 SOUTH, RANGE 5 WEST, WILLAMETTE MERIDIAN; SECTION 8 CORNER EAST 1/4
DONATION LAND CLAIM NONE CORNER NONE**COMMON CORNER(S):**

WEST 1/4 SECTION 9

RECORDS (INFORMATION IN BOLD ITALICS IS COUNTY STAFFS' INTERPRETATION OF THE RECORD)

BASED ON EXTENSIVE RESEARCH AND RECOVERY OF EVIDENCE, THIS OFFICE HAS DETERMINED THAT MOST GENERAL LAND OFFICE SURVEYORS IN BENTON COUNTY MEASURED TO THE FACE OF BEARING TREES.

- [01] GENERAL LAND OFFICE (GLO) NOTES BY ROBERT ELDER, D.S., DATED MARCH 10, 1853. *SET POST FROM WHICH A W. OAK 18" DIA BEARS S79°E, 335 LINKS (221.10 FEET); AND A W. OAK 20" DIA BEARS N55-1/4°W, 183 LINKS (120.78 FEET).*
- [02] BENTON COUNTY SURVEY NO. 10157 (OLD NO. 134) FIELD NOTES (FIELD BOOK 50, PAGE 15) BY W.C. GALLOWAY, C.S., DATED OCTOBER 27, 1930. *SET 1-1/4" GALV. PIPE 18" LONG 12" UNDER SURFACE. AN OAK 20" DIA (GLO BT) BEARS S79°E, 3.85 (SIC) CHAINS (254.10 FEET) DOWN; AN OAK 18" DIA (GLO BT) BEARS N55°W, 1.83 CHAINS (120.78 FEET) STANDING, GIRDLED; A FIR 15" DIA BEARS S20-1/2°W, 1.499 CHAINS +3° (98.80 FEET); A FIR 14" DIA BEARS S61-1/2°E, 2.637 CHAINS -4° (173.58 FEET); AND THE COMB OF A HOUSE BEARS N6°40'W.*
- [03] BENTON COUNTY CORNER RESTORATION BOOK NO. 1, PAGE 193, BY W.C. GALLOWAY, C.S., DATED OCTOBER 27, 1930. *SET A 1-1/4" PIPE 12" UNDER SURFACE. AN OAK 20" DIA (GLO BT) BEARS S79°E, 3.85 (SIC) CHAINS (254.10 FEET) LYING DOWN; AN OAK 18" DIA (GLO BT) BEARS N55°W, 1.83 CHAINS (120.78 FEET) STANDING; A FIR 15" DIA (CSBT) BEARS S20°30'W, 1.499 CHAINS (98.93 FEET); A FIR 14" DIA (CSBT) BEARS S61°30'E, 2.63 CHAINS (173.58 FEET); AND THE COMB OF A HOUSE BEARS N6°40'W.*
- [04] BENTON COUNTY CORNER RESTORATION NO. 184. *TRANSCRIBED FROM RECORD [03] AND MAY CONTAIN ERRORS AND/OR OMISSIONS.*
- [05] BENTON COUNTY SURVEY NO. 10157 ROLL MAP BY W.C. GALLOWAY, C.S., NO DATE GIVEN. *1/4" PIPE 12" UNDER SURFACE. OAK 20" DIA (GLO BT) BEARS S79°E, 3.85 CHAINS (254.10 FEET); OAK 18" DIA (GLO BT) BEARS N55°W, 1.83 CHAINS (120.78 FEET); FIR 15" DIA (CSBT) BEARS S20-1/2°W, 1.49 CHAINS (98.34 FEET); FIR 14" DIA (CSBT) BEARS S61-1/2°E, 2.63 CHAINS (173.58 FEET); AND COMB OF HOUSE BEARS N6°40'W.*
- [06] SKETCH MAP IN FILE OF BENTON COUNTY SURVEY NO. 587, NO DRAFTSMAN OR DATE GIVEN. *1/4" PIPE 12" UNDER SURFACE. OAK 20" DIA (GLO BT) BEARS S79°E, 3.85 CHAINS (254.10 FEET); OAK 18" DIA (GLO BT) BEARS N55°W, 1.83 CHAINS (120.78 FEET); FIR 15" DIA (CSBT) BEARS S20°W, 1.49 CHAINS (98.34 FEET); FIR 14" DIA (CSBT) BEARS S61-1/2°E, 2.63 CHAINS (173.58 FEET); AND COMB OF HOUSE BEARS N6°40'W.*
- [07] OREGON STATE UNIVERSITY RESEARCH FORESTS CORNER CONDITION REPORT BY DAVID B. RYLAND, DATED APRIL 30, 1993. *FOUND 1-1/4" PIPE 1 FOOT UNDER GROUND SURFACE. FOUND D. FIR 20" DIA WITH CORNER LOCATION POSTER BEARS S40°W, 4.0 FEET.*

FIRM/AGENCY: BENTON COUNTY SURVEYOR'S OFFICE
ADDRESS: 360 S.W. AVERY AVE. CORVALLIS OR 97333; PH. 766-6821
RESEARCH BY: DAVID L. MALONE, P.L.S.
DATA ENTRY BY: SAME

BENTON COUNTY CORNER RESTORATION FORM, PAGE 1 OF 2, 105300540R2

SEE CORNER HISTORY FORM FOR RECORDS ETC.

CORNER RESTORATION FIELD BOOK NUMBER 30 PAGE(S) 28

DATE 02/04/2015

TOWNSHIP 10 SOUTH, RANGE 5 WEST, WILLAMETTE MERIDIAN; SECTION 8 CORNER EAST 1/4

DONATION LAND CLAIM N/A

CORNER N/A

CONDITION REPORT _____;

REFERENCED OUT _____;

RENEWED X;

SURVEYED IN _____

LOCATION AND COMMENTS:

CORNER IS LOCATED ON A GENTLE NORTH FACING SLOPE IN A STAND OF ± 10 YEAR OLD REPROD PINE TREES. TO REACH CORNER FROM THE INTERSECTION OF TAMPICO ROAD AND DUNN FOREST ROAD 100, DRIVE THROUGH GATE AND FOLLOW ROAD 100 FOR 1.31 MILES TO ROAD 140, TURN RIGHT AND FOLLOW ROAD 140 FOR 0.23 MILES TO ROAD 142 AND PARK. WALK APPROXIMATELY N17°E, 1350 FEET TO THE CORNER. CORNER IS BAD FOR PREMARKING AND POOR FOR GPS CONTROL.

MONUMENTS AND ACCESSORIES FOUND (CONDITION AND SOURCE):

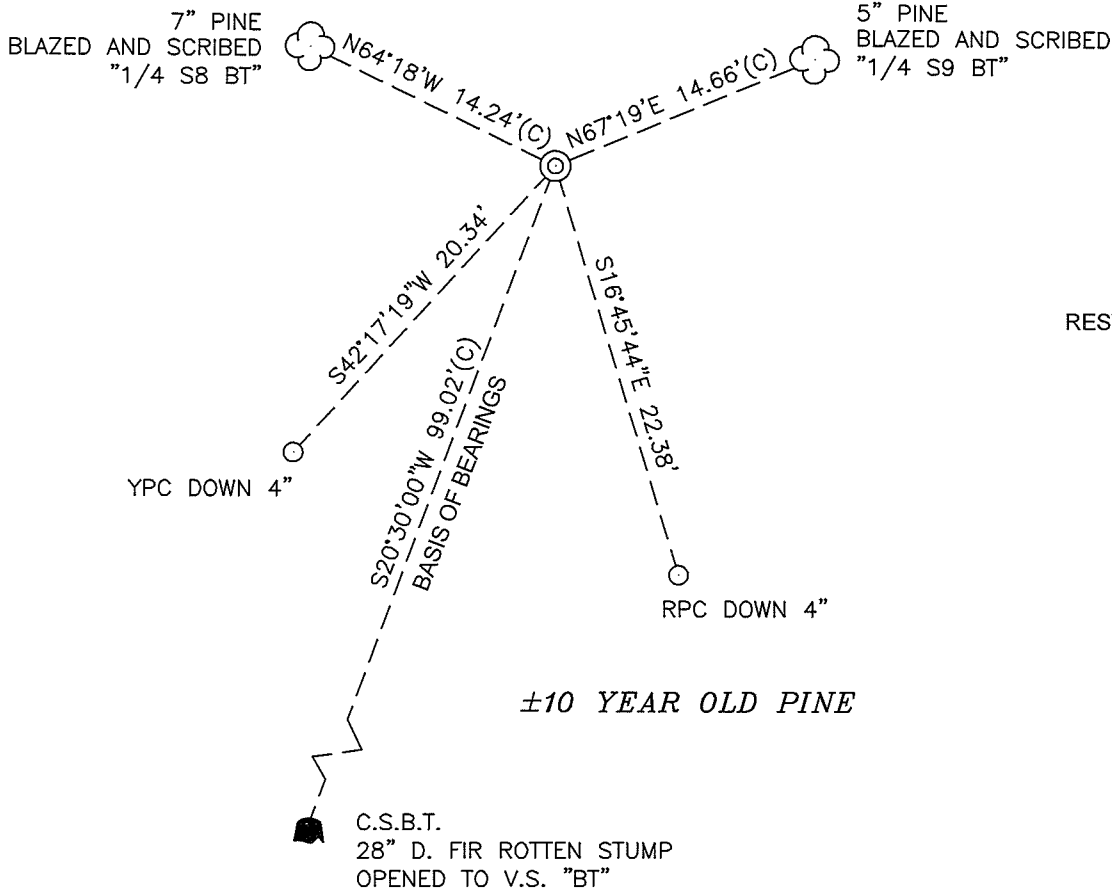
1. FOUND 1-1/4" X 16" INNER DIAMETER GALVANIZED IRON PIPE WITH FLARED TOP, FIRMLY SET, 12" BELOW GROUND SURFACE.
(SET POST PER RECORD [01]).
(SET 1-1/4" GALV. PIPE 18" LONG 12" UNDER SURFACE PER RECORD [02]).
(SET A 1-1/4" PIPE 12" UNDER SURFACE PER RECORD [03]).
(1/4" PIPE 12" UNDER SURFACE PER RECORDS [05] AND [06]).
(FOUND 1-1/4" PIPE 1 FOOT UNDER GROUND SURFACE PER RECORD [07]).
2. FOUND ROTTEN D. FIR STUMP 28" DIA BEARS S20°30'00"W, 99.02 FEET TO CENTER. OPENED TO VISIBLE SCRIBING "BT".
BASIS OF BEARINGS FOR THIS RESTORATION.
(FIR 15" DIA BEARS S20-1/2°W, 1.499 CHAINS +3° [98.80 FEET] PER RECORD [02]).
(FIR 15" DIA BEARS S20°30'W, 1.499 CHAINS [98.93 FEET] PER RECORD [03]).
(FIR 15" DIA BEARS S20-1/2°W, 1.49 CHAINS [98.34 FEET] PER RECORD [05]).
(FIR 15" DIA BEARS S20°W, 1.49 CHAINS [98.34 FEET] PER RECORD [06]).

MONUMENT SET (PROCEDURES AND DESCRIPTION):

FOUND 1-1/4" X 16" GALVANIZED IRON PIPE WITH FLARED TOP, FIRMLY SET, 12" BELOW GROUND SURFACE FOR THE CORNER. THE PIPE WAS SET BY W. C. GALLOWAY, C.S., IN 1930, AS A PERPETUATION OF THE CORNER FROM BOTH GLO BEARING TREES. I HELD THE PIPE AS THE PERPETUATION OF THE CORNER POSITION.

REMOVED THE 1-1/4" IRON PIPE AND IN THE SAME HORIZONTAL POSITION SET A 2" X 31-1/2" GALVANIZED IRON PIPE WITH A 3-1/4" BRASS DISK CEMENTED IN THE TOP, 7" BELOW GROUND SURFACE AND MARKED AS SHOWN ON PAGE 2 OF 2. BURIED THE 1-1/4" IRON PIPE HORIZONTALLY ON THE EAST SIDE OF THE NEW MONUMENT. SET TWO NEW IRON ROD ACCESSORIES AND BLAZED AND SCRIBED TWO NEW BEARING TREES AS SHOWN ON PAGE 2 OF 2. SET A 6 FOOT ORANGE CARSONITE "SURVEY MARKER" POST 1 FOOT EAST OF NEW MONUMENT.

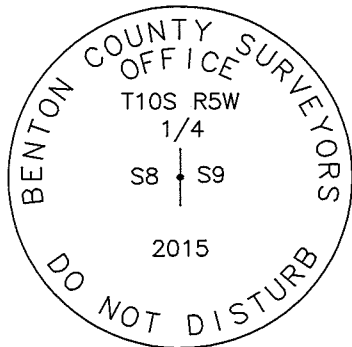
±10 YEAR OLD PINE



1" = 10'

BASIS OF BEARINGS
RESTORATION BOOK 1, PAGE 193

MONUMENT DETAIL



3-1/4" BRASS DISK

LEGEND

- SET 5/8" X 30" REBAR WITH PLASTIC CAP
- YPC YELLOW PLASTIC CAP MARKED "BENTON COUNTY SURVEYOR"
- RPC RED PLASTIC CAP MARKED "BENTON COUNTY SURVEYOR'S OFFICE"
- (C) MEASUREMENT TO CENTER
- ⊙ GOVERNMENT MONUMENT SET AS SHOWN
- V.S. VISIBLE SCRIBING
- C.S.B.T. COUNTY SURVEYOR'S BEARING TREE
- 🌲 BEARING TREE STUMP AS NOTED
- 🌲 BEARING TREE AS NOTED

NEW ACCESSORIES:

1. SET REBAR (SEE LEGEND) S16°45'44"E, 22.38 FEET AND 4 INCHES BELOW GROUND LEVEL.
2. SET REBAR (SEE LEGEND) S42°17'19"W, 20.34 FEET AND 4 INCHES BELOW GROUND LEVEL.
3. PINE 5" DIA BEARS N67°19'E, 14.66 FEET TO CENTER, FACE SCRIBED "1/4 S9 BT". SET ALUMINUM NAIL AND PLASTIC WASHER ON NORTHWESTERLY BASE FOR DISTANCE MEASUREMENT.
4. PINE 7" DIA BEARS N64°18'W, 14.24 FEET TO CENTER, FACE SCRIBED "1/4 S8 BT". SET ALUMINUM NAIL AND PLASTIC WASHER ON NORTHEASTERLY BASE FOR DISTANCE MEASUREMENT.

NOTES:

COMPASS DECLINATION IS 16° EAST. ALL MEASURED DISTANCES AND BEARINGS ARE TO THE CENTER OF THE OBJECT, UNLESS OTHERWISE NOTED. ALL BEARING TREES ARE PAINTED AND HAVE A B.T. TAG ATTACHED, FACING THE CORNER UNLESS OTHERWISE NOTED. ALL NEW BEARING TREES HAVE A PLASTIC WASHER (STAMPED "SURVEY MARKER DO NOT REMOVE") ATTACHED BY AN ALUMINUM NAIL TO THE SIDE CENTER OF THE TREE FOR DISTANCE MEASUREMENT, UNLESS OTHERWISE NOTED.

THIS RESTORATION WAS PERFORMED AT THE DIRECTION AND APPROVAL OF THE BENTON COUNTY SURVEYOR *Jam*

REGISTERED
PROFESSIONAL
LAND SURVEYOR

FIRM/AGENCY: BENTON COUNTY SURVEYOR'S OFFICE
 ADDRESS: 360 S.W. AVERY AVE., CORVALLIS, OR 97333; PH. 541-766-6821
 PRESENT: DAVID L. MALONE, P.L.S. AND BERNARD ALTENBACH, SURVEY TECH.
 EQUIPMENT: NIKON NIVO3.C WITH SURVEY PRO ONBOARD.

2/11/15 David L. Malone

OREGON
JANUARY 12, 1999
DAVID L. MALONE
51523

RENEWAL DATE: 12/31/16

3/28

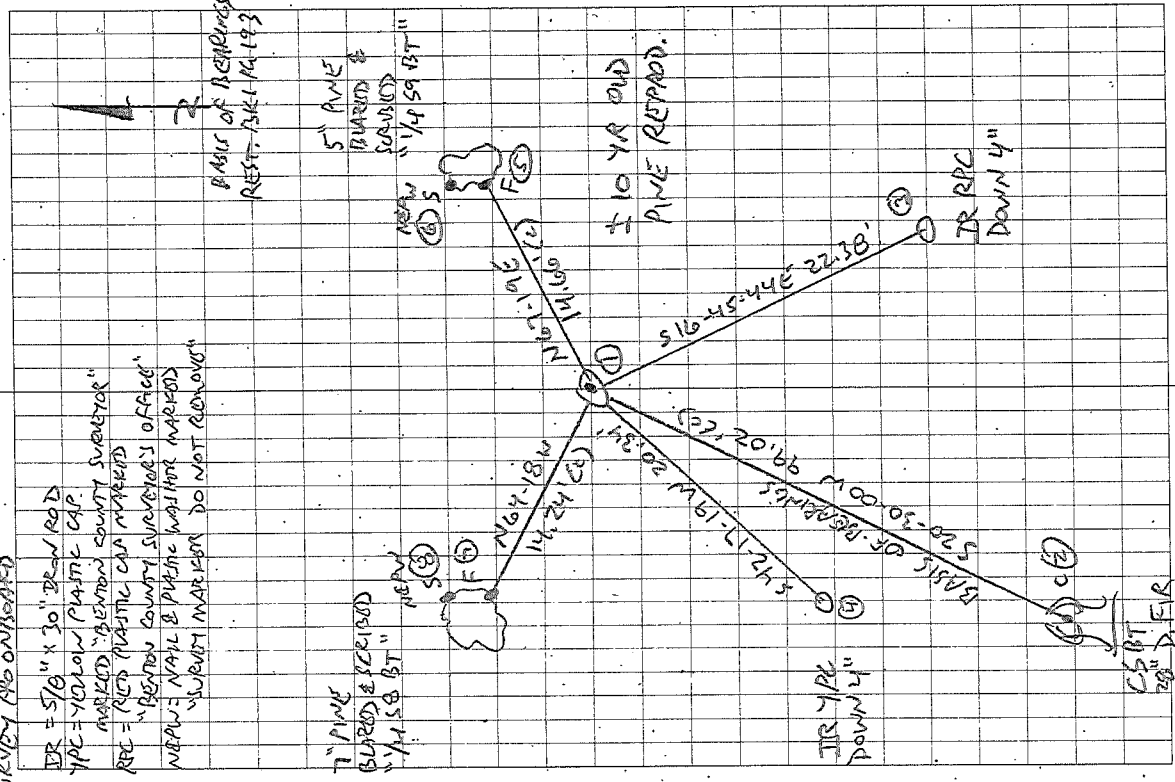
COOL, OVERCAST
 2/4/15
 D. MAIONE
 B. AUSTENBAUGH

NIKON MV03.C
 SURVEY PHOTOGRAPH

DR = 5/8" x 30" DEW ROD
 TYPE = YELLOW PLASTIC CAP
 MARKED "BENTON COUNTY SURVEYOR"
 REC = RED PLASTIC CAP MARKED
 "BENTON COUNTY SURVEYOR'S OFFICE"
 NEARBY NAIL & PLASTIC WOODER MARKED
 "SUBSTANTIAL DO NOT REMOVE"

7" PIPE
 BURIED & RECEIVED
 "1/4 58 BT"
 NEARBY
 "5"

BASES OF BEARINGS
 REST: 7/14/1913

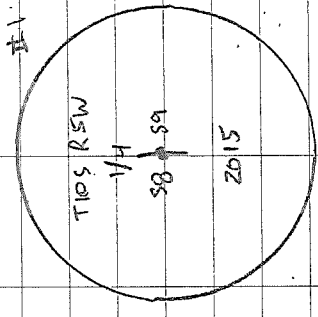


CSBT
 28" D. FIR
 ROTTEN STUMP
 OPENED TO U.S. "BT"

105300540

REMONUMENT T 10 S R 5 W 1/4 B 19

FD 1-1/4" IRON PIPE x 16" LONG, FIRMLY SET TOP FLARED,
 12" BELOW GROUND SURFACE. REMOVED 1-1/4" PIPE
 AND IN SAME HORIZONTAL POSITION SET A 2" x 3-1/4"
 G.I.P. W/ 3-1/4" BRASS DISK CEMENTED IN THE TOP,
 7" BELOW GROUND SURFACE, FD SW CSBT STUMP AND
 HELD FOR BASIS OF BEARINGS. FD POSSIBLY SE CSBT
 STUMP, ROTTEN AND UPROOTED, PARTIALLY SUBMERGED IN
 STREAM, FD POSSIBLE NW 6/8 BT, DOWN, ROTTEN, AND BURNT.
 NO VISIBLE MARKS OR APPARENT ROOT HOLES. SET
 2 NEW IRON ROD ACCESSORIES AND BURIED & SCRIBED
 2 NEW BEARING TREES. BURIED 1-1/4" PIPE HORIZONTALLY
 ON EAST SIDE OF BRASS DISK, SET 6" ORANGE CARBONITE
 "SURVEY MARKER" POST 1' EAST OF NEW MONUMENT.



3-1/4" BRASS DISK

C.S. 134 Cor. to Secs. 4, 5, 8 & 9 T. 10-5
 Oct. 27, 1930 1" Pipe 12" under surface
 County line survey Oak 18" in dia. N 1° 14' E. 7.88 chs. std.
 " 36" " " S 87° 50' E. 7.27 " "
 Ash 10" " " N 60° 36' W 5.535 chs.

1/4 Sec. Cor. bet. 8 & 9 T 10-5
 Set a 1 1/4" pipe 12" under surface
 Oak 20" S. 79° E 3.85 lying down
 " 18" N. 55° W. 1.83 chs. std.
 Fir 15" S. 20° 30' W. 1.499 "
 " 14" S 61° 30' E. 2.63 "
 Comb of House N. 6° 40' W.

1/4 Sec. Cor. bet. Secs. 5 & 8 T 10-5
 1/2" x 3" Steel spring Oak stake mld. C.S. #29 Oak stump checks
 Oak 6" in dia. N 40° W 5.20 lks.
 Laurel 3" " N 29° 20' E 93.5 links. found maple roots
School 116' v. s. gable N. 66° 02'
Super School Balfry N 76° 57' E

Corner to Secs. 5, 6, 7 & 8 T 10-5
 Set 1" Pipe
 Oak 14" N. 75° E. 1.34 chs. std.
 " 18" S. 53° 20' E 2.11 " "
 " 36" S 13° 05' W 3.60 " "
 " 36" N 75° W 1.65 " stump
 " 12" N 10° 10' W. 3.80 "

1/4 Sec. Cor. bet. Secs. 7 & 8 T 10-5
 Set a 1" Pipe
 Oak 15" S 59° W. 19 lks. std.
 Fir 24" N 42° W 3.7 "
 " 24" S 87 1/2° E 5.60 "
 " 10" S 66° E 84 " Print of tree

S.E. cor. of Henry Fuller D.L.C. 39 T 10-5
 L iron 1/8" thick oak stake in place mld. C.S. 29
 Oak 15" S 65° 30' W 72 lks. on slope std.
 " 36" N 78° W 73 " stump
 Fir 6" N 59° E 10.3 "
 " 19" N 35° 20' W 33.8 "
 Sec. line West 4.9 links.

1/4 Sec. Cor. bet. Secs. 6 & 7 T 10-5
 Set 1" Pipe
 Fir 13" N 59° E 24.7 links Needle N. 56° E.
 Oak 30" S. 21° E 93 " std.
 " 16" N 70° W 78 " stump down

Oct. 31, 1930



$\frac{1}{4}$ -Section corner between 8 and 9, Twp. 10-5

220 184

Reestablishment by W. C. Galloway

October 1930

Set a $1\frac{1}{4}$ " pipe 12" under surface

Oak 20" in diam bears S 79° E

3.85 chains (lying dn)

Oak 18" in diam bears N 55° W

1.83 chains (standing)

Fir 15" in diam bears S 20° 30' W

1.499 chains

Fir 14" in diam bears S 61° 30' E

2.63 chains

Comb of House bears N 6° 40' W

OREGON STATE UNIVERSITY
RESEARCH FORESTS CORNER CONDITION REPORT

Section 8 Township 10S Range 5W

County BENTON Date 4-30-93

CORNER DESIGNATION EAST 1/4 SECTION 8

8 / 9

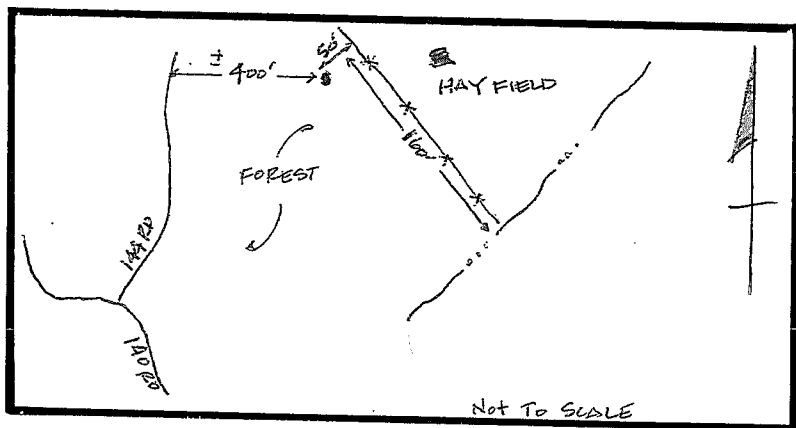
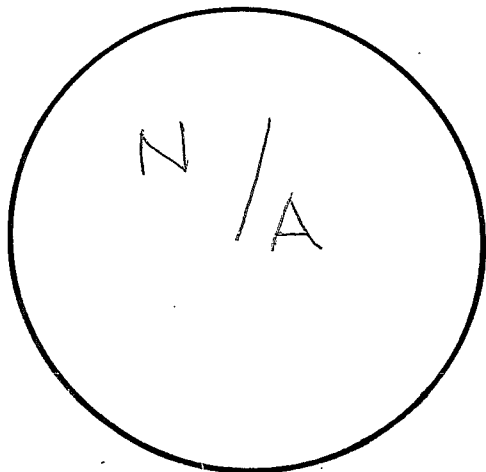
Previous Renewals/Surveys, etc. _____

Monument(s) & Accessories Found: (Condition and Source)

FOUND: 1 1/4" PIPE 1' UNDER GROUND SURFACE,
FOUND: 1 20" DOUGLAS FIR WITH CORNER LOCATION
POSTER, BT IS S 40° W, 4.0', FROM MONUMENT

Monument Detail

Sketch



MONUMENT AND ACCESSORY CONDITION

MONUMENT FOUND IN GOOD CONDITION
BEARING TREE FOUND IN GOOD CONDITION WITH
CORNER LOCATION POSTER INTACT

Location & Comments

Approach from Tampa Compass Declination 20°E

Road via 100 gate.

100 road to 140 road on

RIGHT. Follow 140 road to

144 road on right.

Follow 144 road \approx 1000'

Turn due EAST. FOLLOW

EAST AZ \approx 400' to CORNER

David B. Ryan