

105325565

CORNER FILE TRACKING

S:\Survey Corners\CORNERS\Templates\Filetrac2.doc
10/04/2010

CORNER NUMBER
105325565

STEP	HISTORY	RESTORATION
Form Prepared, DB	10/14/14	12/01/14
Field Inspection, DB	11/25/14	11/25/14
Finish index (count unit)	10/14/14	11/25/14
Counter Index	11/25/14	11/25/14
GIS Index Form	12/02/14	12/02/14
Checked, DB	12/04/14	12/04/14
Form Edited, DB	12/04/14	12/04/14
Form Signed, DB	12/04/14	12/04/14
Authorize Payment, DB	—	—
Archive Digital Files	12/04/14	12/04/14
Collect Documents	12/02/14	12/02/14
PDF File	12/08/14	12/08/14
Copy For Filming	12/05/14	12/05/14
Scanned (pdf to laserfiche)	12/08/14	12/08/14
Filmed (Archived), DB		
Filed, DB		

(DB) = Entry needed in database (Access).

COMMENTS:

DATE 10/14/2014

TOWNSHIP 10 SOUTH, RANGE 5 WEST, WILLAMETTE MERIDIAN; SECTION 9 CORNER COUNTY LINE
DONATION LAND CLAIM N/A CORNER N/A

COMMON CORNER(S):

NONE

RECORDS (INFORMATION IN BOLD ITALICS IS COUNTY STAFFS' INTERPRETATION OF THE RECORD)

BASED ON EXTENSIVE RESEARCH AND RECOVERY OF EVIDENCE, THIS OFFICE HAS DETERMINED THAT MOST GENERAL LAND OFFICE SURVEYORS IN BENTON COUNTY MEASURED TO THE FACE OF BEARING TREES.

[01] BENTON COUNTY SURVEY 10157 (OLD NO. 134) FIELD NOTES (FIELD BOOK 50, PAGE 15) BY W. C. GALLOWAY, C.S., DATED OCTOBER 27, 1930. ***SET 3/4" IRON ROD. OAK 34" DIA BEARS S68°30'E, 0.642 CHAINS (42.37 FEET); FIR 16" DIA BEARS S38°W, 0.260 CHAINS (17.16 FEET).***

[02] BENTON COUNTY SURVEY 10157 (OLD NO. 134) BY W. C. GALLOWAY, C.S., DATED OCTOBER 27, 1930. ALSO RECORDED AS POLK COUNTY SURVEY NO. 15402. ***3/4" ROD. OAK 34" DIA (CSBT) BEARS S68-1/2°E, 0.642 CHAINS (42.37 FEET); FIR 16" DIA (CSBT) BEARS S38°W, 0.26 CHAINS (17.16 FEET).***

FIRM/AGENCY: BENTON COUNTY SURVEYOR'S OFFICE

ADDRESS: 360 S.W. AVERY AVE., CORVALLIS, OR 97333; PH. 541-766-6821

RESEARCH BY: DAVID L. MALONE, P.L.S.

DATA ENTRY BY: SAME

BENTON COUNTY CORNER RESTORATION FORM, PAGE 1 OF 2, 105325565R1
SEE CORNER HISTORY FORM FOR RECORDS ETC.

CORNER RESTORATION FIELD BOOK NUMBER 30 PAGE(S) 17 DATE 11/25/2014
TOWNSHIP 10 SOUTH, RANGE 5 WEST, WILLAMETTE MERIDIAN; SECTION 9 CORNER COUNTY LINE
DONATION LAND CLAIM N/A CORNER N/A
CONDITION REPORT ; REFERENCED OUT ; RENEWED X; SURVEYED IN

LOCATION AND COMMENTS:

CORNER IS LOCATED IN A CLEAR CUT ON THE TOP OF A SMALL HILL. TO REACH CORNER FROM THE POLK/BENTON COUNTY LINE ON TAMPICO ROAD, GO SOUTH ABOUT 140 FEET TO THE OREGON STATE UNIVERSITY 000 GATE. FOLLOW THE 000 ROAD WEST-NORTHWEST ABOUT 2,350 FEET AND PARK. WALK APPROXIMATELY 365 FEET S10°W. CORNER IS GOOD FOR PREMARKING AND GPS CONTROL.

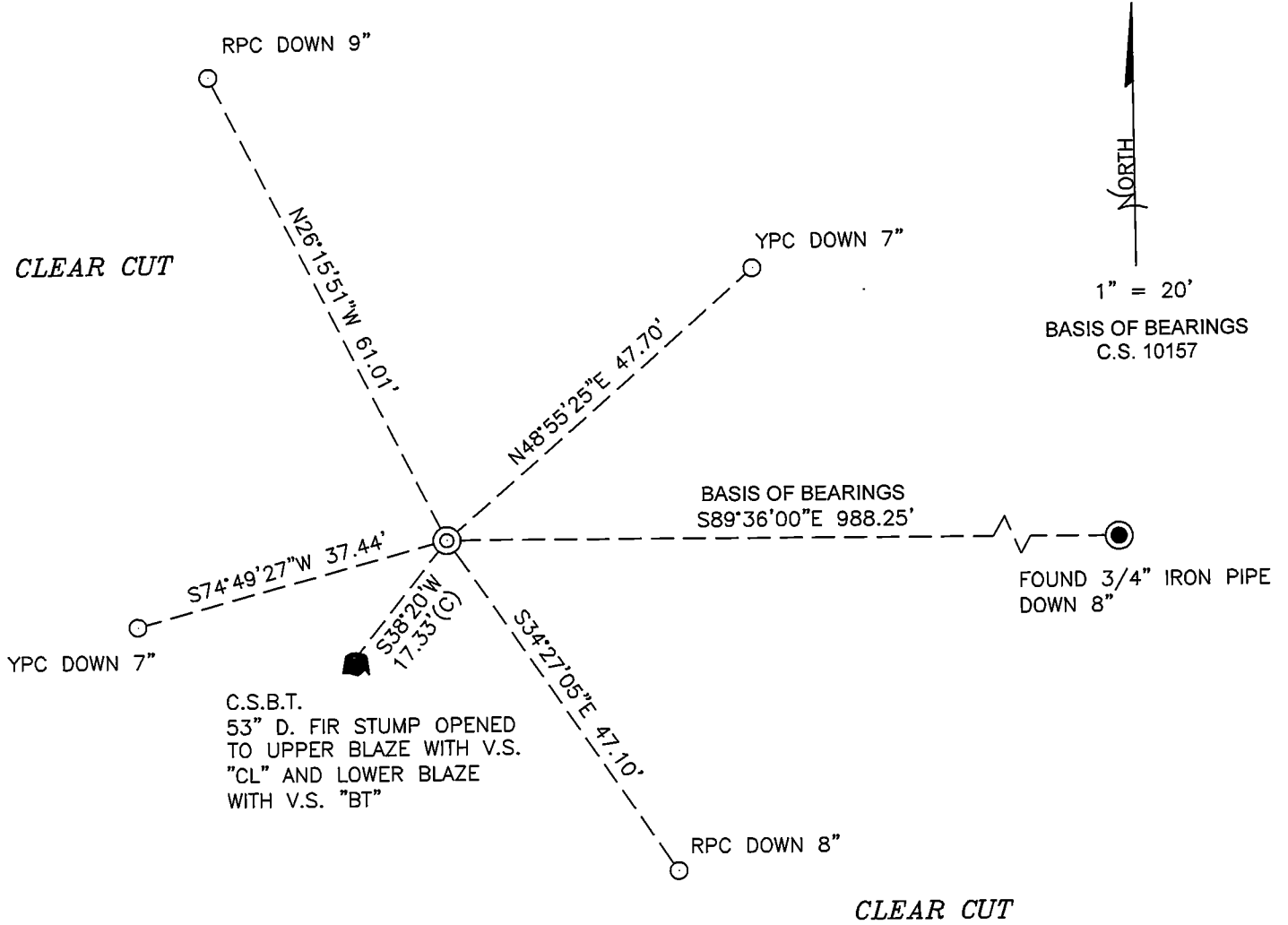
MONUMENTS AND ACCESSORIES FOUND (CONDITION AND SOURCE):

1. FOUND 3/4" IRON ROD, FIRMLY SET, UNDISTURBED AND FLUSH WITH GROUND SURFACE FOR THE CORNER.
(SET 3/4" IRON ROD AS PER RECORD [01]).
(3/4" ROD AS PER RECORD [02]).
2. FOUND D. FIR STUMP 53" DIA BEARS S38°20'W, 17.33 FEET TO CENTER. OPENED STUMP TO UPPER BLAZE WITH VISIBLE SCRIBING "CL" AND LOWER BLAZE WITH VISIBLE SCRIBING "BT".
(FIR 16" DIA BEARS S38°W, 0.260 CHAINS [17.16 FEET] AS PER RECORDS [01] AND [02]).
3. FOUND 3/4" IRON PIPE BEARS S89°36'00"E, 988.25 FEET, DOWN 8" BELOW GROUND SURFACE. BASIS OF BEARINGS FOR THIS RESTORATION.
(3/4" PIPE BEARS S89°36'E, 14.975 CHAINS [988.35 FEET] AS PER RECORD [02]).

MONUMENT SET (PROCEDURES AND DESCRIPTION):

FOUND 3/4" IRON ROD, FIRMLY SET, UNDISTURBED AND FLUSH WITH GROUND SURFACE FOR THE CORNER. W. C. GALLOWAY, C.S., SET THE 3/4" IRON ROD TO MARK THE COUNTY LINE IN 1930. I FOUND THE SOUTHWEST COUNTY SURVEYOR'S BEARING TREE, A STUMP WHICH I OPENED TO VISIBLE SCRIBING, AND A ROOT WAD DEPRESSION AT THE APPROXIMATE LOCATION OF THE SOUTHEAST COUNTY SURVEYOR'S BEARING TREE, WHICH AGREE WELL WITH THE 3/4" IRON ROD. I HELD THE 3/4" IRON ROD AS FOUND TO MARK THE COUNTY LINE PER W. C. GALLOWAY'S COUNTY LINE SURVEY, C.S. 10157.

I DROVE THE 3/4" IRON ROD DOWN SEVERAL INCHES AND OVER IT IN THE SAME HORIZONTAL POSITION I SET A 2" X 31-1/2" GALVANIZED IRON PIPE WITH A 3-1/4" BRASS DISK CEMENTED IN THE TOP, FLUSH WITH GROUND SURFACE AND MARKED AS SHOWN ON PAGE 2 OF 2. SET FOUR NEW IRON ROD ACCESSORIES AS SHOWN ON PAGE 2 OF 2. SET A 6 FOOT ORANGE CARSONITE "SURVEY MARKER" POST 1 FOOT WEST OF NEW MONUMENT.



MONUMENT DETAIL



3-1/4" BRASS DISK

LEGEND

- SET 5/8" X 30" REBAR WITH PLASTIC CAP
- YPC YELLOW PLASTIC CAP MARKED "BENTON COUNTY SURVEYOR"
- RPC RED PLASTIC CAP MARKED "BENTON COUNTY SURVEYOR'S OFFICE"
- (C) MEASUREMENT TO CENTER
- ⊙ GOVERNMENT MONUMENT SET AS SHOWN
- GOVERNMENT MONUMENT FOUND AS SHOWN
- V.S. VISIBLE SCRIBING
- C.S. COUNTY SURVEY
- C.S.B.T. COUNTY SURVEYOR'S BEARING TREE
- BEARING TREE STUMP AS NOTED

NEW ACCESSORIES:

1. SET REBAR (SEE LEGEND) N48°55'25"E, 47.70 FEET AND 7 INCHES BELOW GROUND LEVEL.
2. SET REBAR (SEE LEGEND) S34°27'05"E, 47.10 FEET AND 8 INCHES BELOW GROUND LEVEL.
3. SET REBAR (SEE LEGEND) S74°49'27"W, 37.44 FEET AND 7 INCHES BELOW GROUND LEVEL.
4. SET REBAR (SEE LEGEND) N26°15'51"W, 61.01 FEET AND 9 INCHES BELOW GROUND LEVEL.

NOTES:

COMPASS DECLINATION IS 16° EAST. ALL MEASURED DISTANCES AND BEARINGS ARE TO THE CENTER OF THE OBJECT, UNLESS OTHERWISE NOTED.

THIS RESTORATION WAS PERFORMED AT THE DIRECTION AND APPROVAL OF THE BENTON COUNTY SURVEYOR *Jan*

FIRM/AGENCY: BENTON COUNTY SURVEYOR'S OFFICE
 ADDRESS: 360 S.W. AVERY AVE., CORVALLIS, OR 97333; PH. 541-766-6821
 PRESENT: DAVID L. MALONE, P.L.S. AND BERNARD ALTENBACH, SURVEY TECH.
 EQUIPMENT: NIKON NIVO3.C WITH SURVEY PRO ONBOARD.

REGISTERED
 PROFESSIONAL
 LAND SURVEYOR

12/04/14 *David L. Malone*

OREGON
 JANUARY 12, 1999
 DAVID L. MALONE
 51523

RENEWAL DATE: 12/31/14

30/17

11/28/14
D. MALONE
B. ALTEMBACH

COOL, CLOUDY

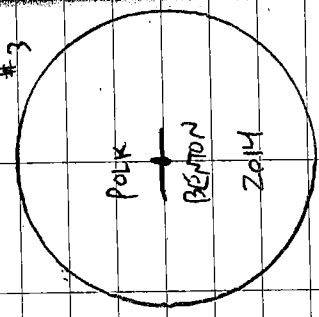
MKON MVO31C
SURVEY ROD OBTAINED

REMONUMENT TIOS RSW COUNTY LINE

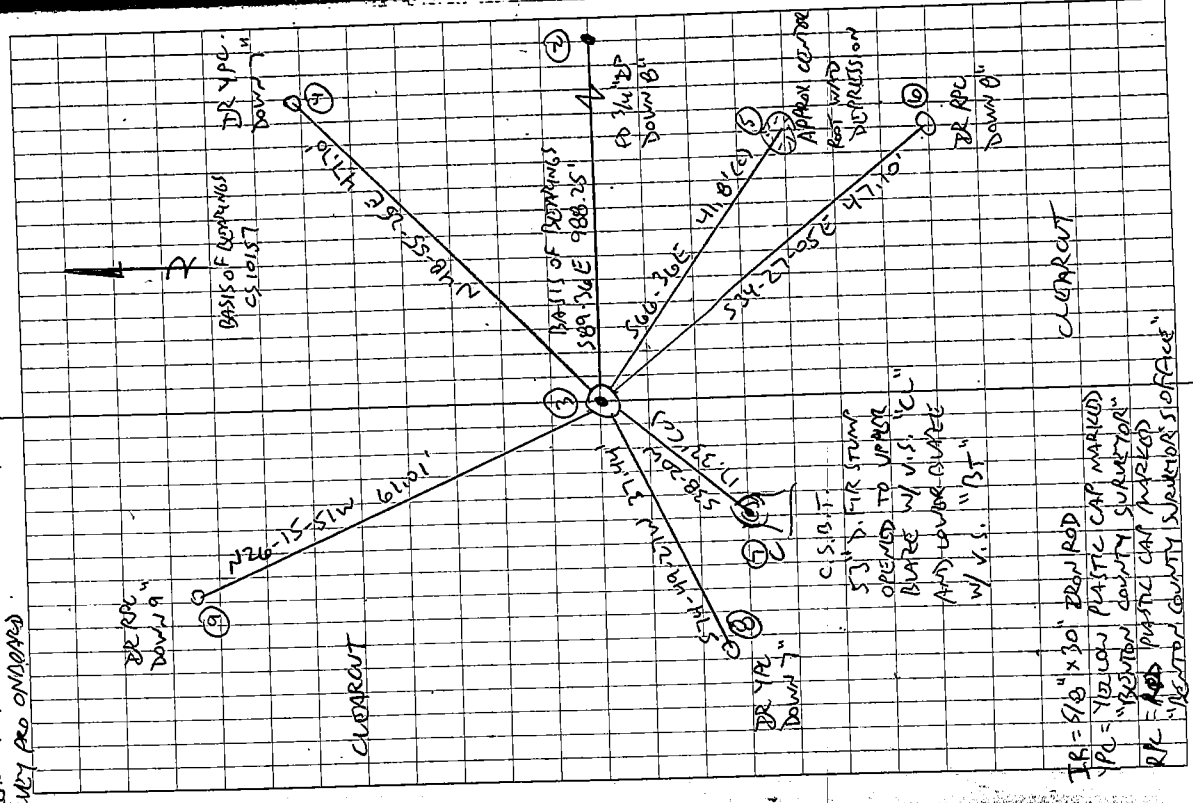
105325565

FO 3/4" IRON ROD, FIRMLY SET, UNDISTURBED,
FINISH W/ GROUND SURFACE. DROVE DEAN ROD
DOWN SEVERAL INCHES AND OVER IT IN THE
SAME HORIZONTAL POSITION SET A 2" x 3/16" G.I.P. W/ 3-1/4" BRASS DISK COMMENTED IN THE
TOP. FO 53" D. FIR STUMP, SW CS BT. OPENED
TO UPPER BARE W/ V.S. "CL" & LOWER BARE
W/ V.S. "BT". FO FOOT WAD. DEPRESSION OF SE CS BT.
SET 4 NEW IRON ROD ACCESSORIES. SET 6' GRAVISE
CARBONITE "SURVEY MARKER" POST 1' WEST OF NEW
MONUMENT.

#3



3-1/4" BRASS DISK



CLEARCUT

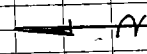
IR = 5/8" x 30" DEAN ROD
PC = 1/2" LOW PLASTIC CAP MARKED
"BENTON COUNTY SURVEYOR"
RLC = 1/2" PLASTIC CAP MARKED
"BENTON COUNTY SURVEYOR'S OFFICE"

C.S.I.D. T.
53" D. FIR STUMP
OPENED TO UPPER
BARE W/ V.S. "CL"
AND LOWER BARE
W/ V.S. "BT"

BASIS OF DEPT. 1065
CS 10157
DR 1/2"
DOWN 1/4"

BASIS OF DEPT. 1065
S89.36 E 988.25"
FO 3/4" IRON
DOWN 1/4"

APPROX. CENTER
FOOT WAD
DEPRESSION



107.35
S 61.10 W
61.10'

107.35
S 61.10 W
61.10'

100.36 E
S 54.27 W 205.2'
47.710'

C.S.I.D. T.
53" D. FIR STUMP
OPENED TO UPPER
BARE W/ V.S. "CL"
AND LOWER BARE
W/ V.S. "BT"

DR 1/2"
DOWN 7"

CLEARCUT

DR 1/2"
DOWN 9"

DR 1/2"
DOWN 1/4"

107.35
S 61.10 W
61.10'

107.35
S 61.10 W
61.10'

100.36 E
S 54.27 W 205.2'
47.710'

DR 1/2"
DOWN 1/4"

CLEARCUT