

105334565

CORNER FILE TRACKING

S:\Survey Corners\CORNERS\Templates\Filetrac2.doc

10/04/2010

CORNER NUMBER
105334565

STEP	HISTORY	RESTORATION
Form Prepared, DB	10/14/14	12/02/14
Field Inspection, DB	11/25/14	11/25/14
Finish index (count unit)	10/14/14	11/25/14
Counter Index	11/25/14	11/25/14
GIS Index Form	12/02/14	12/02/14
Checked, DB	12/04/14	12/04/14
Form Edited, DB	12/04/14	12/04/14
Form Signed, DB	12/04/14	12/04/14
Authorize Payment, DB	—	—
Archive Digital Files	12/04/14	12/04/14
Collect Documents	12/02/14	12/02/14
PDF File	12/08/14	12/08/14
Copy For Filming	12/05/14	12/05/14
Scanned (pdf to laserfiche)	12/08/14	12/08/14
Filmed (Archived), DB		
Filed, DB		

(DB) = Entry needed in database (Access).

COMMENTS:

DATE 10/14/2014

TOWNSHIP 10 SOUTH, RANGE 5 WEST, WILLAMETTE MERIDIAN; SECTION 9 CORNER COUNTY LINE
DONATION LAND CLAIM N/A CORNER N/A

COMMON CORNER(S):

NONE

RECORDS (INFORMATION IN BOLD ITALICS IS COUNTY STAFFS' INTERPRETATION OF THE RECORD)

BASED ON EXTENSIVE RESEARCH AND RECOVERY OF EVIDENCE, THIS OFFICE HAS DETERMINED THAT MOST GENERAL LAND OFFICE SURVEYORS IN BENTON COUNTY MEASURED TO THE FACE OF BEARING TREES.

[01] BENTON COUNTY SURVEY 10157 (OLD NO. 134) FIELD NOTES (FIELD BOOK 50, PAGE 14) BY W. C. GALLOWAY, C.S., DATED OCTOBER 27, 1930. SET ***3/4" GALVANIZED PIPE. OAK 9" DIA BEARS S15°E, 0.025 CHAINS (1.65 FEET); FIR 16" DIA BEARS EAST, 0.325 CHAINS (21.45 FEET).***

[02] BENTON COUNTY SURVEY 10157 (OLD NO. 134) BY W. C. GALLOWAY, C.S., DATED OCTOBER 27, 1930. ALSO RECORDED AS POLK COUNTY SURVEY NO. 15402. ***3/4" PIPE ON COUNTY LINE, NOT ON PROPERTY LINE. OAK 9" DIA (CSBT) BEARS S15°E, 0.025 CHAINS (1.65 FEET); FIR 16" DIA (CSBT) BEARS EAST, 0.325 CHAINS (21.45 FEET).***

FIRM/AGENCY: BENTON COUNTY SURVEYOR'S OFFICE
ADDRESS: 360 S.W. AVERY AVE., CORVALLIS, OR 97333; PH. 541-766-6821
RESEARCH BY: DAVID L. MALONE, P.L.S.
DATA ENTRY BY: SAME

BENTON COUNTY CORNER RESTORATION FORM, PAGE 1 OF 2, 105334565R1
SEE CORNER HISTORY FORM FOR RECORDS ETC.

CORNER RESTORATION FIELD BOOK NUMBER 30 PAGE(S) 19 DATE 11/25/2014
TOWNSHIP 10 SOUTH, RANGE 5 WEST, WILLAMETTE MERIDIAN; SECTION 9 CORNER COUNTY LINE
DONATION LAND CLAIM N/A CORNER N/A
CONDITION REPORT _____; REFERENCED OUT _____; RENEWED X; SURVEYED IN _____

LOCATION AND COMMENTS:

CORNER IS LOCATED IN A CLEAR CUT ON THE TOP OF A SMALL HILL. TO REACH CORNER FROM THE POLK/BENTON COUNTY LINE ON TAMPICO ROAD, GO SOUTH ABOUT 140 FEET TO THE OREGON STATE UNIVERSITY 000 GATE. FOLLOW THE 000 ROAD WEST-NORTHWEST ABOUT 1,640 FEET AND PARK. WALK APPROXIMATELY 200 FEET S52°W. CORNER IS GOOD FOR PREMARKING AND GPS CONTROL.

MONUMENTS AND ACCESSORIES FOUND (CONDITION AND SOURCE):

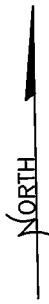
1. FOUND 3-1/4" BRASS DISK BEARS N89°36'00"W, 586.28 FEET, AS PER BENTON COUNTY CORNER RESTORATION 105325565. BASIS OF BEARINGS FOR THIS RESTORATION. (3/4" ROD BEARS N89°36'W, 8.884 CHAINS [586.34 FEET] AS PER RECORD [02]).
2. FOUND 3-1/4" BRASS DISK BEARS S89°36'00"E, 401.97 FEET, AS PER BENTON COUNTY CORNER RESTORATION 105340565. (3/4" PIPE BEARS S89°36'E, 6.091 CHAINS [402.01 FEET] AS PER RECORD [02]).

MONUMENT SET (PROCEDURES AND DESCRIPTION):

W. C. GALLOWAY, C.S., SURVEYED THE COUNTY LINE IN 1930, SETTING MONUMENTS AT VARIOUS POINTS AS PER C.S. 10157. THE ONLY REMAINING ORIGINAL EVIDENCE OF THIS COUNTY LINE MONUMENT IS SOME D. FIR ROOT WAD REMAINS AT THE APPROXIMATE POSITION OF THE EAST COUNTY SURVEYOR'S BEARING TREE. THERE WAS NOT ENOUGH REMAINS LEFT TO GIVE A DEFINITE POSITION OF THE BEARING TREE, AND THUS I COULD NOT RESTORE THE COUNTY LINE MONUMENT FROM THOSE REMAINS. THE COUNTY LINE MONUMENTS TO THE EAST AND WEST FIT THE RECORD VERY WELL. I DECIDED TO PROPORTION THE POSITION OF THIS COUNTY LINE MONUMENT FROM THOSE MONUMENTS TO THE EAST AND WEST.

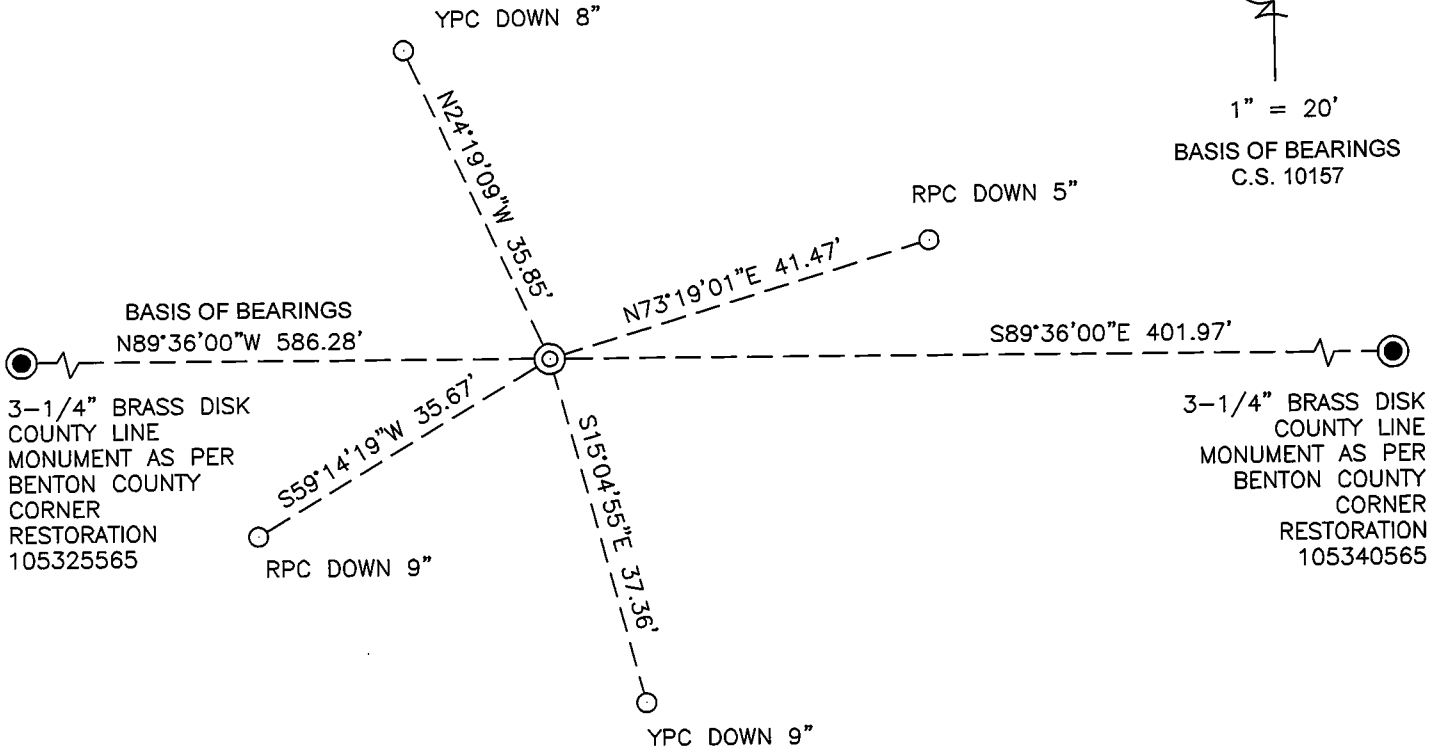
AT THE PROPORTIONED POSITION I SET A 2" X 31-1/2" GALVANIZED IRON PIPE WITH A 3-1/4" BRASS DISK CEMENTED IN THE TOP, FLUSH WITH GROUND SURFACE AND MARKED AS SHOWN ON PAGE 2 OF 2. SET FOUR NEW IRON ROD ACCESSORIES AS SHOWN ON PAGE 2 OF 2. SET A 6 FOOT ORANGE CARSONITE "SURVEY MARKER" POST 1 FOOT WEST OF NEW MONUMENT.

CLEAR CUT



1" = 20'

BASIS OF BEARINGS
C.S. 10157



BASIS OF BEARINGS
N89°36'00\"/>

3-1/4\"/>

3-1/4\"/>

CLEAR CUT

MONUMENT DETAIL

LEGEND



- SET 5/8" X 30" REBAR WITH PLASTIC CAP
- YPC YELLOW PLASTIC CAP MARKED "BENTON COUNTY SURVEYOR"
- RPC RED PLASTIC CAP MARKED "BENTON COUNTY SURVEYOR'S OFFICE"
- ⊙ GOVERNMENT MONUMENT SET AS SHOWN
- GOVERNMENT MONUMENT FOUND AS SHOWN
- C.S. COUNTY SURVEY

3-1/4" BRASS DISK

NEW ACCESSORIES:

1. SET REBAR (SEE LEGEND) N73°19'01"E, 41.47 FEET AND 5 INCHES BELOW GROUND LEVEL.
2. SET REBAR (SEE LEGEND) S15°04'55"E, 37.36 FEET AND 9 INCHES BELOW GROUND LEVEL.
3. SET REBAR (SEE LEGEND) S59°14'19"W, 35.67 FEET AND 9 INCHES BELOW GROUND LEVEL.
4. SET REBAR (SEE LEGEND) N24°19'09"W, 35.85 FEET AND 8 INCHES BELOW GROUND LEVEL.

NOTES:

COMPASS DECLINATION IS 16° EAST. ALL MEASURED DISTANCES AND BEARINGS ARE TO THE CENTER OF THE OBJECT, UNLESS OTHERWISE NOTED.

THIS RESTORATION WAS PERFORMED AT THE DIRECTION AND APPROVAL OF THE BENTON COUNTY SURVEYOR *[Signature]*

REGISTERED
PROFESSIONAL
LAND SURVEYOR

FIRM/AGENCY: BENTON COUNTY SURVEYOR'S OFFICE
 ADDRESS: 360 S.W. AVERY AVE., CORVALLIS, OR 97333; PH. 541-766-6821
 PRESENT: DAVID L. MALONE, P.L.S. AND BERNARD ALTENBACH, SURVEY TECH.
 EQUIPMENT: NIKON NIVO3.C WITH SURVEY PRO ONBOARD.

12/04/14 David L. Malone

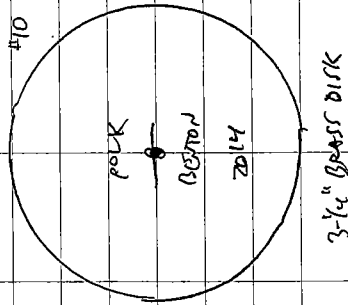
OREGON
JANUARY 12, 1999
DAVID L. MALONE
51523

RENEWAL DATE: 12/31/14

105334565

REMONUMENT THIS RSW COUNTY LINE

THE ONLY ORIGINAL EVIDENCE OF THIS CORNER WAS SOME POST WAS REMAINS OF A D. FIR AT THE APPROXIMATE POSITION OF THE SE CORNER, THESE REMAINS WERE NOT ENOUGH TO POSITION THE MONUMENT, SO I PROPORTIONED THE MONUMENT FROM THE COUNTY LINE MONUMENTS TO THE EAST & WEST. SET A 2" x 3 1/2" G.I.P. W/ 3-1/4" BRASS DISK CEMENTED IN THE TOP, FLUSH WITH GROUND SURFACE. SET 4 NEW BRONZE ROD ACCESSORIES, SET 6" ORANGE CARBONITE "SURVEY MARKER" POST 1' ~~SOUTH~~ WEST OF NEW MONUMENT.

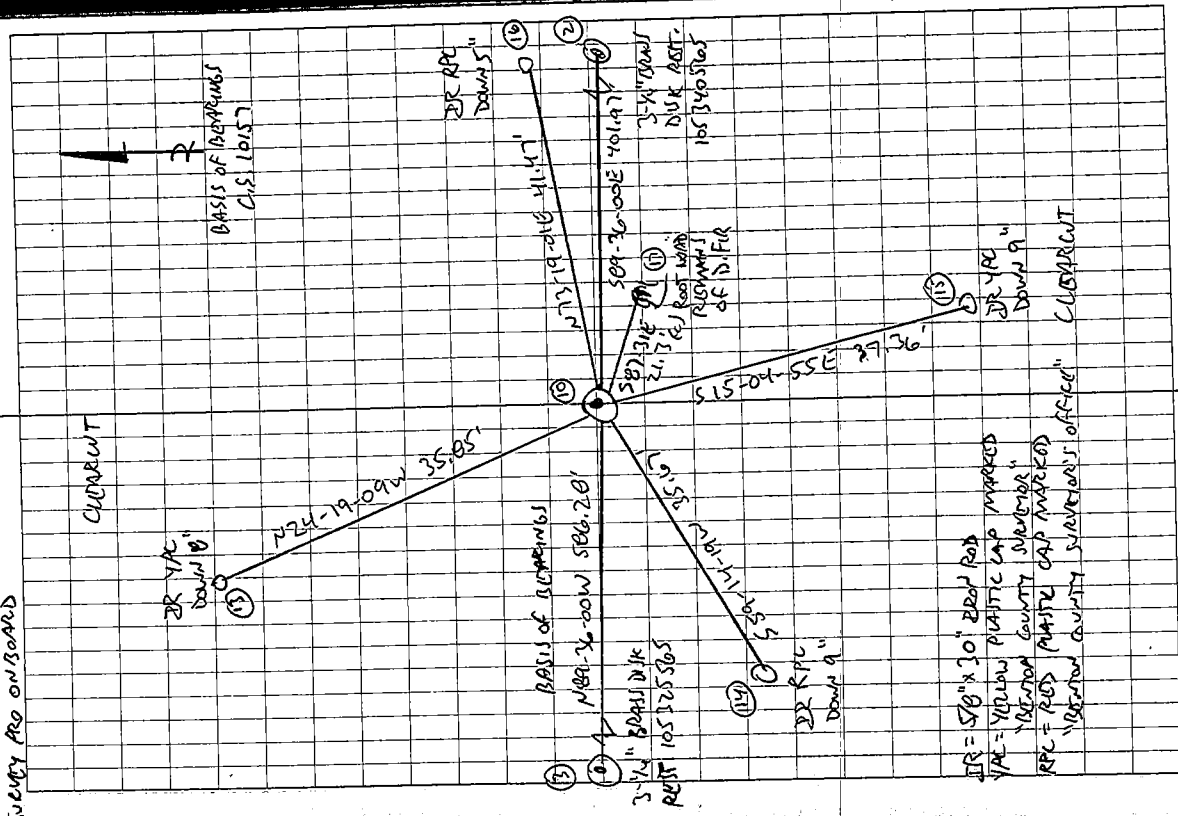


39/19

11/25/14
D. MATHIAS
B. ANTONIOBARI

COOL, CLOUDY

NIKON N103.0
SUNNY PRO ONBOARD



DR = 5/8" x 10" BRONZE ROD
 YR = YELLOW PLASTIC CAP MARKED
 "VICTORIA COUNTY SUBURBER"
 RPC = RED PLASTIC CAP MARKED
 "VICTORIA COUNTY SUBURBER'S OFFICE"
 CURB CUT