

105340300

CORNER FILE TRACKING

S:\Survey Corners\CORNERS\Templates\Filetrac2.doc
10/04/2010

CORNER NUMBER
105340300

STEP	HISTORY	RESTORATION
Form Prepared, DB	3/27/13	3/28/17
Field Inspection, DB	1/30/17	1/30/17
Finish index (count unit)	3/27/13	1/30/17
Counter Index	1/31/17	1/31/17
GIS Index Form	1/31/17	1/31/17
Checked, DB	3/29/17	3/29/17
Form Edited, DB	3/29/17	3/29/17
Form Signed, DB	3/29/17	3/29/17
Authorize Payment, DB	—	—
Archive Digital Files	3/29/17	3/29/17
Collect Documents	3/29/17	3/29/17
PDF File	3/29/17	3/29/17
Copy For Filming	3/29/17	3/29/17
Scanned (pdf to laserfiche)	3/29/17	3/29/17
Filmed (Archived), DB		
Filed, DB		

(DB) = Entry needed in database (Access).

COMMENTS:

DATE 03/27/2013TOWNSHIP 10 SOUTH, RANGE 5 WEST, WILLAMETTE MERIDIAN; SECTION 21 CORNER SOUTH 1/4
DONATION LAND CLAIM NONE CORNER NONE**COMMON CORNER(S):**

NORTH 1/4 SECTION 28

RECORDS (INFORMATION IN BOLD ITALICS IS COUNTY STAFFS' INTERPRETATION OF THE RECORD)

BASED ON EXTENSIVE RESEARCH AND RECOVERY OF EVIDENCE, THIS OFFICE HAS DETERMINED THAT MOST GENERAL LAND OFFICE SURVEYORS IN BENTON COUNTY MEASURED TO THE FACE OF BEARING TREES.

- [01] GENERAL LAND OFFICE (GLO BT) NOTES BY GEORGE MERGER, D.S., DATED MAY 13, 1882. SET POST 3 FEET LONG AND 3 INCHES SQUARE MARKED "***1/4S***" ON NORTH SIDE AND STONE 12 INCHES IN GROUND FOR 1/4 SECTION CORNER FROM WHICH A FIR 10" DIA BEARS N10°W, 28 LINKS (18.48 FEET) MARKED "***1/4S BT***"; A FIR 8" DIA BEARS S65°E, 10 LINKS (6.60 FEET) MARKED "***1/4S BT***".
- [02] BENTON COUNTY SURVEY NO. 1291 (OLD NO. 337) FIELD NOTES (FIELD BOOK 58, PAGE 14) BY W.C. GALLOWAY, C.S., DATED SEPTEMBER 4, 1936. SET A FORD AXLE. A FIR 10" DIA BEARS NORTH, 0.08 CHAINS (5.28 FEET) STANDING; A FIR 8" DIA (GLO BT) BEARS S72°E, 0.10 CHAINS (6.60 FEET) STANDING DEAD. MARKED FIR 20" DIA BEARS N65°40'E, 0.263 CHAINS (17.36 FEET).
- [03] BENTON COUNTY CORNER RESTORATION BOOK NO. 1, PAGE 230, BY W.C. GALLOWAY, C.S., DATED SEPTEMBER, 1936. SET A FORD AXLE FOR CORNER FROM WHICH A FIR 10" DIA BEARS NORTH, 0.080 CHAINS (5.28 FEET) STANDING; A FIR 8" DIA (GLO BT) BEARS S72°E, 0.100 CHAINS (6.60 FEET) STANDING DEAD; MARKED FIR 20" DIA (CSBT) BEARS N65°40'E, 0.263 CHAINS (17.36 FEET).
- [04] BENTON COUNTY CORNER RESTORATION NO. 222. TRANSCRIBED FROM RECORD [03] AND MAY CONTAIN ERRORS AND/OR OMISSIONS.
- [05] BENTON COUNTY MAP NO. 10-5-00007 BY W.C. GALLOWAY, C.S., DATED DECEMBER 22, 1936. FORD AXLE. FIR 10" DIA BEARS NORTH, 0.08 CHAINS (5.28 FEET) STANDING; FIR 8" DIA (GLO BT) BEARS S72°E, 0.10 CHAINS (6.60 FEET) DEAD; FIR 20" DIA (CSBT) BEARS N65°40'E, 0.263 CHAINS (17.36 FEET).
- [06] BENTON COUNTY SURVEY NO. 436 BY W.C. GALLOWAY, C.S., DATED DECEMBER 22, 1936. FORD AXLE. FIR 10" DIA BEARS NORTH, 0.08 CHAINS (5.28 FEET); FIR 8" DIA (GLO BT) BEARS S72°E, 0.10 CHAINS (6.60 FEET) DEAD; FIR 20" DIA (CSBT) BEARS N65°40'E, 0.263 CHAINS (17.36 FEET).
- [07] BENTON COUNTY SURVEY NO. 1528 (OLD NO. 337) FIELD NOTES (FIELD BOOK 58, PAGE 67) BY BURT WILKES, D.C.S., DATED JUNE 27, 1941. FORD AXLE.
- [08] STARKER FORESTS CORNER NOTES BY S.H. WILLIAMS AND J.D. STALEY DATED MARCH 21, 1973. 1-1/2" I.P. 1 FOOT ABOVE GROUND. WHITE POST.
- [09] BENTON COUNTY SURVEY NO. 9936 BY JIM S. PETERSON, P.L.S., DATED JANUARY 5, 1999. FOUND 1" AXLE 30' NORTH OF OLD DIRT ROAD. FOUND ROTTED FIR STUB 30" DIA BEARS NORTH, 8 LINKS (5.28 FEET) SCRIBING VISIBLE; ROTTED FIR STUB 20" DIA (CSBT) BEARS N65°40'E, 0.263 CHAINS (17.36 FEET) SCRIBING VISIBLE; FIR STUB 14" DIA (GLO BT) BEARS S72°E, 10 LINKS (6.60 FEET) NO MARKS VISIBLE. W. FIR 14" DIA BEARS S84°E, 11.8 FEET MARKED "1/4 S28 BT"; FIR 16" DIA BEARS N6°E, 25.2 FEET MARKED "1/4 S21 BT".

FIRM/AGENCY: BENTON COUNTY SURVEYOR'S OFFICE**ADDRESS:** 360 S.W. AVERY AVE. CORVALLIS OR 97333; PH. 766-6821**RESEARCH BY:** DAVID L. MALONE, P.L.S.**DATA ENTRY BY:** SAME

**BENTON COUNTY CORNER RESTORATION FORM, PAGE 1 OF 2, 105340300R2
SEE CORNER HISTORY FORM FOR RECORDS ETC.**

CORNER RESTORATION FIELD BOOK NUMBER 31 PAGE(S) 27

DATE 01/30/2017

TOWNSHIP 10 SOUTH, RANGE 5 WEST, WILLAMETTE MERIDIAN; SECTION 21 CORNER SOUTH 1/4

DONATION LAND CLAIM N/A CORNER N/A

CONDITION REPORT ; REFERENCED OUT ; RENEWED X; SURVEYED IN

LOCATION AND COMMENTS:

CORNER IS LOCATED ON A RIDGE LINE ABOUT 20 FEET NORTHERLY OF AN OLD DIRT SKID ROAD, AND ABOUT 70 FEET NORTHEAST OF A STARKER FORESTS GATE, IN AN AREA OF MIXED FIRS AND HARDWOODS. TO REACH CORNER FROM INTERSECTION OF SOAP CREEK ROAD AND WRITSMAN CREEK DRIVE, DRIVE DOWN WRITSMAN CREEK DRIVE FOR 0.68 MILES PAST OTHER ROADS TO A STARKER FORESTS GATE, CONTINUE FOR 0.04 MILES TO A WYE, STAY RIGHT FOR 0.17 MILES TO A WYE, STAY LEFT FOR 0.19 MILES TO A WYE, STAY RIGHT FOR 0.05 MILES TO A WYE, STAY LEFT FOR 0.09 MILES TO A WYE, TURN RIGHT FOR 0.45 MILES TO A WYE, STAY LEFT FOR 0.27 MILES TO A WYE, STAY RIGHT FOR 0.70 MILES TO A STARKER FORESTS GATE AT THE END OF THE ROAD AND PARK. WALK NORTHEAST ABOUT 70 FEET. CORNER IS BAD FOR PREMARKING AND GPS CONTROL.

MONUMENTS AND ACCESSORIES FOUND (CONDITION AND SOURCE):

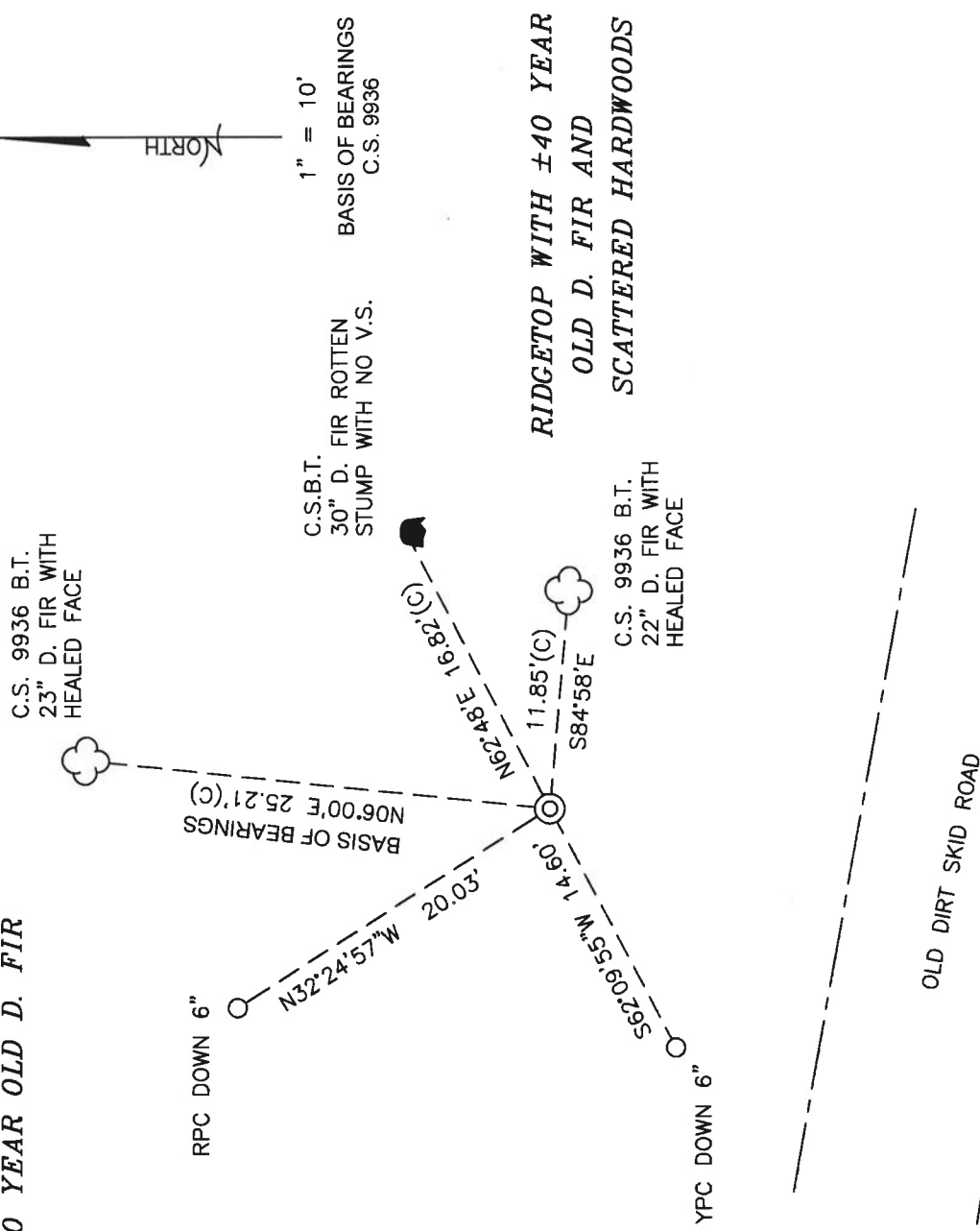
1. FOUND 31" LONG AXLE WITH 3-1/2" GEAR ON TOP, FIRMLY SET, UP 3" ABOVE GROUND SURFACE FOR THE CORNER. (SET POST 3 FEET LONG AND 3 INCHES SQUARE MARKED "1/4S" ON NORTH SIDE AND STONE 12 INCHES IN GROUND PER RECORD [01]).
(SET A FORD AXLE PER RECORDS [02] AND [03]).
(FORD AXLE PER RECORDS [05] - [07]).
(1-1/2" IRON PIPE 1 FOOT ABOVE GROUND PER RECORD [08]).
(FOUND 1" AXLE PER RECORD [09]).
2. FOUND D. FIR 23" DIA WITH HEALED FACE BEARS N6°00'E, 25.21 FEET TO CENTER. **BASIS OF BEARINGS FOR THIS RESTORATION.** SET ALUMINUM NAIL AND PLASTIC WASHER IN EASTERLY BASE FOR DISTANCE MEASUREMENT. (FIR 16" DIA BEARS N6°E, 25.2 FEET MARKED "1/4 S21 BT" PER RECORD [09]).
3. FOUND D. FIR 22" DIA WITH HEALED FACE BEARS S84°58'E, 11.85 FEET TO CENTER. SET ALUMINUM NAIL AND PLASTIC WASHER IN NORTHERLY BASE FOR DISTANCE MEASUREMENT. (W. FIR 14" DIA BEARS S84°E, 11.8 FEET MARKED "1/4 S28 BT" PER RECORD [09]).
4. FOUND ROTTEN D. FIR STUMP 30" DIA WITH NO VISIBLE MARKS BEARS N62°48'E, 16.82 FEET TO CENTER. (MARKED FIR 20" DIA BEARS N65°40'E, 0.263 CHAINS [17.36 FEET] PER RECORDS [02] AND [03]). (FIR 20" DIA BEARS N65°40'E, 0.263 CHAINS [17.36 FEET] PER RECORDS [05] AND [06]). (ROTTED FIR STUB 20" DIA BEARS N65°40'E, 0.263 CHAINS [17.36 FEET] SCRIBING VISIBLE PER RECORD [09]).

MONUMENT SET (PROCEDURES AND DESCRIPTION):

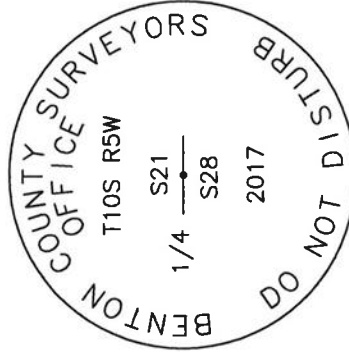
FOUND 31" LONG AXLE WITH 3-1/2" GEAR ON TOP, FIRMLY SET, UP 3" ABOVE GROUND SURFACE FOR THE CORNER. AXLE WAS SET BY W. C. GALLOWAY, C.S., IN 1936 FROM AN ORIGINAL GENERAL LAND OFFICE (GLO) BEARING TREE. FOUND A ROTTEN COUNTY SURVEYOR BEARING TREE STUMP AND VERY ROTTEN FIR REMAINS AT THE COMPASS AND TAPE LOCATION OF THE TWO GLO BEARING TREES. HELD THE AXLE AS THE PERPETUATION OF THE ORIGINAL CORNER.

REMOVED AXLE FROM AREA AND IN THE SAME HORIZONTAL POSITION SET 2" X 31-1/2" GALVANIZED IRON PIPE WITH 3-1/4" BRASS DISK CEMENTED IN THE TOP, 5" ABOVE GROUND SURFACE, SURROUNDED BY STONES, AND MARKED AS SHOWN ON PAGE 2 OF 2. SET 2 NEW IRON ROD ACCESSORIES AS SHOWN ON PAGE 2 OF 2. SET 6 FOOT ORANGE CARSONITE "SURVEY MARKER" POST 1 FOOT WEST OF BRASS DISK. SET FOUND WHITE FIBERGLASS POST 1 FOOT NORTH OF BRASS DISK.

±40 YEAR OLD D. FIR



MONUMENT DETAIL



3-1/4" BRASS DISK

LEGEND

- O SET 5/8" X 30" REBAR WITH PLASTIC CAP
- YPC YELLOW PLASTIC CAP MARKED "BENTON COUNTY SURVEYOR"
- RPC RED PLASTIC CAP MARKED "BENTON COUNTY SURVEYOR"
- (C) MEASUREMENT TO CENTER
- ⊙ GOVERNMENT MONUMENT SET AS SHOWN
- V.S. VISIBLE SCRIBING
- C.S. COUNTY SURVEY
- C.S.B.T. COUNTY SURVEYOR'S BEARING TREE
- ☐ BEARING TREE STUMP AS NOTED
- ☁ BEARING TREE AS NOTED

NEW ACCESSORIES:

1. SET REBAR (SEE LEGEND) N32°24'57"W, 20.03 FEET AND 6 INCHES BELOW GROUND LEVEL.
2. SET REBAR (SEE LEGEND) S62°09'55"W, 14.60 FEET AND 6 INCHES BELOW GROUND LEVEL.

NOTES:

COMPASS DECLINATION IS 16' EAST. ALL MEASURED DISTANCES AND BEARINGS ARE TO THE CENTER OF THE OBJECT, UNLESS OTHERWISE NOTED. ALL BEARING TREES ARE PAINTED AND HAVE A B.T. TAG ATTACHED, FACING THE CORNER UNLESS OTHERWISE NOTED. ALL NEW BEARING TREES HAVE A PLASTIC WASHER (STAMPED "SURVEY MARKER DO NOT REMOVE") ATTACHED BY AN ALUMINUM NAIL TO THE SIDE CENTER OF THE TREE FOR DISTANCE MEASUREMENT, UNLESS OTHERWISE NOTED.

THIS RESTORATION WAS PERFORMED AT THE DIRECTION AND APPROVAL OF THE BENTON COUNTY SURVEYOR *ger*

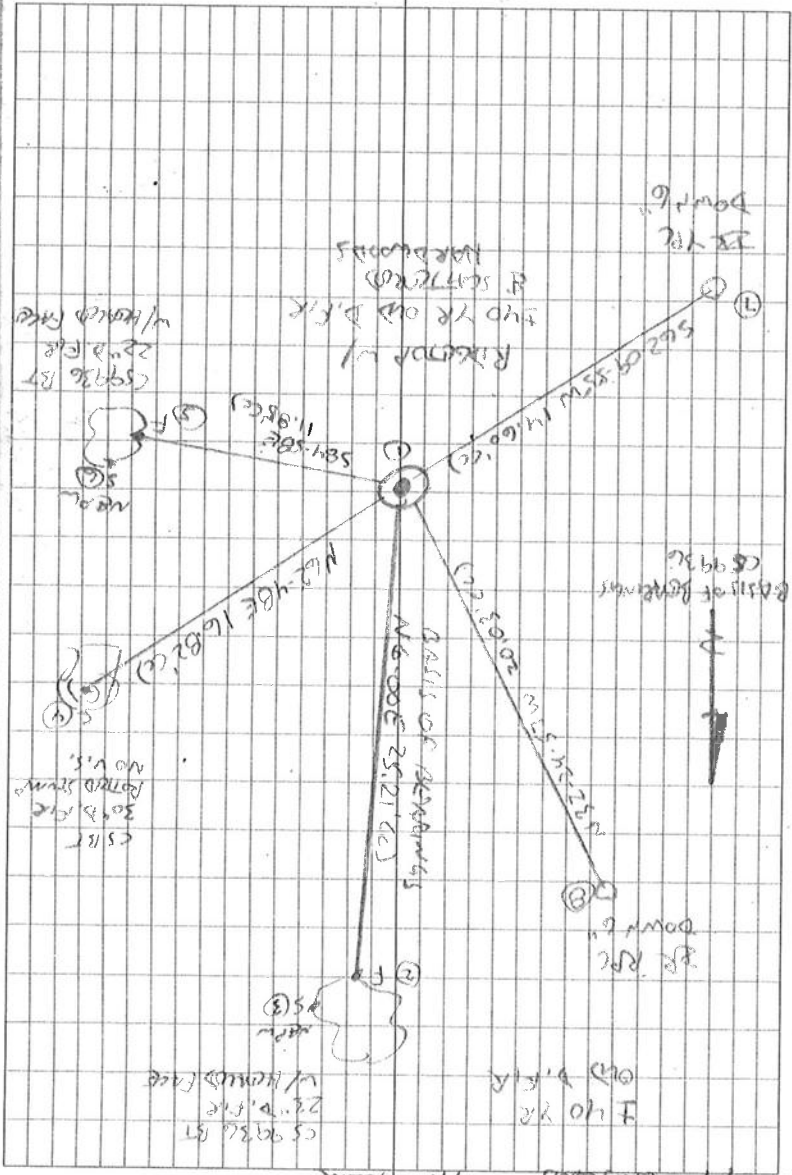
REGISTERED PROFESSIONAL LAND SURVEYOR

David L. Malone
3/29/17

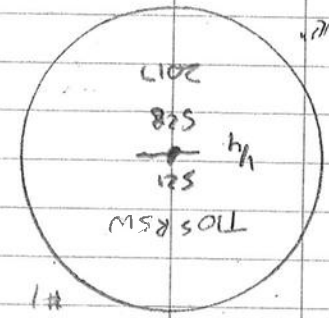
OREGON
JANUARY 12, 1999
DAVID L. MALONE
51523

FIRM/AGENCY: BENTON COUNTY SURVEYOR'S OFFICE
 ADDRESS: 360 S.W. AVERY AVE., CORVALLIS, OR 97333; PH. 541-766-6821
 PRESENT: DAVID L. MALONE, P.L.S. AND BERNARD ALTENBACH, SURVEY TECH.
 EQUIPMENT: NIKON NIV03.C WITH SURVEY PRO ONBOARD.

RENEWAL DATE: 12/31/18



11/30/2017
 D. MARONE
 B. ADAMS
 A. MARONE
 Survey PROPOSED



REMONUMENT T105 R5W 1/4 28
 105340300

FD AXLE, 3" LOW, 3-1/2" GEAR FAMILY SET,
 UP 3" ABOVE GROUND SURFACE, FOR THE CORNER.
 FD NE CSBT. FD ROTTEN REMAINS OF TWO
 CS BTs AT PERIOD BETWEEN AND DISTANCE
 PER CS 1291. FD TWO BTs PER CS 9936.
 HOLD NE 1ST FOR BASIS OF REMAINS PER
 CS 9936. REMOVED AXLE FROM AREA AND
 IN SAME HORIZONTAL POSITION SET 2" x 3-1/2"
 G.I.P. W/ 3-1/4" BRASS DISK (EMBEDDED IN THE
 TOP 5" ABOVE GROUND SURFACE, SURROUNDING
 BY STONES. SET 2 NEW 180° ROD ACCESSORIES.
 SET TO ORANGE CAPSULE "SUDNEY MARKER" POST 1 WEST
 OF CROSS DISK. SET FD WHITE EISENGLASS POST
 1' NORTH OF BRASS DISK. OLD DIRT SKID ROAD
 SOUTH 22'.

DR = 9/8" x 30" BEAM ROD
 YR OR RTR = YELLOW OR RED
 RASTICAP MARKED "REMONE"
 COUNTY SURVEYOR
 NETM = NAIL & PLASTIC W/STAMP
 MARKED "SUDNEY MARKER DO NOT REMOVE"

105340300
 REMONUMENT T105 R5W 1/4 28

CORNER RESTORATION BOOK NO. 1

C C.S. 337

by W.C. Galloway
R.J. Stewart

4 sec. cor. Between secs. 21 & 28 10-5 Sept. 1930

Set 9 Ford Axle for corner from which

A Fir 10" in dia. bears North - 080' 5th

" " 8" " " 5.72° E. 100' " dead

Mark " 20" " " " 165° 40' E. 263'

C

E1 C.S. 337

A Burt Wilkes

C Adrian Seits

June 29, 1941

4 sec. cor. Between secs. 16 & 21 10-5

Set Yew Post 4" x 4" x 42" in edge of stump hole.

Fir 48" in dia. bears S. 88 1/2° E. 13.86'

North tree down Bearing & dist agree

Mark a Fir 11" in dia. bears N. 33° W. 146'

" " Yew 4" " " 5.73° W 38.0'

R

C.S. No. 158

Burt Wilkes

C Ray McBride

Mar. 31
~~Sept. 7, 1941~~

4 sec. cor. Between secs. 6 & 7 T. 15 S. R. 6 W

Set Yew Post 4" x 4" x 56" - 24" in ground - Original stake hole

Cedar 18" in dia. bears S. 58° W. 13.4' 5th

" " " " N 65° W 25.65' "

C

Same as above

4 sec. cor. between secs. 7 & 8 15-6

Set Stone 5" x 6" x 14" + on top set in stump hole of 5' Fir which was Orig. C.S.
W.B.T. dead. E. 87.5 Stamp - Cut. Bearings & dist ok.
Some scribbles wet out by.

Mark Fir 16" in dia. bears N. 18° W. 9.83' to spike

" Fir 24" " " " 3.26° W 9.30' to spike

R

Same as above

4 sec. cor. between secs. 7 & 18 - 15-6

Set stone 6" x 10" x 16" o hole in top C.S. set orig 5th hole

Both Cedar RTs. have been cut find scribe marks in stumps No trees available for marking. Logged off

Mar. 28, 1941

C.S. # 158

Burt Wilkes

C Adrian Seits

Cor to Sections 7, 8, 17 & 18 T. 15 S. R. 6 W. July 28, 1941

Set 1/2" x 54" Galk Pipe for corner - Original stake hole

Cedar 12" in dia. bears S. 70° 30' W. 35.54' standing All other Orig. trees gone.

Mark Fir 15" " " N. 14° W. 31.68'

" " 14" " " S. 19 1/2° E. 33.95'

" " 16" " " S. 7 1/2° W 41.3'

W

C.S. Road 626

1/4 Sec. between Secs. 24 and 25 T. 10 S. R. 7 W

Apr. 5, 1941.

Set a 1/2" galk pipe from a fir 36" in dia. bears N. 15° E. 32' 5th. letters on bark

Original corner

We drove a spike in s. of a 70" fir which bears N. 81° 18' W. 54.37 feet

" " " " SW of a 27" " " East 44.62 "

" " " 1/2" pipe West 38.00 "

" " spike in S.E. of a 24" " " S. 44° 32' W. 45.3 "

Center of a fir 24" in dia. bears S. 46° 20' W. 45.3 "

Station 247273.69 N. 53° 56' E. 25.65 "

Tangent of road is N. 24° 32' E.

B

R

R

1-Section corner between sections 21 and 28, Twp. 10-5

222

Reestablishment by W. C. Galloway

September 1936

Set a ford axle for corner

Fir 10" in diam bears North .080 chains

Fir 8" in diam bears S 72° E

Fir 20" in diam bears N 65° 40' E

.100 chains
.263 chains

Witness R. J. Stewart