

105340565

CORNER FILE TRACKING

S:\Survey Corners\CORNERS\Templates\Filetrac2.doc

10/04/2010

CORNER NUMBER
105340565

STEP	HISTORY	RESTORATION
Form Prepared, DB	10/14/14	12/02/14
Field Inspection, DB	11/25/14	11/25/14
Finish index (count unit)	10/14/14	11/25/14
Counter Index	11/25/14	11/25/14
GIS Index Form	12/02/14	12/02/14
Checked, DB	12/04/14	12/04/14
Form Edited, DB	12/04/14	12/04/14
Form Signed, DB	12/04/14	12/04/14
Authorize Payment, DB	—	—
Archive Digital Files	12/04/14	12/04/14
Collect Documents	12/02/14	12/02/14
PDF File	12/08/14	12/08/14
Copy For Filming	12/08/14	12/08/14
Scanned (pdf to laserfiche)	12/08/14	12/08/14
Filmed (Archived), DB		
Filed, DB		

(DB) = Entry needed in database (Access).

COMMENTS:

DATE 10/14/2014TOWNSHIP 10 SOUTH, RANGE 5 WEST, WILLAMETTE MERIDIAN; SECTION 9 CORNER COUNTY LINE
DONATION LAND CLAIM N/A CORNER N/ACOMMON CORNER(S):

NONE

RECORDS (INFORMATION IN **BOLD ITALICS** IS COUNTY STAFFS' INTERPRETATION OF THE RECORD)

BASED ON EXTENSIVE RESEARCH AND RECOVERY OF EVIDENCE, THIS OFFICE HAS DETERMINED THAT MOST GENERAL LAND OFFICE SURVEYORS IN BENTON COUNTY MEASURED TO THE FACE OF BEARING TREES.

[01] BENTON COUNTY SURVEY 10157 (OLD NO. 134) FIELD NOTES (FIELD BOOK 50, PAGE 14) BY W. C. GALLOWAY, C.S., DATED OCTOBER 27, 1930. SET ***3/4" PIPE. FIR 20" DIA BEARS N45°E, 0.067 CHAINS (4.42 FEET); OAK 8" DIA BEARS S30°E, 0.024 CHAINS (1.58 FEET).***

[02] BENTON COUNTY SURVEY 10157 (OLD NO. 134) BY W. C. GALLOWAY, C.S., DATED OCTOBER 27, 1930. ALSO RECORDED AS POLK COUNTY SURVEY NO. 15402. ***3/4" PIPE. FIR 20" DIA (CSBT) BEARS N45°E, 0.067 CHAINS (4.42 FEET); OAK 8" DIA (CSBT) BEARS S30°E, 0.024 CHAINS (1.58 FEET).***

FIRM/AGENCY: BENTON COUNTY SURVEYOR'S OFFICE
ADDRESS: 360 S.W. AVERY AVE., CORVALLIS, OR 97333; PH. 541-766-6821
RESEARCH BY: DAVID L. MALONE, P.L.S.
DATA ENTRY BY: SAME

BENTON COUNTY CORNER RESTORATION FORM, PAGE 1 OF 2, 105340565R1

SEE CORNER HISTORY FORM FOR RECORDS ETC.

CORNER RESTORATION FIELD BOOK NUMBER 30 PAGE(S) 18 DATE 11/25/2014
TOWNSHIP 10 SOUTH, RANGE 5 WEST, WILLAMETTE MERIDIAN; SECTION 9 CORNER COUNTY LINE _____
DONATION LAND CLAIM N/A CORNER N/A
CONDITION REPORT _____; REFERENCED OUT _____; RENEWED X; SURVEYED IN _____

LOCATION AND COMMENTS:

CORNER IS LOCATED IN A STAND OF ±25 YEAR OLD D. FIR ON FAIRLY FLAT GROUND. TO REACH CORNER FROM THE POLK/BENTON COUNTY LINE ON TAMPICO ROAD, GO SOUTH ABOUT 140 FEET TO THE OREGON STATE UNIVERSITY 000 GATE. FOLLOW THE 000 ROAD WEST-NORTHWEST ABOUT 1,370 FEET AND PARK. CORNER IS ON THE NORTH SIDE OF THE ROAD. CORNER IS BAD FOR PREMARKING AND GPS CONTROL.

MONUMENTS AND ACCESSORIES FOUND (CONDITION AND SOURCE):

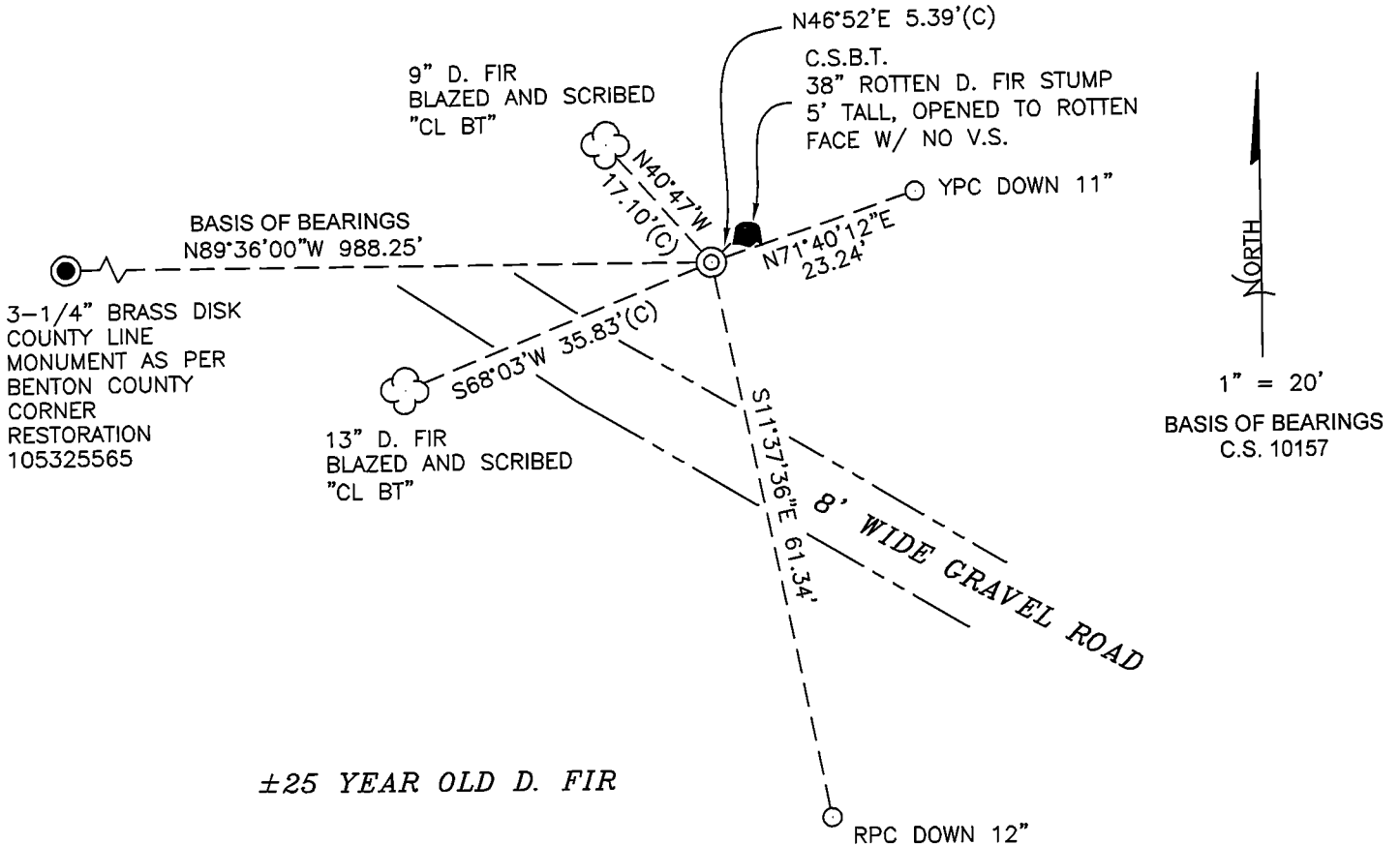
1. FOUND 3/4" IRON PIPE, FIRMLY SET, UNDISTURBED AND DOWN 8" BELOW GROUND SURFACE FOR THE CORNER.
(SET 3/4" PIPE AS PER RECORD [01]).
(3/4" PIPE AS PER RECORD [02]).
2. FOUND 5 FOOT TALL ROTTEN D. FIR STUMP 38" DIA BEARS N46°52'E, 5.39 FEET TO CENTER. OPENED TO ROTTEN FACE WITH NO VISIBLE SCRIBING.
(FIR 20" DIA BEARS N45°E, 0.067 CHAINS [4.42 FEET] AS PER RECORDS [01] AND [02]).
3. FOUND 3-1/4" BRASS DISK BEARS N89°36'00"W, 988.25 FEET, AS PER BENTON COUNTY CORNER RESTORATION 105325565.
BASIS OF BEARINGS FOR THIS RESTORATION.
(3/4" ROD BEARS N89°36'W, 14.975 CHAINS [988.35 FEET] AS PER RECORD [02]).

MONUMENT SET (PROCEDURES AND DESCRIPTION):

FOUND 3/4" IRON PIPE, FIRMLY SET, UNDISTURBED AND DOWN 8" BELOW GROUND SURFACE FOR THE CORNER. W. C. GALLOWAY, C.S., SET THE 3/4" IRON PIPE TO MARK THE COUNTY LINE IN 1930. I FOUND THE NORTHEAST COUNTY SURVEYOR'S BEARING TREE, A STUMP WHICH I OPENED TO A ROTTEN FACE. I HELD THE 3/4" IRON PIPE AS FOUND TO MARK THE COUNTY LINE PER W. C. GALLOWAY'S COUNTY LINE SURVEY, C.S. 10157.

OVER THE 3/4" IRON PIPE IN THE SAME HORIZONTAL POSITION I SET A 2" X 31-1/2" GALVANIZED IRON PIPE WITH A 3-1/4" BRASS DISK CEMENTED IN THE TOP, DOWN 6" BELOW GROUND SURFACE AND MARKED AS SHOWN ON PAGE 2 OF 2. SET TWO NEW IRON ROD ACCESSORIES AND BLAZED AND SCRIBED TWO NEW BEARING TREES AS SHOWN ON PAGE 2 OF 2. SET A 6 FOOT ORANGE CARSONITE "SURVEY MARKER" POST 1 FOOT SOUTH OF NEW MONUMENT.

±25 YEAR OLD D. FIR



MONUMENT DETAIL



3-1/4" BRASS DISK

LEGEND

- SET 5/8" X 30" REBAR WITH PLASTIC CAP
- YPC YELLOW PLASTIC CAP MARKED "BENTON COUNTY SURVEYOR"
- RPC RED PLASTIC CAP MARKED "BENTON COUNTY SURVEYOR'S OFFICE"
- (C) MEASUREMENT TO CENTER
- ⊙ GOVERNMENT MONUMENT SET AS SHOWN
- GOVERNMENT MONUMENT FOUND AS SHOWN
- V.S. VISIBLE SCRIBING
- C.S. COUNTY SURVEY
- C.S.B.T. COUNTY SURVEYOR'S BEARING TREE
- BEARING TREE STUMP AS NOTED
- ☁ BEARING TREE AS NOTED

NEW ACCESSORIES:

1. SET REBAR (SEE LEGEND) N71°40'12"E, 23.24 FEET AND 11 INCHES BELOW GROUND LEVEL.
2. SET REBAR (SEE LEGEND) S11°37'36"E, 61.34 FEET AND 12 INCHES BELOW GROUND LEVEL.
3. D. FIR 13" DIA BEARS S68°03'W, 35.83 FEET TO CENTER, FACE SCRIBED "CL BT". SET ALUMINUM NAIL AND PLASTIC WASHER IN NORTHWESTERLY BASE FOR DISTANCE MEASUREMENT.
4. D. FIR 9" DIA BEARS N40°47'W, 17.10 FEET TO CENTER, FACE SCRIBED "CL BT". SET ALUMINUM NAIL AND PLASTIC WASHER IN NORTHEASTERLY BASE FOR DISTANCE MEASUREMENT.

NOTES:

COMPASS DECLINATION IS 16° EAST. ALL MEASURED DISTANCES AND BEARINGS ARE TO THE CENTER OF THE OBJECT, UNLESS OTHERWISE NOTED. ALL BEARING TREES ARE PAINTED AND HAVE A B.T. TAG ATTACHED, FACING THE CORNER UNLESS OTHERWISE NOTED. ALL NEW BEARING TREES HAVE A PLASTIC WASHER (STAMPED "SURVEY MARKER DO NOT REMOVE") ATTACHED BY AN ALUMINUM NAIL TO THE SIDE CENTER OF THE TREE FOR DISTANCE MEASUREMENT, UNLESS OTHERWISE NOTED.

THIS RESTORATION WAS PERFORMED AT THE DIRECTION AND APPROVAL OF THE BENTON COUNTY SURVEYOR *Jean*

REGISTERED
PROFESSIONAL
LAND SURVEYOR

FIRM/AGENCY: BENTON COUNTY SURVEYOR'S OFFICE
 ADDRESS: 360 S.W. AVERY AVE., CORVALLIS, OR 97333; PH. 541-766-6821
 PRESENT: DAVID L. MALONE, P.L.S. AND BERNARD ALTENBACH, SURVEY TECH.
 EQUIPMENT: NIKON NIV03.C WITH SURVEY PRO ONBOARD.

12/01/14 *David L. Malone*

OREGON
 JANUARY 12, 1999
 DAVID L. MALONE
 51523

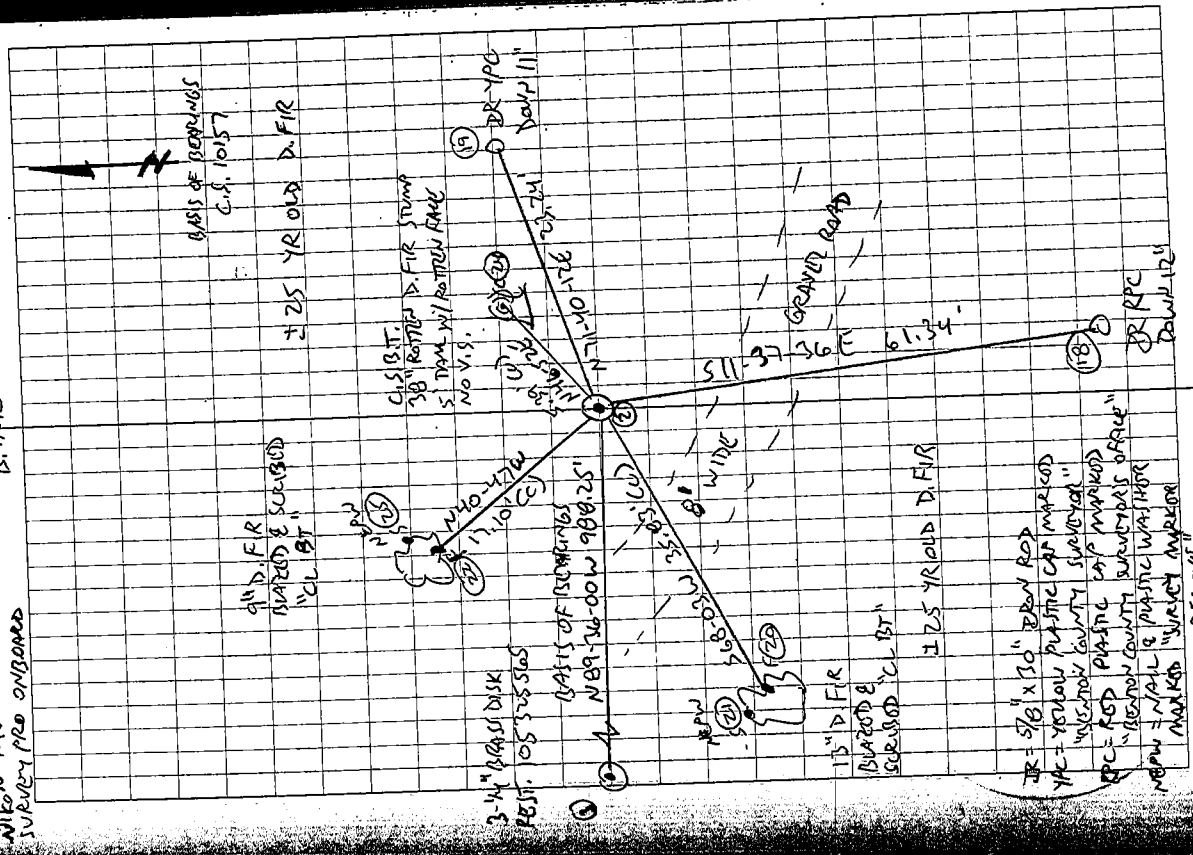
RENEWAL DATE: 12/31/14

8/10

11/28/14
D. MALONE
B. ATTEM-BACH

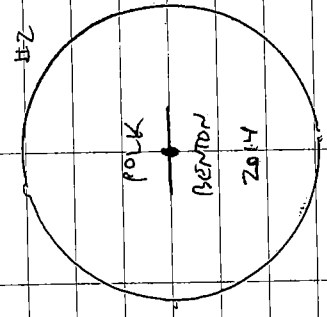
COOL, CLOUDY

WILSON MVO 316
SURVEY PRO ON BOARD



REMONUMENT T101 RSW COUNTY LINE

FD 3/4" BRON PIPE, FIRMLY SET, UNDISTURBED, DOWN
 6" BEZEL GROUND SURFACE, OVER IRON PIPE IN THE
 SAME HORIZONTAL POSITION SET A 2" x 3 1/2" G.I.P.
 W/ 3-1/4" BRASS DISK CENTERED IN THE TOP, 1" D.
 NE CORNER, A 30" D. FIR STUMP, 5' TALL, ROTTEN. OPENED
 TO A ROTTEN FACE W/ NO V.S. SET 2 NEW IRON ROD
 ACCESSORIES AND BURIED & SCREENED 2 NEW BEARING
 TREES. SET 6' ORANGE CARBONITE "SURVEY MARKER" POST
 1' SOUTH OF NEW MONUMENT.



3-1/4" BRASS DISK

BR = 5/8" x 1/2" BRON ROD
 YR = YELLOW PLASTIC CAP MARKED
 "WILSON COUNTY SURVEY"
 PC = RED PLASTIC CAP MARKED
 "WILSON COUNTY SURVEY"
 MOPW = 1/2" x 1/2" PLASTIC W/ WHITE
 MARKED "SURVEY MARKER"
 DO NOT REMOVE!