

105400565

CORNER FILE TRACKING

S:\Survey Corners\CORNERS\Templates\Filetrac2.doc
10/04/2010

CORNER NUMBER
105400565

STEP	HISTORY	RESTORATION
Form Prepared, DB	10/14/14	5/21/15
Field Inspection, DB	4/02/15	4/02/15
Finish index (count unit)	10/14/14	4/02/15
Counter Index	4/02/15	4/02/15
GIS Index Form	5/21/15	5/21/15
Checked, DB	5/21/15	5/21/15
Form Edited, DB	5/21/15	5/21/15
Form Signed, DB	5/21/15	5/21/15
Authorize Payment, DB	—	—
Archive Digital Files	5/21/15	5/21/15
Collect Documents	5/21/15	5/21/15
PDF File	5/21/15	5/21/15
Copy For Filming	5/21/15	5/21/15
Scanned (pdf to laserfiche)	5/21/15	5/21/15
Filmed (Archived), DB		
Filed, DB		

(DB) = Entry needed in database (Access).

COMMENTS:

DATE 10/14/2014

TOWNSHIP 10 SOUTH, RANGE 5 WEST, WILLAMETTE MERIDIAN; SECTION 9 CORNER EAST LINE/COUNTY LINE
DONATION LAND CLAIM N/A CORNER N/A

COMMON CORNER(S):
INTERSECTION OF WEST LINE OF SECTION 10 WITH COUNTY LINE

RECORDS (INFORMATION IN BOLD *ITALICS* IS COUNTY STAFFS' INTERPRETATION OF THE RECORD)
BASED ON EXTENSIVE RESEARCH AND RECOVERY OF EVIDENCE, THIS OFFICE HAS DETERMINED THAT MOST GENERAL LAND OFFICE SURVEYORS IN BENTON COUNTY MEASURED TO THE FACE OF BEARING TREES.

[01] BENTON COUNTY SURVEY 10157 (OLD NO. 134) FIELD NOTES (FIELD BOOK 50, PAGE 13) BY W. C. GALLOWAY, C.S., DATED OCTOBER 27, 1930. SET **1" PIPE 12" UNDER SURFACE AND 4 STONES. HIGHEST POINT OF GRANITE STONE 20" X 30" X 16" HIGH BEARS N47°44'W, 1.728 CHAINS (114.05 FEET); HIGHEST POINT OF GRANITE STONE 20" X 30" BEARS N47°51'W, 1.765 CHAINS (116.49 FEET); DOUBLE ASH 14" X 24" DIA BEARS N16°W, 1.830 CHAINS (120.78 FEET); MARKED ASH 15" DIA BEARS N89°57'E, ABOUT 6 CHAINS (396 FEET), "BENTON/POLK"**.

[02] BENTON COUNTY SURVEY 10157 (OLD NO. 134) BY W. C. GALLOWAY, C.S., DATED OCTOBER 27, 1930. ALSO RECORDED AS POLK COUNTY SURVEY NO. 15402. **1" PIPE. HIGH POINT GRANITE STONE BEARS N47°44'W, 1.728 CHAINS (114.05 FEET); HIGH POINT GRANITE STONE BEARS N47°51'W, 1.765 CHAINS (116.49 FEET); DOUBLE ASH 14" X 24" DIA (CSBT) BEARS N16°W, 1.83 CHAINS (120.78 FEET); ASH 15" DIA (CSBT) BEARS N89°57'E, 6.00± CHAINS (396.00± FEET).**

[03] BENTON COUNTY MAP NO. 10-5-00004 BY UNKNOWN DRAFTSMAN, NO DATE GIVEN. **1" PIPE 12" UNDER SURFACE.**

FIRM/AGENCY: BENTON COUNTY SURVEYOR'S OFFICE
ADDRESS: 360 S.W. AVERY AVE., CORVALLIS, OR 97333, PH. 541-766-6821
RESEARCH BY: DAVID L. MALONE, P.L.S.
DATA ENTRY BY: SAME

**BENTON COUNTY CORNER RESTORATION FORM, PAGE 1 OF 2, 105400565R1
SEE CORNER HISTORY FORM FOR RECORDS ETC.**

CORNER RESTORATION FIELD BOOK NUMBER 30 PAGE(S) 39

DATE 04/02/2015

TOWNSHIP 10 SOUTH, RANGE 5 WEST, WILLAMETTE MERIDIAN; SECTION 9 CORNER EAST LINE/COUNTY LINE
DONATION LAND CLAIM N/A CORNER N/A

CONDITION REPORT ____; REFERENCED OUT ____; RENEWED X; SURVEYED IN ____

LOCATION AND COMMENTS:

CORNER IS LOCATED IN A GRASS FARM FIELD ON FLAT GROUND JUST SOUTH OF A BRUSH AND TREE LINE. TO REACH CORNER FROM THE DRIVEWAY AT 27251 TAMPICO ROAD, WALK N48°E, ABOUT 1440 FEET. CORNER IS GOOD FOR PREMARKING AND GPS CONTROL.

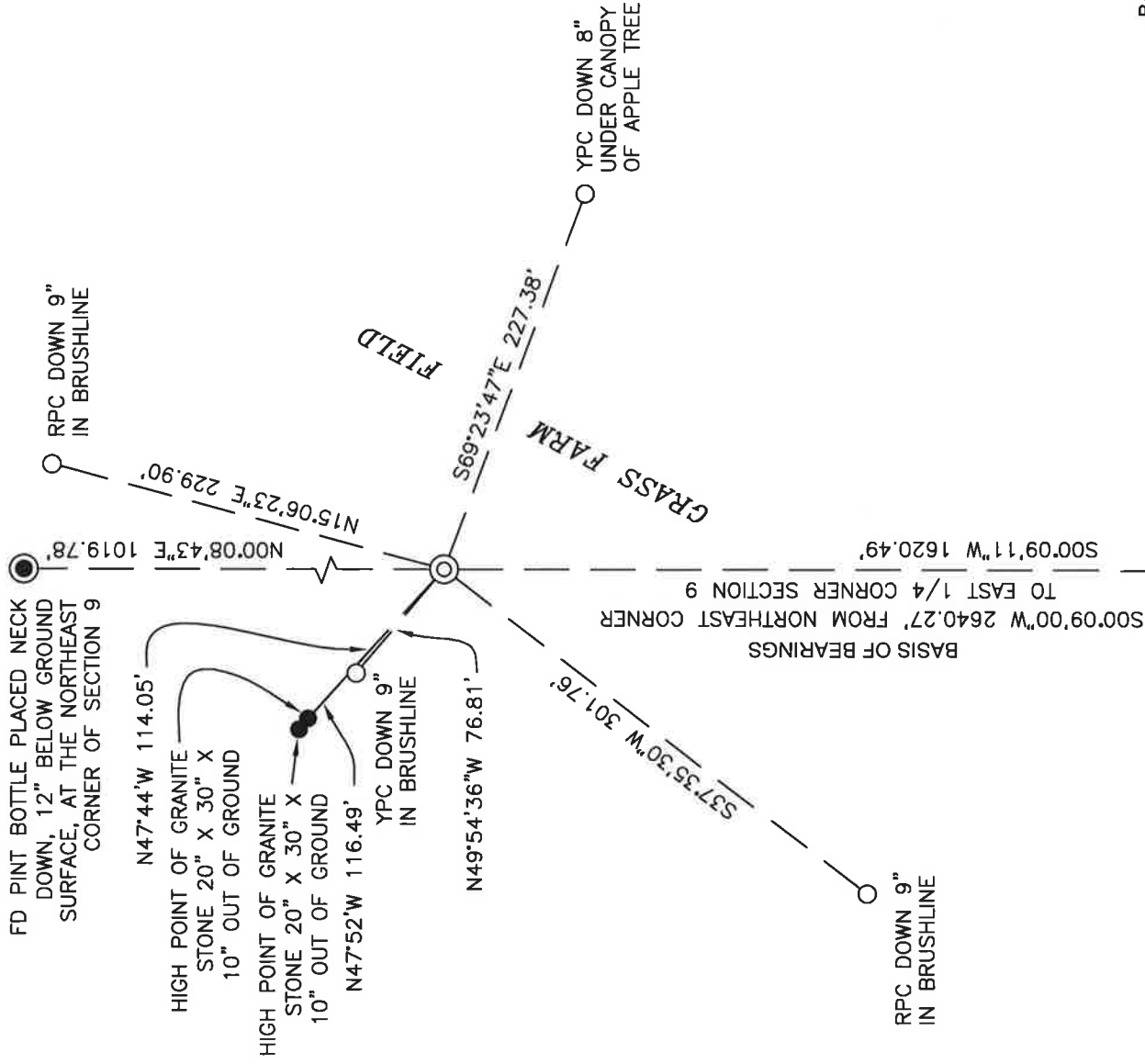
MONUMENTS AND ACCESSORIES FOUND (CONDITION AND SOURCE):

1. FOUND 1" X 18" IRON PIPE LEANING OVER AT ABOUT A 45° ANGLE, DISTURBED AND ABOUT 4" BELOW GROUND SURFACE AT APPROXIMATE CORNER POSITION.
(SET 1" PIPE 12" UNDER SURFACE AND 4 STONES PER RECORD [01]).
(1" PIPE PER RECORD [02]).
(1" PIPE 12" UNDER SURFACE PER RECORD [03]).
2. FOUND HIGH POINT OF GRANITE STONE 20" X 30" X 10" OUT OF GROUND BEARS N47°44'W, 114.05 FEET.
(HIGHEST POINT OF GRANITE STONE 20" X 30" X 16" HIGH BEARS N47°44'W, 1.728 CHAINS [114.05 FEET] PER RECORD [01]).
(HIGH POINT GRANITE STONE BEARS N47°44'W, 1.728 CHAINS [114.05 FEET] PER RECORD [02]).
3. FOUND HIGH POINT OF GRANITE STONE 20" X 30" X 10" OUT OF GROUND BEARS N47°52'W, 116.49 FEET.
(HIGHEST POINT OF GRANITE STONE 20" X 30" BEARS N47°51'W, 1.765 CHAINS [116.49 FEET] PER RECORD [01]).
(HIGH POINT GRANITE STONE BEARS N47°51'W, 1.765 CHAINS [116.49 FEET] PER RECORD [02]).
4. FOUND PINT BOTTLE PLACED NECK DOWN, 12" BELOW GROUND SURFACE, AT THE NORTHEAST CORNER OF SECTION 9 BEARS N0°08'43"E, 1019.78 FEET.
(PINT BOTTLE BEARS N0°09'E, 15.450 CHAINS [1019.70 FEET] PER RECORD [01]).
(PINT BOTTLE BEARS N0°09'E, 15.45 CHAINS [1019.70 FEET] PER RECORD [02]).
5. FOUND 3-1/4" BRASS DISK AT THE EAST QUARTER CORNER OF SECTION 9 AS PER CORNER RESTORATION 105400540R2 BEARS S0°09'11"W, 1620.49 FEET. THIS BRASS DISK BEARS S0°09'00"W, 2640.27 FEET FROM THE NORTHEAST CORNER OF SECTION 9 LISTED ABOVE. **BASIS OF BEARINGS FOR THIS RESTORATION.**
(QUART BOTTLE IN PLACE BEARS S0°09'W, 40.006 CHAINS [2640.40 FEET] FROM PINT BOTTLE AT THE NORTHEAST CORNER OF SECTION 9 AS PER RECORD [01]).
(QUART BOTTLE 14" UNDER SURFACE BEARS S0°09'W, 40.006 CHAINS [2640.40 FEET] FROM PINT BOTTLE AT THE NORTHEAST CORNER OF SECTION 9 AS PER RECORD [02]).
(QUART BOTTLE 14" UNDER SURFACE BEARS S0°09'E, 40.006 CHAINS [2640.40 FEET] FROM PINT BOTTLE 12" UNDER SURFACE AS PER RECORD [03]).

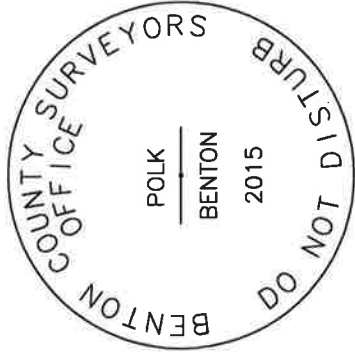
MONUMENT SET (PROCEDURES AND DESCRIPTION):

FOUND 1" X 18" IRON PIPE SET TO MARK THE COUNTY LINE BY W. C. GALLOWAY, C.S., IN 1930, PER C.S. 10157, DISTURBED AND LEANING OVER AT A 45° ANGLE IN THE APPROXIMATE CORNER POSITION. HELD THE NORTHEAST AND EAST QUARTER CORNERS OF SECTION 9 FOR THE BASIS OF BEARINGS PER C.S. 10157. THEN HELD RECORD BEARING AND DISTANCE FROM THE HIGHEST POINT OF THE CLOSEST GRANITE STONE THAT WAS USED AS A REFERENCE OBJECT IN C.S. 10157. THIS POSITION FIT VERY NICELY WITH THE REMAINING GRANITE STONE AS WELL AS THE NORTHEAST AND EAST QUARTER CORNERS OF SECTION 9, AND THUS WAS HELD AS A PERPETUATION OF THE CORNER.

AT THE CALCULATED POSITION I SET A 2" X 30" GALVANIZED IRON PIPE WITH A 3-1/4" BRASS DISK CEMENTED IN THE TOP 17" BELOW GROUND SURFACE AND MARKED AS SHOWN ON PAGE 2 OF 2. PLACED SEVERAL SMALL STONES ON THE NORTH SIDE OF THE MONUMENT. BURIED THE 1" IRON PIPE HORIZONTALLY ON THE WEST SIDE OF THE MONUMENT. SET FOUR NEW IRON ROD ACCESSORIES AS SHOWN ON PAGE 2 OF 2. SET A 6 FOOT ORANGE CARSONITE "SURVEY MARKER" POST 1 FOOT S50°E OF NEW NORTHWEST IRON ROD ACCESSORY, APPROXIMATELY N50°W, 75.8 FEET OF NEW MONUMENT.



MONUMENT DETAIL



3-1/4" BRASS DISK

NEW ACCESSORIES:

1. SET REBAR (SEE LEGEND) N15°06'23"E, 229.90 FEET AND 9 INCHES BELOW GROUND LEVEL.
2. SET REBAR (SEE LEGEND) S69°23'47"E, 227.38 FEET AND 8 INCHES BELOW GROUND LEVEL.
3. SET REBAR (SEE LEGEND) S37°35'30"W, 301.76 FEET AND 9 INCHES BELOW GROUND LEVEL.
4. SET REBAR (SEE LEGEND) N49°54'36"W, 76.81 FEET AND 9 INCHES BELOW GROUND LEVEL.

NOTES:

COMPASS DECLINATION IS 16' EAST. ALL MEASURED DISTANCES AND BEARINGS ARE TO THE CENTER OF THE OBJECT, UNLESS OTHERWISE NOTED.

THIS RESTORATION WAS PERFORMED AT THE DIRECTION AND APPROVAL OF
THE BENTON COUNTY SURVEYOR *Jan*

FIRM/AGENCY: BENTON COUNTY SURVEYOR'S OFFICE
ADDRESS: 360 S.W. AVERY AVE., CORVALLIS, OR 97333; PH. 541-766-6821
PRESENT: DAVID L. MALONE, P.L.S. AND BERNARD ALTENBACH, SURVEY TECH.
EQUIPMENT: NIKON NIV03.C WITH SURVEY PRO ONBOARD.

REGISTERED
PROFESSIONAL
LAND SURVEYOR

David L. Malone
5/21/15

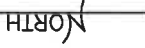
OREGON
JANUARY 12, 1999
DAVID L. MALONE
51523

RENEWAL DATE: 12/31/16

FD 3-1/4" BRASS DISK AT THE EAST QUARTER CORNER OF SECTION 9 AS PER CORNER RESTORATION 105400540R2

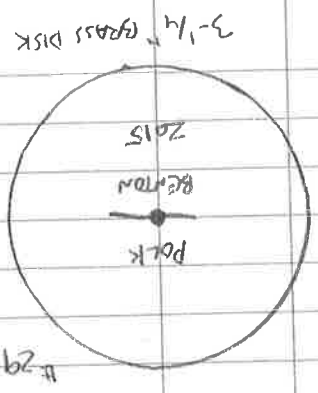
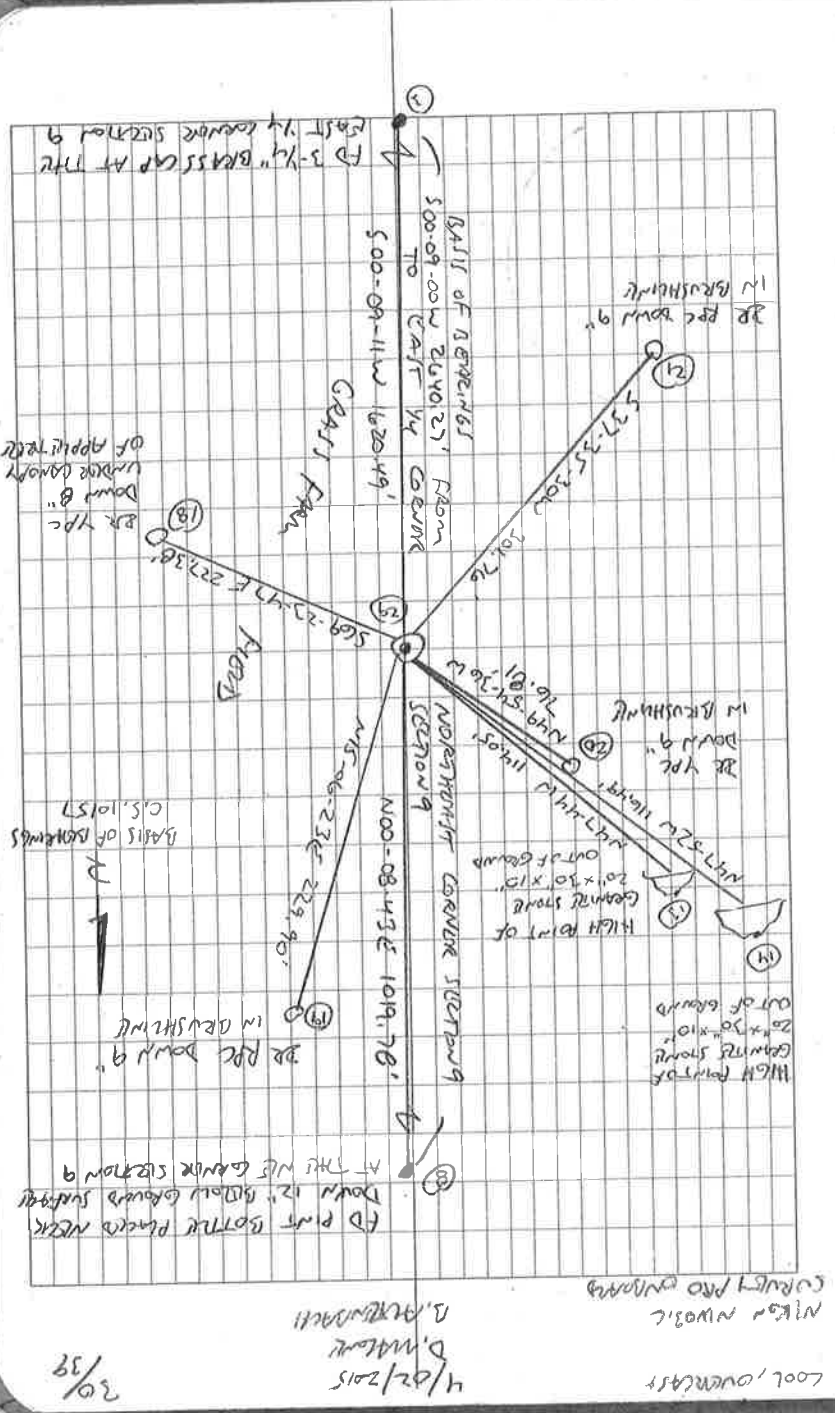
LEGEND

- SET 5/8" X 30" REBAR WITH PLASTIC CAP YELLOW PLASTIC CAP MARKED "BENTON COUNTY SURVEYOR"
- RED PLASTIC CAP MARKED "BENTON COUNTY SURVEYOR'S OFFICE"
- FOUND MONUMENT AS NOTED.
- ◎ GOVERNMENT MONUMENT SET AS SHOWN
- ◎ GOVERNMENT MONUMENT FOUND AS SHOWN
- C.S. COUNTY SURVEY



1" = 100'

BASIS OF BEARINGS
C.S. 10157



REMONUMENT
TOS RSW COUNTY LINE

FD # 1" x 16" BRON PIPE, LEANING OVER ABOUT 45° DISTANCED
ABOUT 4" ABOVE GROUND SURFACE. FD TWO LABELS GEARTE
STALE REFERENCED OBJECTS PER C.S. 10157, USING BASIS
OF BEARINGS PER C.S. 10157, HAD RECORD BEARING AND
DISTANCE FROM CLOSEST STAKE TO RE-ESTABLISH COUNTY LINE
MONUMENT. SET 2" x 30" GALVANIZED IRON PIPE W/
3-1/4" BRASS DISK (EMBED IN THE TOP 1" BELOW GROUND
SURFACE. BURIED 1" IRON PIPE HORIZONTAL ON LEVEL
SIDE OF MONUMENT. PLACED SEVERAL SMALL STAKES, THAT
HAD BEEN FOUND WHILE DIGGING HOLE, ON NORTH SIDE
OF MONUMENT. SET A NEW IRON ROD ACCESSORIES,
SET TO GRANITE CORNERITE "SWEET MARKER" POST 1'
5.50' OF NEW NW CORNER ACCESSORY, N 50° W
76.8' OF NEW MONUMENT.

105400565